

Ocean Wind Offshore Wind Farm

National Historic Preservation Act

What is Section 106 of the National Historic Preservation Act?

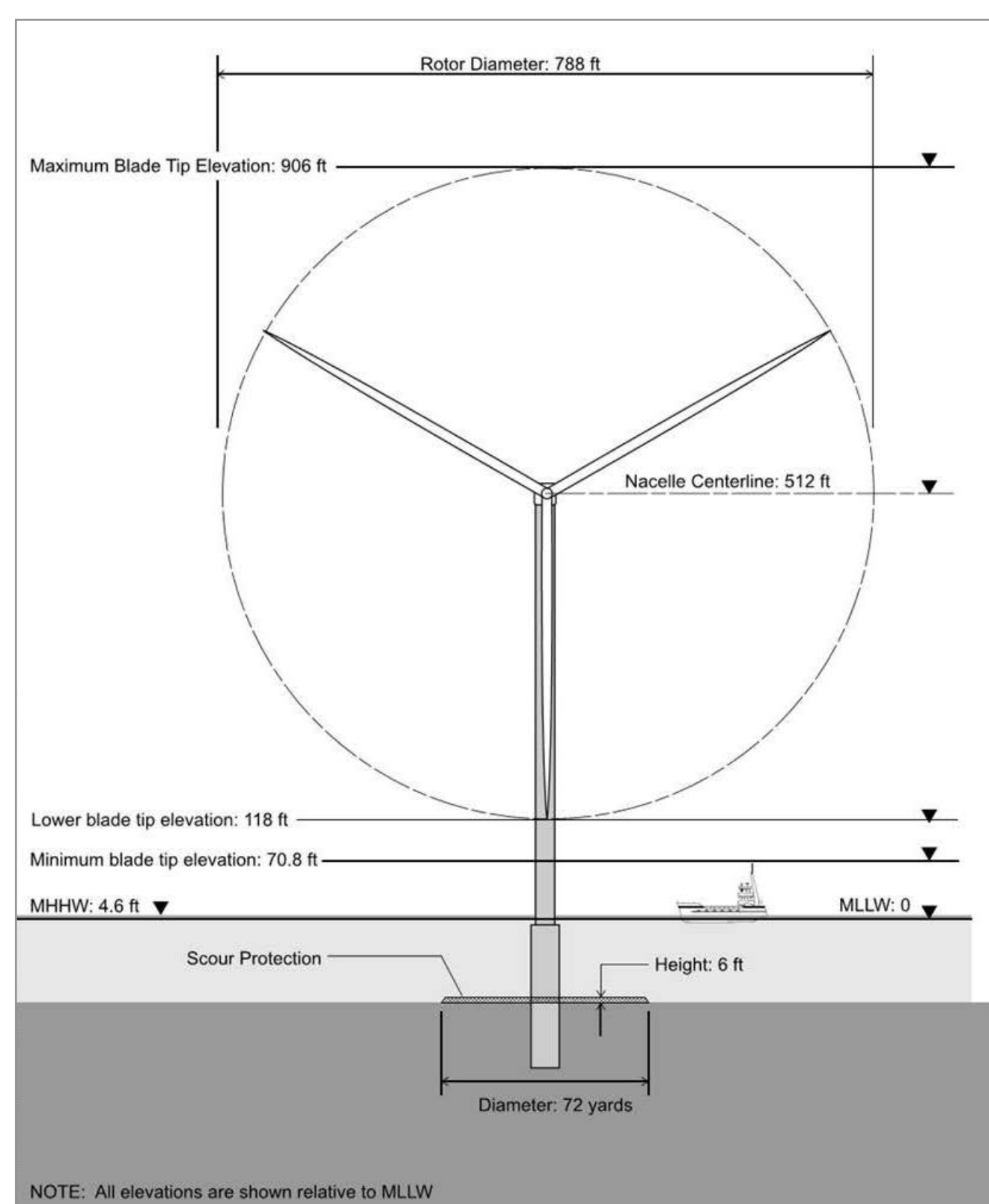
It is a regulation that requires Federal agencies to consider effects of undertakings on historic properties.

What will it do?

- Establish Area of Potential Effect (APE).
- Identify Historic Properties.
- Assess project effects on historic properties.
- Resolve adverse effects (avoid, minimize, or mitigate).

What are the National Register Criteria?

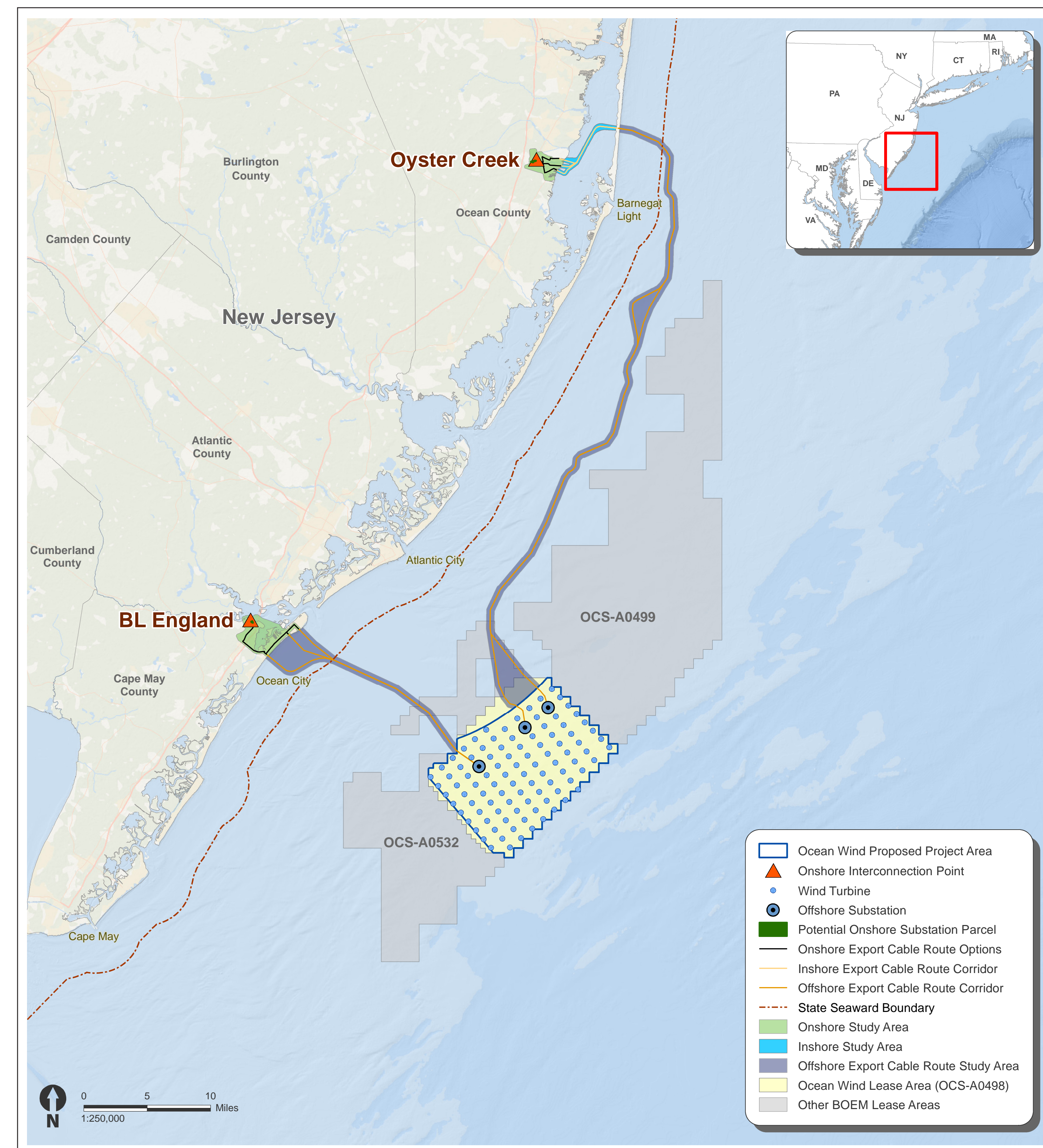
- Associated with significant historical events.
- Associated with the lives of persons significant in our past.
- Embody distinctive style, period, method of construction, or represent work of a master or possess high artistic values, or represent a district with components that may lack individual distinction.
- Properties that have yielded or may be likely to yield, information important in history or prehistory.



Maximum Design Wind Turbine



Indicative Image of an Offshore Substation



Project Location Map

What is the Area of Potential Affect (APE) for the Ocean Wind Project?

BOEM needs your input: do you know of historic properties (Buildings, Structures, Objects, Archaeological Sites, Districts, Landscapes, Traditional Cultural Properties) that may be affected by this project?

This project has three categories of APE:

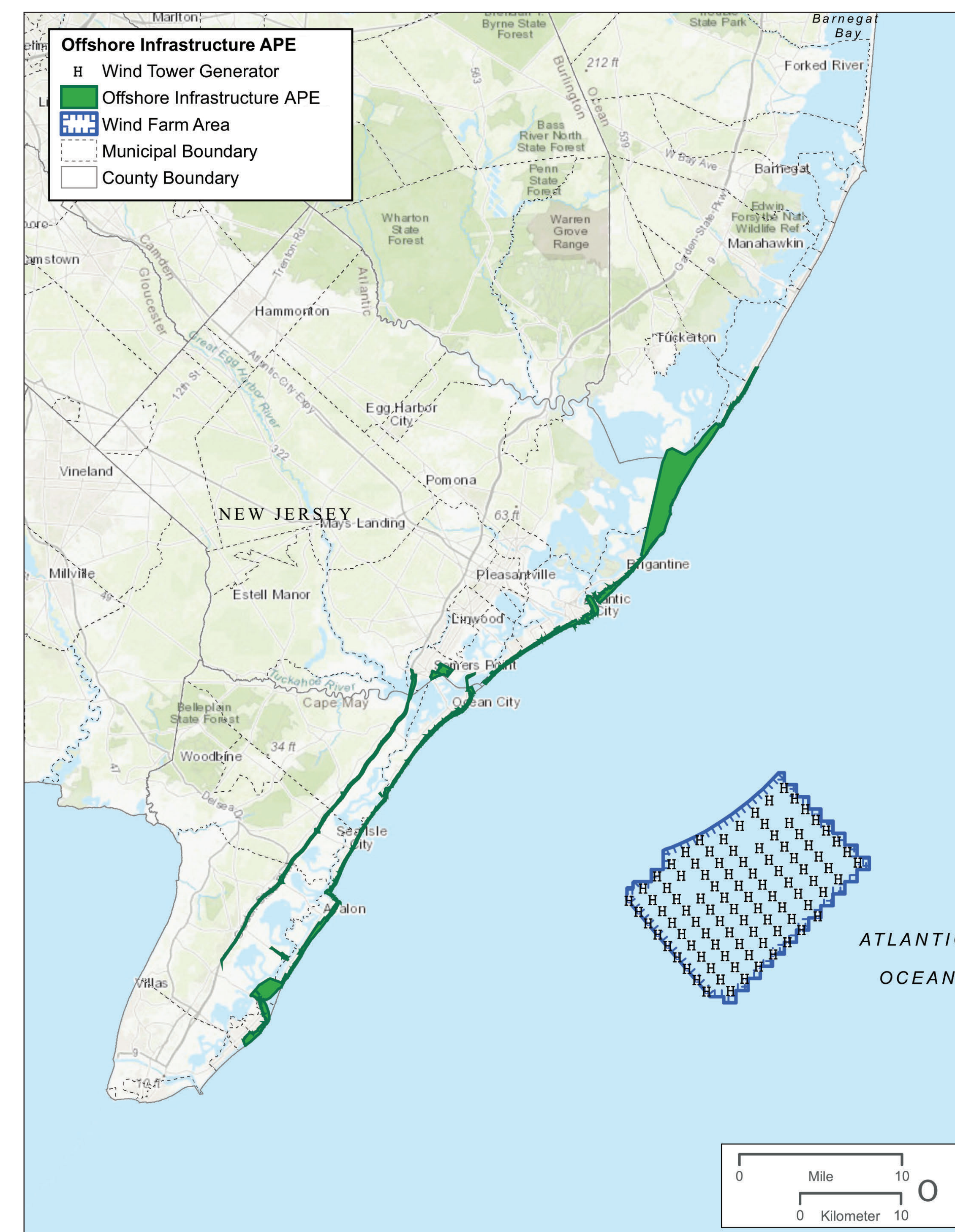
- 1. Terrestrial:** Underground cable routes onshore and substation locations
- 2. Marine:** Seafloor wind turbine locations and cable routes to shore
- 3. Visual for Historic Resources:** Views of the project from historic resources



Lucy the Margate Elephant National Historic Landmark.



Simulation of how the proposed wind development would appear from the top of Lucy the Margate Elephant National Historic Landmark.



Offshore Infrastructure Preliminary APE

Ocean Wind Offshore Wind Farm

What is the Area of Potential Effect (APE) for the Ocean Wind Project?



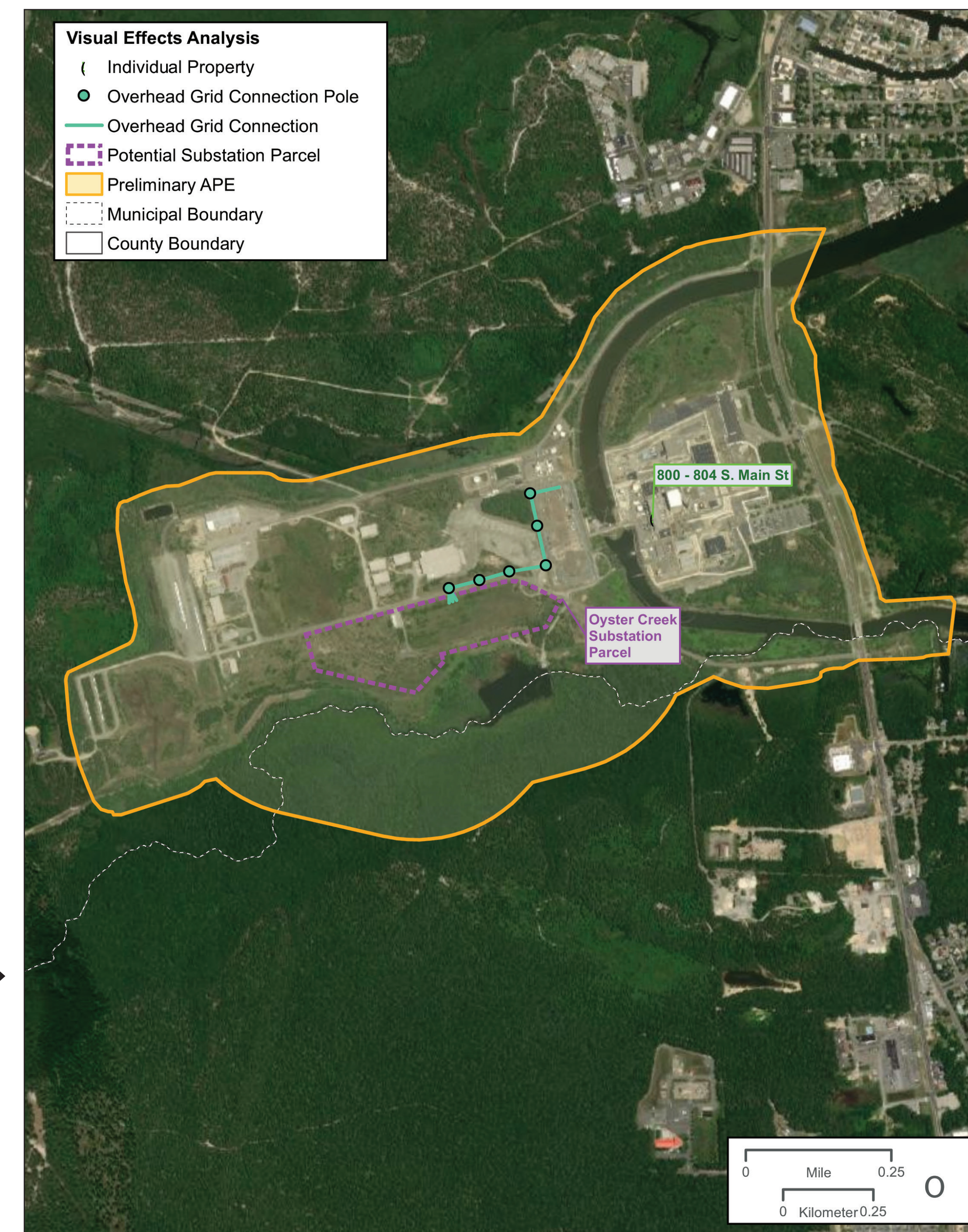
BL England Substation Preliminary APE



817 North Shore Road, 0.13 mi southeast of the proposed BL England Substation location



Oyster Creek Generating Station, adjacent to the proposed Oyster Creek Substation location



Oyster Creek Substation Preliminary APE