

Ocean Wind Offshore Wind Farm

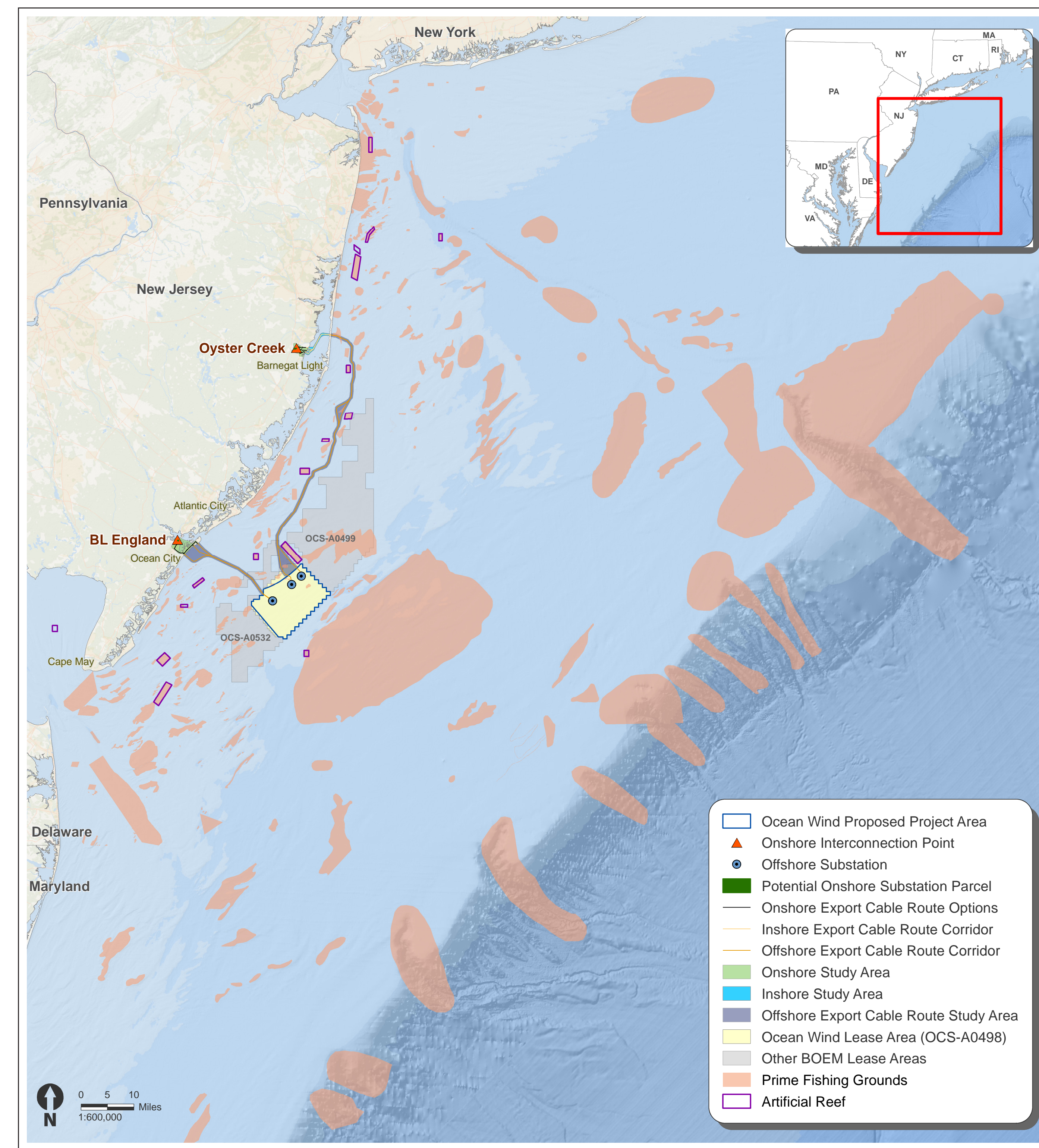
# Regional Fisheries Assessments

Available data:

- **National Marine Fisheries Service/Northeast Fisheries Science Center:** Ongoing seasonal offshore surveys.
  - Bottom Trawl Survey
  - Atlantic Surfclam and Ocean Quahog Survey
  - Sea Scallop Survey
  - Ecosystem Monitoring (EcoMon) Survey
- **Northeast Area Monitoring and Assessment Program Southern New England/Mid-Atlantic Nearshore Trawl Survey:** Ongoing seasonal nearshore bottom trawl surveys.
- **New Jersey Department of Environmental Protection Ocean Stock Assessment Survey:** Ongoing seasonal trawl surveys.
- **Available GIS data:** prime fishing areas, artificial reefs, shellfish habitat, migratory finfish pathways, etc.



## Prime Fishing Grounds and Artificial Reefs



 For more information on BOEM's Renewable Energy Program, visit [www.boem.gov/Renewable-Energy](http://www.boem.gov/Renewable-Energy)

Source: New Jersey Department of Environmental Protection (NJDEP). 2019. Prime Fishing Grounds of New Jersey, Edition 20190201. Accessed at: <https://njgis-newjersey.opendata.arcgis.com/datasets/njdep::prime-fishing-grounds-of-new-jersey>.