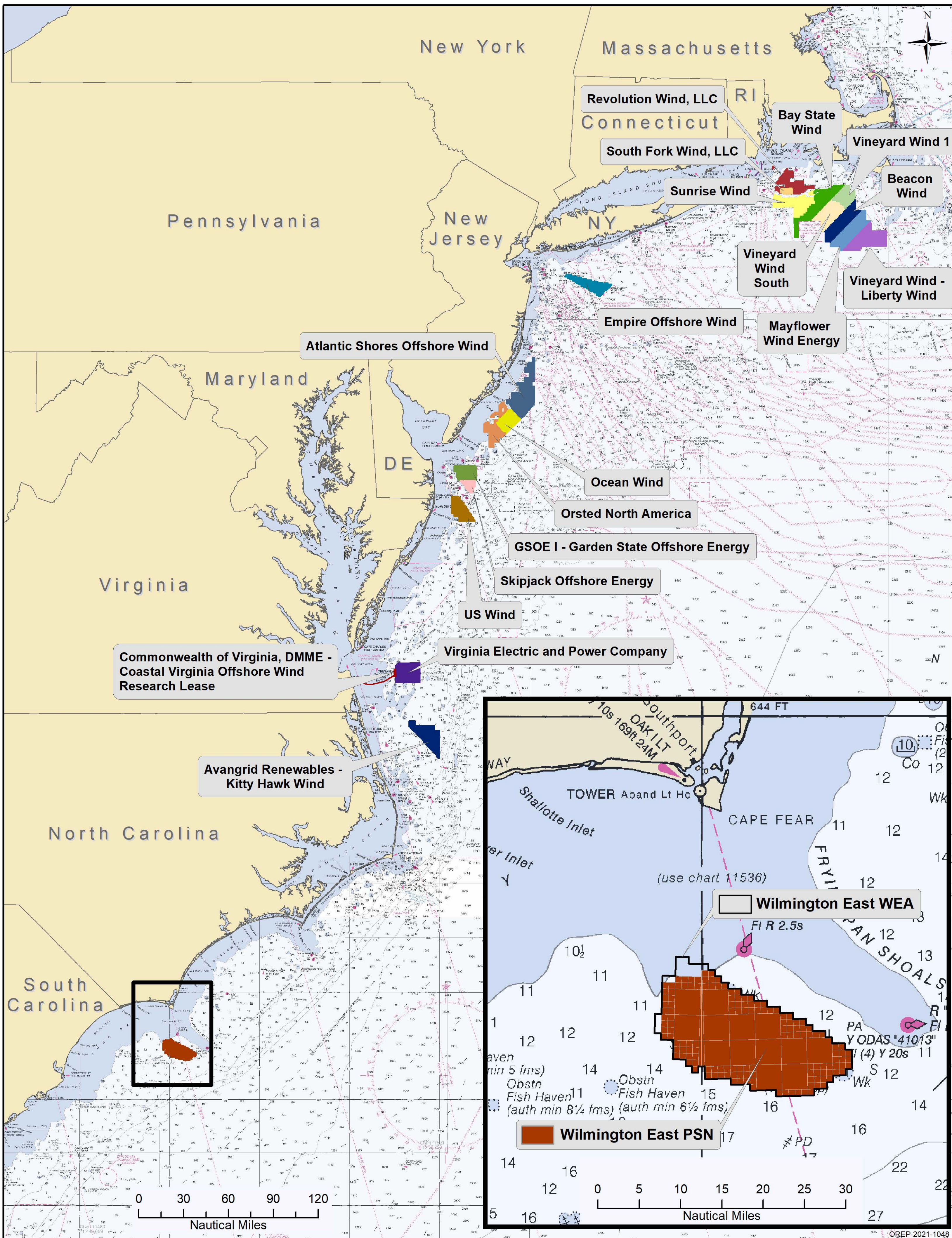


Outer Continental Shelf Renewable Energy Lease Areas

In 2009, BOEM announced final regulations for the Outer Continental Shelf (OCS) Renewable Energy Program. The Energy Policy Act of 2005 and various regulations provide a framework for issuing leases, easements and rights-of-way for OCS activities that support production and transmission of energy from sources other than oil and natural gas. BOEM is responsible for offshore renewable energy development in Federal waters and anticipates substantial future development on the OCS.

This map depicts active commercial and research renewable energy leases issued on the Atlantic OCS by BOEM. Where possible, individual projects have been identified.

<p>U.S. Department of the Interior Bureau of Ocean Energy Management Office of Renewable Energy Programs</p>	<p>Atlantic Offshore Renewable Energy Leases</p>
---	---



This map depicts active commercial and research renewable energy leases issued on the Atlantic Outer Continental Shelf by the Bureau of Ocean Energy Management. Where possible individual projects have been identified.

<p>Data Sources: BOEM, GEBCO, NOAA, US Census Bureau Map Date: 12/09/2021</p>	