

Ocean Wind Offshore Wind Farm COP, June 14, 2022
Errata Sheet Issued July 26, 2022

The following figures have been revised to show the updated inshore export cable route depictions for the Oyster Creek study area.

Volume I

- Figure 5.1-2. Project location - Barnegat Bay/Oyster Creek. *page 75*

Volume II

- Figure 2.1.2-26. NJ SWQS for the Oyster Creek study area. *page 78*
- Figure 2.2.1-2. NJDEP Landscape Project data for the Oyster Creek study area. *page 78*
- Figure 2.2.1-5. Oyster Creek study area NWI and NJDEP wetland data. *page 113*
- Figure 2.2.1-7. Streams in the Oyster Creek study area. *page 161*
- Figure 2.2.5-2. Mapping of hardclams by NJDEP in central Barnegat Bay around Oyster Creek. *page 161*
- Figure 2.2.5-4. Aerial SAV mapping by Rutgers (Lathrop and Haag 2011), NJDEP (1979 and 1985), and Ocean Wind (2019) in Barnegat Bay around Oyster Creek. *page 166*
- Figure 2.2.5-6. Phase 1 and 2 SAV surveyed areas in Barnegat Bay and pre-construction survey areas. *page 168*
- Figure 2.3.2-2. Oyster Creek – Block groups with higher minority rate than County. *page 273*
- Figure 2.3.2-3. Oyster Creek - Block groups with higher poverty rate. *page 274*
- Figure 2.3.3-1. Recreation areas within the Oyster Creek study area in Ocean County. *page 284*
- Figure 2.3.4-8. Aquaculture lease sited near Oyster Creek (Source: NJDFW 2018c). *page 307*
- Figure 2.3.5-2. Oyster Creek - NJDEP land use (NJDEP 2015). *page 334*

Appendix P

- Figure 3 – Results of the 2019 Aerial Survey of Barnegat Bay. *page 18*

Revision to depiction of onshore route near northern-most landfall.

Volume II

- Figure 2.2.1-3. Surveyed wetland areas in the Oyster Creek study area. *page 110*

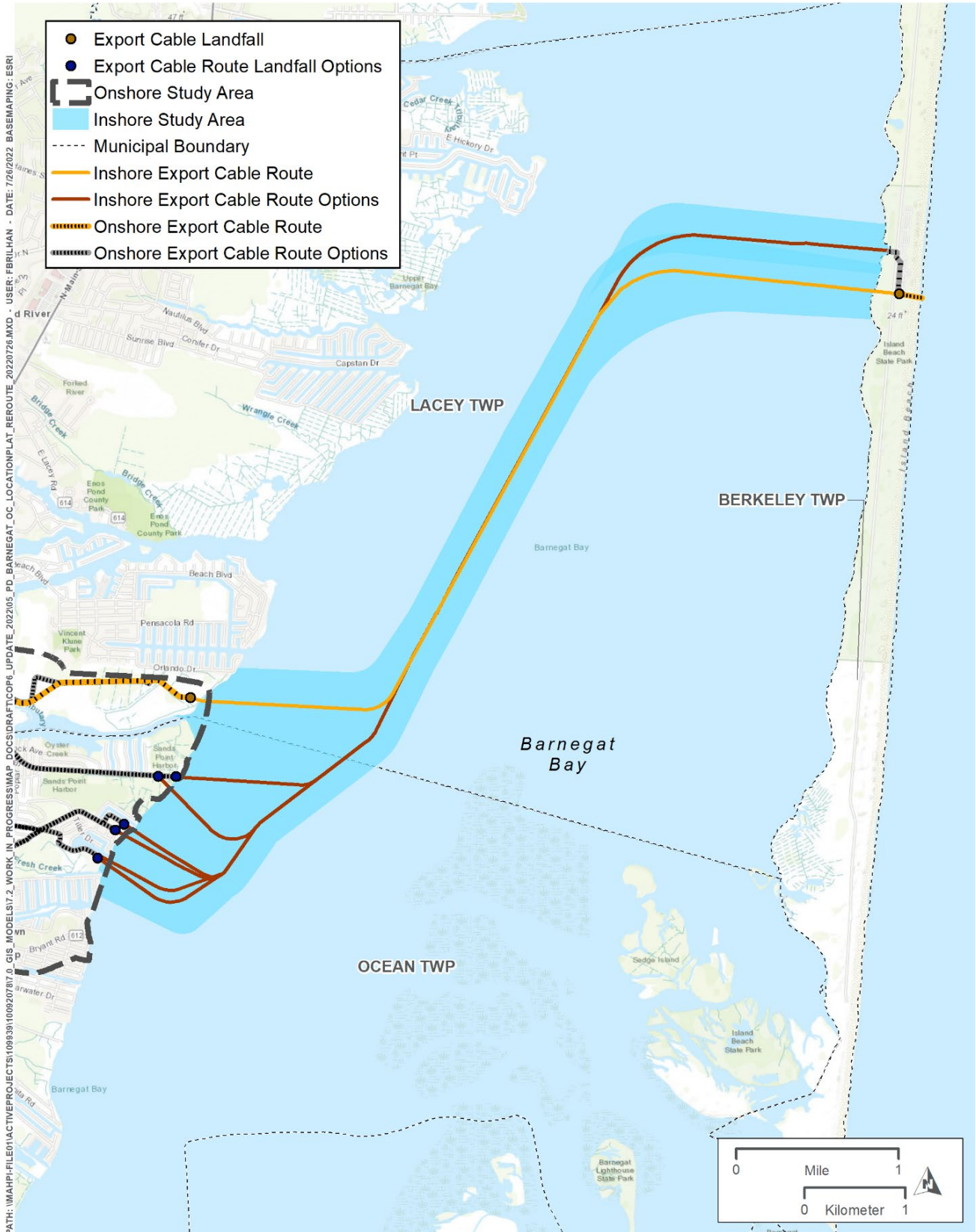


Figure 5.1-2. Project location - Barnegat Bay/Oyster Creek.

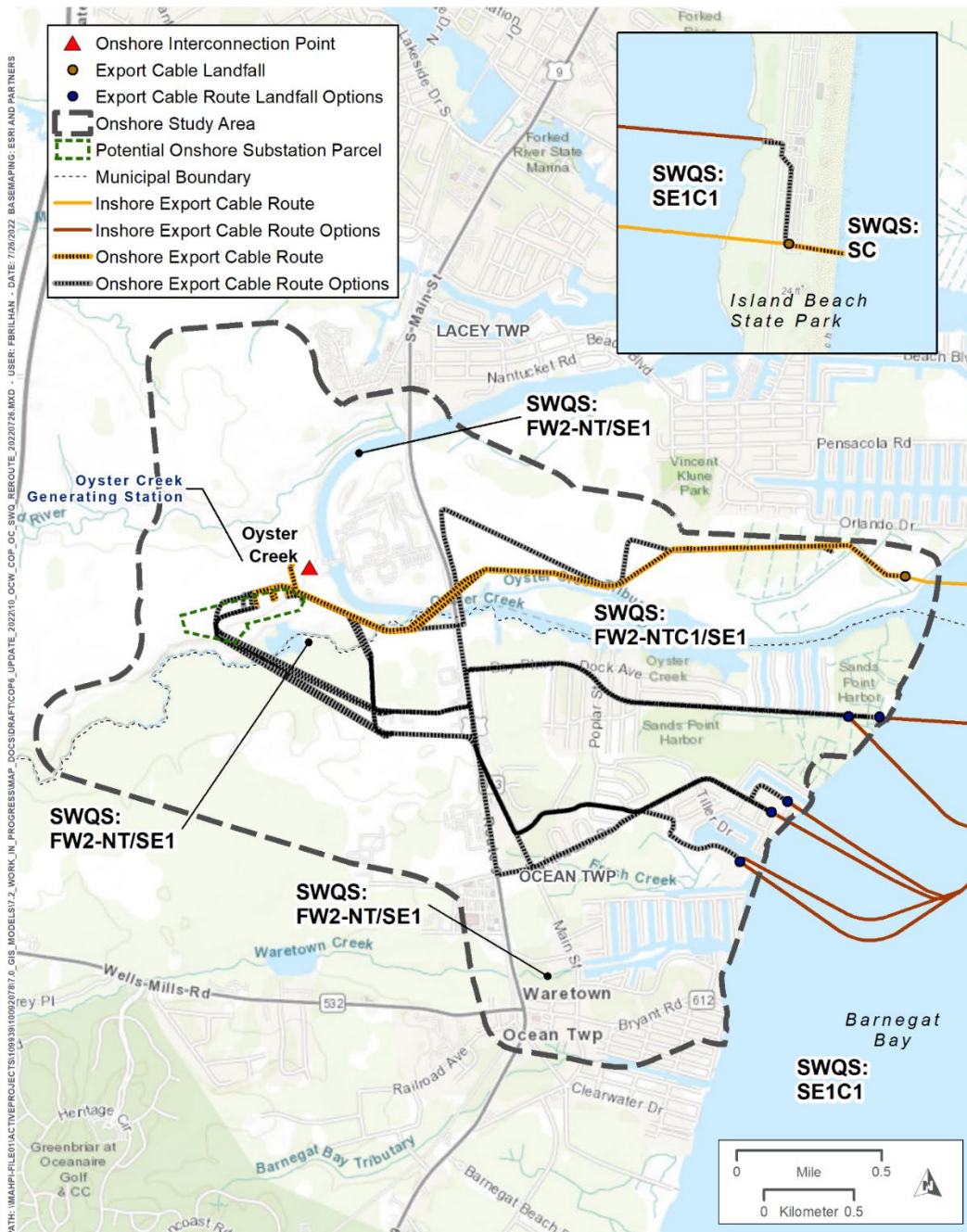


Figure 2.1.2-26. NJ SWQS for the Oyster Creek study area.

Classifications for NJ SWQS Found at N.J.A.C. 7:9B:

FW1 - Freshwaters that are Outstanding National Resource Waters of the State

FW2 - General classification that applies to fresh waters that are not designated as FW1 or Pinelands Waters

NT - Nontrout waters

SE1 - General surface water classification for saline waters of estuaries

C1 - Category One Waters

PL - Pineland Waters

PATH: \\MARHP-FILE01\ACTIVE\PROJECTS\0993911009207817.0_GIS_MODELS\7.2_WORK_IN_PROGRESS\MAP_DOCS\DRIFT\COPI6_UPDATE_202214_OCW_COP_OC_LANDSCAPE_NEROUTE_20220726.MXD - USER: FBRIHAN - DATE: 7/26/2022 BASEMAPING: ESRI AND PARTNERS

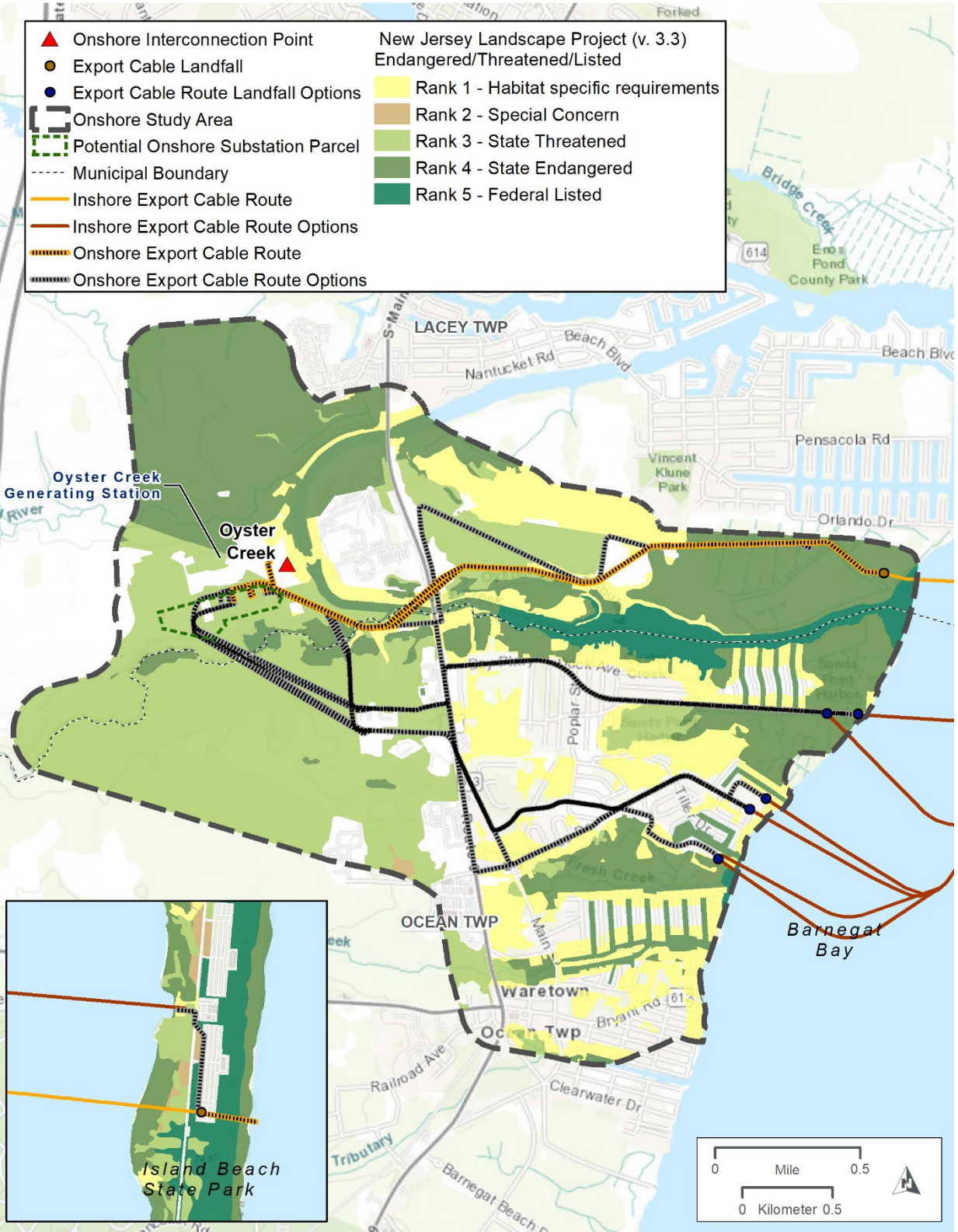


Figure 2.2.1-2. NJDEP Landscape Project data for the Oyster Creek study area.

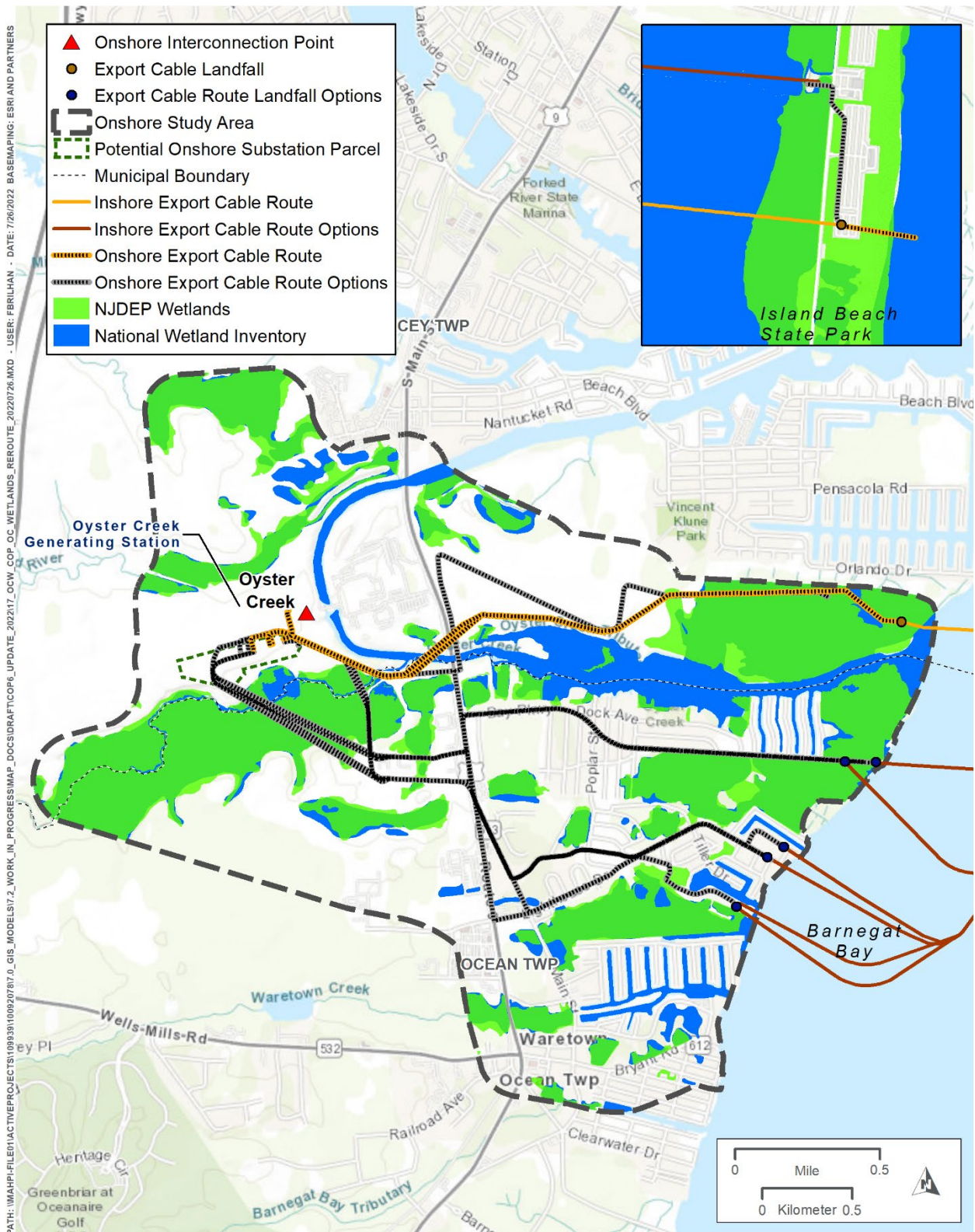


Figure 2.2.1-5. Oyster Creek study area NWI and NJDEP wetland data.

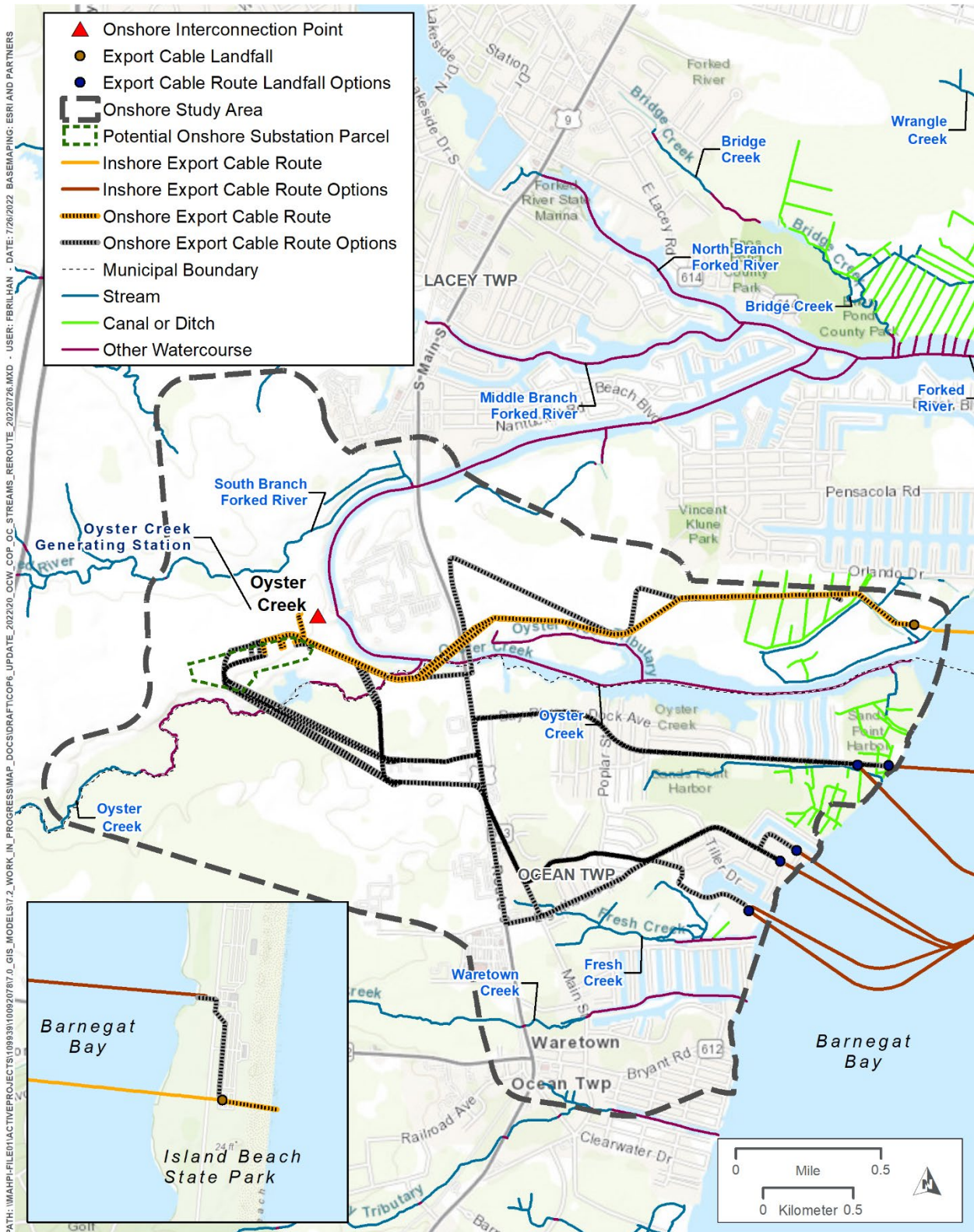


Figure 2.2.1-7. Streams in the Oyster Creek study area.

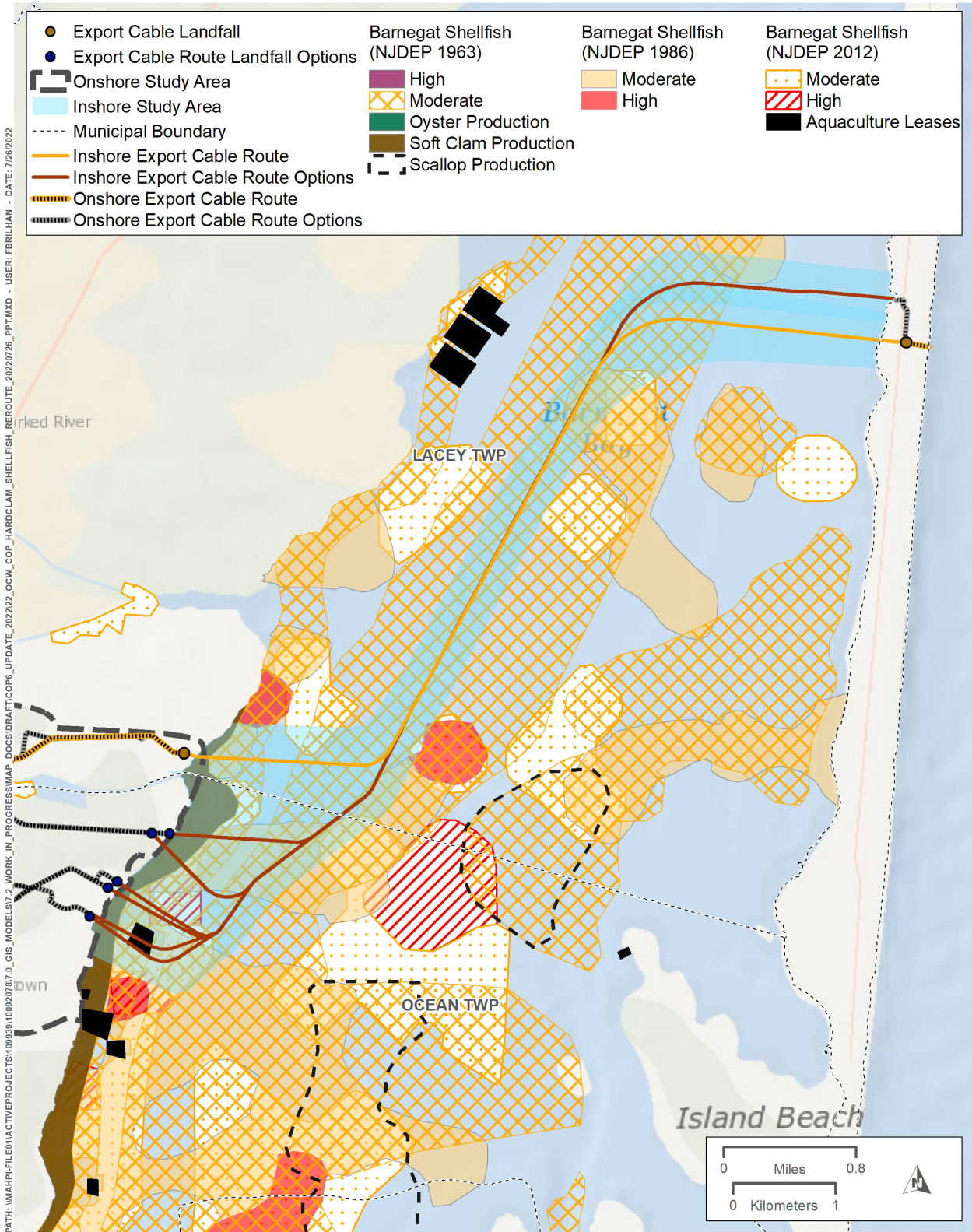


Figure 2.2.5-2. Mapping of hardclams by NJDEP in central Barnegat Bay around Oyster Creek.

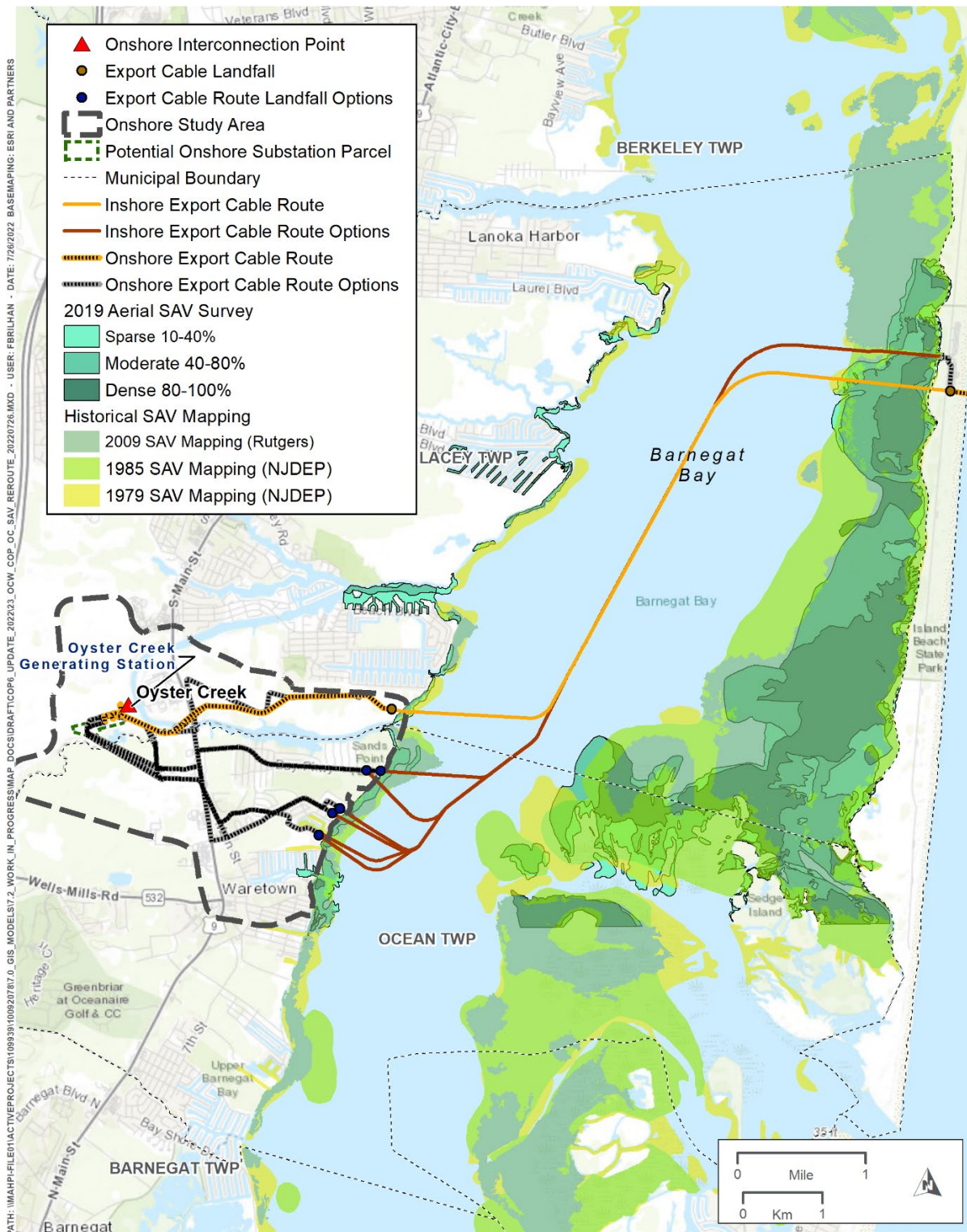


Figure 2.2.5-4. Aerial SAV mapping by Rutgers (Lathrop and Haag 2011), NJDEP (1979 and 1985), and Ocean Wind (2019) in Barnegat Bay around Oyster Creek.

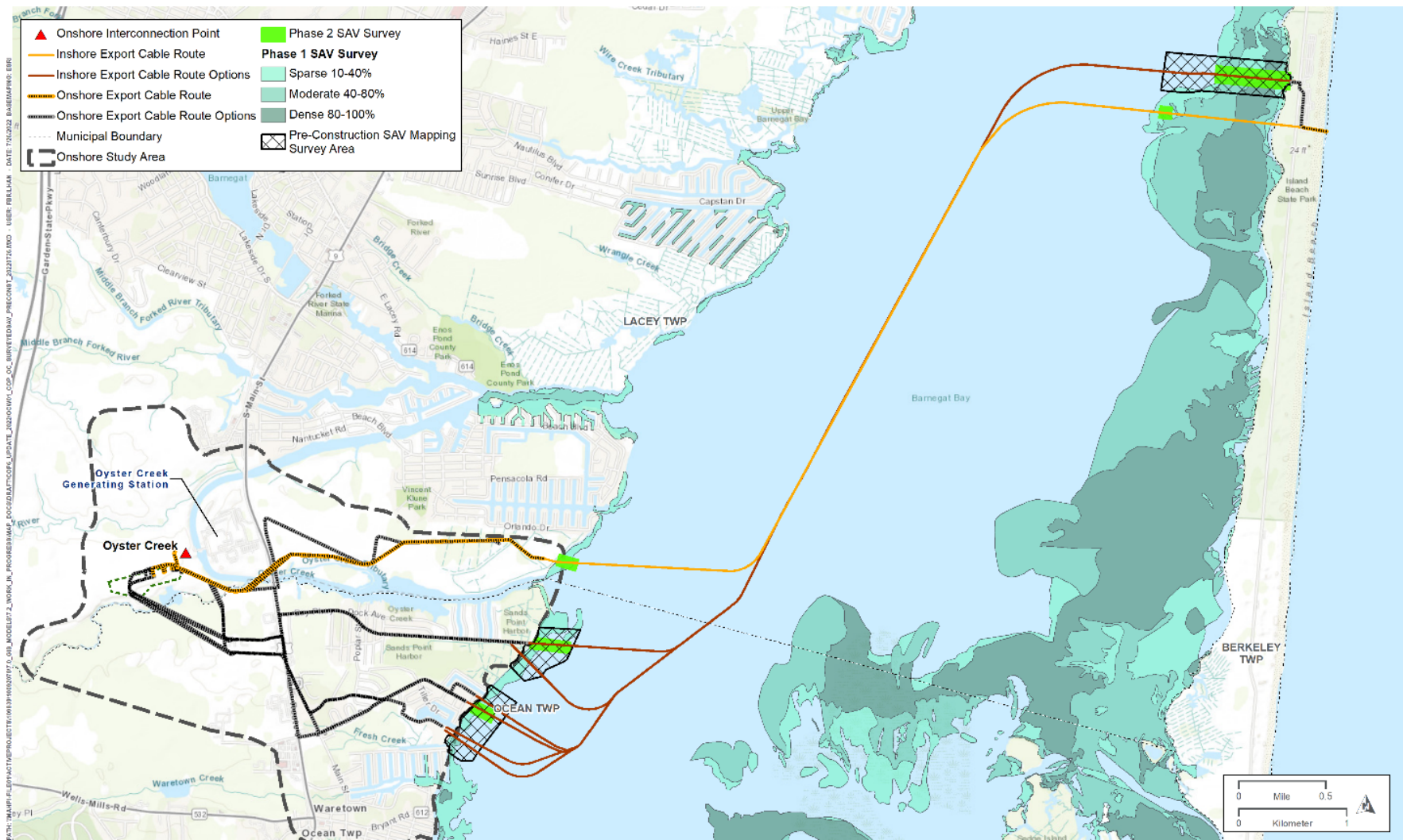


Figure 2.2.5-6. Phase 1 and 2 SAV surveyed areas in Barnegat Bay and pre-construction survey areas.

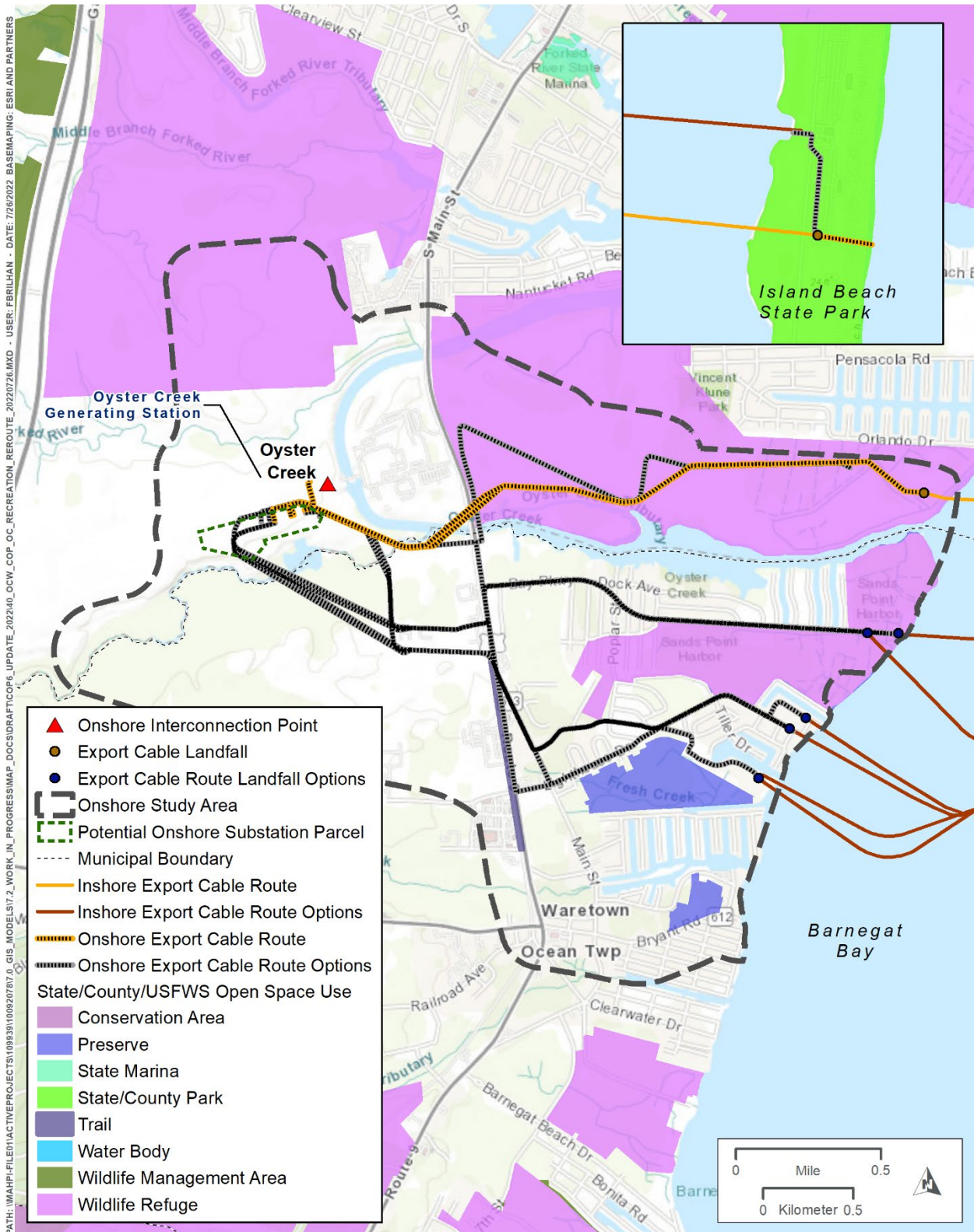


Figure 2.3.3-1. Recreation areas within the Oyster Creek study area in Ocean County.

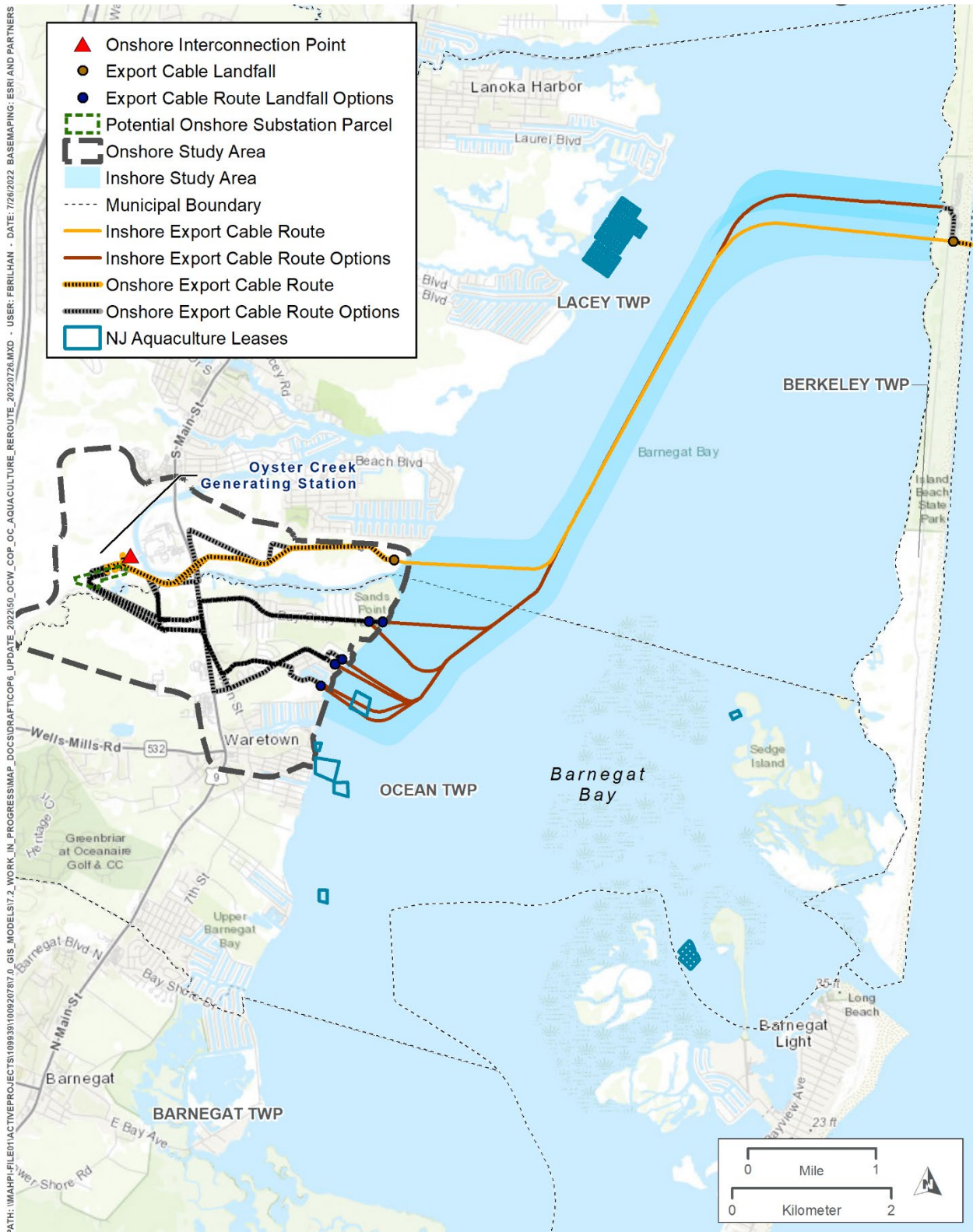


Figure 2.3.4-8. Aquaculture lease sited near Oyster Creek (Source: NJDFW 2018c).

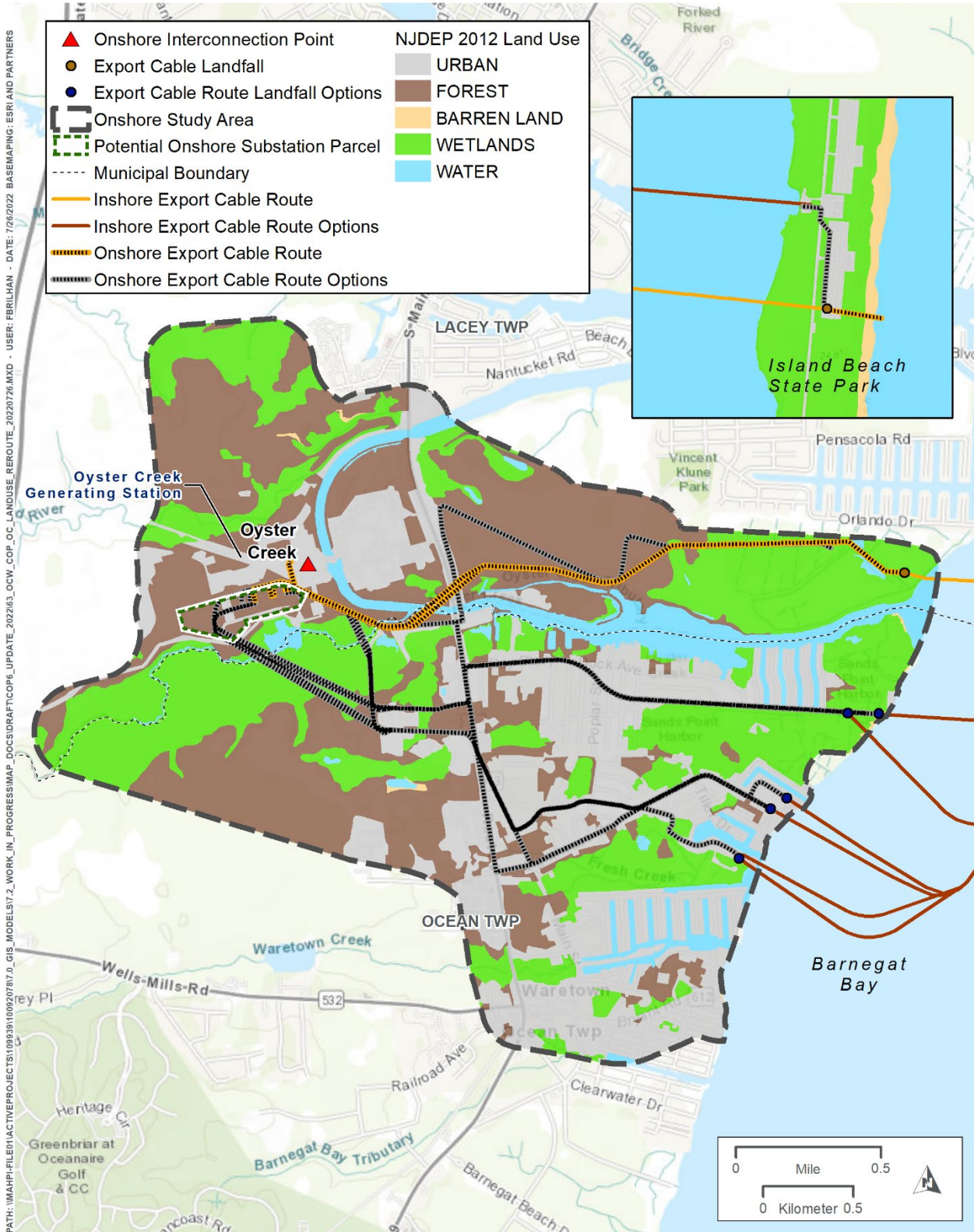


Figure 2.3.5-2. Oyster Creek - NJDEP land use (NJDEP 2015).

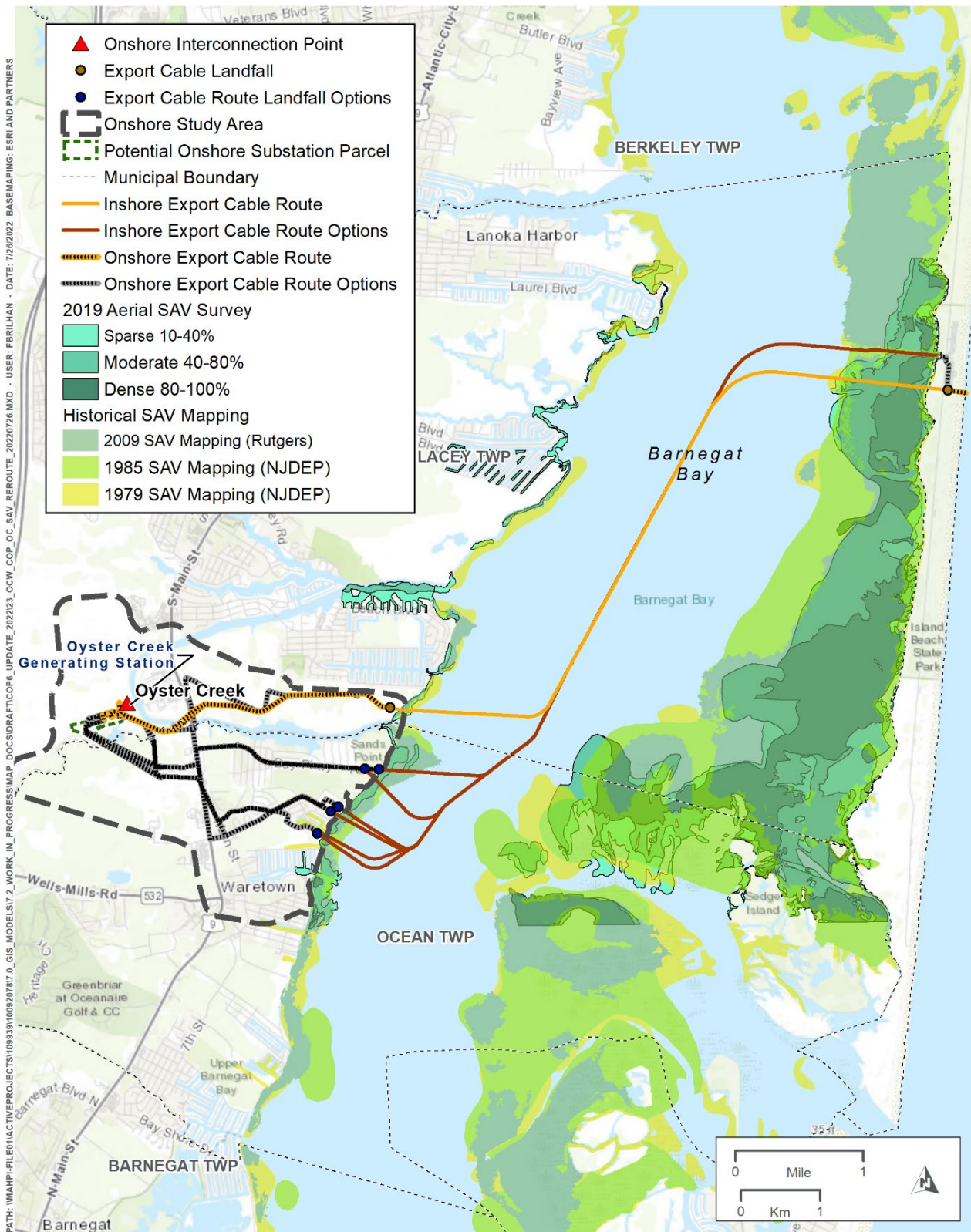


Figure 3 – Results of the 2019 Aerial Survey of Barnegat Bay.

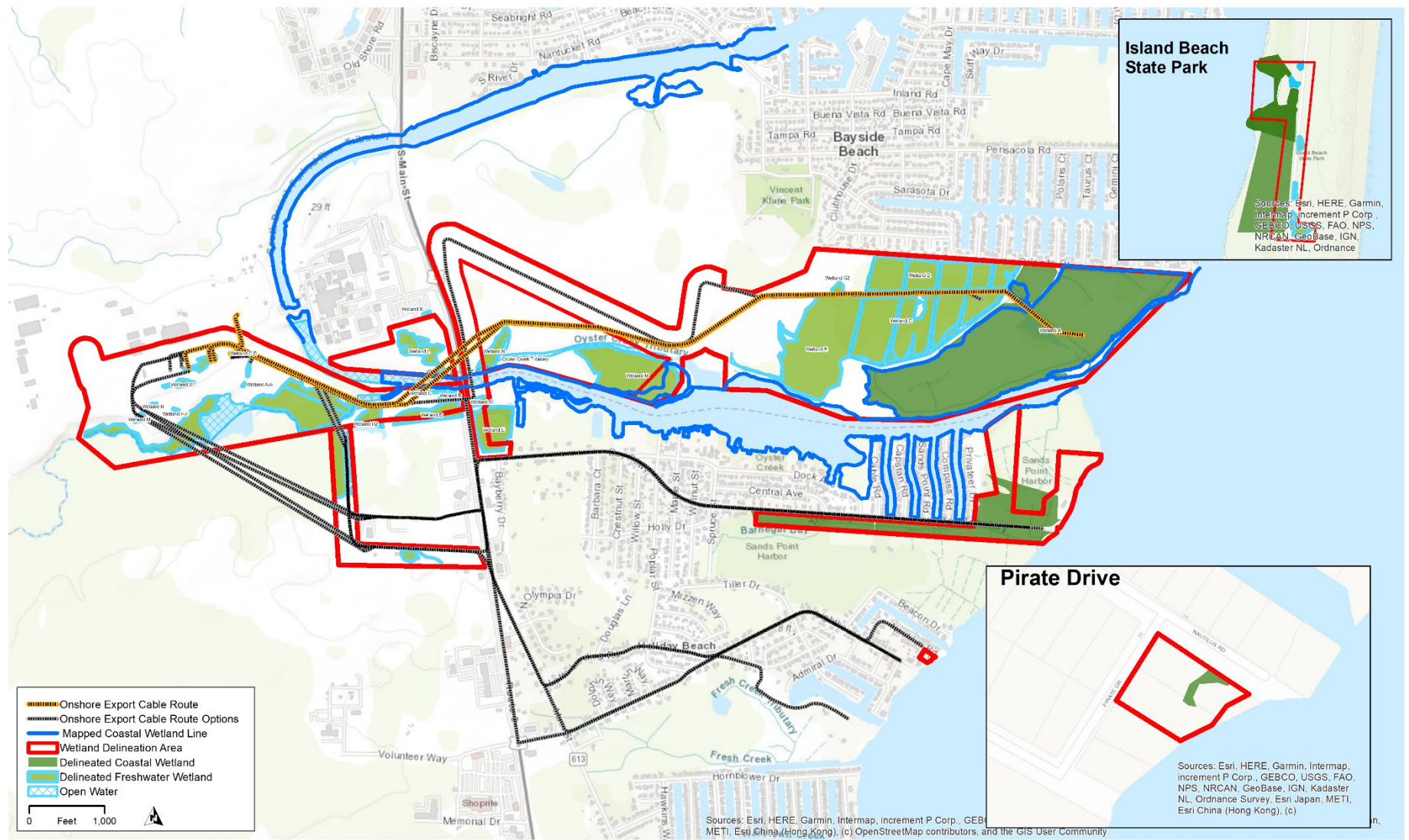


Figure 2.2.1-3. Surveyed wetland areas in the Oyster Creek study area.