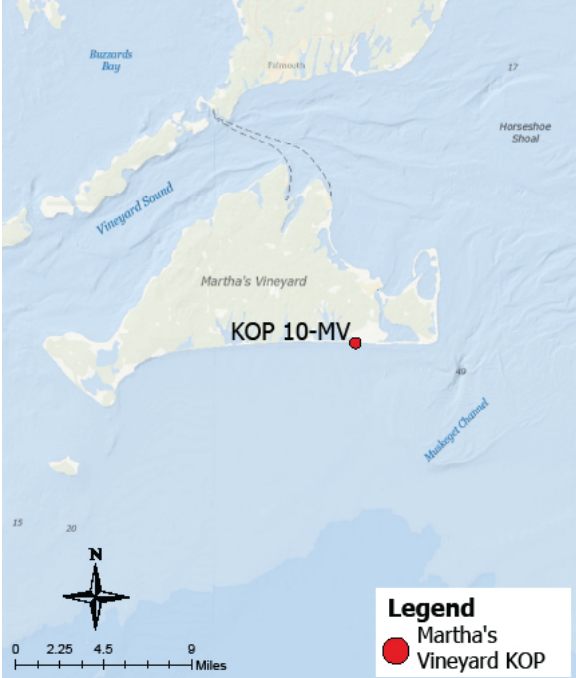


Panoramic Photograph



The sheet should be viewed on a 24 inch monitor scaling the red square to 11" x 17". To view the area outside of the red square, pan the surrounding panoramic image maintaining the 11" x 17" size within the red square.

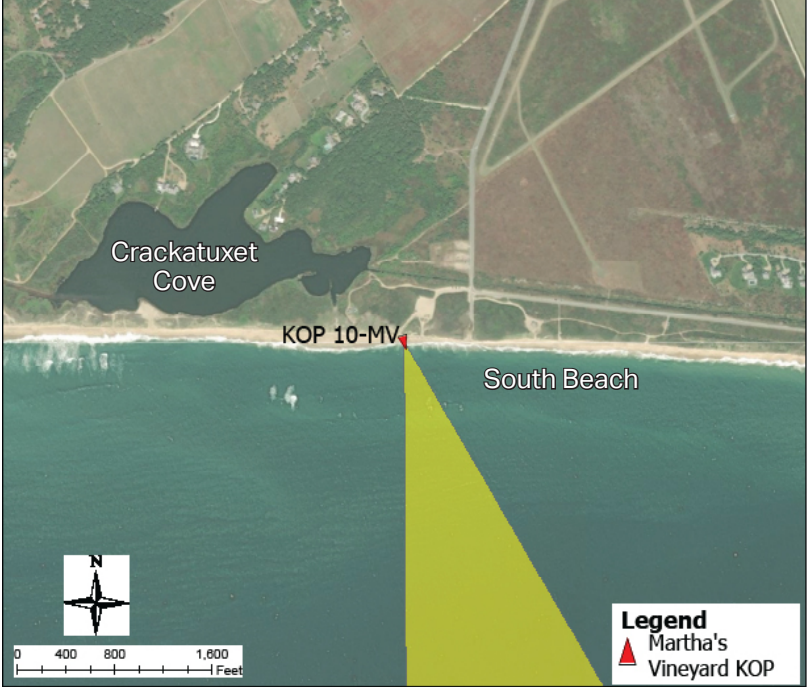
Baseline Conditions Map



Photograph Information

Location		Project View	
Viewpoint Location	Katama/South Beach	Horizontal Field of View	147.2°
Date of Photograph	6/18/21	Horizontal FOV Occupied	31.5°
Seascape/Landscape Character Area	Ocean Beach	Vertical Field of View	39.6°
Time of Photograph	12:25 pm	Viewing Direction	182°
Latitude	41°20'59.36"N	Elevation+Tripod Height:	13.5 Feet
Longitude	70°31'40.18"W	Camera Settings:	
Environment		Camera Model	Nikon D4
Temperature	73°F	fstop	f/14
Percent Humidity	64%	ISO	720
Wind Direction & Speed	SW 12 mph	Shutter (seconds)	1/3200
Weather Condition	Clear		
Tidal Height	High-Mid		
Sun Angle	Front-Lit		
Sun Elevation	71.67°		

Context Map



Access
Public beach recreation
Adjacent Amenities
Hotel, restaurants, public restroom and changing facilities
Adjacent SLCAs
Ocean beach, coastal dunes, coastal scrub bush, medium density residential structures, agricultural/open fields
Adjacent KOPs
MV11 Katama Point Public Launch, MV06 Wilson's Landing

KOP-MV10 | Katama/South Beach | Beacon Wind Project

Baseline Conditions Overview



Time of Day: Afternoon
Weather Condition: Clear
Image: Pre-Project Construction

The sheet should be printed at 11 x 17 inches; full size with no scaling; and viewed at arm's length (24 inches). If viewed on a computer monitor, the document should be viewed on a 24 inch monitor and scaled to 100 percent in Adobe Acrobat at arm's length (24 inches).

KOP-MV10 | Katama/South Beach | Beacon Wind Project

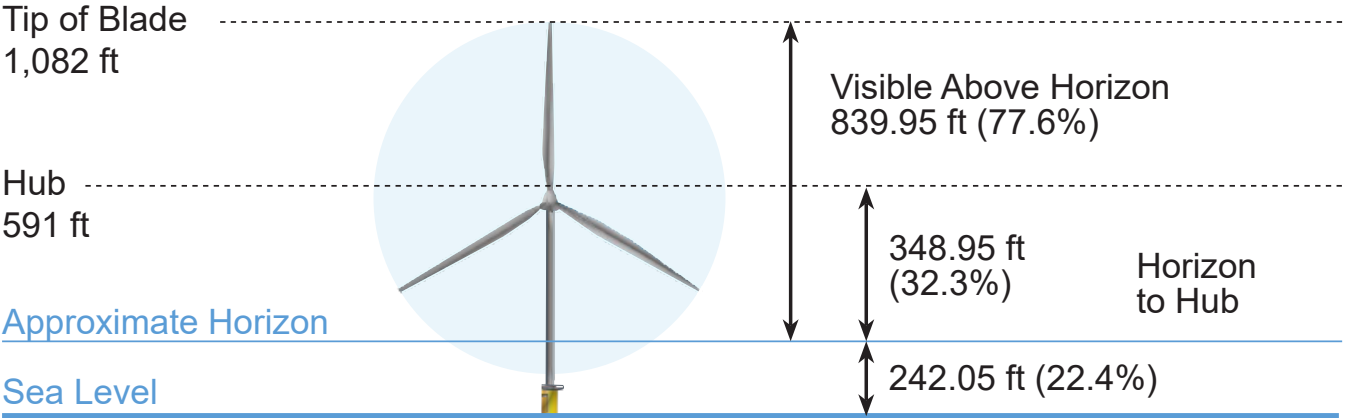
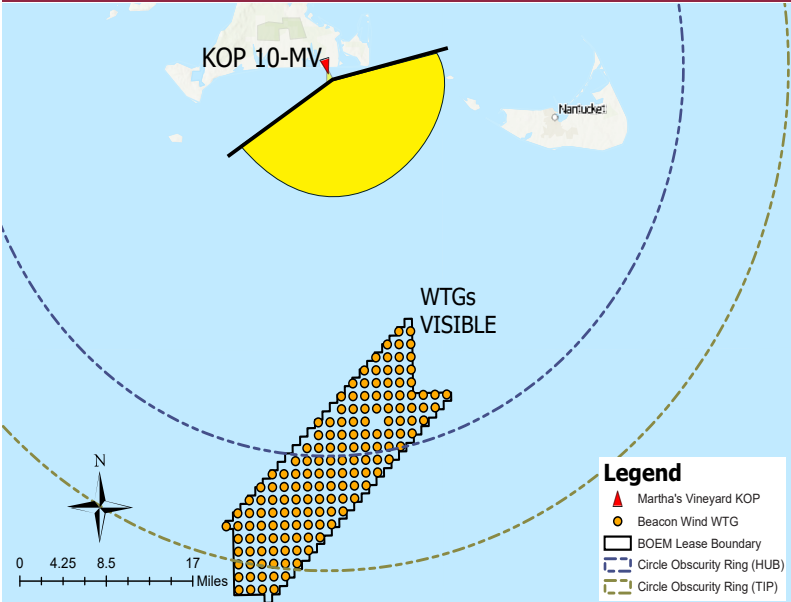
Baseline Conditions

Panoramic Photograph



The sheet should be viewed on a 24 inch monitor scaling the red square to 11" x 17". To view the area outside of the red square, pan the surrounding panoramic image maintaining the 11" x 17" size within the red square.

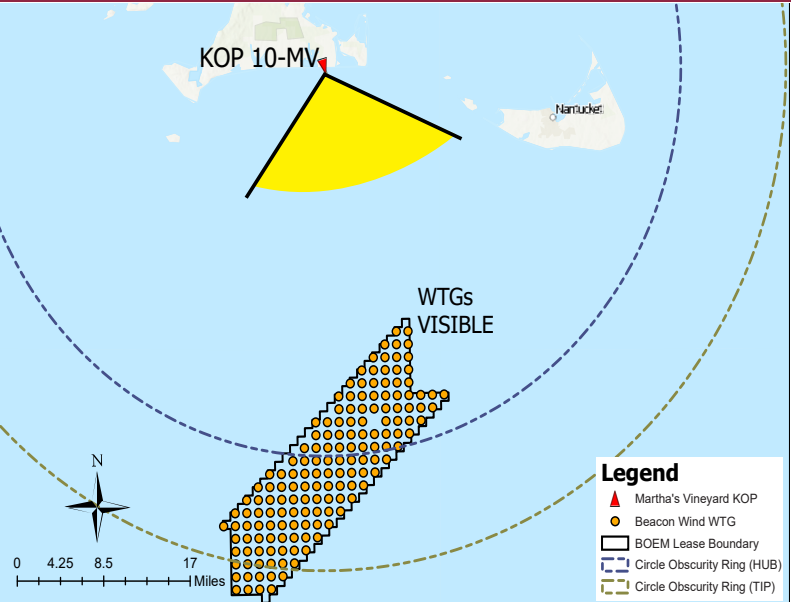
Simulated Conditions



Simulated Conditions Turbine Data

Turbine Data	
Closest Visible WTG	24.86 miles
Furthest Visible WTG	47.90 miles
Structures Potentially Visible	140
Structures Potentially Not Visible	15

Simulated Conditions



Viewing angle depicted above reflects the cropped view shown on the following page

KOP-MV10 | Katama/South Beach | Beacon Wind Project

Simulated Conditions Overview

BEACON WIND PROJECT

Time of Day: Afternoon
Weather Condition: Clear
Image: Pre-Project Construction

The sheet should be printed at 11 x 17 inches; full size with no scaling; and viewed at arm's length (24 inches). If viewed on a computer monitor, the document should be viewed on a 24 inch monitor and scaled to 100 percent in Adobe Acrobat at arm's length (24 inches).

KOP-MV10 | Katama/South Beach | Beacon Wind Project

Simulated Conditions

Number of WTG shown: 140
Number of WTG out of picture: 15