



BOEM BUREAU OF OCEAN
ENERGY MANAGEMENT

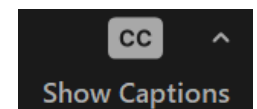
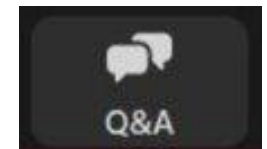
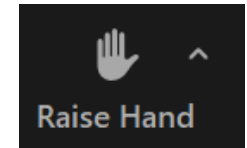
Oregon Wind Lease Issuance Draft Environmental Assessment

June 5, 2024

BOEM Pacific Regional Office

Zoom Instructions

- Public attendees will be muted throughout the webinar and will not be able to unmute themselves until the public comment portion of the agenda.
- Please use the Q&A pod to ask clarifying questions on the Draft EA process to BOEM.
 - Public comment will not be accepted through the Q&A feature.
 - Questions will be addressed during Clarifying Questions at 4:45 p.m. PT.
- Public attendees can share verbal comments during the public comment opportunity at 5:30 p.m. PT.
 - To enter the queue, use the “Raise Hand” button or press *9 on your phone. Please lower your hand once you are done speaking.
- Closed Captioning is available.
- For technical assistance requests, contact aDahlin@kearnswest.com



zm Question and Answer

Welcome to Q&A
Questions you ask will show up here. Only host and panelists will be able to see all questions.

Type your question here...

Who can see your questions?

zm Question and Answer

All questions (1) My questions (1)

GG Gillian Garber-Yonts (You) 09:04 AM

I have a question

This question has been answered live

Type your question here...

Who can see your questions?

Webinar Chat

Ariella Dahlin (She/Her) to Everyone

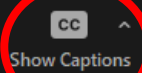
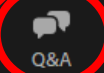
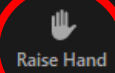
AD Hi all, welcome to the webinar

Who can see your messages?

Chat disabled

Ariella Dahlin (She/Her)

Audio Settings ^



Leave

Webinar Participation Ground Rules

- Honor the agenda.
- Participate actively and respectfully.
- Respect differences of opinion and perspectives.
- Provide your name and affiliation each time you speak.
- Be mindful of your speaking time.

Meeting Objectives

- Provide information on the Oregon Wind Lease Issuance Draft Environmental Assessment (EA) and review process.
- Inform stakeholders about the Oregon areas for potential site assessment and site characterization activities.
- Answer clarifying questions related to the Draft EA.
- Opportunity for the public to provide input on the Oregon Wind Lease Issuance Draft EA.

www.boem.gov/oregonea



Agenda

- Facilitator's Welcome
- Welcome and Opening Remarks
- Presentation - Wind Energy Leasing Authorization Process
- Presentation – Draft Environmental Assessment
- Q&A (use Q&A box to submit questions)
- Public Comment Opportunity
- Closing and Next Steps

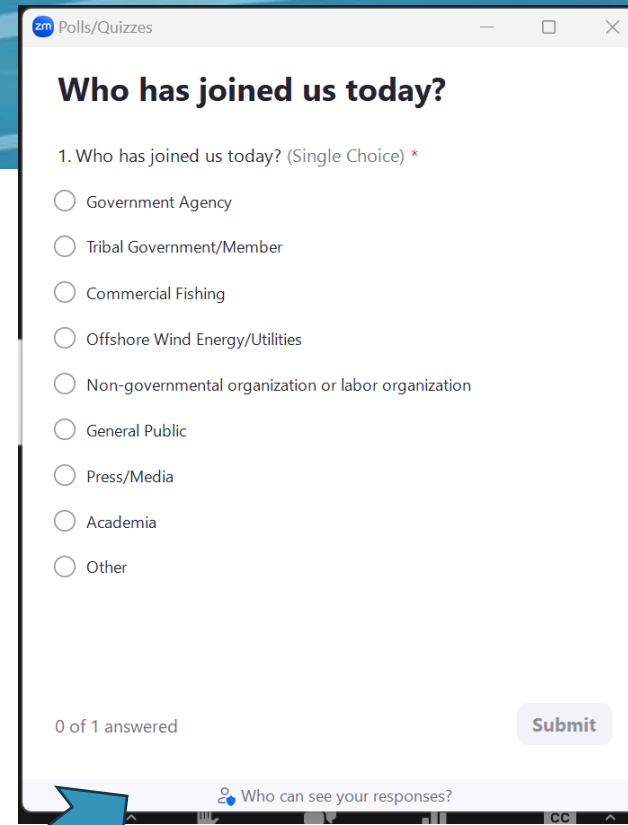
Zoom Poll

Poll questions:

- Who has joined us today?
- Is this your first meeting on offshore wind?
- Are you planning on providing verbal public comment?

Poll instructions:

- A pop-up window will appear on your screen, please respond to the poll question
- Answers will be shown once everyone has had a chance to participate



Who has joined us today?

1. Who has joined us today? (Single Choice) *

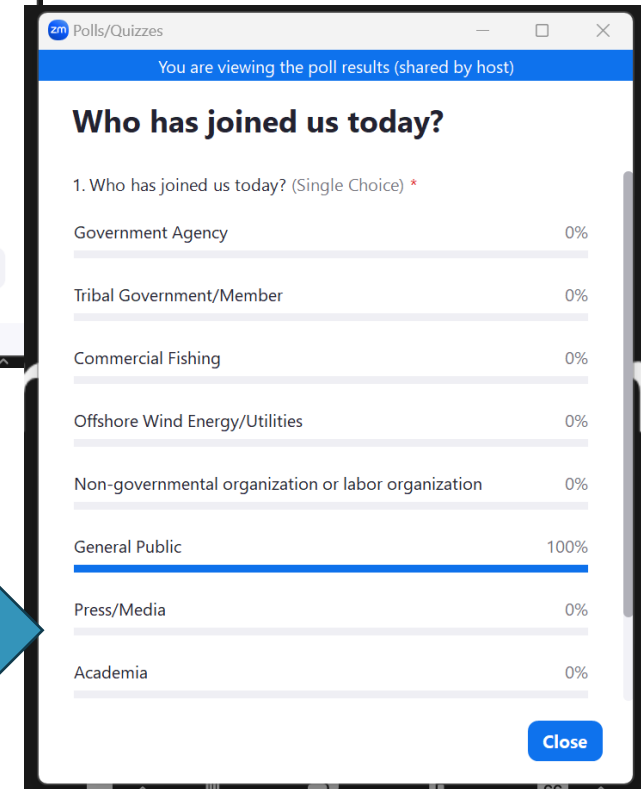
- Government Agency
- Tribal Government/Member
- Commercial Fishing
- Offshore Wind Energy/Utilities
- Non-governmental organization or labor organization
- General Public
- Press/Media
- Academia
- Other

0 of 1 answered

Submit

Who can see your responses?

This screenshot shows a Zoom poll window titled "Who has joined us today?". It contains a single-choice question with nine radio button options: Government Agency, Tribal Government/Member, Commercial Fishing, Offshore Wind Energy/Utilities, Non-governmental organization or labor organization, General Public, Press/Media, Academia, and Other. The status "0 of 1 answered" is shown at the bottom left, and a "Submit" button is at the bottom right. A small icon and text "Who can see your responses?" are visible at the very bottom.



BOEM Staff Present Today

- **Abigail Ryder**, Program Analyst
- **Linette Makua**, NEPA Coordinator
- **Jean Thurston-Keller**, Renewable Energy Specialist & Oregon Task Force Coordinator
- **John Romero**, Public Affairs Officer
- **Rick Yarde**, Office of the Environment Regional Supervisor
- **Lisa Gilbane**, Environmental Analysis Section Chief
- **Natalie Dayal**, Renewable Energy Specialist

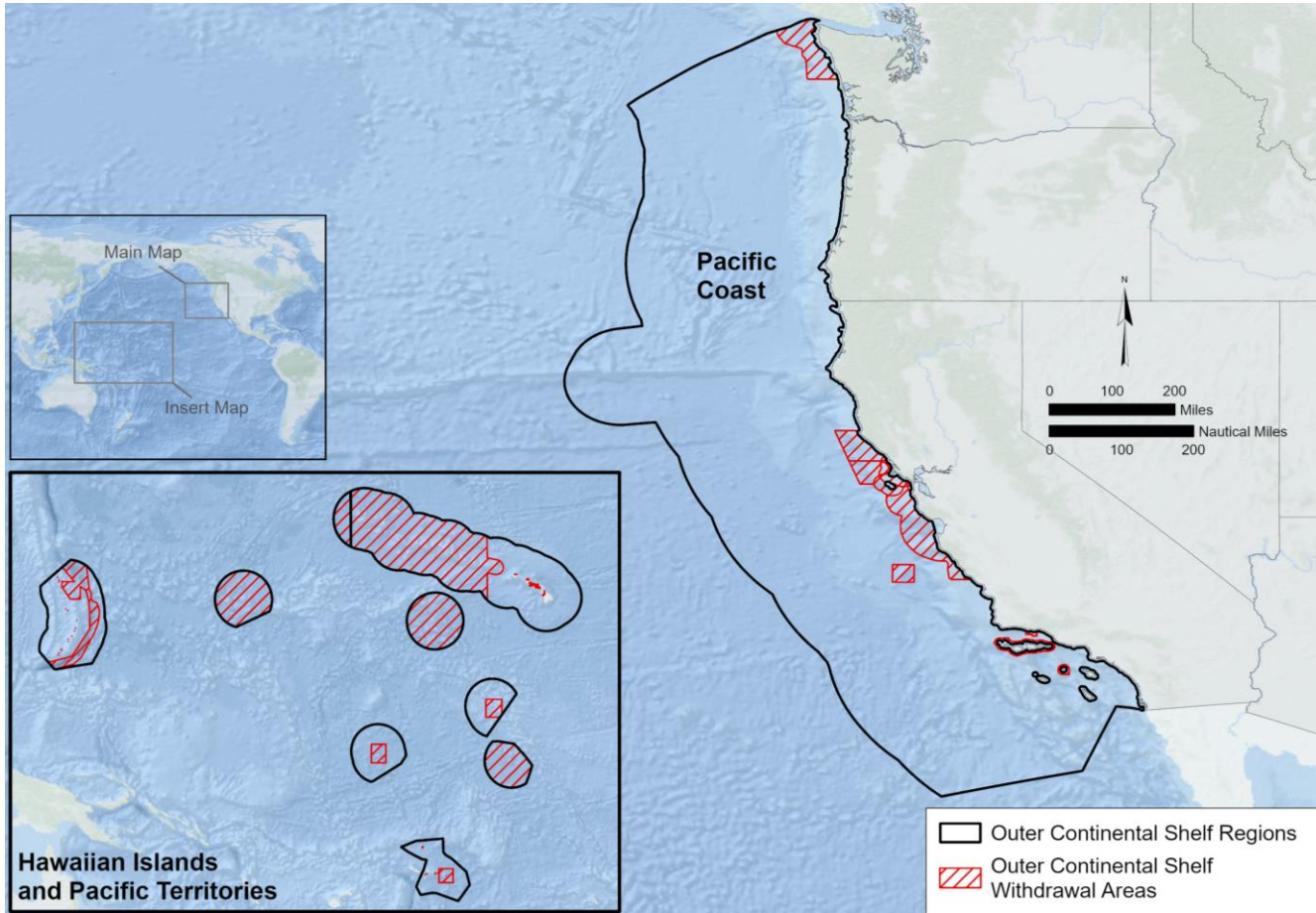
Welcome & Opening Remarks

Lisa Gilbane

Chief of Pacific Environmental Analysis Section



BOEM's Renewable Energy Authority



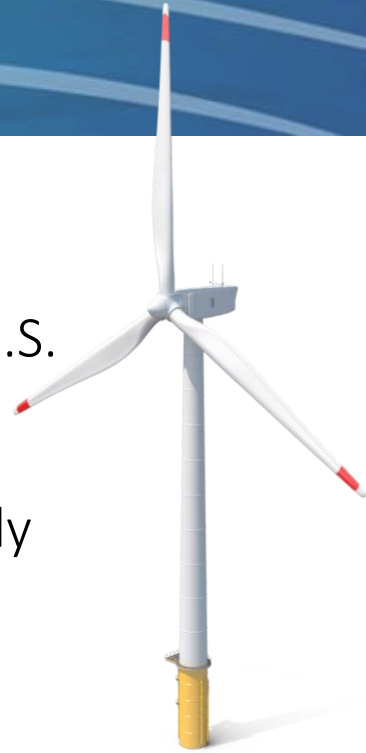
Excludes National Marine Sanctuaries, Marine National Monuments, National Wildlife Refuges, and National Parks

Mission

Manage the development of U.S. Outer Continental Shelf (OCS) energy, mineral, and geologic resources in an environmentally and economically responsible way

Jurisdiction in the Pacific Region

OCS extends generally from 3 to 200 nautical miles off the coast of California, Oregon, Washington, Hawaii, and Pacific U.S. Territories



BOEM Wind Energy Authorization Process Offshore Wind Energy Planning in Oregon

Jean Thurston-Keller
Renewable Energy Specialist



Staged Offshore Wind Energy Authorization Process



BOEM coordinates and consults with affected Tribal, State, and local governments and other Federal agencies
Multiple opportunities for public input



Renewable Energy Process: Call, Wind Energy Areas, and Lease Areas

Call for Information and Nominations (Call)

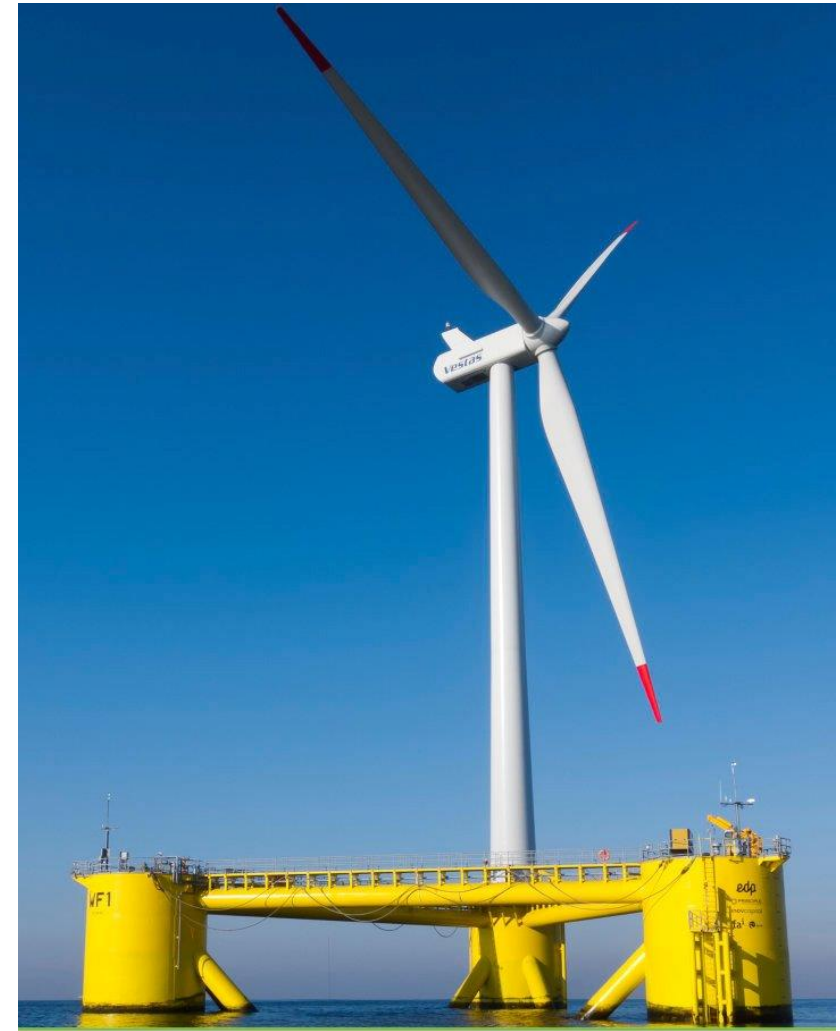
- Calls for formal public comment about the area, uses, and concerns
- Requests nominations of interest for development

Wind Energy Area (WEA)

- An area within a Call Area identified by BOEM for environmental review
- Basis for a lease area(s)

Lease Area

- Areas BOEM offers for lease during a Lease Sale



Aguçadoura WindFloat Prototype
October 2011 - 4KM Offshore of Aguçadoura, Portugal





Offshore Wind Energy Planning in Oregon

- BOEM Oregon Intergovernmental Renewable Energy Task Force established in 2011
- Oregon Department of Land Conservation and Development (DLCD) and BOEM developed [OroWindMap](#)
- [Call for Information and Nominations](#) (Call) published in April 2022
- BOEM partnership with NOAA's National Centers for Coastal and Ocean Science (NCCOS)
- [Coos Bay and Brookings Draft Wind Energy Areas \(WEA\)](#) and [draft NCCOS report](#) published August 2023
- [Final WEAs](#), [Final NCCOS report](#) and [Notice of Intent](#) (NOI) to prepare an Environmental Assessment (EA) announced February 2024
- [Proposed Sale Notice](#) and [Draft EA](#) published May 2024

More information available at www.boem.gov/Oregon



Renewable Energy Leasing: Oregon

Proposed Lease Areas

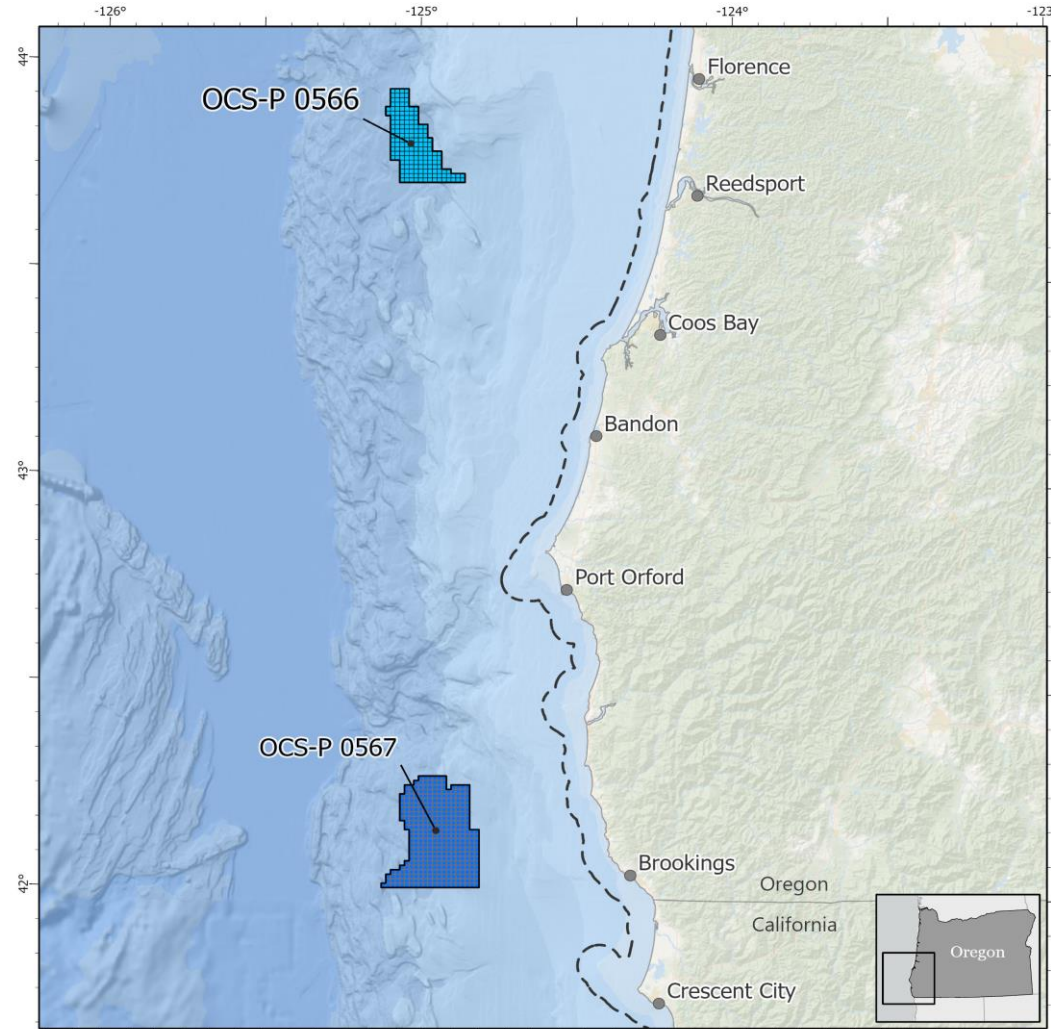
Coos Bay Lease Area

- Capacity: 991 MW*
- Acres: 61,203
- Depth: 635 – 1,414 meters
- Homes Powered: ~346,752

Brookings Lease Area

- Capacity: 2,166 MW*
- Acres: 133,792
- Depth: 567 – 1,531 meters
- Homes Powered: ~758,012

*Capacity estimate based on calculation of 4MW/km²



**Oregon
Proposed
Lease Areas**

- - Federal / State Boundary
■ OCS-P-0566
■ OCS-P-0567

0 20 40
 Miles
 0 30 60
 Kilometers
 Scale: 1:1,360,003

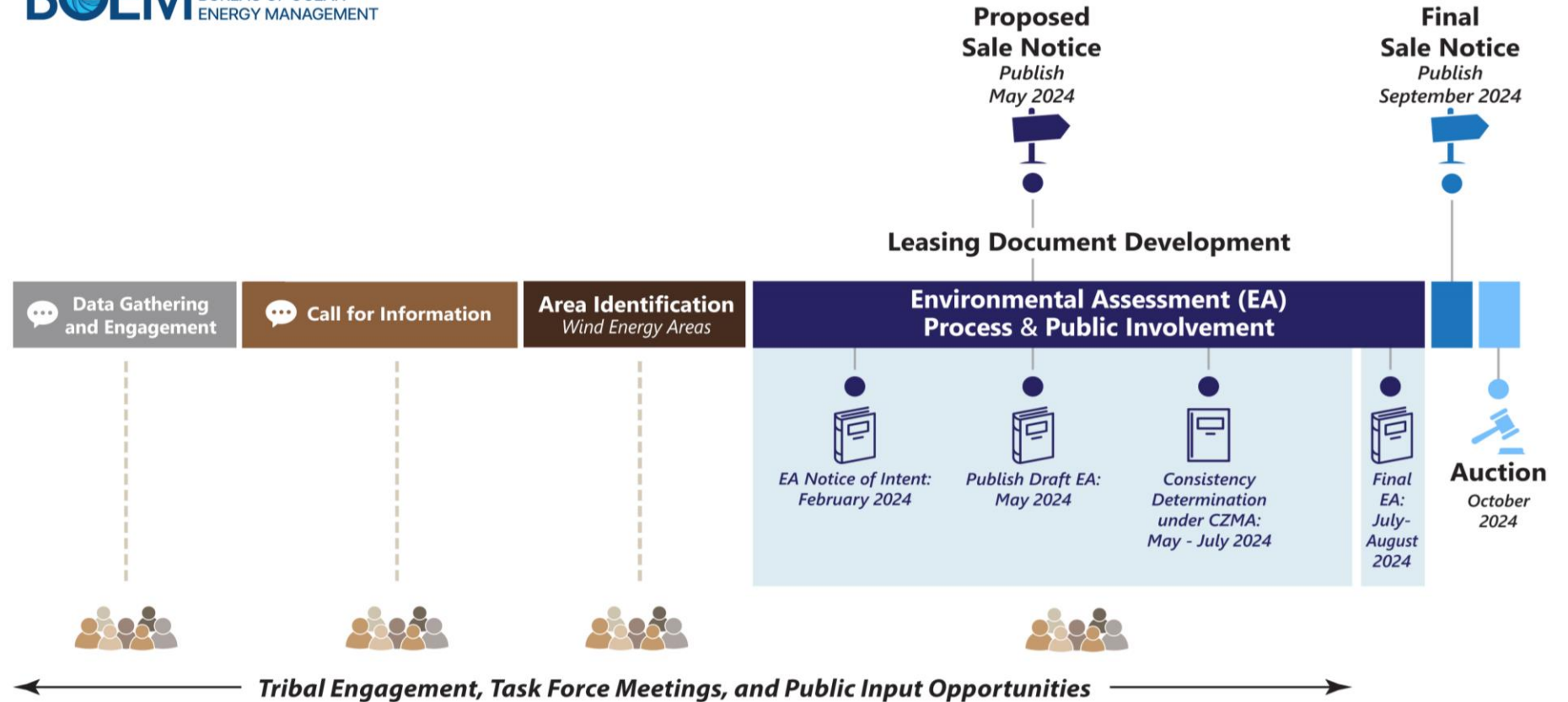
Map Date: 4/12/2024 PAC_10082
 Datum: North American 1983

Esri, TomTom, Garmin, FAO, NOAA, USGS, EPA, USFWS, CHS, Esri, GEBCO, Garmin, NaturalVue

Current Status of BOEM's Authorization Process

Schedule

PROJECTED OREGON RENEWABLE ENERGY LEASING SCHEDULE



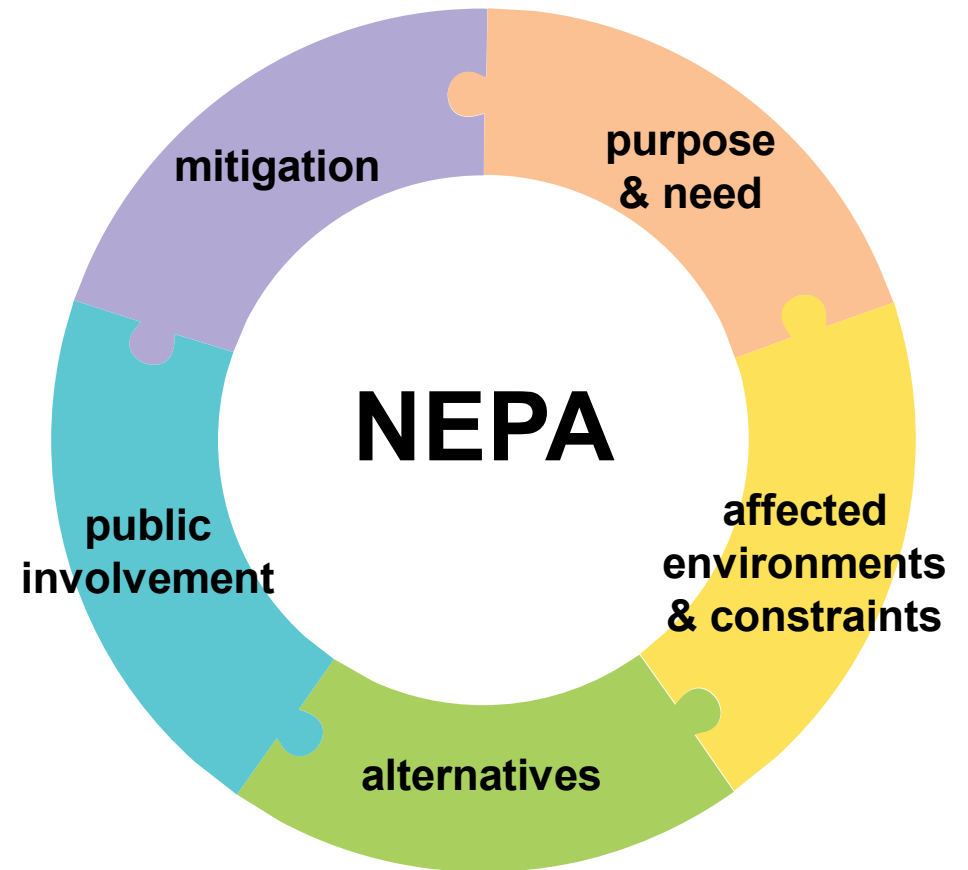
- BOEM coordinates and consults with affected Tribal, State, and local governments and other Federal agencies throughout the process.
- Note that this is a projected leasing schedule contingent upon the process moving forward to the auction stage.

Overview of the National Environmental Policy Act Content of the Draft Environmental Assessment

Linette Makua, NEPA Coordinator

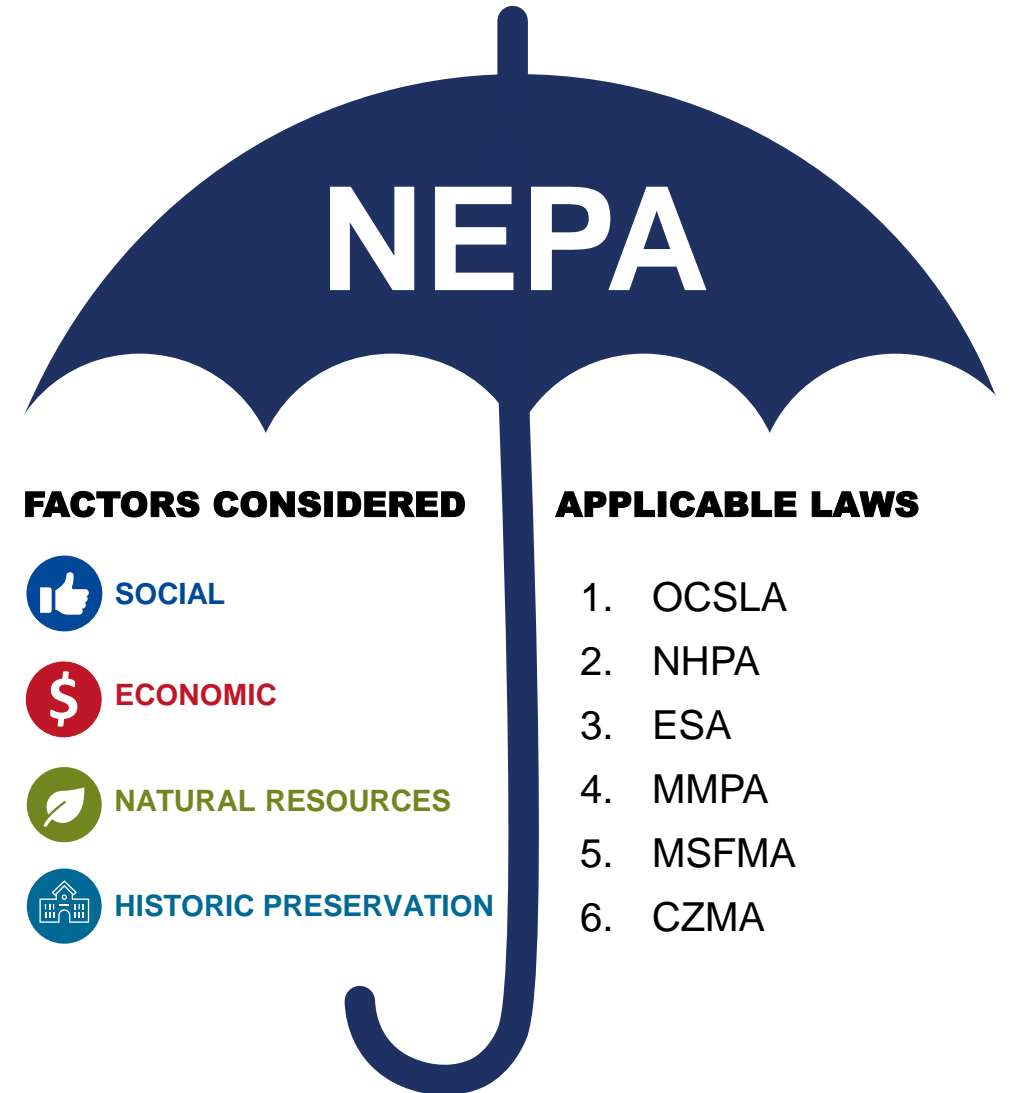
BOEM is guided by the National Environmental Policy Act (NEPA)

- **NEPA** is a procedural law intended to ensure that Federal agencies consider the environmental impacts of their actions in the decision-making process.
- **Environmental Assessments** (EA) are prepared for a proposed action that is not likely to have a significant effect (40 CFR 1501.5)
- This Environmental Assessment is a review of potential impacts associated with **lease issuance**, including **site assessment and site characterization activities**.



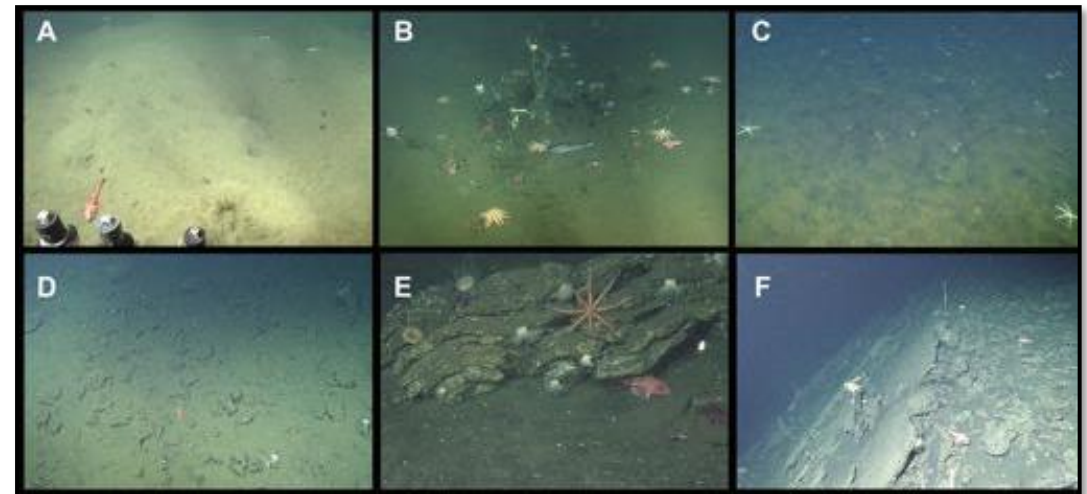
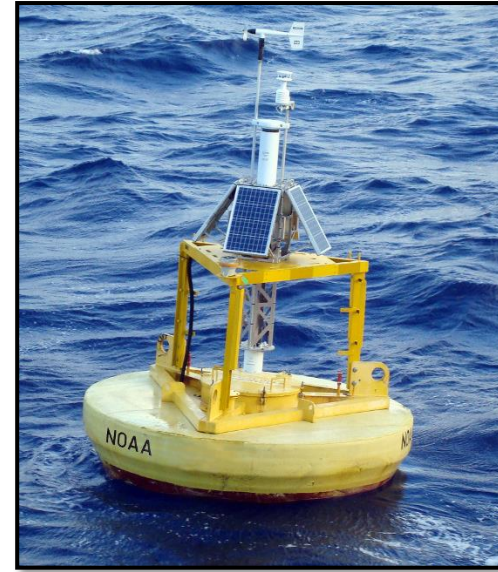
BOEM is guided by the National Environmental Policy Act (NEPA)

- Potential impacts from construction and operations of a project will be evaluated *if and when* a Construction and Operations Plan (COP) is submitted by the lessee.
- **Cooperating Agencies** and **Tribal Nation:** USCG, USACE, USFWS, and Elk Valley Rancheria (40 CFR 1501.8)



Proposed Actions in the Oregon Environmental Assessment

- **Issuance of commercial wind energy lease(s)**, which includes areas within federal waters that might be used for energy production, collection, and transmission
- **Site Characterization Activities** – biological, geotechnical, geophysical, and archaeological surveys
- **Site Assessment Activities** – deployment of one or more buoys to gather oceanographic and meteorological data



Cable Route Corridors

- The Proposed Action includes areas (i.e., **project easements**) in Federal waters for subsea cable corridors and offshore converter platforms that may be associated with a project.
- The EA covers **surveying and sampling** for potential **cable route corridors**, for example geotechnical coring or seafloor sample collections of ocean currents or biology.
- The EA **does not authorize or approve** specific cable corridors at this stage.



Photo by Z22

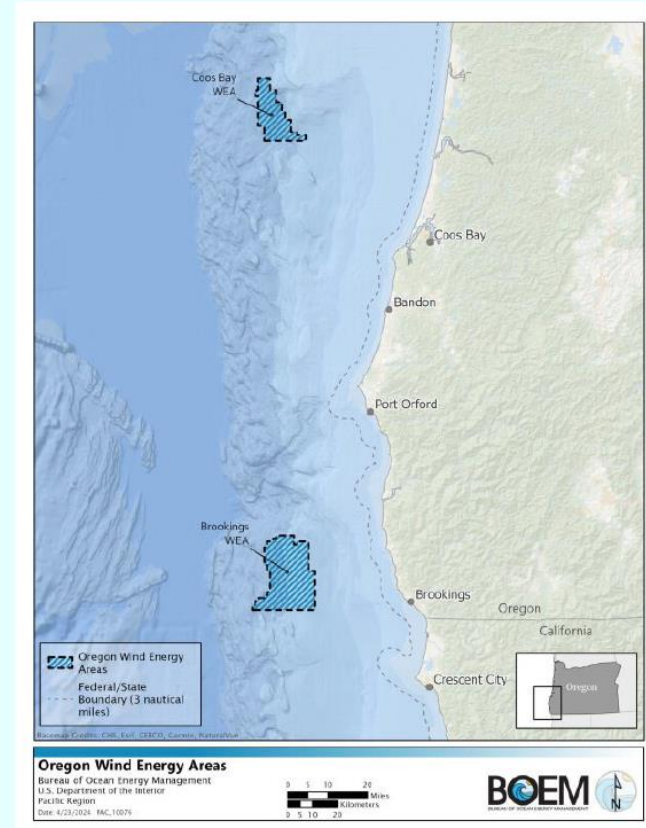
Guide to Sections of the Environmental Assessment

40 CFR 1501.5 (c)

In the EA...	You can find...
Chapter 1	Introduction to the project (Purpose and Need)
Chapter 2	Description of the proposed action and alternatives
Chapter 3	Description of the affected environment and environmental impacts
Chapter 4	Description of consultation and public involvement
Appendices A-F	Other sources, Current and Reasonably Foreseeable Planned Actions, Supplemental Ports/Fisheries/Military Information, Best Management Practices, Survey Technical Specifications

Draft Environmental Assessment

Commercial Wind Lease Issuance on the Pacific Outer Continental Shelf Offshore, Oregon



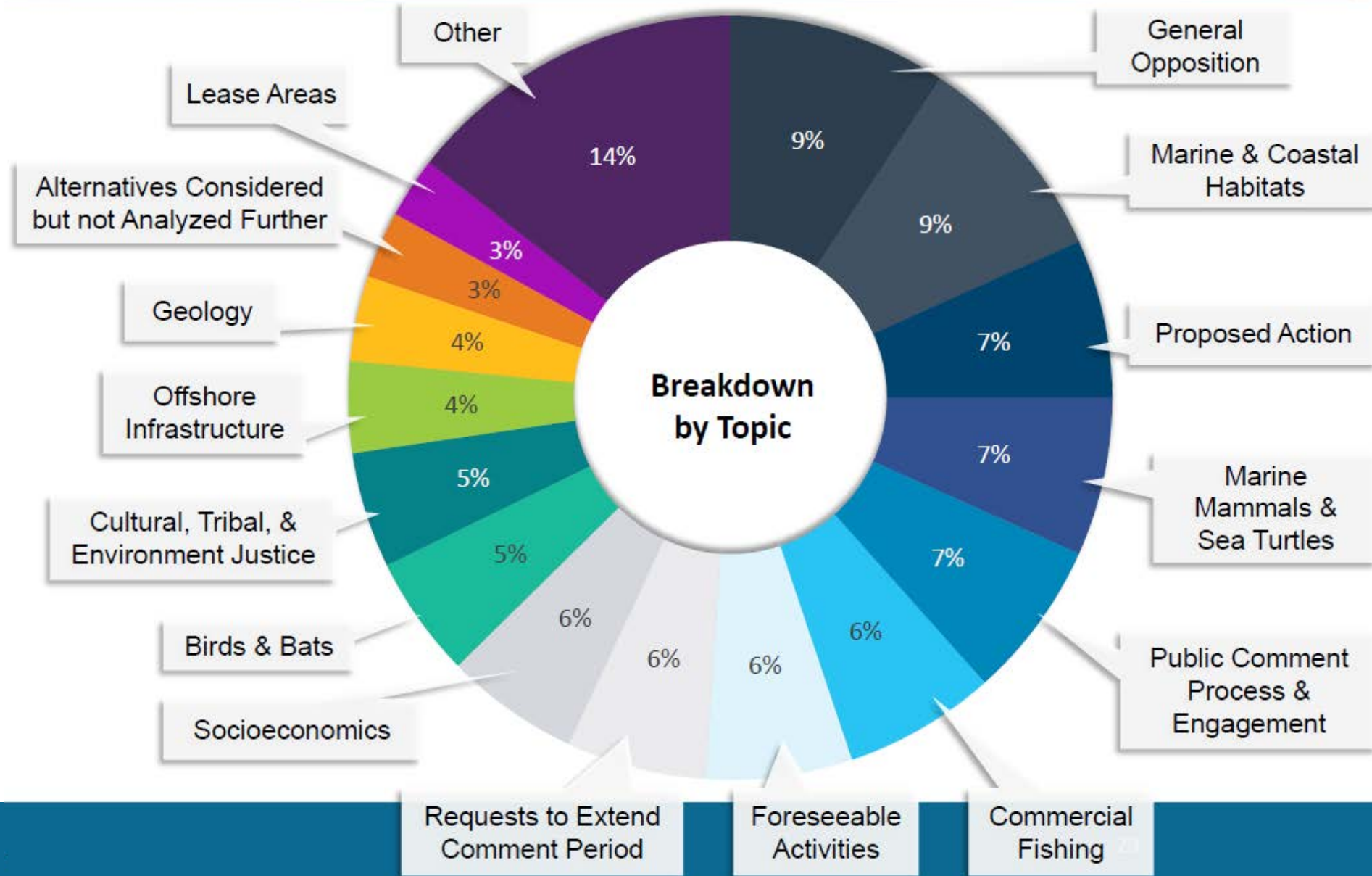
April 2024

BOEM U.S. Department of the Interior
Bureau of Ocean Energy Management
Pacific Region

OCS EIS/EA
BOEM 2024-018

Public Comments from Scoping

- 127 submissions received - Broken into 388 sub-comments and categorized by topic
- Public comments are available at [regulations.gov](https://www.regulations.gov), docket "BOEM-2023-0065"



Resource Assessment

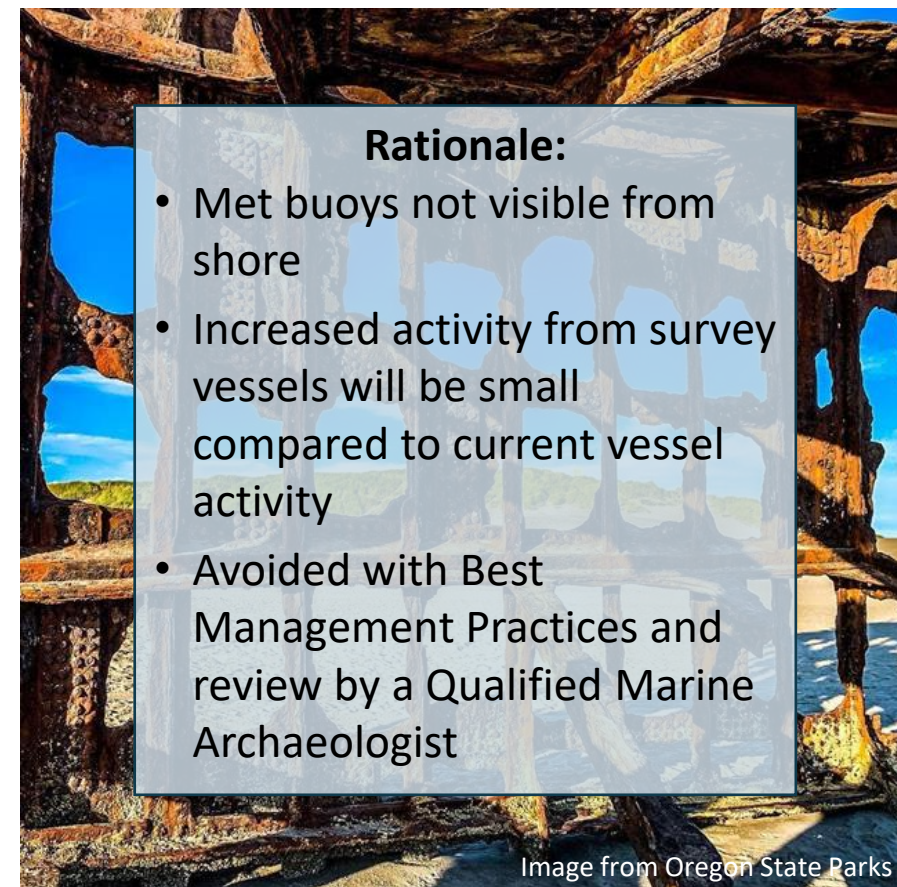
Each resource is presented in the EA according to its **affected environment** and **potential impacts** to the affected environment that could occur as a result of **leasing, site assessment**, and **site characterization**.



- Geology
- Air Quality
- Marine and Coastal Habitats and Associated Biotic Assemblages
- Marine Mammals and Sea Turtles
- Coastal and Marine Birds
- Socioeconomics
- Commercial Fishing
- Recreation and Tourism
- Environmental Justice
- Tribes and Tribal Resources
- Historic Properties
- Cumulative Impacts

Selected Resource: Cultural Resources

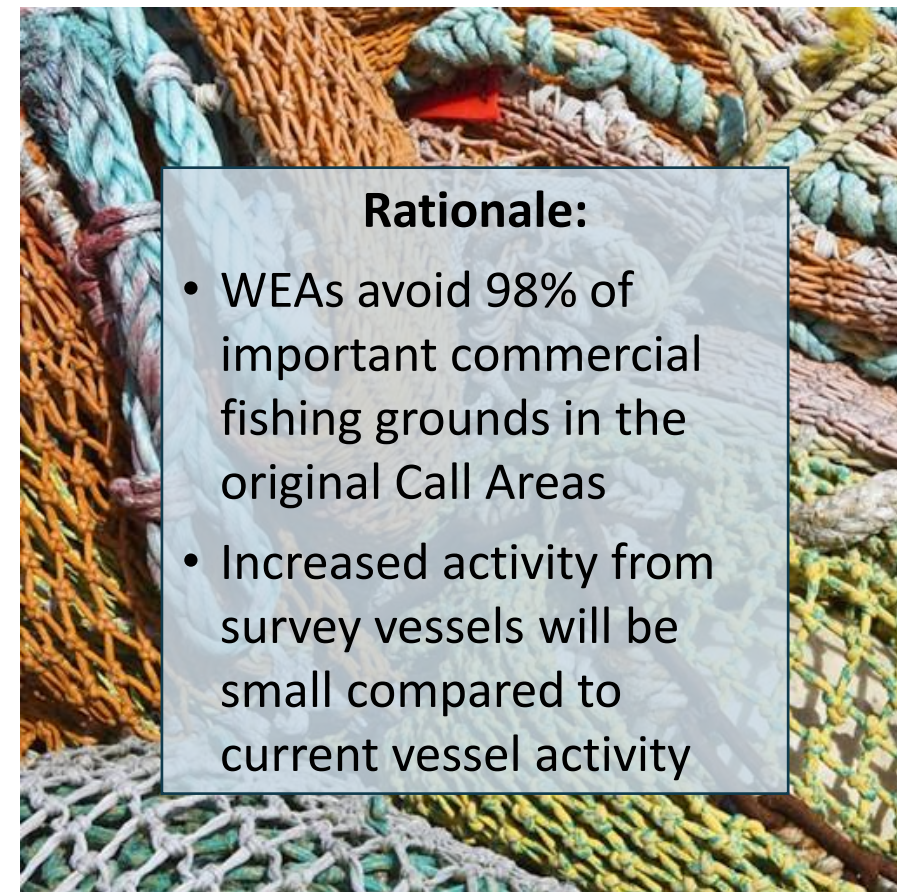
Affected Environment	<ul style="list-style-type: none">• Recreation and tourism• Environmental Justice• Historic Properties
Potential Impacts	<ul style="list-style-type: none">• Increased maritime traffic• Air and water pollutant releases• Altered viewshed
Estimated Level	<ul style="list-style-type: none">• Negligible to minimal impact to tourism, recreation, and environmental justice• No impacts to submerged archaeological sites



See Sections 3.8, 3.9, 3.11 for more information

Selected Resource: Commercial Fishing

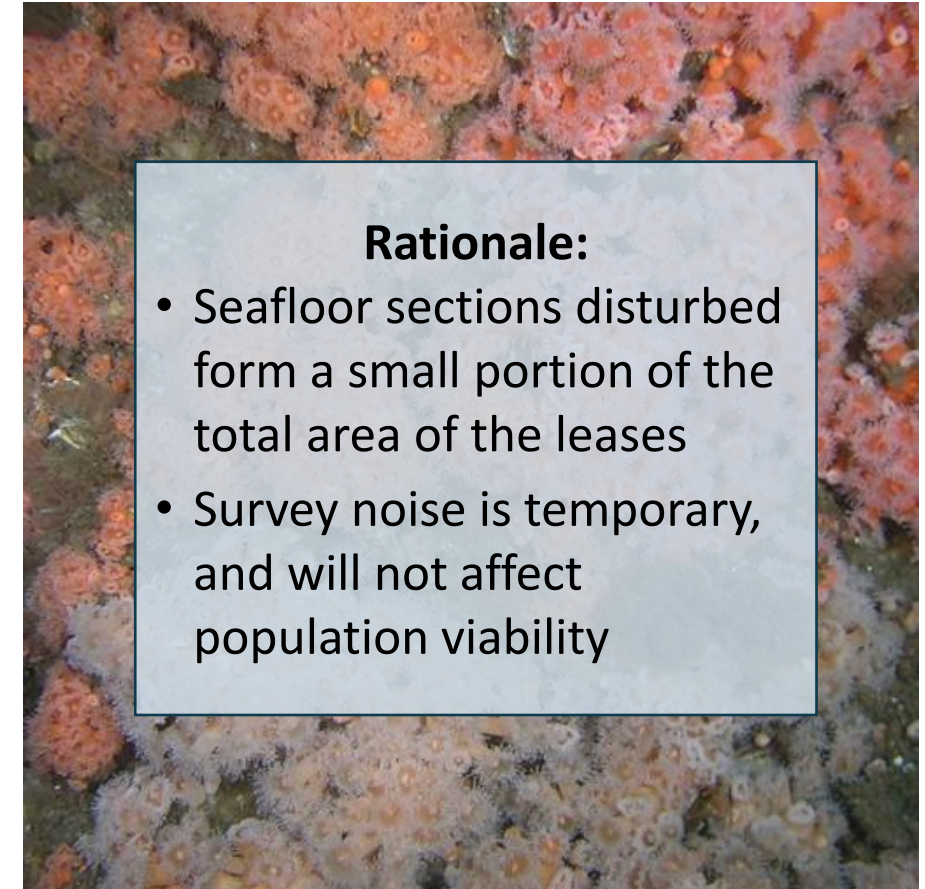
Affected Environment	<ul style="list-style-type: none">• Newport (Yaquina), Coos Bay, and Brookings, lease and transit areas
Potential Impacts	<ul style="list-style-type: none">• Space-use conflict• Reduced fishing efficiency• Entanglement with data buoys
Estimated Level	<ul style="list-style-type: none">• Minimal to low, but some fisheries may be disproportionately affected



See [Section 3.7](#) for more information

Selected Resource: Marine & Coastal Habitat and Associated Biotic Assemblages

Affected Environment	<ul style="list-style-type: none">• Benthic Habitat• Pelagic Environments• Intertidal & Coastal Habitats• Threatened & Endangered Species
Potential Impacts	<ul style="list-style-type: none">• Seafloor disturbance• Noise from HRG surveys• Artificial reef effect• Preclusion of fishing
Estimated Level	<ul style="list-style-type: none">• Minimal and temporary negative effects from noise and disturbance• Temporary environmental benefit to fish from artificial reef effect and preclusion of fishing



See **Section 3.3** for more information

Outlook and Next Steps

NEPA process:

Finalize Oregon Wind Leasing Environmental Assessment (July/August 2024)

Non-NEPA processes:

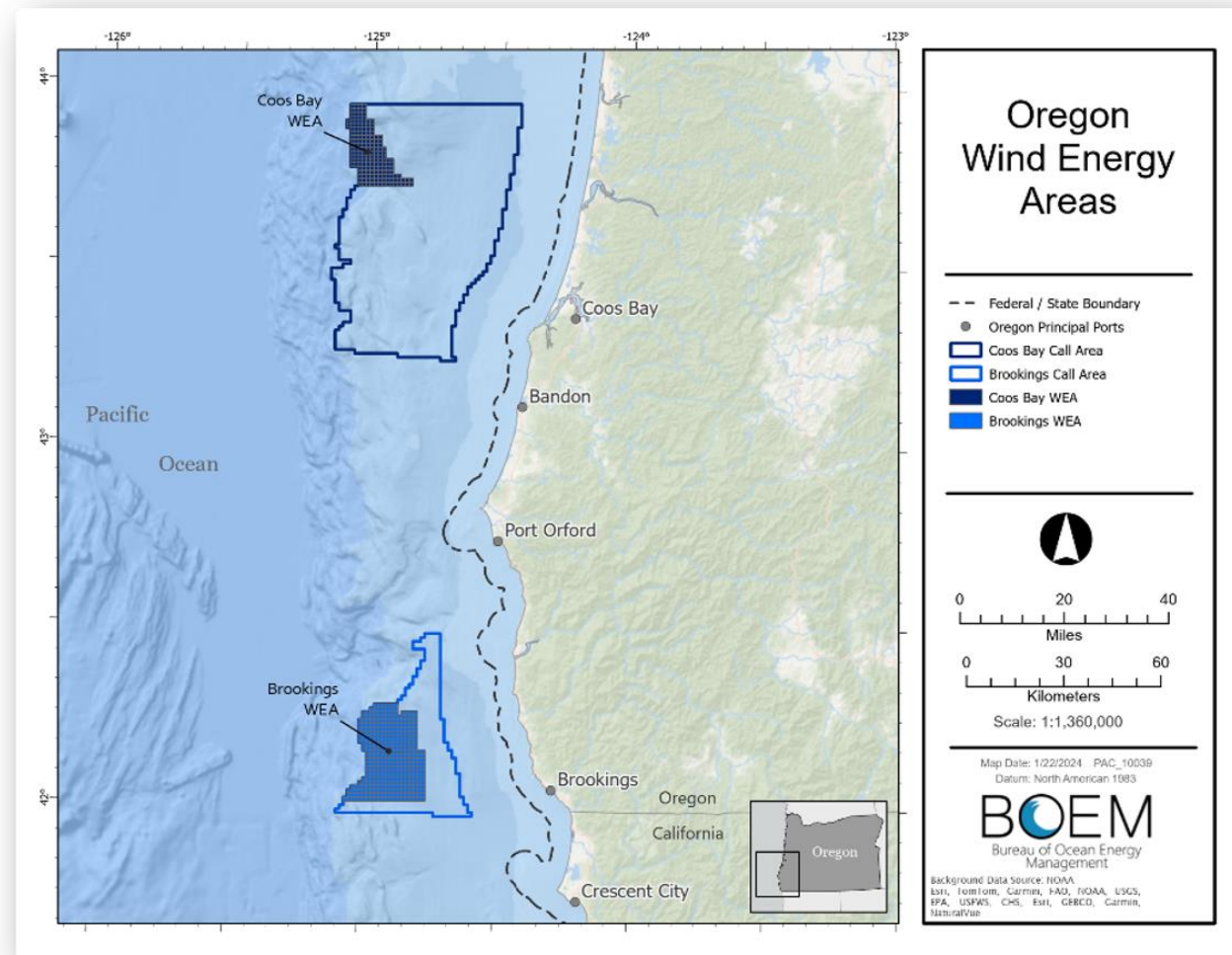
Proposed Sale Notice

- Brookings and Coos Bay Lease Areas are combined in one Proposed Sale Notice for a single Oregon auction
- 60-day comment period ends July 1, 2024

Final Sale Notice

- September 2024

Lease Auction – October 2024



Clarifying Questions- Environmental Review Process

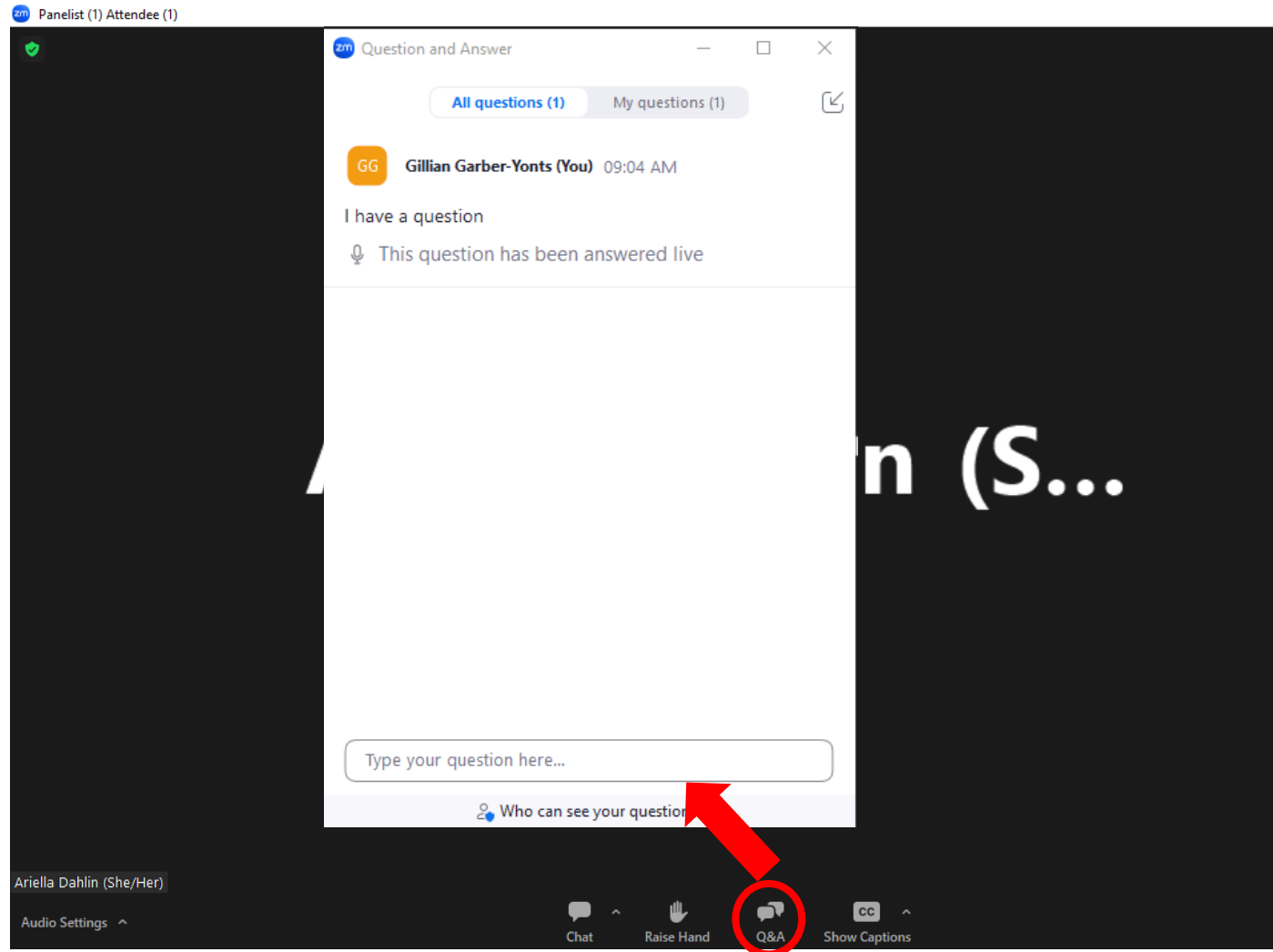
Questions- Environmental Review Process

- The Q&A chat feature will be open for questions **related to the NEPA process**.
- BOEM will respond to questions relating to the NEPA process. All other questions will be noted by BOEM.
- Questions can be entered into the Q & A chat feature.

Public comment will be received immediately following questions relating to environmental assessment process

Clarifying Questions on the Draft EA Process

- We will look at the questions received in the Q&A pod and answer questions.
- Note that any questions during this clarifying Q&A are not official public record.
- Q&A is focused on the Draft EA.
- For technical difficulties, please email adahlin@kearnswest.com



Break

Please return at 5:10 pm PT

Public Comment Opportunity

Public Comments Requested

Key element of NEPA

Environmental analysis guided by local expertise and perspectives = more informed decisions



Types of information BOEM is looking for:

- Potentially Significant **issues** to be analyzed in the EA
- **Sources** of information to include in the EA
- Data **gaps** and information needs

How to Comment



Public Comment Period Open Until June 14, 2024 **8:59 PM Pacific** / 11:59 PM Eastern



Public Meeting: Today!

Court Reporter in attendance to capture verbal comments.



In writing to:

OREGON EA, Chief, Environmental Analysis Section, Office of Environment, Bureau of Ocean Energy Management, 760 Paseo Camarillo, Suite 102, Camarillo, California 93010



Online at www.regulations.gov: Search for Docket No. BOEM-2023-0065

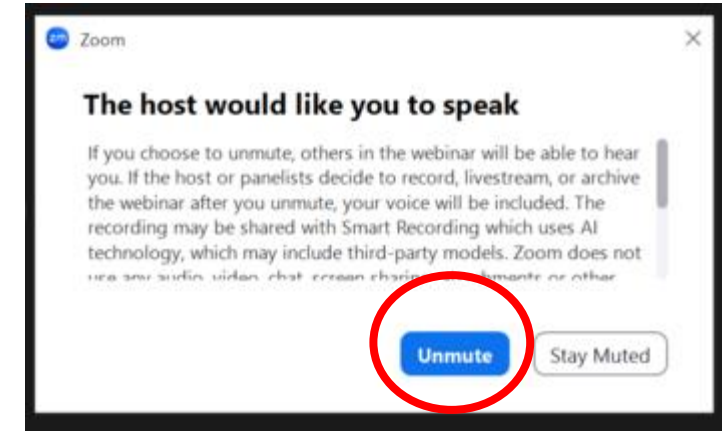
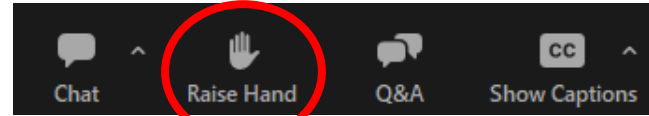
Click on the “Comment” button. Enter your information and comment, then click “Submit Comment.”



Comments submitted through traditional mail will be entered into the official docket on Regulations.gov

Verbal Public Comment Opportunity for the Draft EA

- Raise your hand to join the queue.
- The facilitator will call on you when it is your turn to speak.
- You will then be unmuted.
 - If you are a phone call-in user, dial *9 on your phone to raise hand
 - If unable to speak, use the Q&A pod or email adahlin@kearnswest.com for technical assistance.
 - Public comment will not be accepted through the Q&A pod.
- Provide your full name and affiliation before you speak for the court reporter.
- When providing comments, please:
 - Respect time limits as assigned.
 - Use respectful language.



To provide written comment, visit [regulations.gov](https://www.regulations.gov), docket number BOEM-2023-0065. BOEM will accept comments through 8:59 pm PT on June 14, 2024.

Closing and Next Steps

Lisa Gilbane

Chief of Pacific Environmental Analysis Section



BOEM.gov



Linette Makua | NEPA Coordinator | linette.makua@boem.gov

The meeting has adjourned: How to Comment



Public Comment Period Open Until June 14, 2024 **8:59 PM Pacific** / 11:59 PM Eastern

For more information visit www.boem.gov/oregonea



In writing to:

OREGON EA, Chief, Environmental Analysis Section, Office of Environment, Bureau of Ocean Energy Management, 760 Paseo Camarillo, Suite 102, Camarillo, California 93010



Online at www.regulations.gov: Search for Docket No. BOEM-2023-0065

Click on the “Comment” button. Enter your information and comment, then click “Submit Comment.”

Preferred

Comments submitted through traditional mail will be entered into the official docket on Regulations.gov