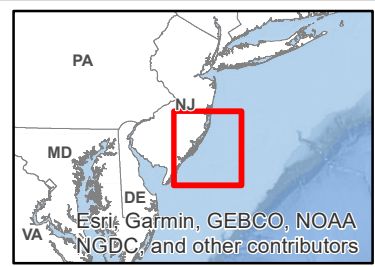


Esri, Garmin, GEBCO, NOAA NGDC, and other contributors

- Ocean Wind Proposed Project Area
- ▲ Onshore Interconnection Point
- Wind Turbine
- Onshore Export Cable Route Options
- Inshore Export Cable Route Corridor
- Offshore Export Cable Route Corridor
- Indicative Array Cable Layout
- Potential Onshore Substation Parcel
- Inshore Study Area
- Offshore Export Cable Route Study Area
- Ocean Wind Lease Area (OCS-A 0498)
- Other BOEM Lease Areas
- State Seaward Boundary
- ⊙ Offshore Substation



Esri, Garmin, GEBCO, NOAA NGDC, and other contributors

Source: Ocean Wind 2021.