

# V22. Stone Harbor Beach Access (Day)

Stone Harbor, Cape May County

## LANDSCAPE INFORMATION

**Field Identification Number.** 59

**Context Image Dates.** 14 August 2018

**Site Map Aerial Date.** 26 July 2018

**Physiographic Area.** Shoreline

**Landscape Similarity Zone (LSZ).** Beachfront

**Scenic Resources.** Viewpoint from a public beach conservation area. Viewpoint is near Stone Harbor Downtown Commercial Block (identified historic district - no official NRHP eligibility designation).

## SITE MAP



## CONTEXT IMAGES



1. View looking southeast from the end of 95th Street toward Stone Harbor Beach Patrol, and public beach access.



2. View looking east toward gazebo on 95th Street beach access dune viewing platform.



3. View looking northwest toward 95th Street from 95th Street beach access dune viewing platform.



4. View looking southeast from 95th Street beach access dune viewing platform.



5. View looking southwest from visualization location on the 95th Street beach access ramp.

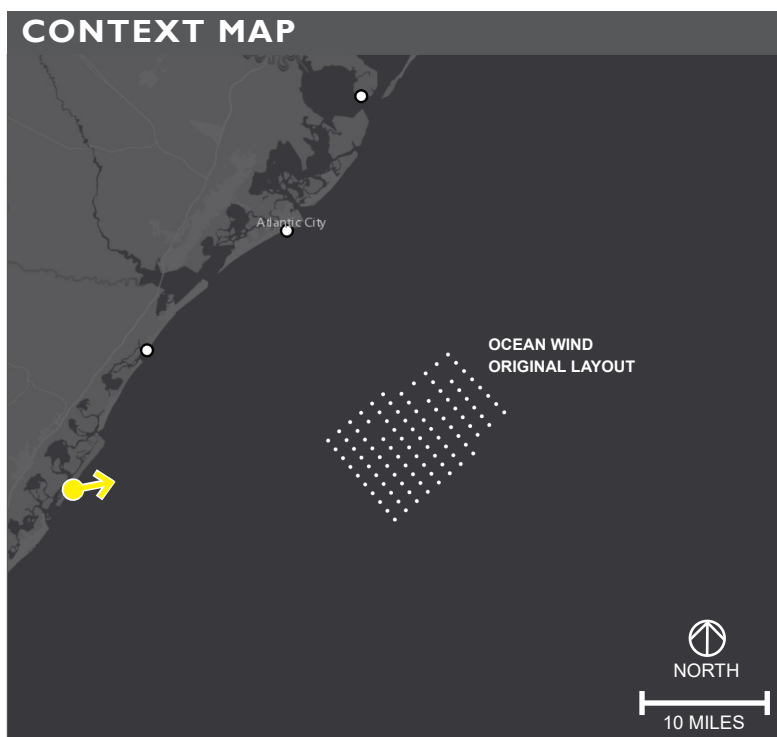
# V22. Stone Harbor Beach Access (Day)

Stone Harbor, Cape May County

PANORAMIC VISUALIZATION



EXTENT OF NORMAL VIEW



ALTERNATIVES ANALYSIS

**Original Layout:** Turbine layout submitted in COP.

**Turbine Dimensions:** 906 ft blade tip height, 512 ft hub height, 788 ft rotor diameter.

TURBINE DIMENSIONS

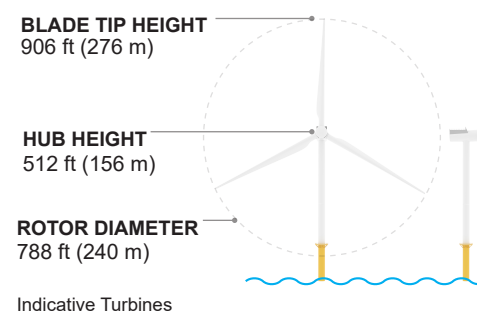


IMAGE DATA

LOCATION	
Date	14 August 2018
Time	4:22 PM
Latitude	39.052389°
Longitude	-74.754855°
Direction of View	East
LSZ	Beachfront

ENVIRONMENTAL	
Temperature (°F)	83°
Humidity	63%
Visibility	10 mi
Wind Direction	W
Wind Speed	14 mph
Weather Conditions	Partly Cloudy

PHOTO	
Field ID	59
Camera	NIKON D750
Resolution	300 dpi
Focal Length	50mm
Viewer Eye Elevation	13'

PROJECT VIEW	
Distance to Project	20.93 miles
Project Horizontal Field of View (HFOV)	25°

PROJECT INFRASTRUCTURE	
Number of Turbines	99
Number of offshore Substations	3

**V22**

---

**Stone Harbor Beach Access (Day)**  
Stone Harbor, Cape May County

---

**OCEAN WIND**

---

tjd&a | Landscape Architects & Planners

---

1 December 2021 Page 2/10

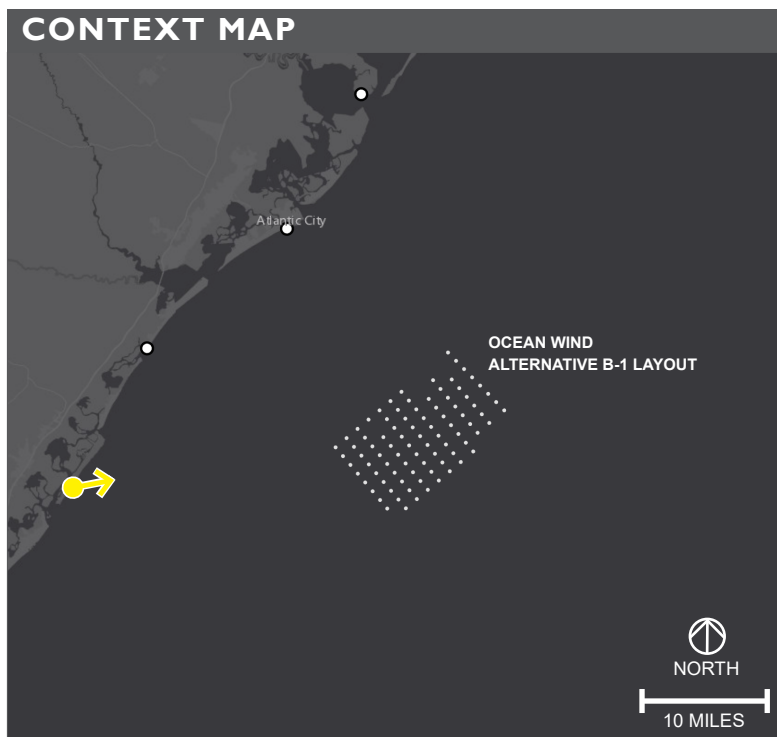
# V22. Stone Harbor Beach Access (Day)

Stone Harbor, Cape May County

PANORAMIC VISUALIZATION



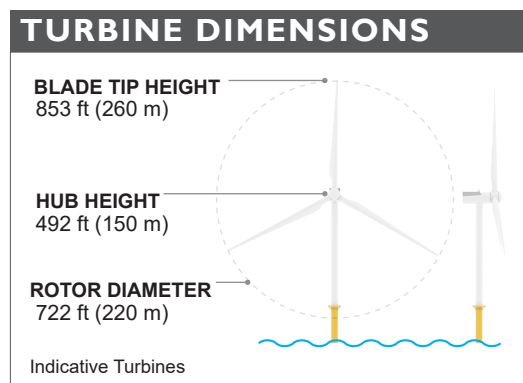
EXTENT OF NORMAL VIEW



**ALTERNATIVES ANALYSIS**

**Alternative B-1:** Exclusion of up to nine turbine positions in the first two shoreward strings of turbines that includes F01 to K01 and B02 to D02.

**Turbine dimensions:** 853 ft blade tip height, 492 ft hub height, 722 ft rotor diameter.



**IMAGE DATA**

LOCATION		ENVIRONMENTAL	
Date	14 August 2018	Temperature (°F)	83°
Time	4:22 PM	Humidity	63%
Latitude	39.052389°	Visibility	10 mi
Longitude	-74.754855°	Wind Direction	W
Direction of View	East	Wind Speed	14 mph
LSZ	Beachfront	Weather Conditions	Partly Cloudy
PHOTO		PROJECT VIEW	
Field ID	59	Distance to Project	21.4 miles
Camera	NIKON D750	Project Horizontal Field of View (HFOV)	24°
Resolution	300 dpi		
Focal Length	50mm		
Viewer Eye Elevation	13'		
PROJECT INFRASTRUCTURE			
Number of Turbines	89		
Number of offshore Substations	3		

**V22**

**Stone Harbor Beach Access (Day)**

Stone Harbor, Cape May County

---

**OCEAN WIND**

---

tjd&a | Landscape Architects & Planners

1 December 2021 Page 3/10

# V22. Stone Harbor Beach Access (Day)

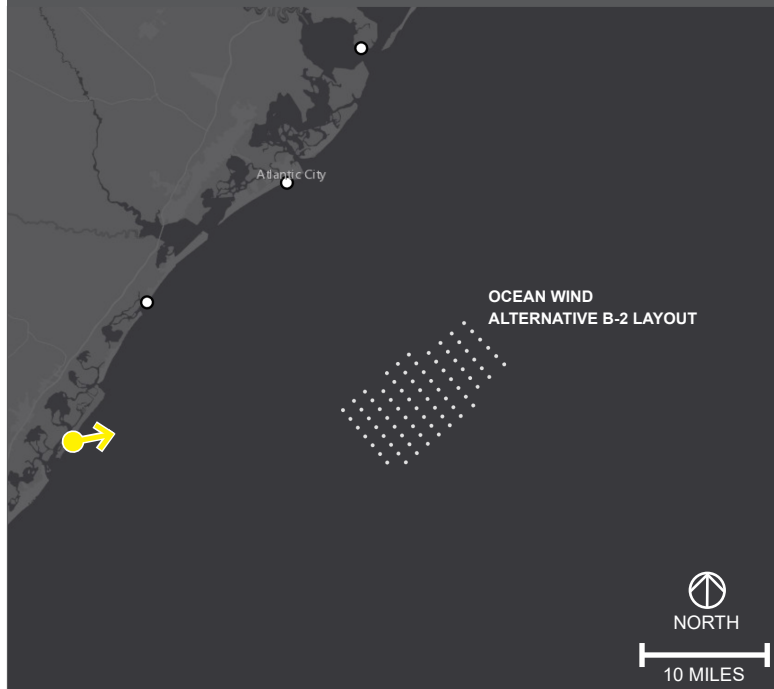
Stone Harbor, Cape May County

PANORAMIC VISUALIZATION



EXTENT OF NORMAL VIEW

CONTEXT MAP



ALTERNATIVES ANALYSIS

**Alternative B-2:** Exclusion of up to 19 turbine positions in the first three shoreward strings of turbines that includes F01 to K01, A02 to K02, A03 and C03.

**Turbine Dimensions:** 906 ft blade tip height, 512 ft hub height, 788 ft rotor diameter.

TURBINE DIMENSIONS

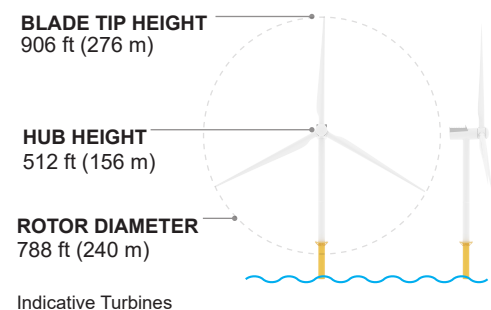


IMAGE DATA

LOCATION

Date	14 August 2018
Time	4:22 PM
Latitude	39.052389°
Longitude	-74.754855°
Direction of View	East
LSZ	Beachfront

ENVIRONMENTAL

Temperature (°F)	83°
Humidity	63%
Visibility	10 mi
Wind Direction	W
Wind Speed	14 mph
Weather Conditions	Partly Cloudy

PHOTO

Field ID	59
Camera	NIKON D750
Resolution	300 dpi
Focal Length	50mm
Viewer Eye Elevation	13'

PROJECT VIEW

Distance to Project	21.89 miles
Project Horizontal Field of View (HFOV)	21°

PROJECT INFRASTRUCTURE

Number of Turbines	79
Number of offshore Substations	3

V22

**Stone Harbor Beach Access (Day)**

Stone Harbor, Cape May County

**OCEAN WIND**

tjd&a | Landscape Architects & Planners

# V22. Stone Harbor Beach Access (Day)

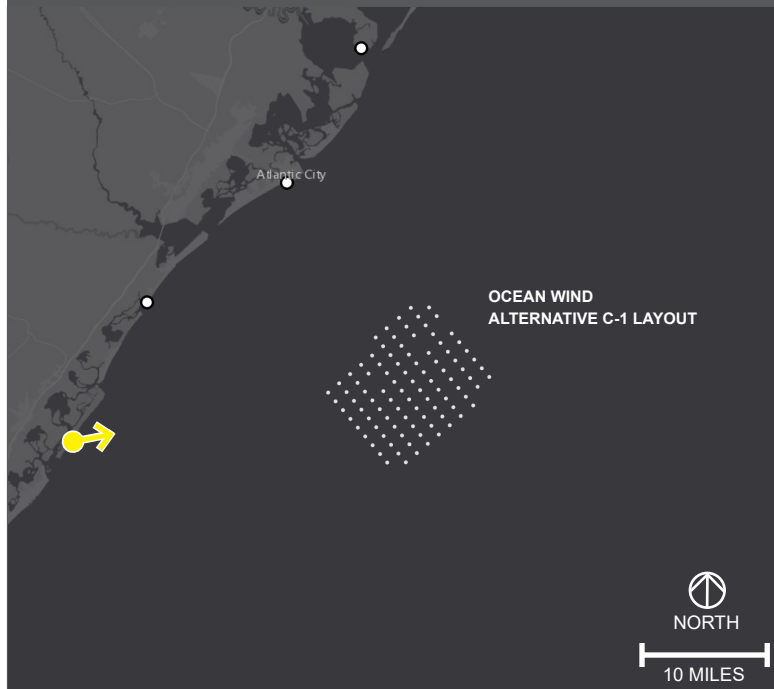
Stone Harbor, Cape May County

PANORAMIC VISUALIZATION



EXTENT OF NORMAL VIEW

CONTEXT MAP



ALTERNATIVES ANALYSIS

**Alternative C-1:** Exclusion of eight turbine positions (A02 to A09), relocation of eight turbine positions to the northern portion of the Ocean Wind Lease Area (C00 to F00 and B01 to E01).

**Turbine Dimensions:** 906 ft blade tip height, 512 ft hub height, 788 ft rotor diameter.

TURBINE DIMENSIONS

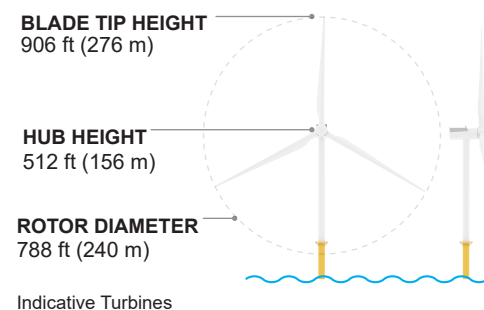


IMAGE DATA

LOCATION

Date	14 August 2018
Time	4:22 PM
Latitude	39.052389°
Longitude	-74.754855°
Direction of View	East
LSZ	Beachfront

ENVIRONMENTAL

Temperature (°F)	83°
Humidity	63%
Visibility	10 mi
Wind Direction	W
Wind Speed	14 mph
Weather Conditions	Partly Cloudy

PHOTO

Field ID	59
Camera	NIKON D750
Resolution	300 dpi
Focal Length	50mm
Viewer Eye Elevation	13'

PROJECT VIEW

Distance to Project	20.93 miles
Project Horizontal Field of View (HFOV)	25°

PROJECT INFRASTRUCTURE

Number of Turbines	98
Number of offshore Substations	3

V22

**Stone Harbor Beach Access (Day)**

Stone Harbor, Cape May County

**OCEAN WIND**

tjd&a | Landscape Architects & Planners

# V22. Stone Harbor Beach Access (Day)

Stone Harbor, Cape May County

EXISTING CONDITIONS



**NORMAL VIEW  
EXISTING IMAGE**

**V22**

**Stone Harbor  
Beach Access  
(Day)**

**Stone Harbor,  
Cape May County**

**VIEW NOTE**

When printed on 11x17 inch paper, viewer should hold this image approximately 21 inches from eye to replicate actual view.

**OCEAN WIND**

**tjd&a**

# V22. Stone Harbor Beach Access (Day)

Stone Harbor, Cape May County

ORIGINAL LAYOUT VISUALIZATION



**NORMAL VIEW  
VISUALIZATION**

**V22**

**Stone Harbor  
Beach Access  
(Day)**

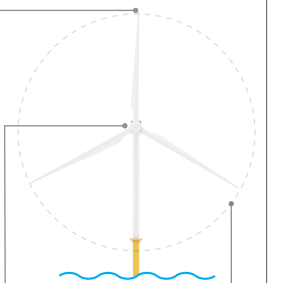
**Stone Harbor,  
Cape May County**

**ORIGINAL  
VISUALIZATION**

**VIEW NOTE**

When printed on 11x17 inch paper, viewer should hold this image approximately 21 inches from eye to replicate actual view.

**TURBINE DIMENSIONS**



**HUB HEIGHT**  
512 ft (156 m)

**BLADE TIP HEIGHT**  
906 ft (276 m)

**ROTOR DIAMETER**  
788 ft (240 m)

**OCEAN WIND**

**tjd&a**

# V22. Stone Harbor Beach Access (Day)

Stone Harbor, Cape May County

ALTERNATIVE B-1 VISUALIZATION



**NORMAL VIEW  
VISUALIZATION**

**V22**

**Stone Harbor  
Beach Access  
(Day)**

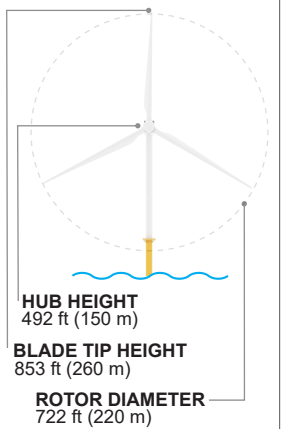
**Stone Harbor,  
Cape May County**

**ALTERNATIVE B-1  
VISUALIZATION**

**VIEW NOTE**

When printed on 11x17 inch paper, viewer should hold this image approximately 21 inches from eye to replicate actual view.

**TURBINE DIMENSIONS**



**OCEAN WIND**

**tjd&a**



# V22. Stone Harbor Beach Access (Day)

Stone Harbor, Cape May County

ALTERNATIVE B-2 VISUALIZATION



**NORMAL VIEW  
VISUALIZATION**

**V22**

**Stone Harbor  
Beach Access  
(Day)**

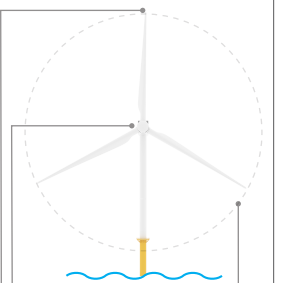
**Stone Harbor,  
Cape May County**

**ALTERNATIVE B-2  
VISUALIZATION**

**VIEW NOTE**

When printed on 11x17 inch paper, viewer should hold this image approximately 21 inches from eye to replicate actual view.

**TURBINE DIMENSIONS**



**HUB HEIGHT**  
512 ft (156 m)

**BLADE TIP HEIGHT**  
906 ft (276 m)

**ROTOR DIAMETER**  
788 ft (240 m)

**OCEAN WIND**

**tjd&a**

# V22. Stone Harbor Beach Access (Day)

Stone Harbor, Cape May County

ALTERNATIVE C-1 VISUALIZATION



**NORMAL VIEW  
VISUALIZATION**

**V22**

**Stone Harbor  
Beach Access  
(Day)**

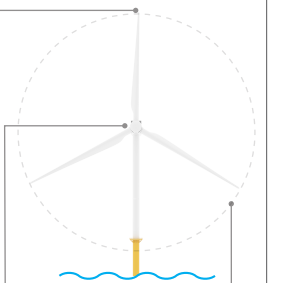
**Stone Harbor,  
Cape May County**

**ALTERNATIVE C-1  
VISUALIZATION**

**VIEW NOTE**

When printed on 11x17 inch paper, viewer should hold this image approximately 21 inches from eye to replicate actual view.

**TURBINE DIMENSIONS**



**HUB HEIGHT**  
512 ft (156 m)

**BLADE TIP HEIGHT**  
906 ft (276 m)

**ROTOR DIAMETER**  
788 ft (240 m)

**OCEAN WIND**

**tjd&a**