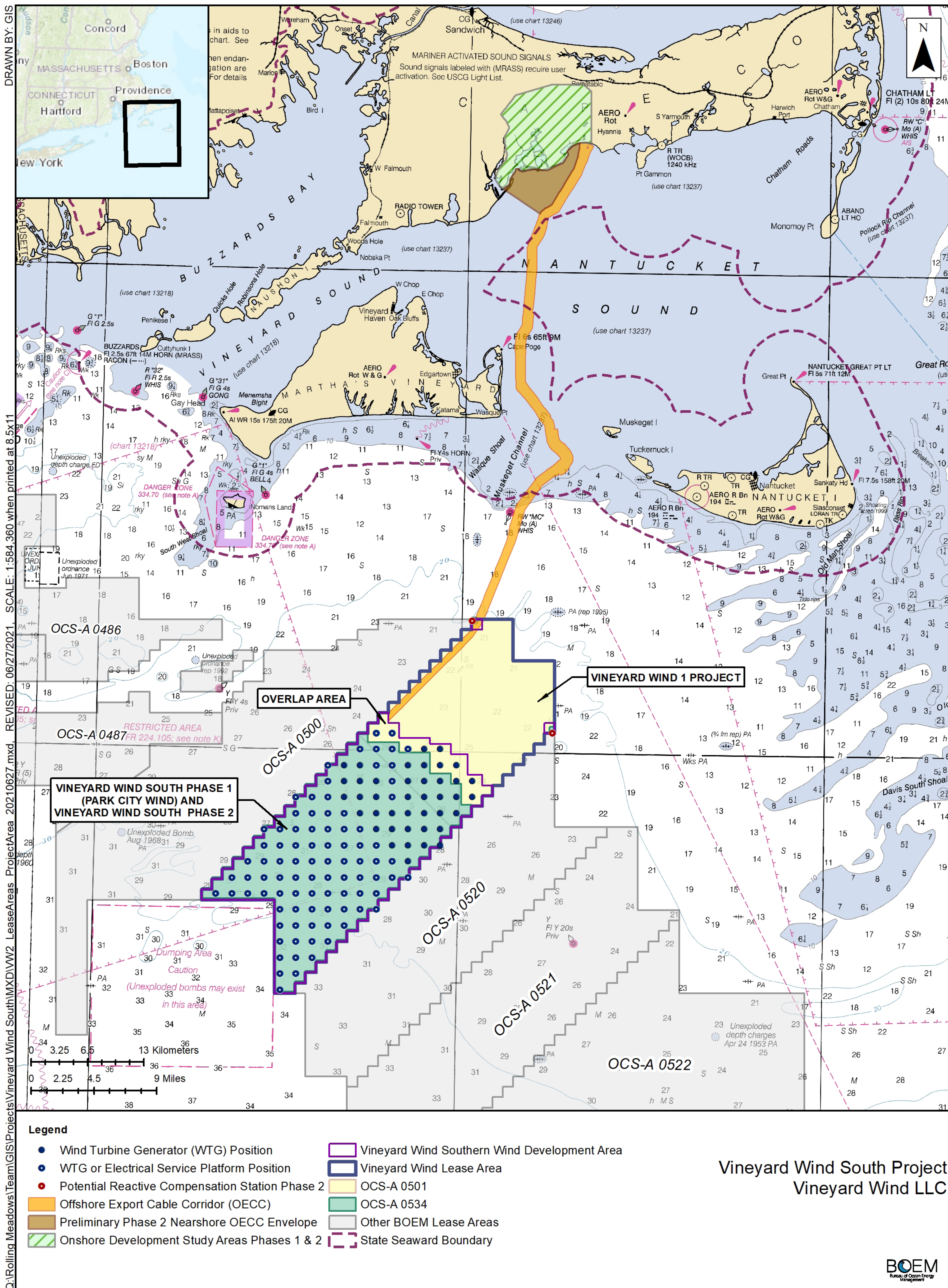




# Vineyard Wind South Project



DRAWN BY: GIS  
Q:\Rolling Meadows\Team\GIS\Projects\Vineyard Wind South\MXD\WV2\_LeaseAreas\_ProjectArea\_20210627.mxd, REVISED: 06/27/2021, SCALE: 1:584,360 when printed at 8.5x11

### Legend

- Wind Turbine Generator (WTG) Position
- WTG or Electrical Service Platform Position
- Potential Reactive Compensation Station Phase 2
- Offshore Export Cable Corridor (OECC)
- Preliminary Phase 2 Nearshore OECC Envelope
- Onshore Development Study Areas Phases 1 & 2
- Vineyard Wind Southern Wind Development Area
- Vineyard Wind Lease Area
- OCS-A 0501
- OCS-A 0534
- Other BOEM Lease Areas
- State Seaward Boundary

Vineyard Wind South Project  
Vineyard Wind LLC



NAD 1983 UTM Zone 19N



For more information on BOEM's Renewable Energy Program, visit [www.boem.gov/Renewable-Energy](http://www.boem.gov/Renewable-Energy)