

Montauk Point State Park

Viewpoint Information

County: Suffolk
Town: East Hampton
State: New York
Location: Long Island
Coordinates: 41.07208° N, 71.85901° W
Direction of View: East (86.0°)
Distance to Nearest Visible Turbine: 31.7 miles

Visual Resources

Landscape Similarity Zone: Maintained Recreation Area
User Group: Local Residents, Tourists/Vacationers, Fishing Community
Aesthetic Resource: Montauk Point State Park, National Register Historic Site, Scenic Area of Statewide Significance

Notes: Block Island Wind Farm visible from this location at a distance of 16.9 miles.

Environmental Data

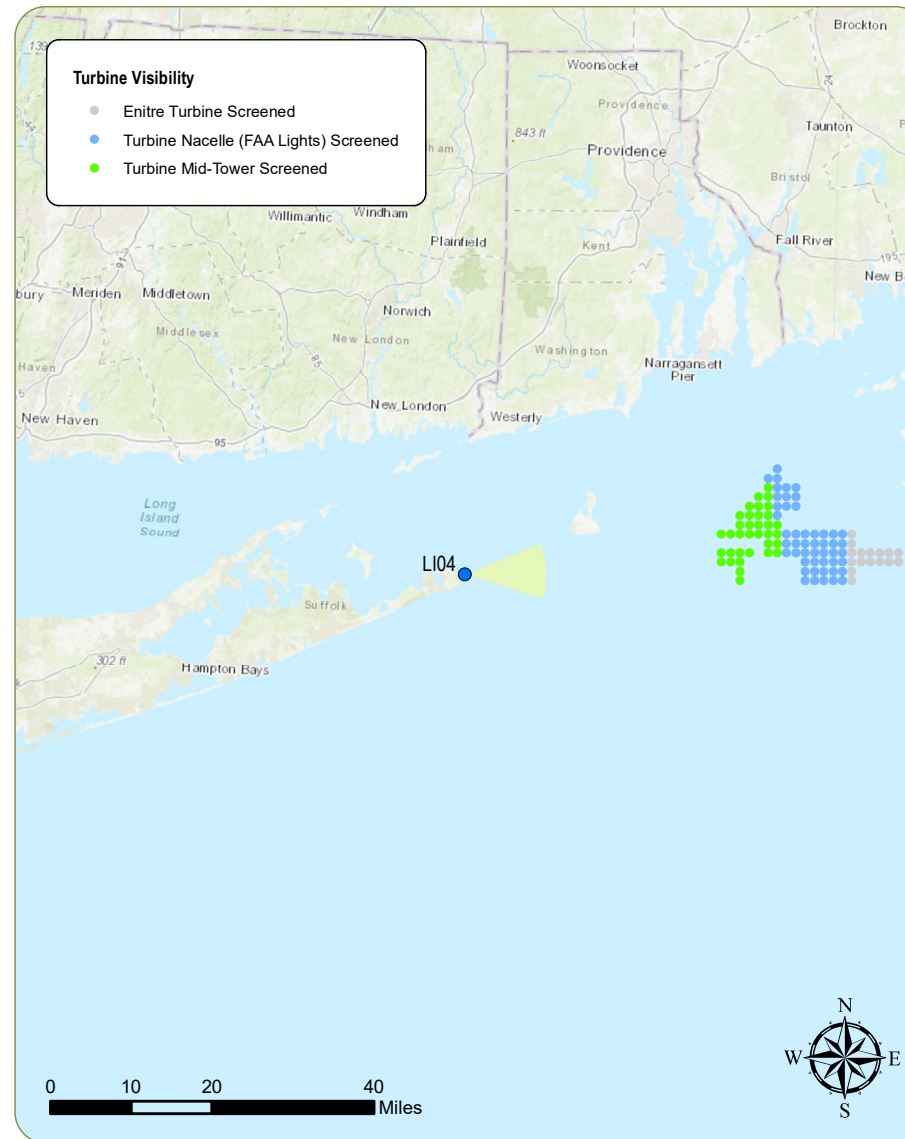
Date Taken: 9/11/2017
Time: 7:01 PM
Temperature: 62.6 °F
Humidity: 82%
Visibility: >10 miles
Wind Direction: Calm
Wind Speed: 0 mph
Conditions Observed: Clear

Camera Information

Camera: Canon EOS 5D Mark IV
Resolution: 30.4 Megapixels
Lens Focal Length: 50 mm
Camera Height: 48 feet AMSL

Viewing Instructions:

Printed at 100% the resulting simulation size is 15 inches wide by 10 inches high. At this size and focal length, the simulation should be viewed from a distance 21 inches.



Context Photo: View to the East-Northeast



Simulation Photo: View to the East



Context Photo: View to the Southeast



Context Photo: View to the South-Southeast

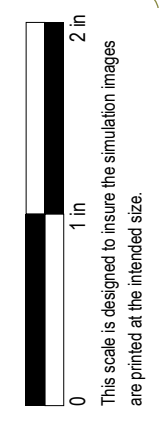
Revolution Wind Farm

Outer Continental Shelf, OCS-A 0486

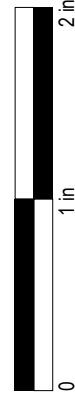
Viewpoint LI04: View from Montauk Point State Park, East Hampton

Appendix C: Sheet 56 of 153

Existing Conditions



Simulation



This scale is designed to insure the simulation images are printed at the intended size.

Montauk Point State Park

Viewpoint Information

County: Suffolk
Town: East Hampton
State: New York
Location: Long Island
Coordinates: 41.07208° N, 71.85901° W
Direction of View: East (86.0°)
Distance to Nearest Visible Turbine: 31.7 miles

Environmental Data

Date Taken: 9/11/2017
Time: 9:32 PM
Temperature: 54.7 °F
Humidity: 92%
Visibility: >10 miles
Wind Direction: Calm
Wind Speed: Calm
Conditions Observed: Clear

Visual Resources

Landscape Similarity Zone: Maintained Recreation Area
User Group: Local Residents, Tourists/Vacationers, Fishing Community
Aesthetic Resource: Montauk Point State Park, National Register Historic Site, Scenic Area of Statewide Significance

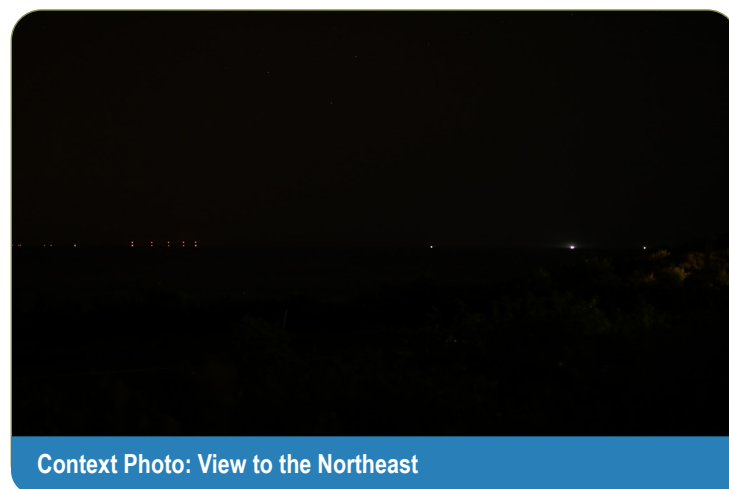
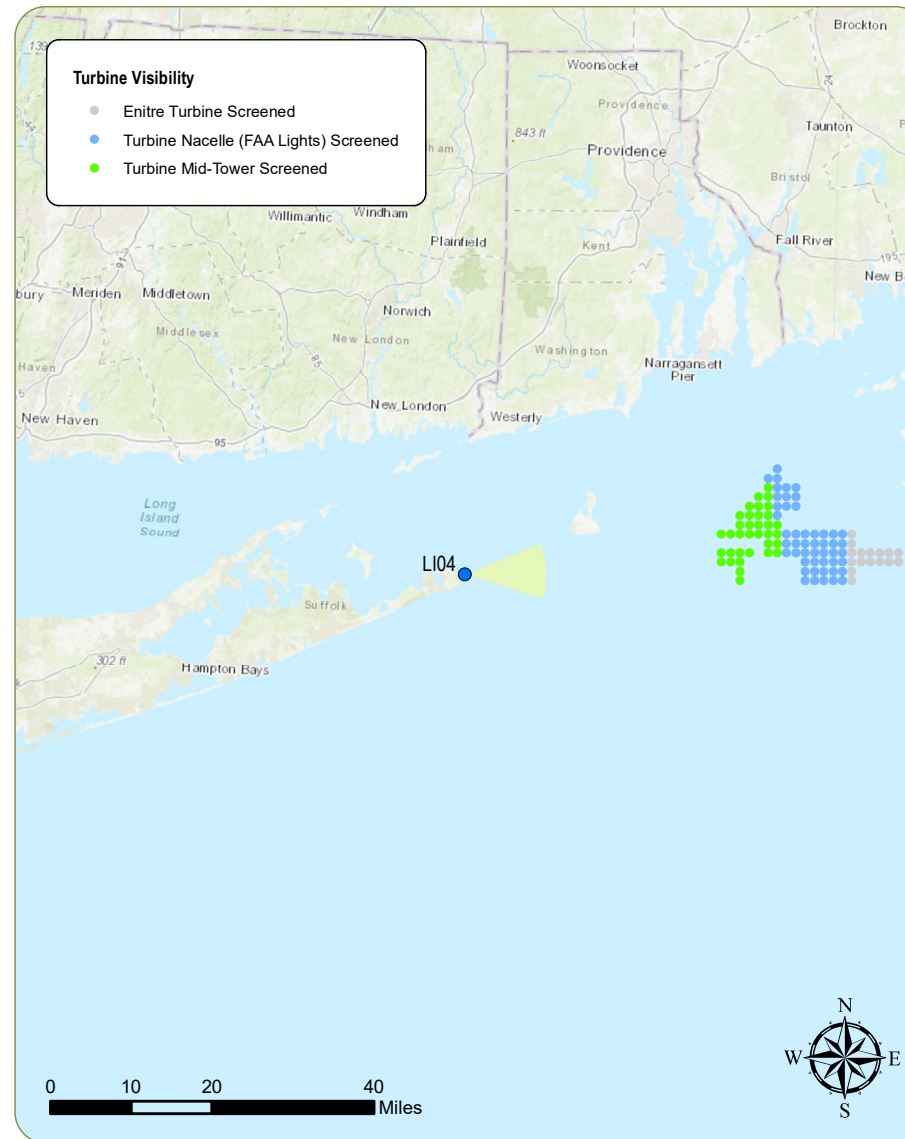
Notes: Block Island Wind Farm visible from this location at a distance of 16.9 miles.

Camera Information

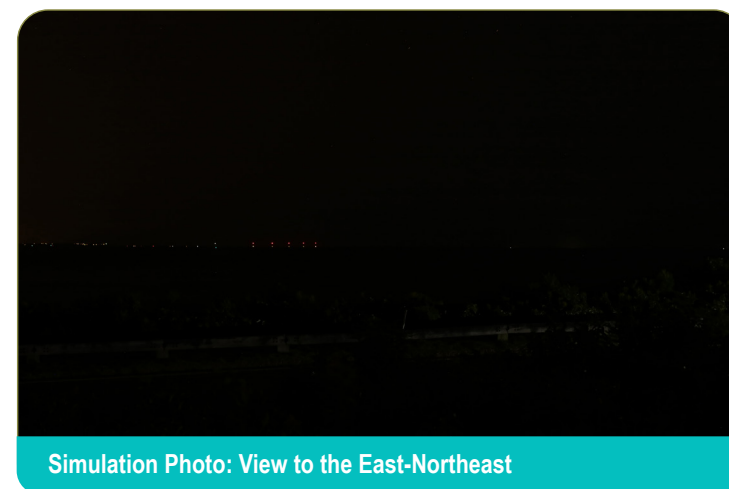
Camera: Canon EOS 5D Mark IV
Resolution: 30.4 Megapixels
Lens Focal Length: 50 mm
Camera Height: 48 feet AMSL

Viewing Instructions:

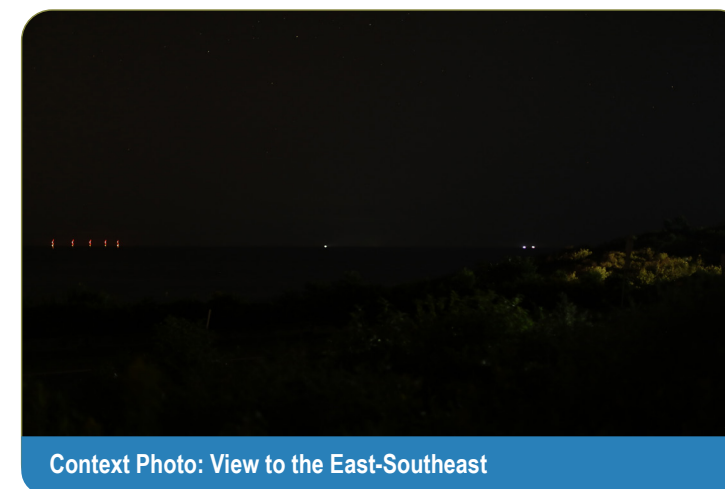
Printed at 100% the resulting simulation size is 15 inches wide by 10 inches high. At this size and focal length, the simulation should be viewed from a distance 21 inches.



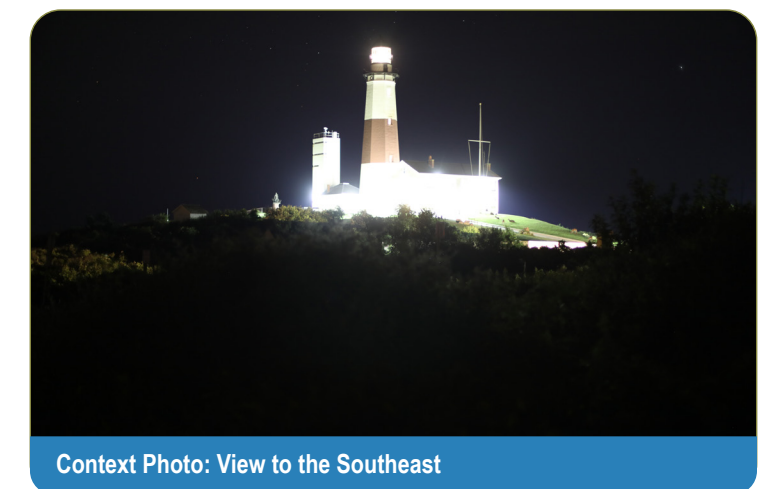
Context Photo: View to the Northeast



Simulation Photo: View to the East-Northeast



Context Photo: View to the East-Southeast



Context Photo: View to the Southeast

Revolution Wind Farm

Outer Continental Shelf, OCS-A 0486

Viewpoint LI04: Nighttime view from Montauk Point State Park, East Hampton

Appendix C: Sheet 59 of 153

Existing Conditions



This scale is designed to insure the simulation images are printed at the intended size.

Simulation



This scale is designed to insure the simulation images are printed at the intended size.