

**ALTERNATIVE D1 SIMULATION:  
1,116 MW OUTPUT; REMOVAL OF 7 WTG POSITIONS (LEAVES 93)**

**AQUINNAH OVERLOOK**

**VIEWPOINT INFORMATION**

**County:** Dukes  
**Town:** Aquinnah  
**State:** Massachusetts  
**Location:** Martha's Vineyard  
**Coordinates:** 41.34731° N, 70.83700° W  
**Direction of View:** South-Southwest (205.5°)  
**Distance to Nearest Visible Turbine:** 13.7 Miles

**VISUAL RESOURCES**

**Landscape Similarity Zone:** Coastal Bluff  
**Viewer Type:** Local Residents, Tourists/  
 Vacationers  
**Aesthetic Resource:** Gay Head Aquinnah  
 Shops Area State Historic Area, Gay Head West  
 Tisbury Unit State Scenic Area, Gay Head Cliffs  
 National Natural Landmark

**ENVIRONMENTAL DATA**

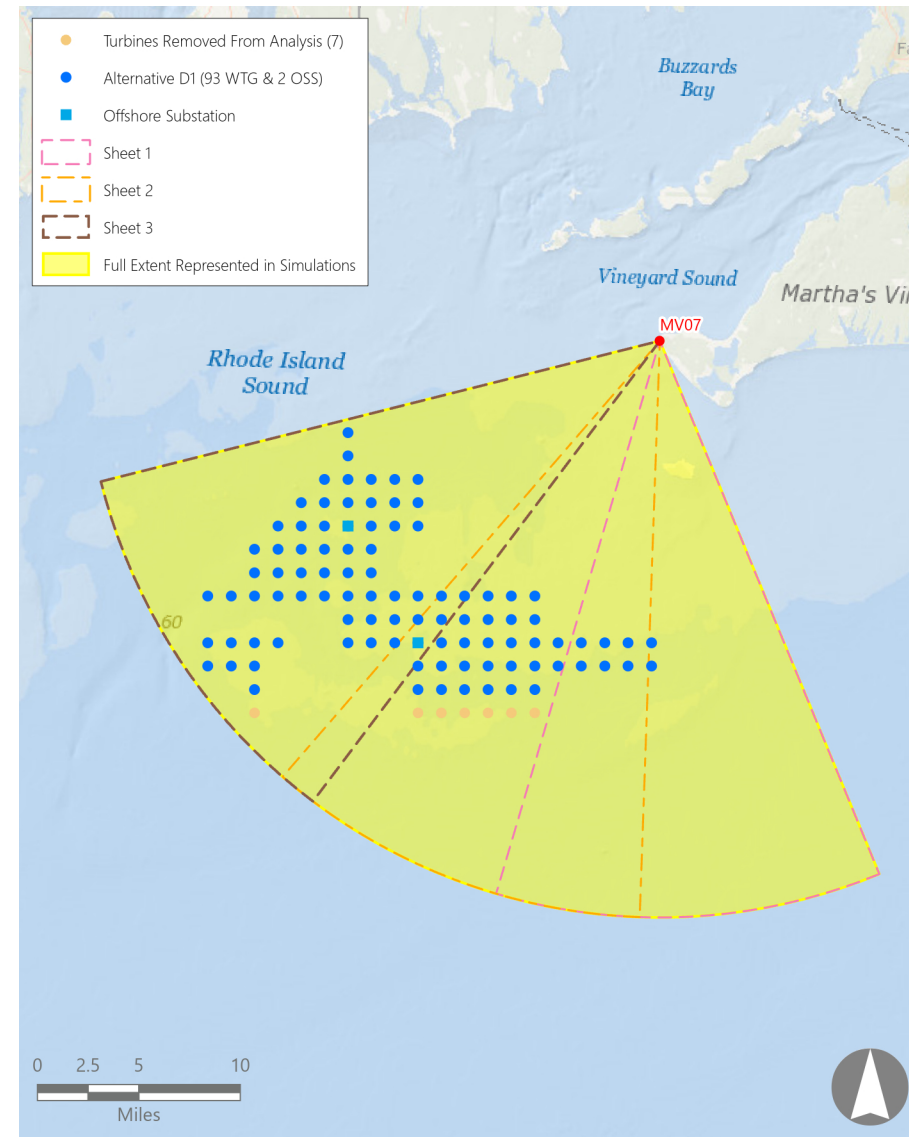
**Date Taken:** 8/4/2017 (11/25/2017)  
**Time:** 8:56 AM (3:58 PM)  
**Temperature:** 75°F (55.0°F)  
**Humidity:** 76%  
**Visibility:** >10 miles  
**Wind Direction:** South (Southwest)  
**Wind Speed:** 10.0 mph (12.0 mph)  
**Conditions Observed:** Partly Cloudy

**CAMERA INFORMATION**

**Camera:** Canon EOS 5D Mark IV  
**Resolution:** 30.4 Megapixels  
**Lens Focal Length:** 50 mm  
**Camera Height:** 145.5 feet AMSL

**VIEWING INSTRUCTIONS:**

Printed at 100% the resulting simulation size is 15 inches wide by 10 inches high. At this size and focal length, the simulation should be viewed from a distance 21 inches.



Simulation Photo: View to the South



Simulation Photo: View to the South-Southwest



Simulation Photo: View to the Southwest



Context Photo: View to the West-Southwest

**PRE-DECISIONAL**

**Revolution Wind Farm**

Outer Continental Shelf, OCS-A 0486

*Alternative D Simulation Layouts*

# Aquinnah Overlook – Daytime | Alternative D1



# Aquinnah Overlook – Daytime | Alternative D1



0 1 in 2 in  
This scale is designed to insure the simulation images are printed at the intended size.

# Aquinnah Overlook – Daytime | Alternative D1



# Aquinnah Overlook – Sunset | Alternative D1



# Aquinnah Overlook – Sunset | Alternative D1



# Aquinnah Overlook – Sunset | Alternative D1



**ALTERNATIVE D2 SIMULATION:  
1,104 MW OUTPUT; REMOVAL OF 8 WTG POSITIONS (LEAVES 92)**

**AQUINNAH OVERLOOK**

**VIEWPOINT INFORMATION**

County: Dukes  
 Town: Aquinnah  
 State: Massachusetts  
 Location: Martha's Vineyard  
 Coordinates: 41.34731° N, 70.83700° W  
 Direction of View: South-Southwest (205.5°)  
 Distance to Nearest Visible Turbine: 13.7 Miles

**VISUAL RESOURCES**

**Landscape Similarity Zone:** Coastal Bluff  
**Viewer Type:** Local Residents, Tourists/  
 Vacationers  
**Aesthetic Resource:** Gay Head Aquinnah  
 Shops Area State Historic Area, Gay Head West  
 Tisbury Unit State Scenic Area, Gay Head Cliffs  
 National Natural Landmark

**ENVIRONMENTAL DATA**

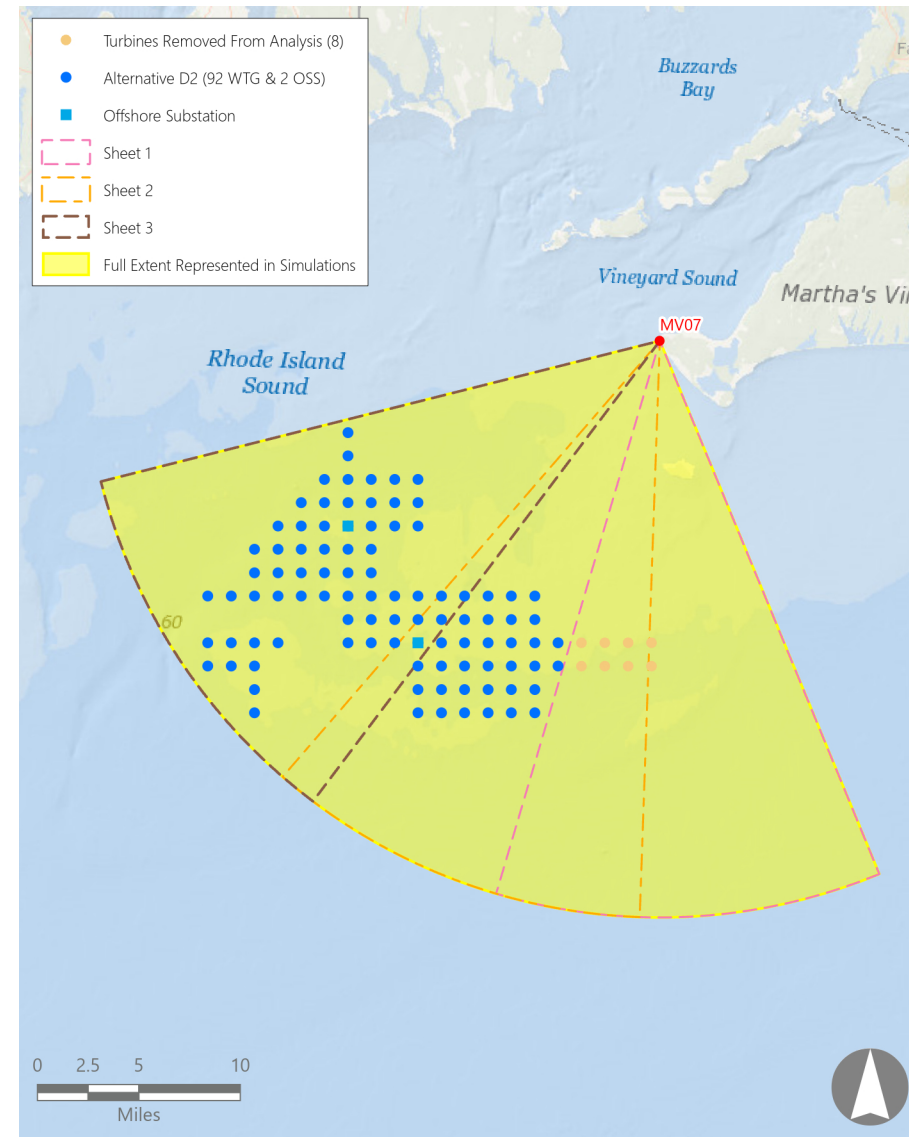
**Date Taken:** 8/4/2017 (11/25/2017)  
**Time:** 8:56 AM (3:58 PM)  
**Temperature:** 75°F (55.0°F)  
**Humidity:** 76%  
**Visibility:** >10 miles  
**Wind Direction:** South (Southwest)  
**Wind Speed:** 10.0 mph (12.0 mph)  
**Conditions Observed:** Partly Cloudy

**CAMERA INFORMATION**

**Camera:** Canon EOS 5D Mark IV  
**Resolution:** 30.4 Megapixels  
**Lens Focal Length:** 50 mm  
**Camera Height:** 145.5 feet AMSL

**VIEWING INSTRUCTIONS:**

Printed at 100% the resulting simulation size is 15 inches wide by 10 inches high. At this size and focal length, the simulation should be viewed from a distance 21 inches.



Simulation Photo: View to the South



Simulation Photo: View to the South-Southwest



Simulation Photo: View to the Southwest



Context Photo: View to the West-Southwest

**PRE-DECISIONAL**

**Revolution Wind Farm**

Outer Continental Shelf, OCS-A 0486

*Alternative D Simulation Layouts*



# Aquinnah Overlook – Daytime | Alternative D2



# Aquinnah Overlook – Daytime | Alternative D2



0 1 in 2 in  
This scale is designed to insure the simulation images are printed at the intended size.

# Aquinnah Overlook – Daytime | Alternative D2



# Aquinnah Overlook – Sunset | Alternative D2



# Aquinnah Overlook – Sunset | Alternative D2



# Aquinnah Overlook – Sunset | Alternative D2



0 1 in 2 in  
This scale is designed to insure the simulation images are printed at the intended size.

**ALTERNATIVE D3 SIMULATION:  
1,116 MW OUTPUT; REMOVAL OF 7 WTG POSITIONS (LEAVES 93)**

**AQUINNAH OVERLOOK**

**VIEWPOINT INFORMATION**

**County:** Dukes  
**Town:** Aquinnah  
**State:** Massachusetts  
**Location:** Martha's Vineyard  
**Coordinates:** 41.34731° N, 70.83700° W  
**Direction of View:** South-Southwest (205.5°)  
**Distance to Nearest Visible Turbine:** 13.7 Miles

**VISUAL RESOURCES**

**Landscape Similarity Zone:** Coastal Bluff  
**Viewer Type:** Local Residents, Tourists/  
 Vacationers  
**Aesthetic Resource:** Gay Head Aquinnah  
 Shops Area State Historic Area, Gay Head West  
 Tisbury Unit State Scenic Area, Gay Head Cliffs  
 National Natural Landmark

**ENVIRONMENTAL DATA**

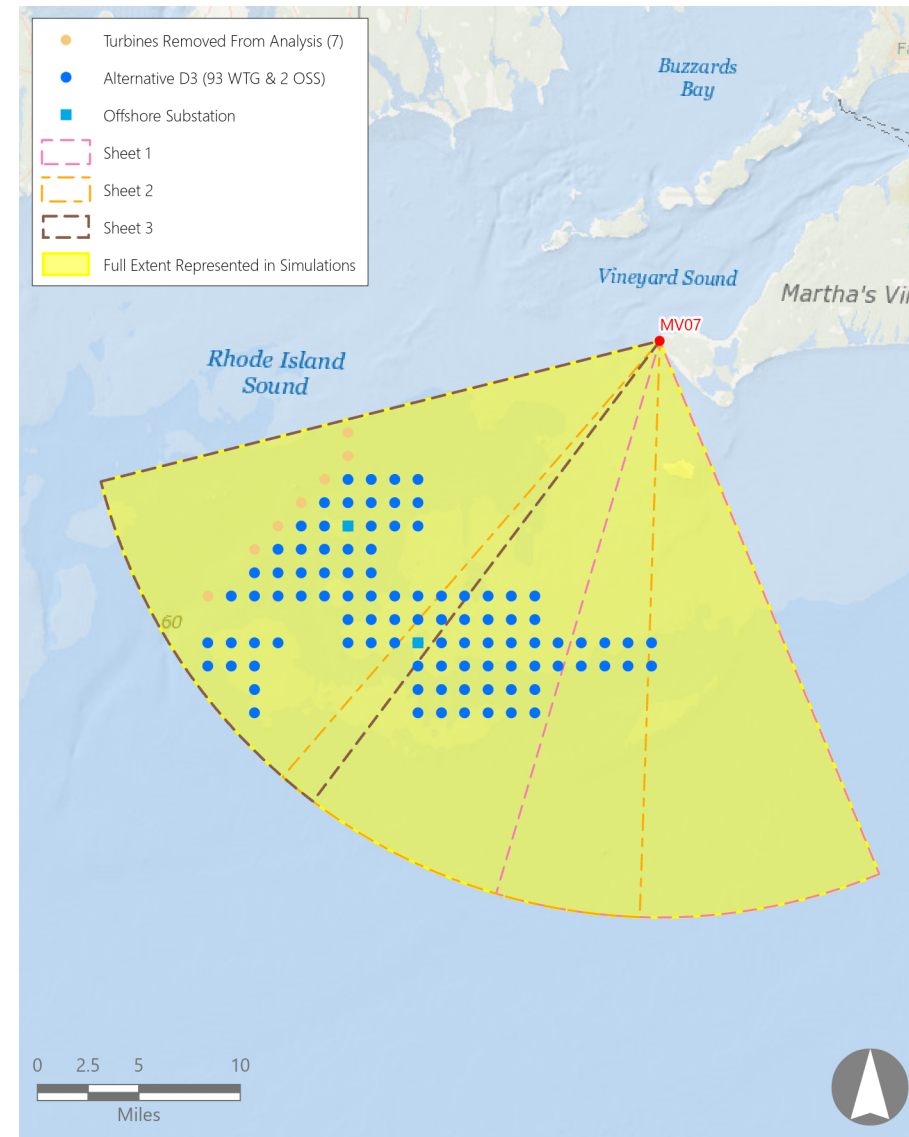
**Date Taken:** 8/4/2017 (11/25/2017)  
**Time:** 8:56 AM (3:58 PM)  
**Temperature:** 75°F (55.0°F)  
**Humidity:** 76%  
**Visibility:** >10 miles  
**Wind Direction:** South (Southwest)  
**Wind Speed:** 10.0 mph (12.0 mph)  
**Conditions Observed:** Partly Cloudy

**CAMERA INFORMATION**

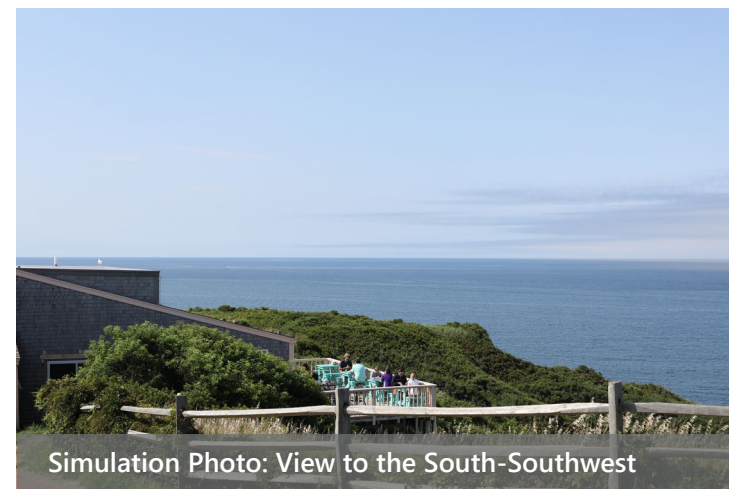
**Camera:** Canon EOS 5D Mark IV  
**Resolution:** 30.4 Megapixels  
**Lens Focal Length:** 50 mm  
**Camera Height:** 145.5 feet AMSL

**VIEWING INSTRUCTIONS:**

Printed at 100% the resulting simulation size is 15 inches wide by 10 inches high. At this size and focal length, the simulation should be viewed from a distance 21 inches.



Simulation Photo: View to the South



Simulation Photo: View to the South-Southwest



Simulation Photo: View to the Southwest



Context Photo: View to the West-Southwest

**PRE-DECISIONAL**

**Revolution Wind Farm**

Outer Continental Shelf, OCS-A 0486

*Alternative D Simulation Layouts*

# Aquinnah Overlook – Daytime | Alternative D3





# Aquinnah Overlook – Daytime | Alternative D3



0 1 in 2 in  
This scale is designed to insure the simulation images are printed at the intended size.

# Aquinnah Overlook – Daytime | Alternative D3



# Aquinnah Overlook – Sunset | Alternative D3



0 1 in 2 in  
This scale is designed to insure the simulation images are printed at the intended size.

# Aquinnah Overlook – Sunset | Alternative D3



# Aquinnah Overlook – Sunset | Alternative D3



0 1 in 2 in  
This scale is designed to insure the simulation images are printed at the intended size.

**ALTERNATIVE D1 AND D2 SIMULATION:  
1,020 MW OUTPUT; REMOVAL OF 15 WTG POSITIONS (LEAVES 85)**

**AQUINNAH OVERLOOK**

**VIEWPOINT INFORMATION**

**County:** Dukes  
**Town:** Aquinnah  
**State:** Massachusetts  
**Location:** Martha's Vineyard  
**Coordinates:** 41.34731° N, 70.83700° W  
**Direction of View:** South-Southwest (205.5°)  
**Distance to Nearest Visible Turbine:** 13.7 Miles

**VISUAL RESOURCES**

**Landscape Similarity Zone:** Coastal Bluff  
**Viewer Type:** Local Residents, Tourists/  
 Vacationers  
**Aesthetic Resource:** Gay Head Aquinnah  
 Shops Area State Historic Area, Gay Head West  
 Tisbury Unit State Scenic Area, Gay Head Cliffs  
 National Natural Landmark

**ENVIRONMENTAL DATA**

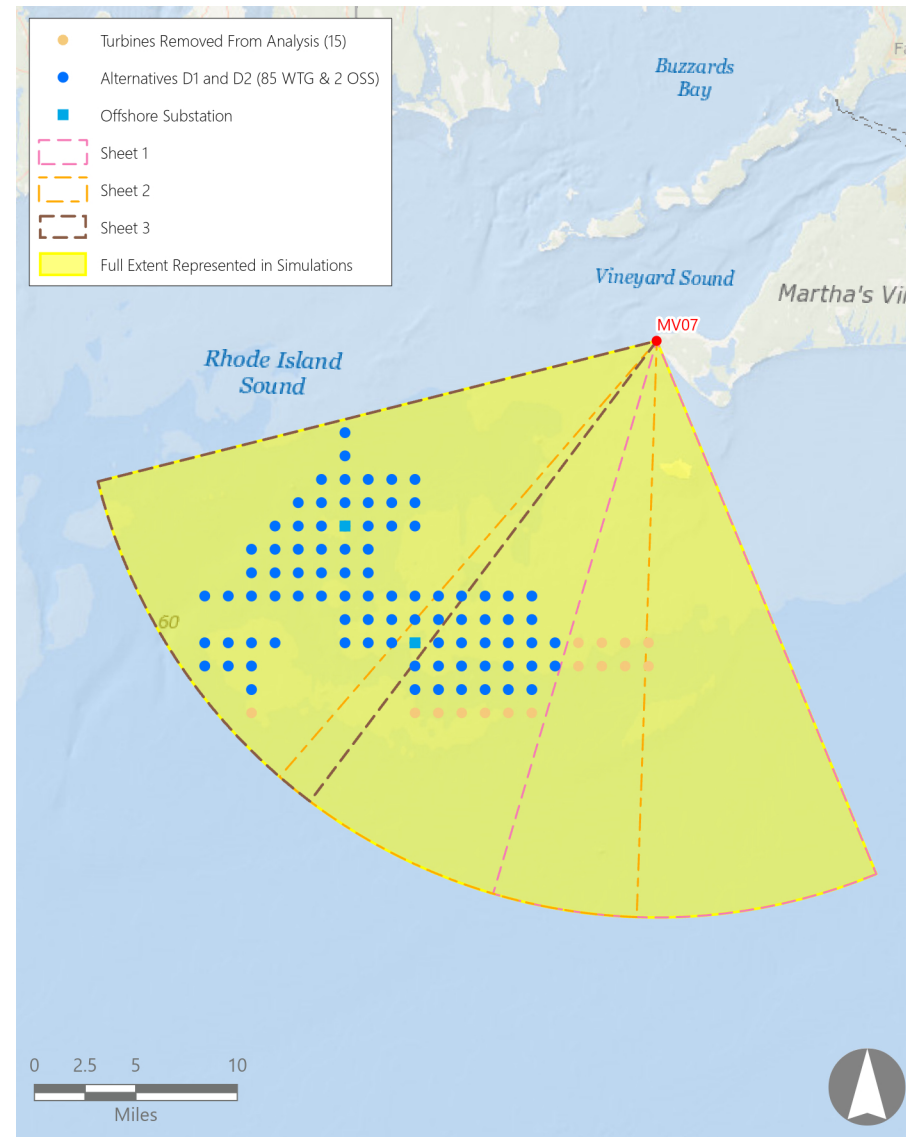
**Date Taken:** 8/4/2017 (11/25/2017)  
**Time:** 8:56 AM (3:58 PM)  
**Temperature:** 75°F (55.0°F)  
**Humidity:** 76%  
**Visibility:** >10 miles  
**Wind Direction:** South (Southwest)  
**Wind Speed:** 10.0 mph (12.0 mph)  
**Conditions Observed:** Partly Cloudy

**CAMERA INFORMATION**

**Camera:** Canon EOS 5D Mark IV  
**Resolution:** 30.4 Megapixels  
**Lens Focal Length:** 50 mm  
**Camera Height:** 145.5 feet AMSL

**VIEWING INSTRUCTIONS:**

Printed at 100% the resulting simulation size is 15 inches wide by 10 inches high. At this size and focal length, the simulation should be viewed from a distance 21 inches.



Simulation Photo: View to the South



Simulation Photo: View to the South-Southwest



Simulation Photo: View to the Southwest



Context Photo: View to the West-Southwest

**PRE-DECISIONAL**

**Revolution Wind Farm**

Outer Continental Shelf, OCS-A 0486

*Alternative D Simulation Layouts*

# Aquinnah Overlook – Daytime | Alternative D1 and D2



0 1 in 2 in  
This scale is designed to insure the simulation images are printed at the intended size.

# Aquinnah Overlook – Daytime | Alternative D1 and D2



0 1 in 2 in  
This scale is designed to insure the simulation images are printed at the intended size.



# Aquinnah Overlook – Daytime | Alternative D1 and D2



0 1 in 2 in  
This scale is designed to insure the simulation images are printed at the intended size.

# Aquinnah Overlook – Sunset | Alternative D1 and D2



0 1 in 2 in  
This scale is designed to insure the simulation images are printed at the intended size.

# Aquinnah Overlook – Sunset | Alternative D1 and D2



0 1 in 2 in  
This scale is designed to insure the simulation images are printed at the intended size.

# Aquinnah Overlook – Sunset | Alternative D1 and D2



**ALTERNATIVE D1 AND D3 SIMULATION:  
1,032 MW OUTPUT; REMOVAL OF 14 WTG POSITIONS (LEAVES 86)**

**AQUINNAH OVERLOOK**

**VIEWPOINT INFORMATION**

**County:** Dukes  
**Town:** Aquinnah  
**State:** Massachusetts  
**Location:** Martha's Vineyard  
**Coordinates:** 41.34731° N, 70.83700° W  
**Direction of View:** South-Southwest (205.5°)  
**Distance to Nearest Visible Turbine:** 13.7 Miles

**VISUAL RESOURCES**

**Landscape Similarity Zone:** Coastal Bluff  
**Viewer Type:** Local Residents, Tourists/  
 Vacationers  
**Aesthetic Resource:** Gay Head Aquinnah  
 Shops Area State Historic Area, Gay Head West  
 Tisbury Unit State Scenic Area, Gay Head Cliffs  
 National Natural Landmark

**ENVIRONMENTAL DATA**

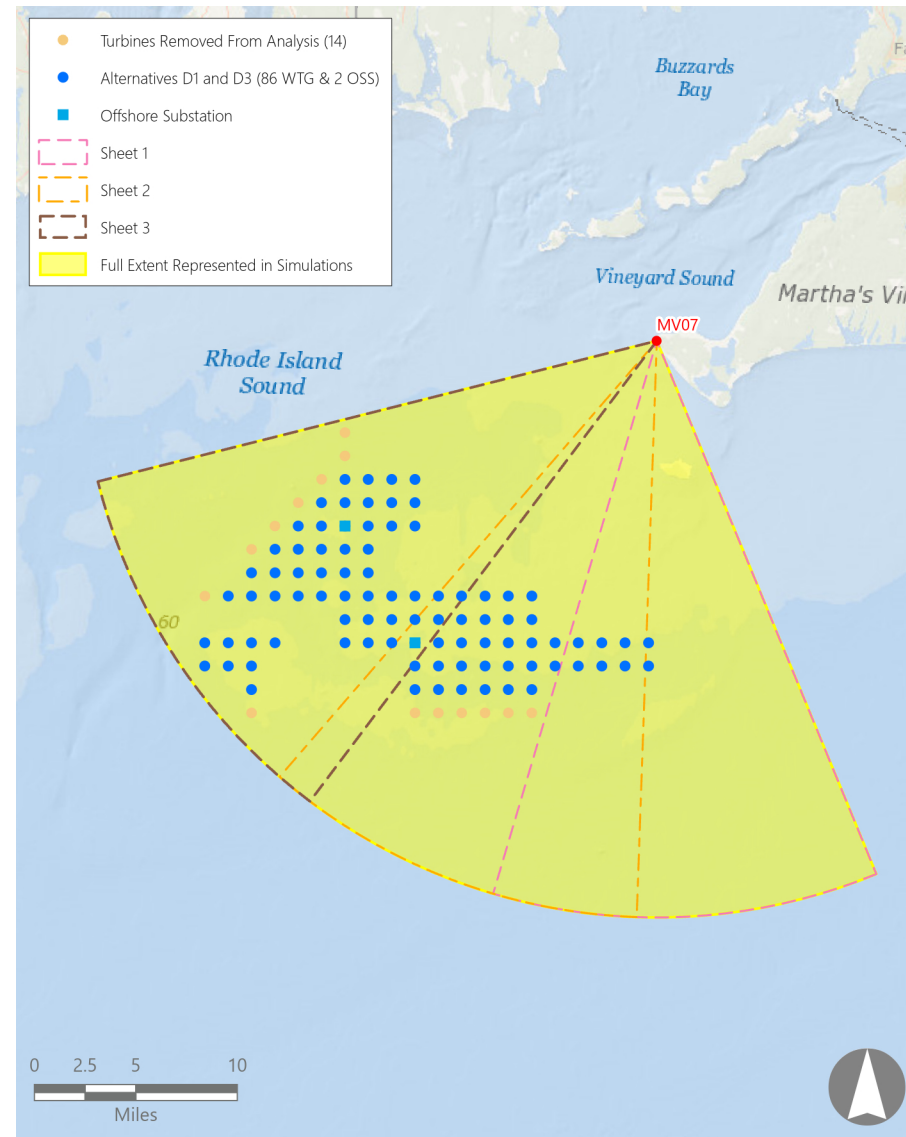
**Date Taken:** 8/4/2017 (11/25/2017)  
**Time:** 8:56 AM (3:58 PM)  
**Temperature:** 75°F (55.0°F)  
**Humidity:** 76%  
**Visibility:** >10 miles  
**Wind Direction:** South (Southwest)  
**Wind Speed:** 10.0 mph (12.0 mph)  
**Conditions Observed:** Partly Cloudy

**CAMERA INFORMATION**

**Camera:** Canon EOS 5D Mark IV  
**Resolution:** 30.4 Megapixels  
**Lens Focal Length:** 50 mm  
**Camera Height:** 145.5 feet AMSL

**VIEWING INSTRUCTIONS:**

Printed at 100% the resulting simulation size is 15 inches wide by 10 inches high. At this size and focal length, the simulation should be viewed from a distance 21 inches.



Simulation Photo: View to the South



Simulation Photo: View to the South-Southwest



Simulation Photo: View to the Southwest



Context Photo: View to the West-Southwest

**PRE-DECISIONAL**

**Revolution Wind Farm**

Outer Continental Shelf, OCS-A 0486

*Alternative D Simulation Layouts*

# Aquinnah Overlook – Daytime | Alternative D1 and D3



0 1 in 2 in  
This scale is designed to insure the simulation images are printed at the intended size.

# Aquinnah Overlook – Daytime | Alternative D1 and D3



0 1 in 2 in  
This scale is designed to insure the simulation images are printed at the intended size.

# Aquinnah Overlook – Daytime | Alternative D1 and D3



0 1 in 2 in  
This scale is designed to insure the simulation images are printed at the intended size.



# Aquinnah Overlook – Sunset | Alternative D1 and D3



0 1 in 2 in  
This scale is designed to insure the simulation images are printed at the intended size.

# Aquinnah Overlook – Sunset | Alternative D1 and D3



0 1 in 2 in  
This scale is designed to insure the simulation images are printed at the intended size.

# Aquinnah Overlook – Sunset | Alternative D1 and D3



0 1 in 2 in  
This scale is designed to insure the simulation images are printed at the intended size.

**ALTERNATIVE D1, D2 AND D3 SIMULATION:  
936 MW OUTPUT; REMOVAL OF 22 WTG POSITIONS (LEAVES 78)**

**AQUINNAH OVERLOOK**

**VIEWPOINT INFORMATION**

**County:** Dukes  
**Town:** Aquinnah  
**State:** Massachusetts  
**Location:** Martha's Vineyard  
**Coordinates:** 41.34731° N, 70.83700° W  
**Direction of View:** South-Southwest (205.5°)  
**Distance to Nearest Visible Turbine:** 13.7 Miles

**VISUAL RESOURCES**

**Landscape Similarity Zone:** Coastal Bluff  
**Viewer Type:** Local Residents, Tourists/  
 Vacationers  
**Aesthetic Resource:** Gay Head Aquinnah  
 Shops Area State Historic Area, Gay Head West  
 Tisbury Unit State Scenic Area, Gay Head Cliffs  
 National Natural Landmark

**ENVIRONMENTAL DATA**

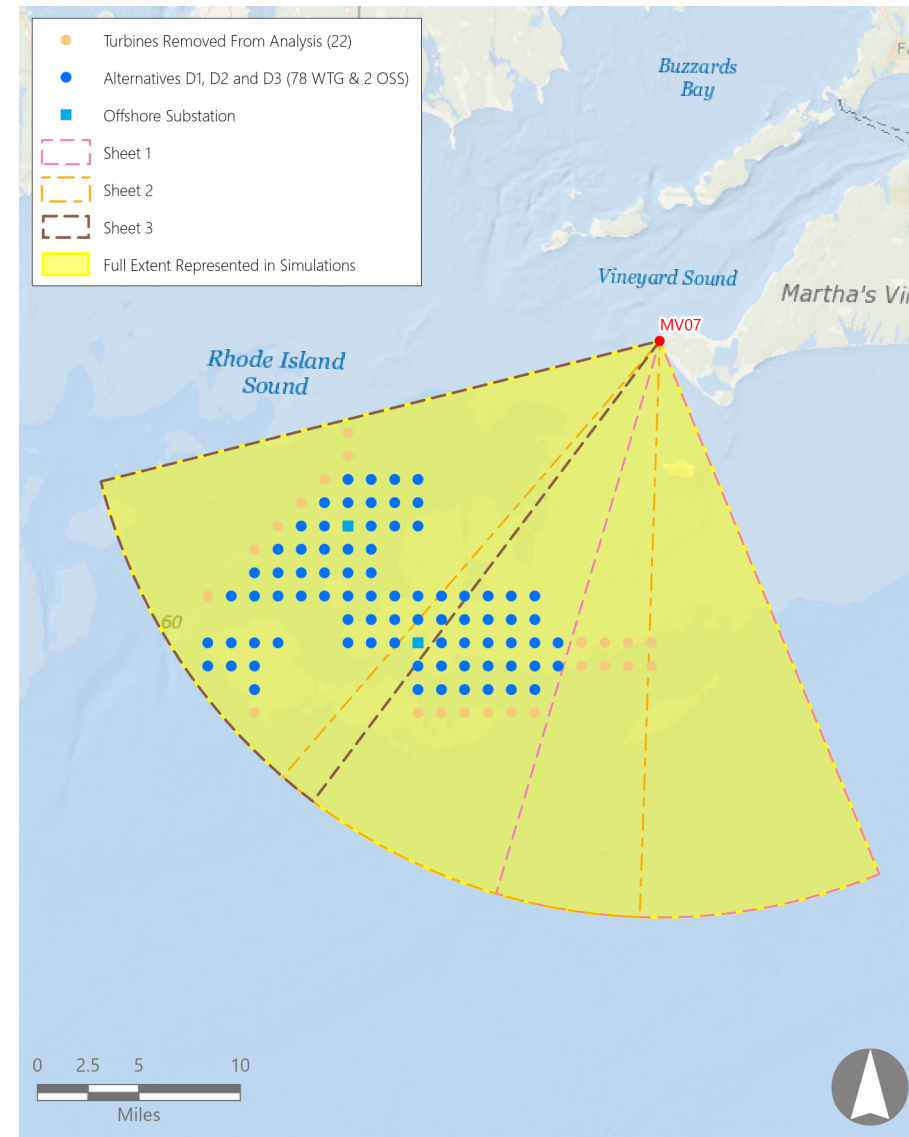
**Date Taken:** 8/4/2017 (11/25/2017)  
**Time:** 8:56 AM (3:58 PM)  
**Temperature:** 75°F (55.0°F)  
**Humidity:** 76%  
**Visibility:** >10 miles  
**Wind Direction:** South (Southwest)  
**Wind Speed:** 10.0 mph (12.0 mph)  
**Conditions Observed:** Partly Cloudy

**CAMERA INFORMATION**

**Camera:** Canon EOS 5D Mark IV  
**Resolution:** 30.4 Megapixels  
**Lens Focal Length:** 50 mm  
**Camera Height:** 145.5 feet AMSL

**VIEWING INSTRUCTIONS:**

Printed at 100% the resulting simulation size is 15 inches wide by 10 inches high. At this size and focal length, the simulation should be viewed from a distance 21 inches.



Simulation Photo: View to the South



Simulation Photo: View to the South-Southwest



Simulation Photo: View to the Southwest



Context Photo: View to the West-Southwest

**PRE-DECISIONAL**

**Revolution Wind Farm**

Outer Continental Shelf, OCS-A 0486

*Alternative D Simulation Layouts*

# Aquinnah Overlook – Daytime | Alternative D1, D2 and D3



0 1 in 2 in  
This scale is designed to insure the simulation images are printed at the intended size.

# Aquinnah Overlook – Daytime | Alternative D1, D2 and D3



0 1 in 2 in  
This scale is designed to insure the simulation images are printed at the intended size.

# Aquinnah Overlook – Daytime | Alternative D1, D2 and D3



0 1 in 2 in  
This scale is designed to insure the simulation images are printed at the intended size.

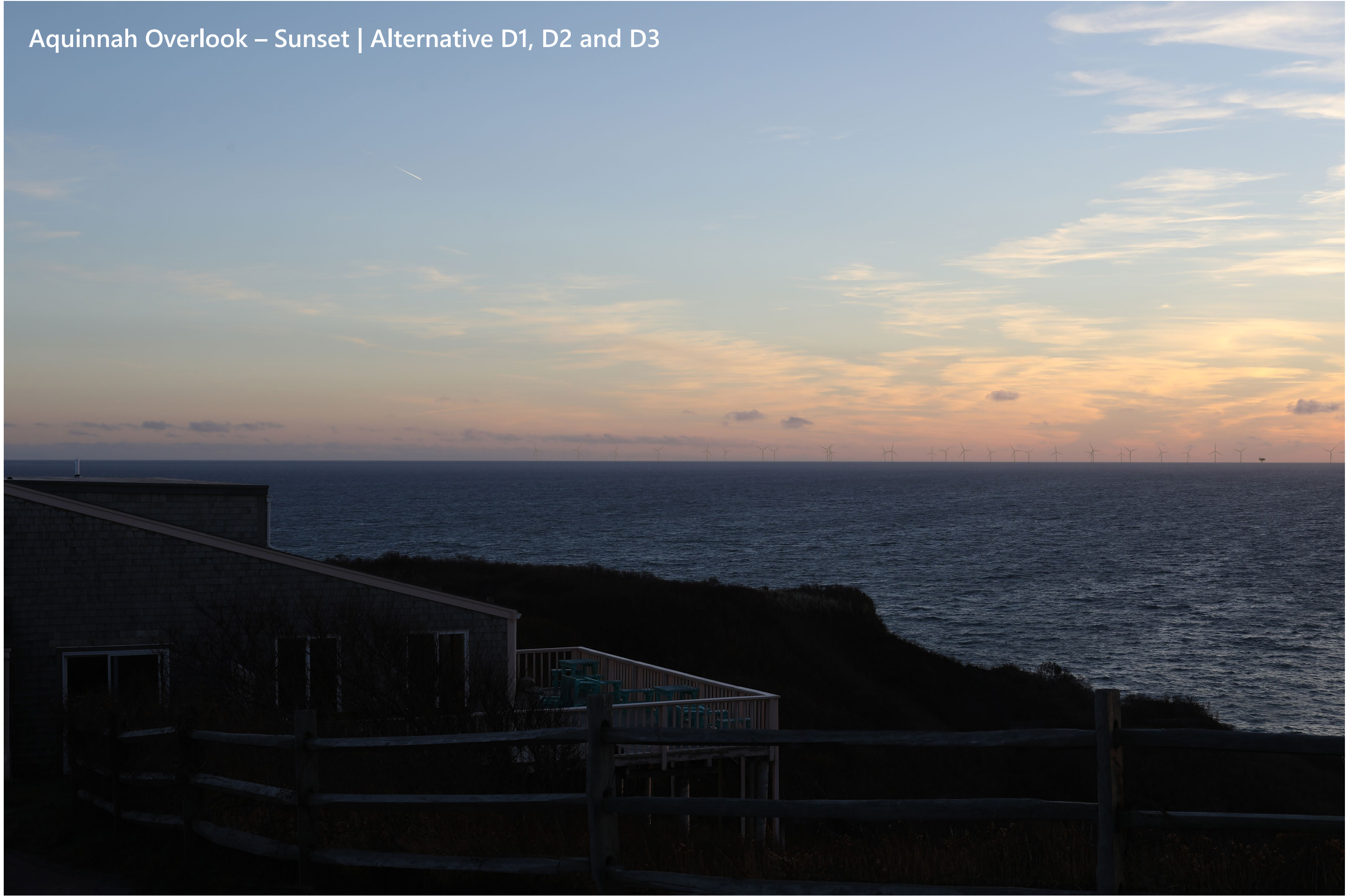
# Aquinnah Overlook – Sunset | Alternative D1, D2 and D3



0 1 in 2 in  
This scale is designed to insure the simulation images are printed at the intended size.



# Aquinnah Overlook – Sunset | Alternative D1, D2 and D3



0 1 in 2 in  
This scale is designed to insure the simulation images are printed at the intended size.

# Aquinnah Overlook – Sunset | Alternative D1, D2 and D3



0 1 in 2 in  
This scale is designed to insure the simulation images are printed at the intended size.

**ALTERNATIVE D2 AND D3 SIMULATION:  
1,020 MW OUTPUT; REMOVAL OF 15 WTG POSITIONS (LEAVES 85)**

**AQUINNAH OVERLOOK**

**VIEWPOINT INFORMATION**

**County:** Dukes  
**Town:** Aquinnah  
**State:** Massachusetts  
**Location:** Martha's Vineyard  
**Coordinates:** 41.34731° N, 70.83700° W  
**Direction of View:** South-Southwest (205.5°)  
**Distance to Nearest Visible Turbine:** 13.7 Miles

**VISUAL RESOURCES**

**Landscape Similarity Zone:** Coastal Bluff  
**Viewer Type:** Local Residents, Tourists/  
 Vacationers  
**Aesthetic Resource:** Gay Head Aquinnah  
 Shops Area State Historic Area, Gay Head West  
 Tisbury Unit State Scenic Area, Gay Head Cliffs  
 National Natural Landmark

**ENVIRONMENTAL DATA**

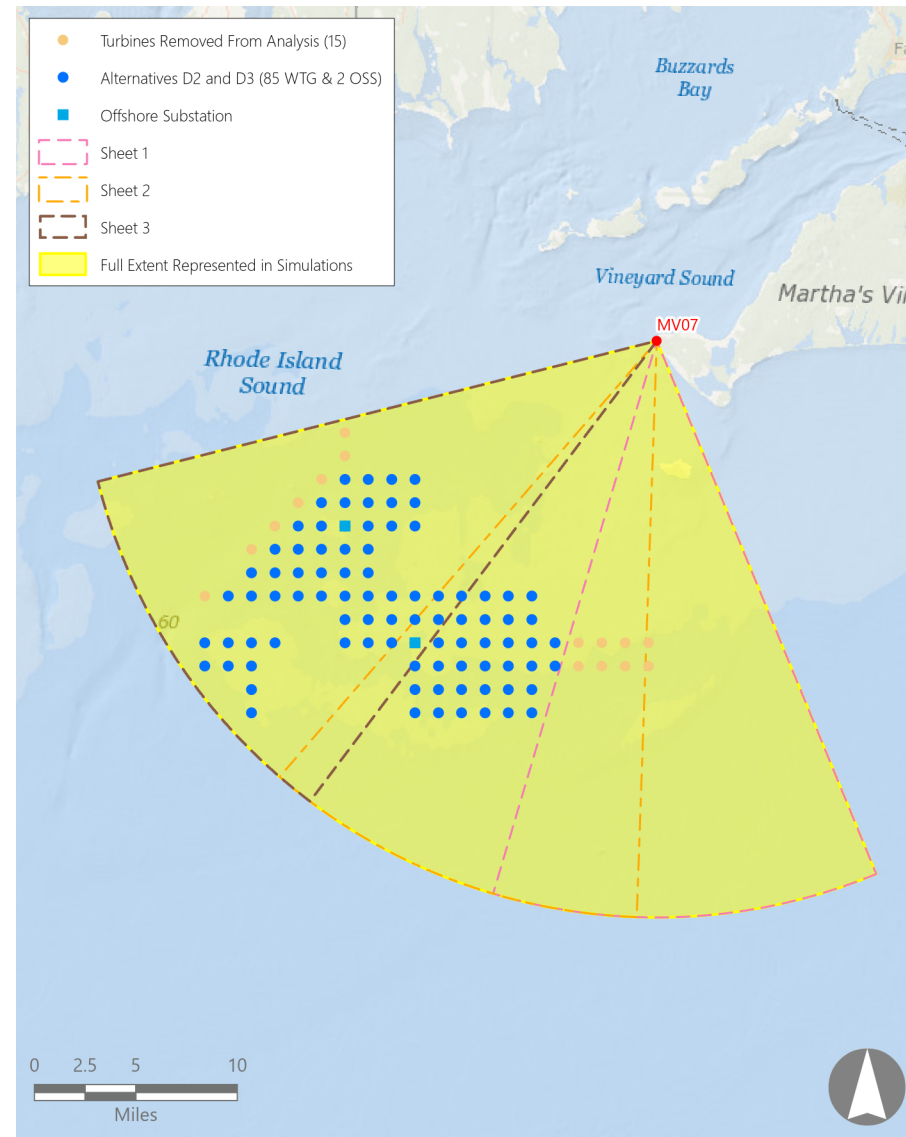
**Date Taken:** 8/4/2017 (11/25/2017)  
**Time:** 8:56 AM (3:58 PM)  
**Temperature:** 75°F (55.0°F)  
**Humidity:** 76%  
**Visibility:** >10 miles  
**Wind Direction:** South (Southwest)  
**Wind Speed:** 10.0 mph (12.0 mph)  
**Conditions Observed:** Partly Cloudy

**CAMERA INFORMATION**

**Camera:** Canon EOS 5D Mark IV  
**Resolution:** 30.4 Megapixels  
**Lens Focal Length:** 50 mm  
**Camera Height:** 145.5 feet AMSL

**VIEWING INSTRUCTIONS:**

Printed at 100% the resulting simulation size is 15 inches wide by 10 inches high. At this size and focal length, the simulation should be viewed from a distance 21 inches.



Simulation Photo: View to the South



Simulation Photo: View to the South-Southwest



Simulation Photo: View to the Southwest



Context Photo: View to the West-Southwest

**PRE-DECISIONAL**

**Revolution Wind Farm**

Outer Continental Shelf, OCS-A 0486

*Alternative D Simulation Layouts*

# Aquinnah Overlook – Daytime | Alternative D2 and D3



0 1 in 2 in  
This scale is designed to insure the simulation images are printed at the intended size.

# Aquinnah Overlook – Daytime | Alternative D2 and D3



0 1 in 2 in  
This scale is designed to insure the simulation images are printed at the intended size.

# Aquinnah Overlook – Daytime | Alternative D2 and D3



0 1 in 2 in  
This scale is designed to insure the simulation images are printed at the intended size.

# Aquinnah Overlook – Sunset | Alternative D2 and D3



0 1 in 2 in  
This scale is designed to insure the simulation images are printed at the intended size.

# Aquinnah Overlook – Sunset | Alternative D2 and D3



0 1 in 2 in  
This scale is designed to insure the simulation images are printed at the intended size.



# Aquinnah Overlook – Sunset | Alternative D2 and D3

