

**REVOLUTION WIND SIMULATION:
98 WTG POSITIONS**

AQUINNAH OVERLOOK

VIEWPOINT INFORMATION

County: Dukes
Town: Aquinnah
State: Massachusetts
Location: Martha's Vineyard
Coordinates: 41.34731° N, 70.83700° W
Direction of View: South-Southwest (205.5°)
Distance to Nearest Visible Turbine: 13.7 Miles

VISUAL RESOURCES

Landscape Similarity Zone: Coastal Bluff
Viewer Type: Local Residents, Tourists/
 Vacationers
Aesthetic Resource: Gay Head Aquinnah
 Shops Area State Historic Area, Gay Head West
 Tisbury Unit State Scenic Area, Gay Head Cliffs
 National Natural Landmark

ENVIRONMENTAL DATA

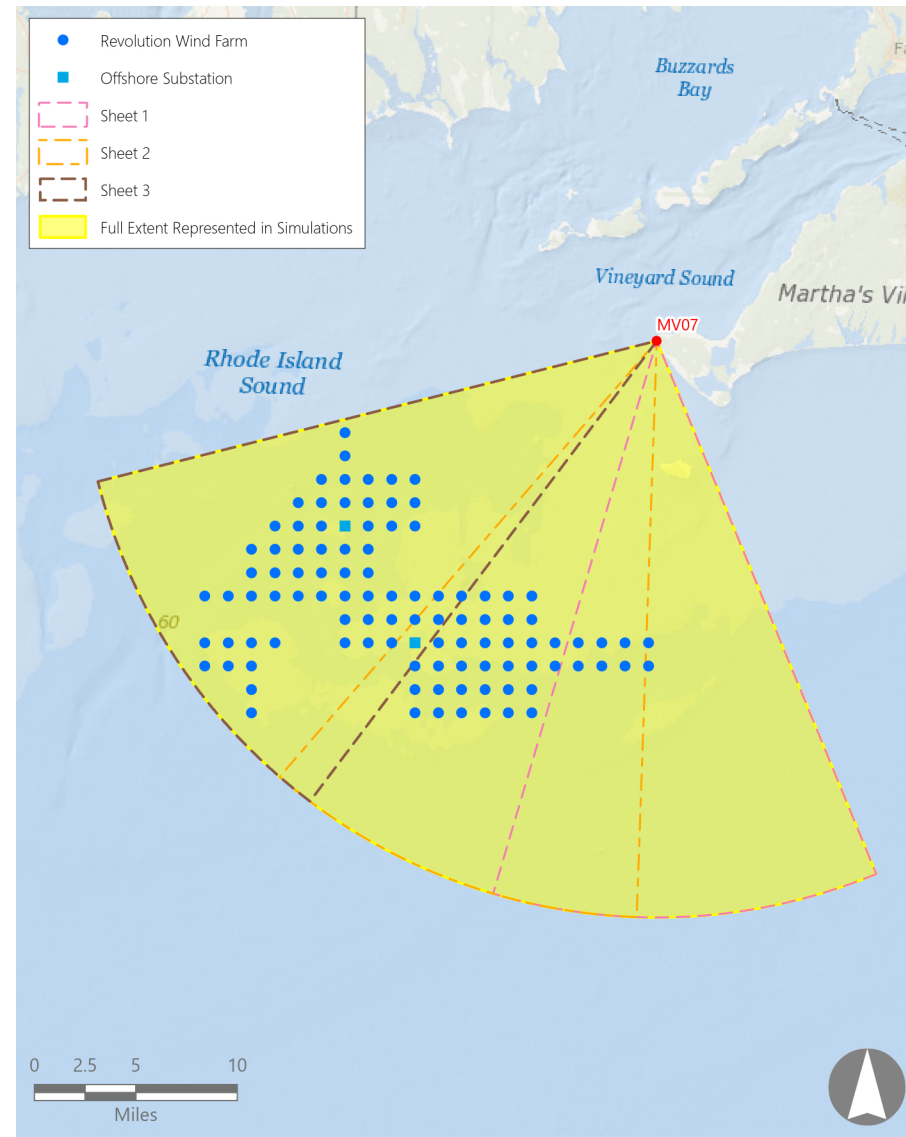
Date Taken: 8/4/2017 (11/25/2017)
Time: 8:56 AM (3:58 PM)
Temperature: 75°F (55.0°F)
Humidity: 76%
Visibility: >10 miles
Wind Direction: South (Southwest)
Wind Speed: 10.0 mph (12.0 mph)
Conditions Observed: Partly Cloudy

CAMERA INFORMATION

Camera: Canon EOS 5D Mark IV
Resolution: 30.4 Megapixels
Lens Focal Length: 50 mm
Camera Height: 145.5 feet AMSL

VIEWING INSTRUCTIONS:

Printed at 100% the resulting simulation size is 15 inches wide by 10 inches high. At this size and focal length, the simulation should be viewed from a distance 21 inches.



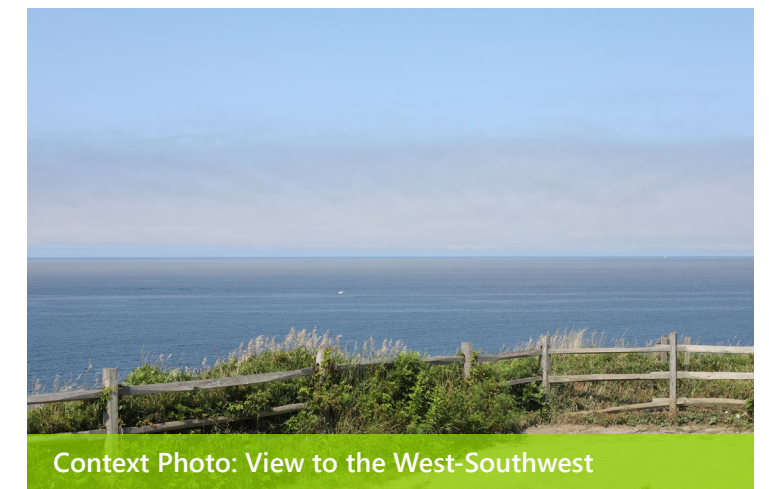
Simulation Photo: View to the South



Simulation Photo: View to the South-Southwest



Simulation Photo: View to the Southwest



Context Photo: View to the West-Southwest

PRE-DECISIONAL

Revolution Wind Farm

Outer Continental Shelf, OCS-A 0486

Alternative E Simulation Layouts

Viewpoint MV07: View from Aquinnah Overlook, Aquinnah, Massachusetts

Aquinnah Overlook – Daytime | Simulation Revolution Wind Farm



0 1 in 2 in
This scale is designed to insure the simulation images are printed at the intended size.

Aquinnah Overlook – Daytime | Simulation Revolution Wind Farm



Aquinnah Overlook – Daytime | Simulation Revolution Wind Farm



Aquinnah Overlook – Sunset | Simulation Revolution Wind Farm



Aquinnah Overlook – Sunset | Simulation Revolution Wind Farm



Aquinnah Overlook – Sunset | Simulation Revolution Wind Farm



ALTERNATIVE E1:
704 MW OUTPUT; REMOVAL OF 36 WTG POSITIONS (LEAVES 64)

AQUINNAH OVERLOOK

VIEWPOINT INFORMATION

County: Dukes
Town: Aquinnah
State: Massachusetts
Location: Martha's Vineyard
Coordinates: 41.34731° N, 70.83700° W
Direction of View: South-Southwest (205.5°)
Distance to Nearest Visible Turbine: 14.9 Miles

VISUAL RESOURCES

Landscape Similarity Zone: Coastal Bluff
Viewer Type: Local Residents, Tourists/
 Vacationers
Aesthetic Resource: Gay Head Aquinnah
 Shops Area State Historic Area, Gay Head West
 Tisbury Unit State Scenic Area, Gay Head Cliffs
 National Natural Landmark

ENVIRONMENTAL DATA

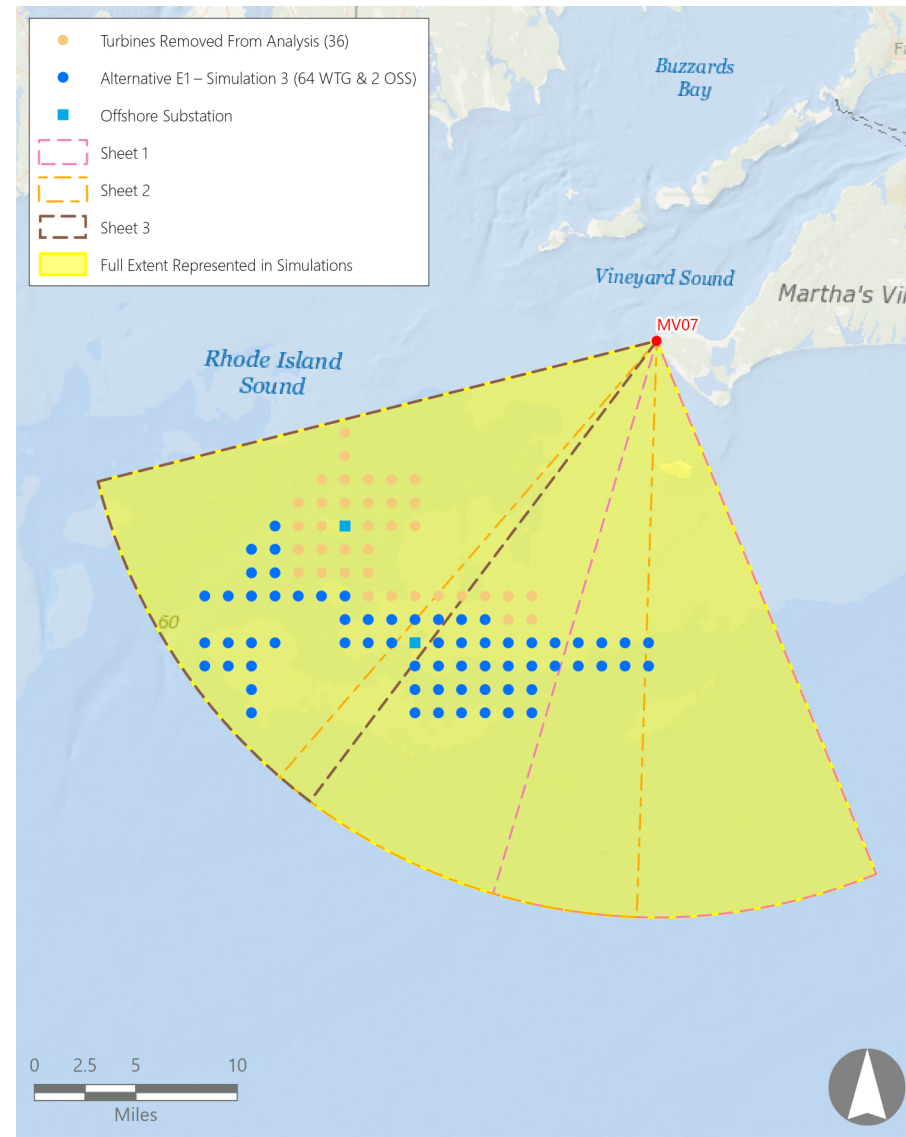
Date Taken: 8/4/2017 (11/25/2017)
Time: 8:56 AM (3:58 PM)
Temperature: 75°F (55.0°F)
Humidity: 76%
Visibility: >10 miles
Wind Direction: South (Southwest)
Wind Speed: 10.0 mph (12.0 mph)
Conditions Observed: Partly Cloudy

CAMERA INFORMATION

Camera: Canon EOS 5D Mark IV
Resolution: 30.4 Megapixels
Lens Focal Length: 50 mm
Camera Height: 145.5 feet AMSL

VIEWING INSTRUCTIONS:

Printed at 100% the resulting simulation size is 15 inches wide by 10 inches high. At this size and focal length, the simulation should be viewed from a distance 21 inches.



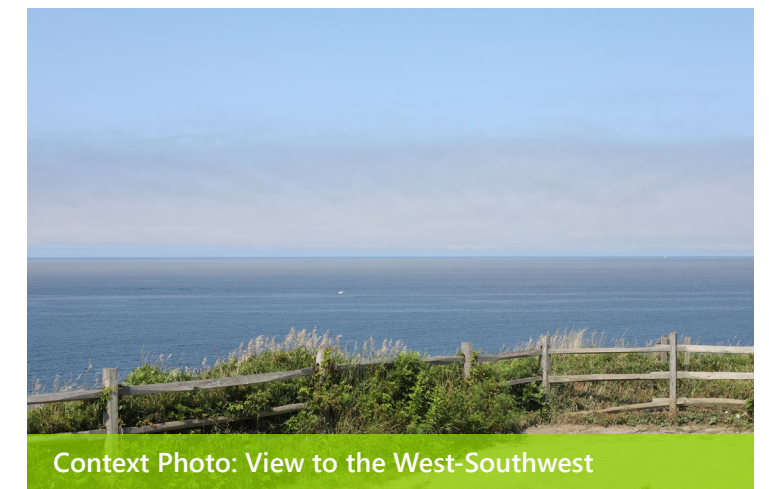
Simulation Photo: View to the South



Simulation Photo: View to the South-Southwest



Simulation Photo: View to the Southwest



Context Photo: View to the West-Southwest

PRE-DECISIONAL

Revolution Wind Farm

Outer Continental Shelf, OCS-A 0486

Alternative E Simulation Layouts

Viewpoint MV07: View from Aquinnah Overlook, Aquinnah, Massachusetts

Aquinnah Overlook – Daytime | Alternative E1



0 1 in 2 in
This scale is designed to insure the simulation images are printed at the intended size.

Aquinnah Overlook – Daytime | Alternative E1



0 1 in 2 in
This scale is designed to insure the simulation images are printed at the intended size.

Aquinnah Overlook – Daytime | Alternative E1



0 1 in 2 in
This scale is designed to insure the simulation images are printed at the intended size.

Aquinnah Overlook – Sunset | Alternative E1



Aquinnah Overlook – Sunset | Alternative E1



Aquinnah Overlook – Sunset | Alternative E1



0 1 in 2 in
This scale is designed to insure the simulation images are printed at the intended size.

ALTERNATIVE E2:
880 MW OUTPUT; REMOVAL OF 19 WTG POSITIONS (LEAVES 81)

AQUINNAH OVERLOOK

VIEWPOINT INFORMATION

County: Dukes
Town: Aquinnah
State: Massachusetts
Location: Martha's Vineyard
Coordinates: 41.34731° N, 70.83700° W
Direction of View: South-Southwest (205.5°)
Distance to Nearest Visible Turbine: 14.3 Miles

VISUAL RESOURCES

Landscape Similarity Zone: Coastal Bluff
Viewer Type: Local Residents, Tourists/
 Vacationers
Aesthetic Resource: Gay Head Aquinnah
 Shops Area State Historic Area, Gay Head West
 Tisbury Unit State Scenic Area, Gay Head Cliffs
 National Natural Landmark

ENVIRONMENTAL DATA

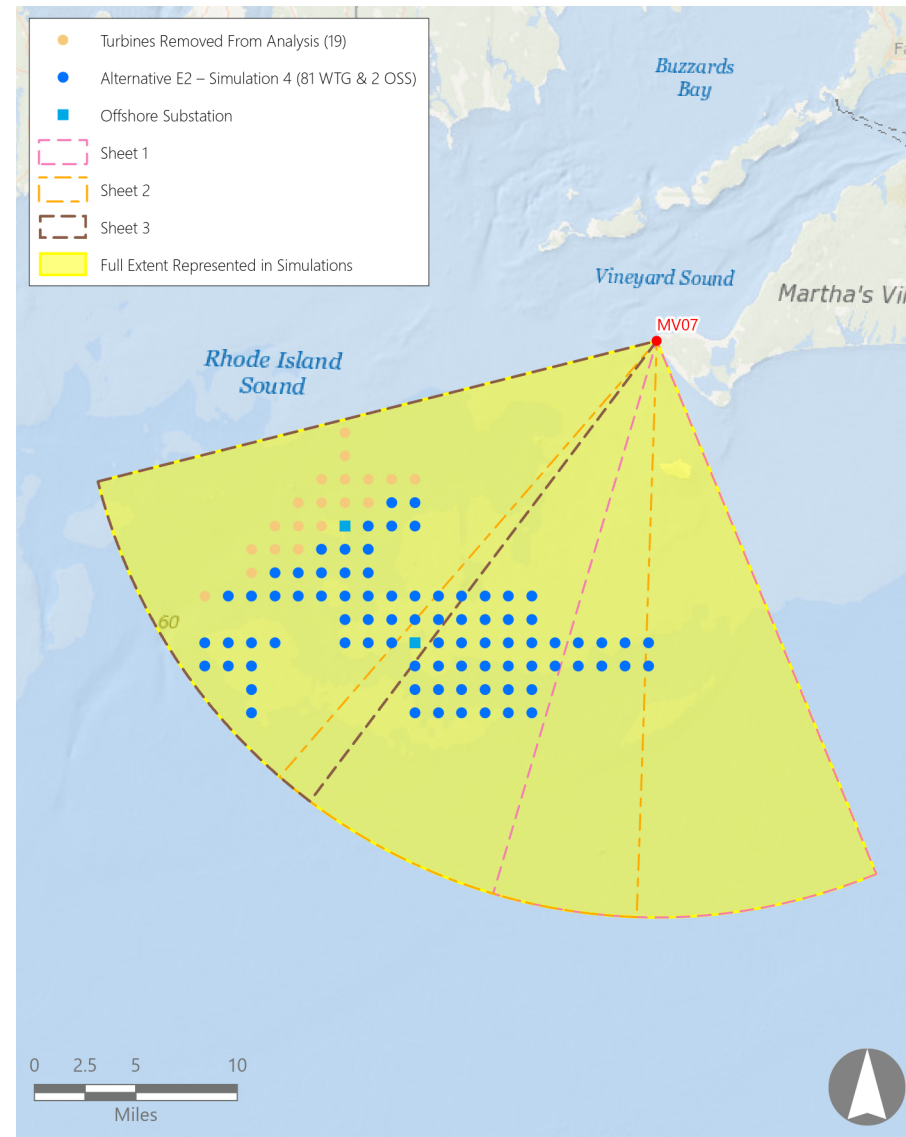
Date Taken: 8/4/2017 (11/25/2017)
Time: 8:56 AM (3:58 PM)
Temperature: 75°F (55.0°F)
Humidity: 76%
Visibility: >10 miles
Wind Direction: South (Southwest)
Wind Speed: 10.0 mph (12.0 mph)
Conditions Observed: Partly Cloudy

CAMERA INFORMATION

Camera: Canon EOS 5D Mark IV
Resolution: 30.4 Megapixels
Lens Focal Length: 50 mm
Camera Height: 145.5 feet AMSL

VIEWING INSTRUCTIONS:

Printed at 100% the resulting simulation size is 15 inches wide by 10 inches high. At this size and focal length, the simulation should be viewed from a distance 21 inches.



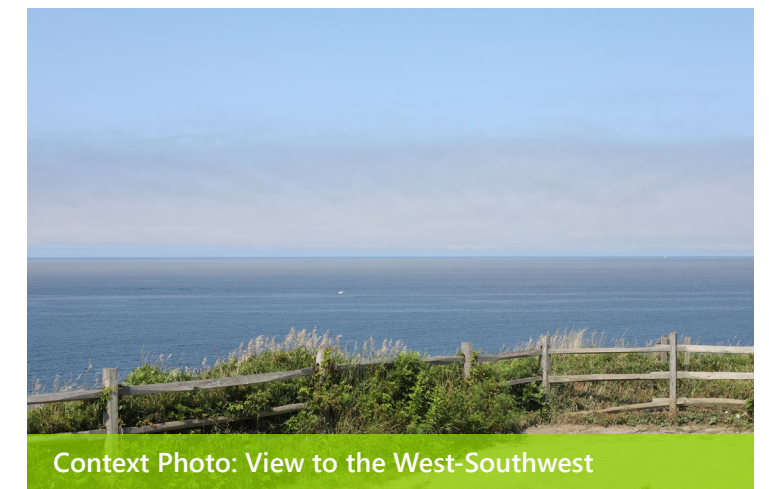
Simulation Photo: View to the South



Simulation Photo: View to the South-Southwest



Simulation Photo: View to the Southwest



Context Photo: View to the West-Southwest

PRE-DECISIONAL

Revolution Wind Farm

Outer Continental Shelf, OCS-A 0486

Alternative E Simulation Layouts

Viewpoint MV07: View from Aquinnah Overlook, Aquinnah, Massachusetts

Aquinnah Overlook – Daytime | Alternative E2



0 1 in 2 in
This scale is designed to insure the simulation images are printed at the intended size.

Aquinnah Overlook – Daytime | Alternative E2



0 1 in 2 in
This scale is designed to insure the simulation images are printed at the intended size.

Aquinnah Overlook – Daytime | Alternative E2



0 1 in 2 in
This scale is designed to insure the simulation images are printed at the intended size.

Aquinnah Overlook – Sunset | Alternative E2



Aquinnah Overlook – Sunset | Alternative E2



Aquinnah Overlook – Sunset | Alternative E2

