

# ORIGINAL COP LAYOUT SIMULATION:

## AQUINNAH OVERLOOK

### VIEWPOINT INFORMATION

County: Dukes

Town: Aquinnah

State: Massachusetts

Location: Martha's Vineyard

Coordinates: 41.34730° N, 70.83690° W

Direction of Morning/Night View:  
West-southwest (237.0°)

Direction of Sunset View:  
West-southwest (246.0°)

Distance to Nearest Visible Turbine: 13.7 Miles

### ENVIRONMENTAL DATA

Date Taken: 9/11/2021

Time: 6:37 AM

Temperature: 51°F

Humidity: 92%

Visibility: >10 miles

Conditions Observed: Fair

### CAMERA INFORMATION

Camera: Canon EOS 5D Mark IV

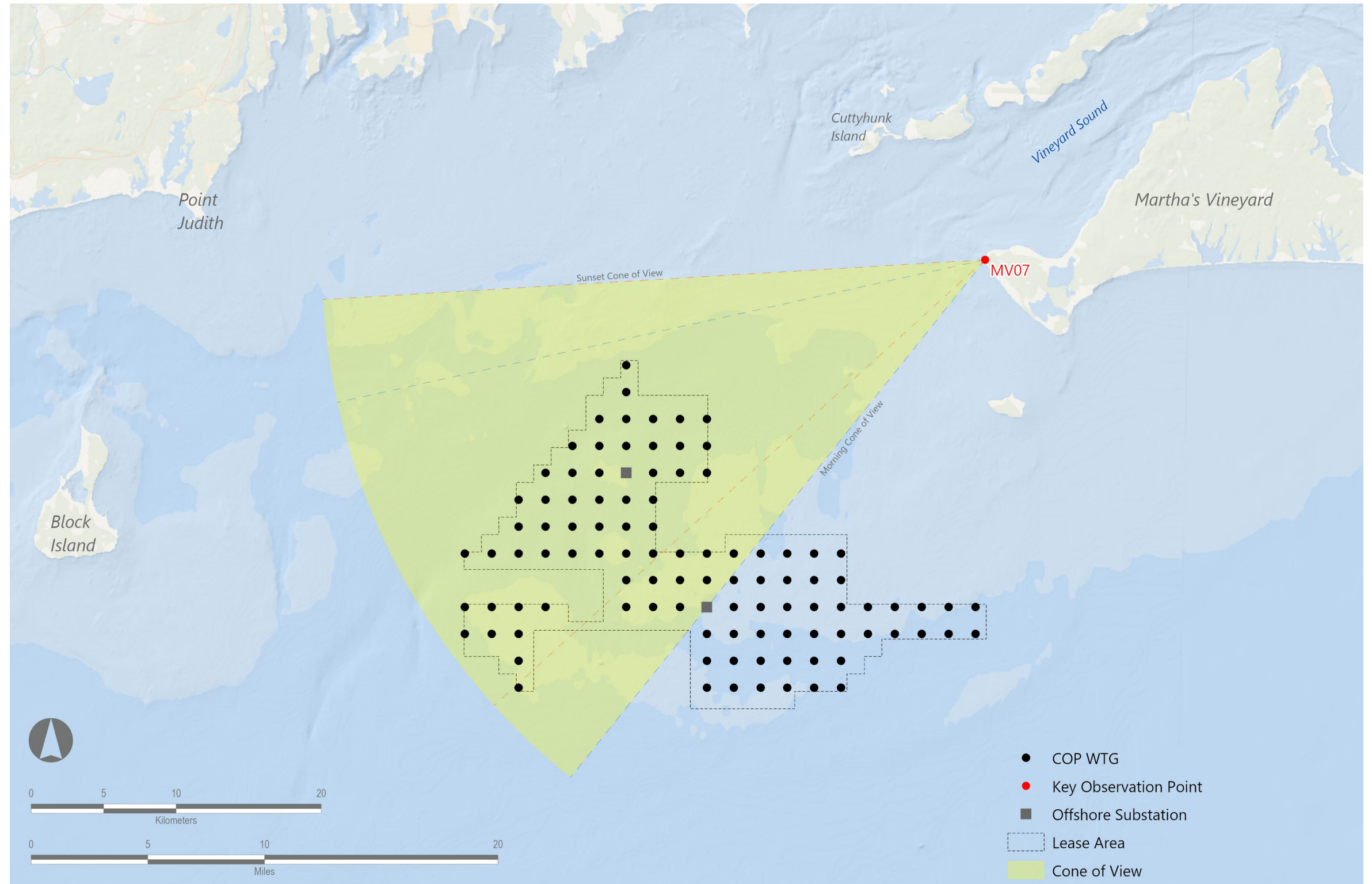
Resolution: 30.4 Megapixels

Lens Focal Length: 50 mm

Camera Height: 145.5 feet AMSL

### SIMULATION VIEWING INSTRUCTIONS:

Printed at 100% the resulting simulation size is 15 inches wide by 10 inches high. At this size and focal length, the simulation should be viewed from a distance 21 inches.



## PRE-DECISIONAL

### Revolution Wind Farm

Outer Continental Shelf, OCS-A 0486

Alternative Simulation Layouts

Viewpoint MV07: View from Aquinnah Overlook, Aquinnah, Massachusetts

# ALTERNATIVE - G1 - LAYOUT SIMULATION:

## AQUINNAH OVERLOOK

### VIEWPOINT INFORMATION

County: Dukes

Town: Aquinnah

State: Massachusetts

Location: Martha's Vineyard

Coordinates: 41.34730° N, 70.83690° W

Direction of Morning/Night View:  
West-southwest (237.0°)

Direction of Sunset View:  
West-southwest (246.0°)

Distance to Nearest Visible Turbine: 14.3 Miles

### ENVIRONMENTAL DATA

Date Taken: 9/11/2021

Time: 6:37 AM

Temperature: 51°F

Humidity: 92%

Visibility: >10 miles

Conditions Observed: Fair

### CAMERA INFORMATION

Camera: Canon EOS 5D Mark IV

Resolution: 30.4 Megapixels

Lens Focal Length: 50 mm

Camera Height: 145.5 feet AMSL

### SIMULATION VIEWING INSTRUCTIONS:

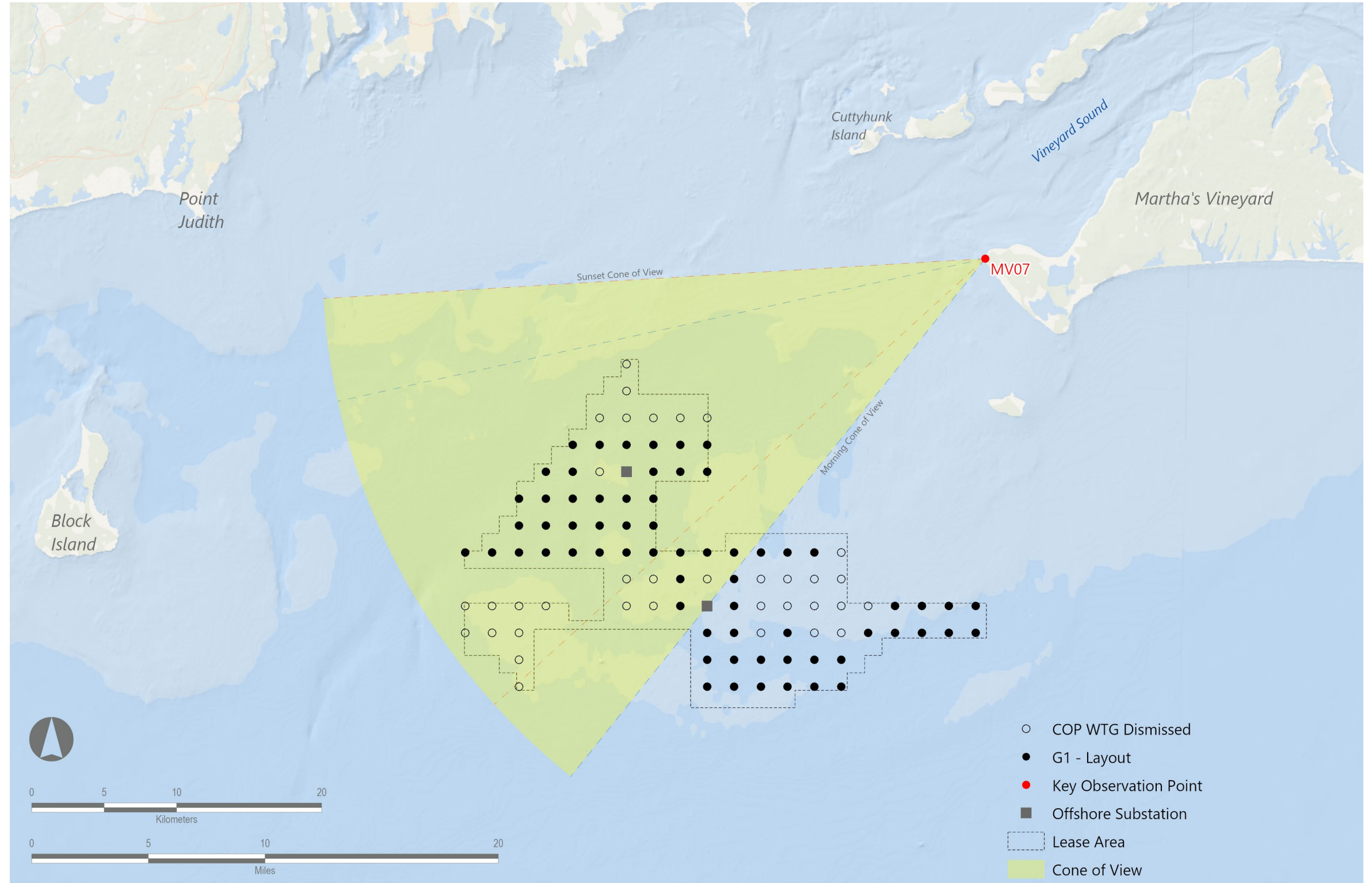
Printed at 100% the resulting simulation size is 15 inches wide by 10 inches high. At this size and focal length, the simulation should be viewed from a distance 21 inches.

### PRE-DECISIONAL

## Revolution Wind Farm

Outer Continental Shelf, OCS-A 0486

Alternative Simulation Layouts



Viewpoint MV07: View from Aquinnah Overlook, Aquinnah, Massachusetts



# ALTERNATIVE - G2 - LAYOUT SIMULATION:

## AQUINNAH OVERLOOK

### VIEWPOINT INFORMATION

County: Dukes

Town: Aquinnah

State: Massachusetts

Location: Martha's Vineyard

Coordinates: 41.34730° N, 70.83690° W

Direction of Morning/Night View:  
West-southwest (237.0°)

Direction of Sunset View:  
West-southwest (246.0°)

Distance to Nearest Visible Turbine: 14.3 Miles

### ENVIRONMENTAL DATA

Date Taken: 9/11/2021

Time: 6:37 AM

Temperature: 51°F

Humidity: 92%

Visibility: >10 miles

Conditions Observed: Fair

### CAMERA INFORMATION

Camera: Canon EOS 5D Mark IV

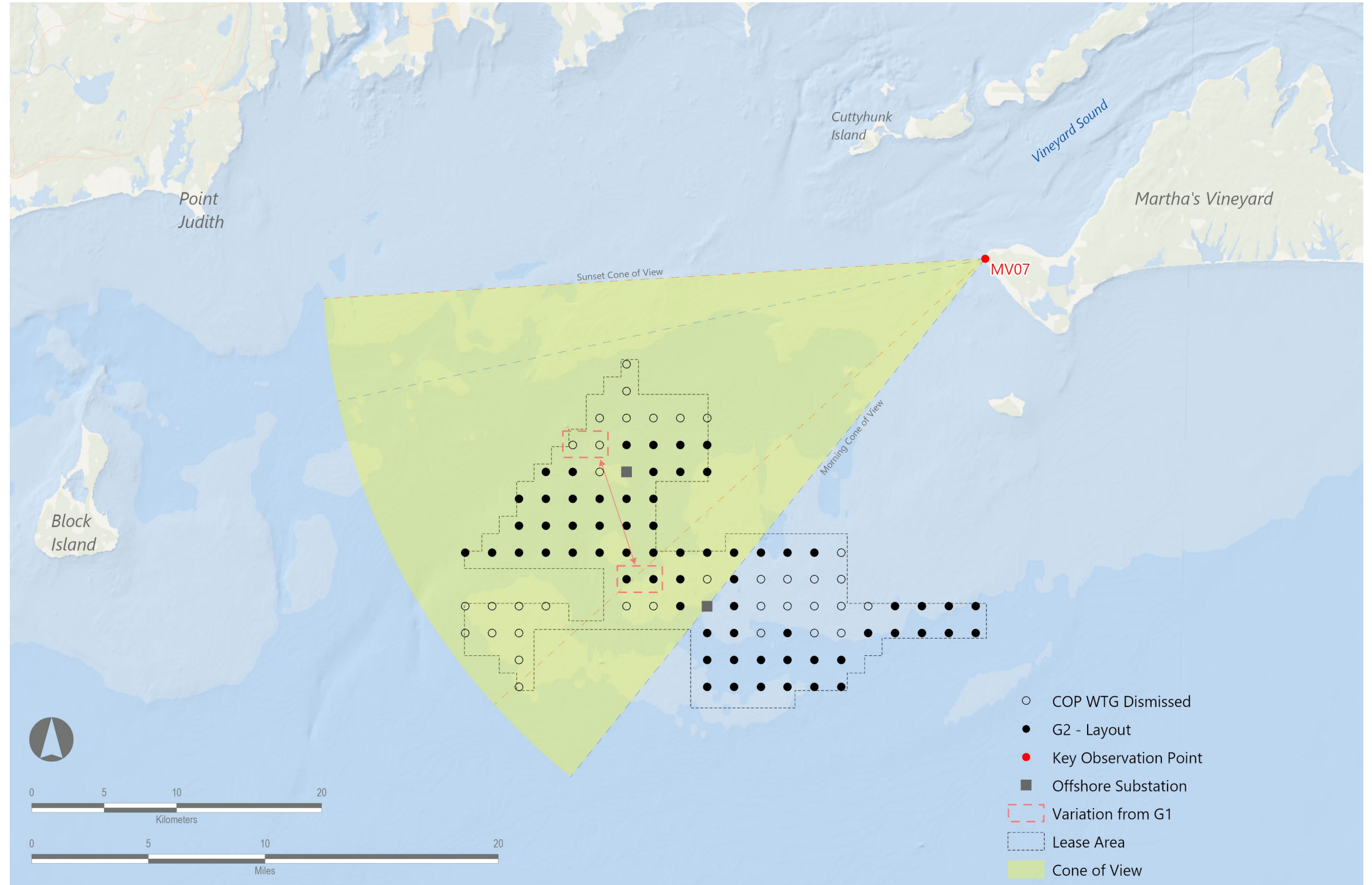
Resolution: 30.4 Megapixels

Lens Focal Length: 50 mm

Camera Height: 145.5 feet AMSL

### SIMULATION VIEWING INSTRUCTIONS:

Printed at 100% the resulting simulation size is 15 inches wide by 10 inches high. At this size and focal length, the simulation should be viewed from a distance 21 inches.



## PRE-DECISIONAL

### Revolution Wind Farm

Outer Continental Shelf, OCS-A 0486

Alternative Simulation Layouts

Viewpoint MV07: View from Aquinnah Overlook, Aquinnah, Massachusetts

# ALTERNATIVE - G3 - LAYOUT SIMULATION:

## AQUINNAH OVERLOOK

### VIEWPOINT INFORMATION

County: Dukes

Town: Aquinnah

State: Massachusetts

Location: Martha's Vineyard

Coordinates: 41.34730° N, 70.83690° W

Direction of Morning/Night View:

West-southwest (237.0°)

Direction of Sunset View:

West-southwest (246.0°)

Distance to Nearest Visible Turbine: 14.5 Miles

### ENVIRONMENTAL DATA

Date Taken: 9/11/2021

Time: 6:37 AM

Temperature: 51°F

Humidity: 92%

Visibility: >10 miles

Conditions Observed: Fair

### CAMERA INFORMATION

Camera: Canon EOS 5D Mark IV

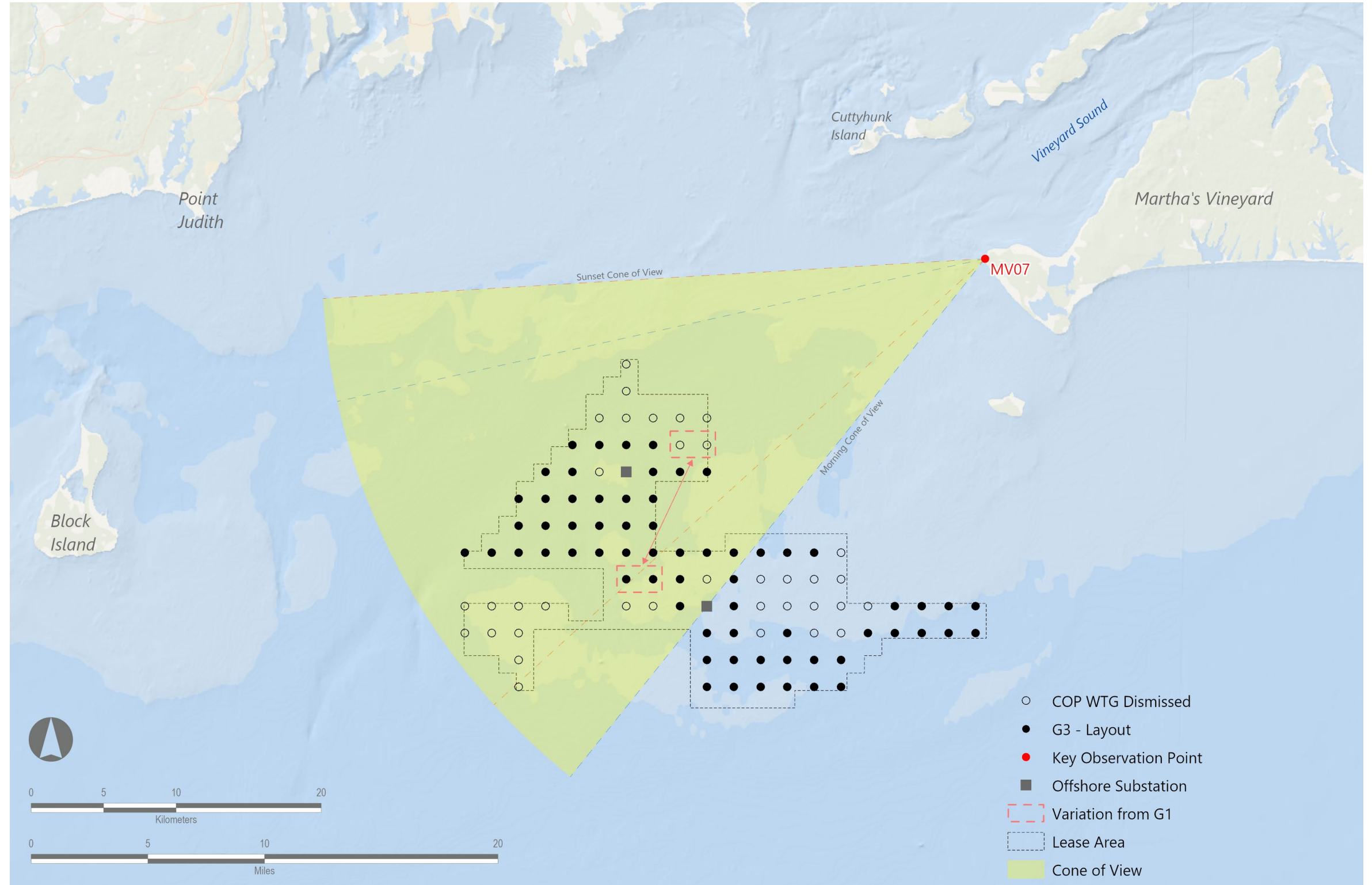
Resolution: 30.4 Megapixels

Lens Focal Length: 50 mm

Camera Height: 145.5 feet AMSL

### SIMULATION VIEWING INSTRUCTIONS:

Printed at 100% the resulting simulation size is 15 inches wide by 10 inches high. At this size and focal length, the simulation should be viewed from a distance 21 inches.



## PRE-DECISIONAL

### Revolution Wind Farm

Outer Continental Shelf, OCS-A 0486

Alternative Simulation Layouts

Viewpoint MV07: View from Aquinnah Overlook, Aquinnah, Massachusetts





COP Layout





G1 - Layout





G2 - Layout





G3 - Layout





COP Layout





G1 - Layout





G2 - Layout





G3 - Layout



COP Layout





G1 - Layout





# ALTERNATIVE - G1 - LAYOUT SIMULATION:

## AQUINNAH OVERLOOK

### VIEWPOINT INFORMATION

County: Dukes  
Town: Aquinnah  
State: Massachusetts  
Location: Martha's Vineyard  
Coordinates: 41.34730° N, 70.83690° W  
Direction of Morning/Night View:  
West-southwest (237.0°)  
Direction of Sunset View:  
West-southwest (246.0°)  
Distance to Nearest Visible Turbine: 14.3 Miles

### ENVIRONMENTAL DATA

Date Taken: 9/11/2021  
Time: 6:37 AM  
Temperature: 51°F  
Humidity: 92%  
Visibility: >10 miles  
Conditions Observed: Fair

### CAMERA INFORMATION

Camera: Canon EOS 5D Mark IV  
Resolution: 30.4 Megapixels  
Lens Focal Length: 50 mm  
Camera Height: 145.5 feet AMSL

### SIMULATION VIEWING INSTRUCTIONS:

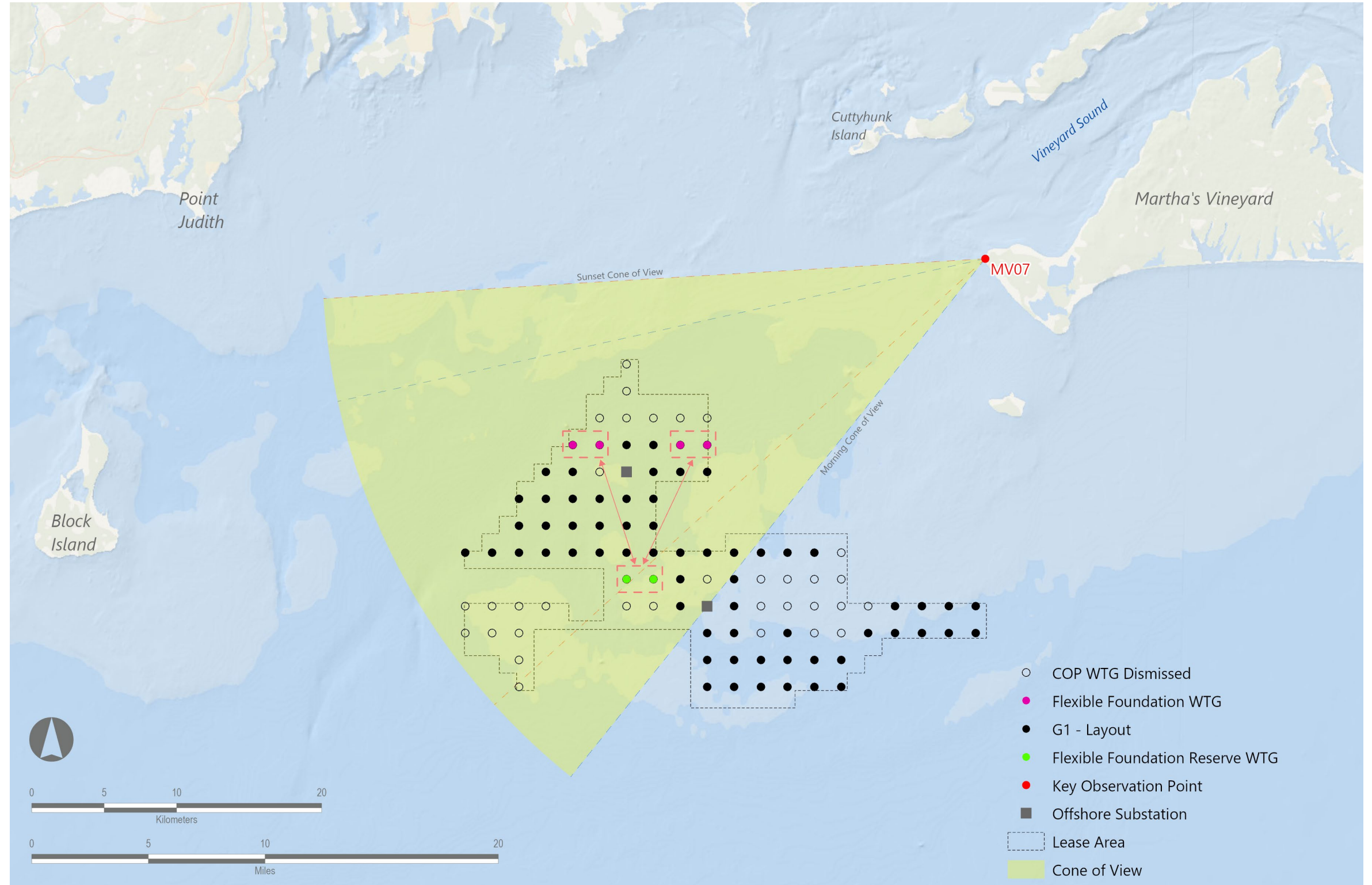
Printed at 100% the resulting simulation size is 15 inches wide by 10 inches high. At this size and focal length, the simulation should be viewed from a distance 21 inches.

## PRE-DECISIONAL

### Revolution Wind Farm

Outer Continental Shelf, OCS-A 0486

Alternative Simulation Layouts



Viewpoint MV07: View from Aquinnah Overlook, Aquinnah, Massachusetts





G1 - Layout