

ORIGINAL COP LAYOUT SIMULATION:

THE BREAKERS - LAWN

VIEWPOINT INFORMATION

County: Newport
Town: Newport
State: Rhode Island
Location: 44 Ochre Point Avenue
Coordinates: 41.46973° N, 71.29770° W
Direction of View: South-southeast (156.5°)
Distance to Nearest Visible Turbine: 15.9 miles

ENVIRONMENTAL DATA

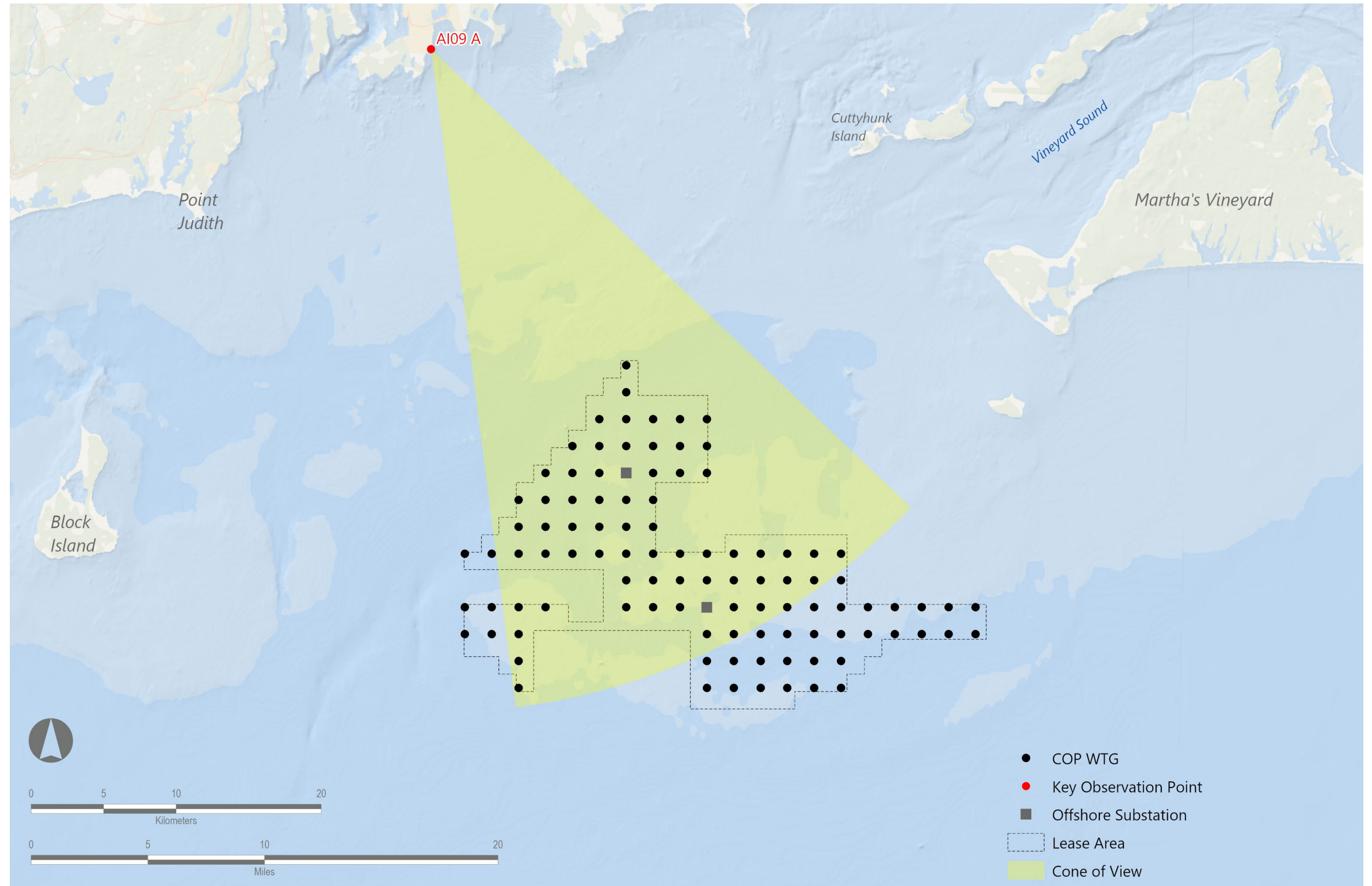
Date Taken: 9/14/2022
Time: 8:21 AM
Temperature: 66°F
Humidity: 68%
Visibility: >10 miles
Conditions Observed: Fair

CAMERA INFORMATION

Camera: Canon EOS 5D Mark IV
Resolution: 30.4 Megapixels
Lens Focal Length: 50 mm
Camera Height: 50.2 feet AMSL

SIMULATION VIEWING INSTRUCTIONS:

Printed at 100% the resulting simulation size is 15 inches wide by 10 inches high. At this size and focal length, the simulation should be viewed from a distance 21 inches.



PRE-DECISIONAL

Revolution Wind Farm

Outer Continental Shelf, OCS-A 0486

Alternative Simulation Layouts

Viewpoint AI09A: View from The Breakers, Newport, Rhode Island

ALTERNATIVE - G1 - LAYOUT SIMULATION:

THE BREAKERS - LAWN

VIEWPOINT INFORMATION

County: Newport

Town: Newport

State: Rhode Island

Location: 44 Ochre Point Avenue

Coordinates: 41.46973° N, 71.29770° W

Direction of View: South-southeast (156.5°)

Distance to Nearest Visible Turbine: 18.0 miles

ENVIRONMENTAL DATA

Date Taken: 9/14/2022

Time: 8:21 AM

Temperature: 66°F

Humidity: 68%

Visibility: >10 miles

Conditions Observed: Fair

CAMERA INFORMATION

Camera: Canon EOS 5D Mark IV

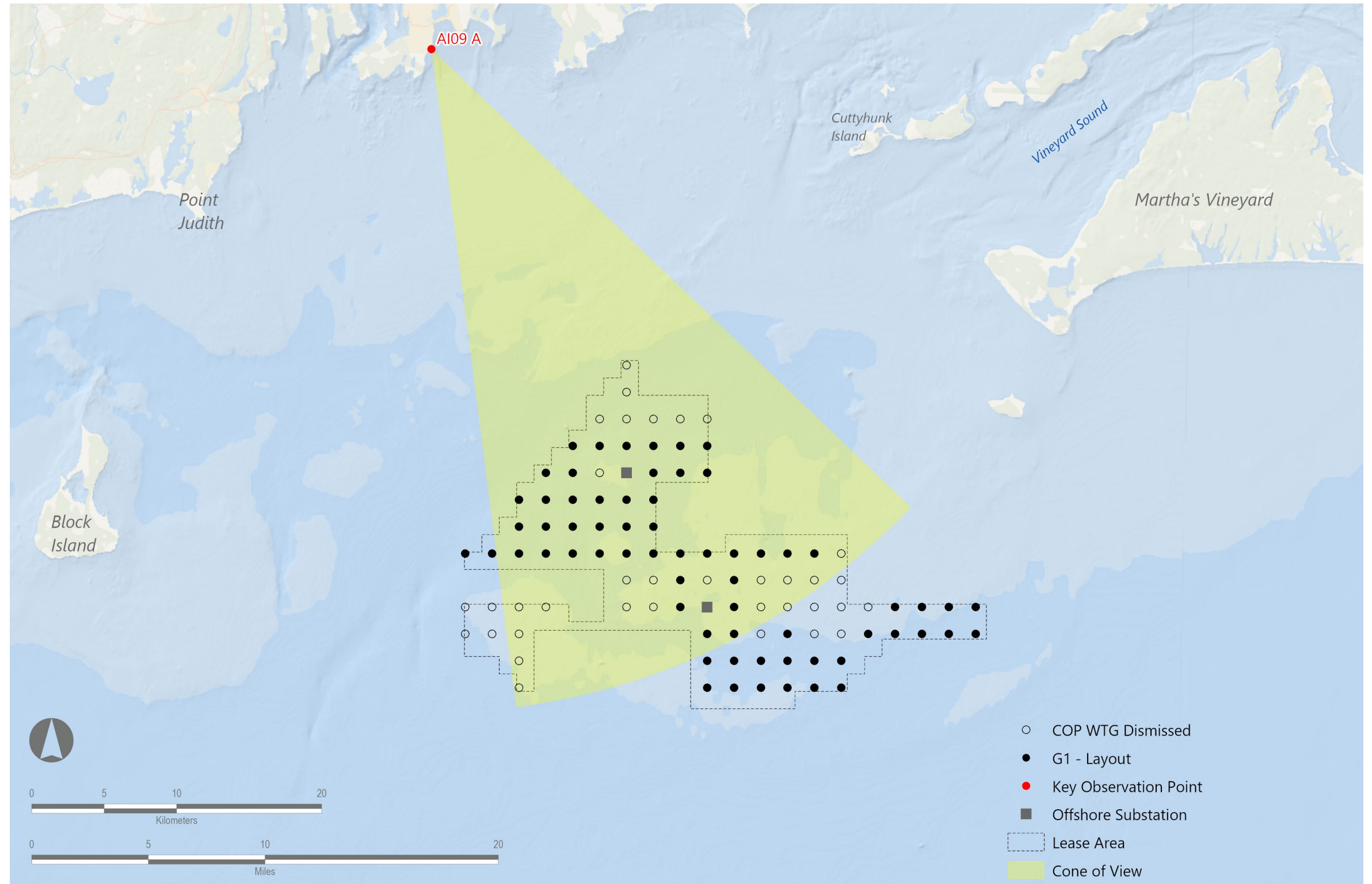
Resolution: 30.4 Megapixels

Lens Focal Length: 50 mm

Camera Height: 50.2 feet AMSL

SIMULATION VIEWING INSTRUCTIONS:

Printed at 100% the resulting simulation size is 15 inches wide by 10 inches high. At this size and focal length, the simulation should be viewed from a distance 21 inches.



PRE-DECISIONAL

Revolution Wind Farm

Outer Continental Shelf, OCS-A 0486

Alternative Simulation Layouts

Viewpoint AI09A: View from The Breakers, Newport, Rhode Island

ALTERNATIVE - G2 - LAYOUT SIMULATION:

THE BREAKERS - LAWN

VIEWPOINT INFORMATION

County: Newport
Town: Newport
State: Rhode Island
Location: 44 Ochre Point Avenue
Coordinates: 41.46973° N, 71.29770° W
Direction of View: South-southeast (156.5°)
Distance to Nearest Visible Turbine: 18.8 miles

ENVIRONMENTAL DATA

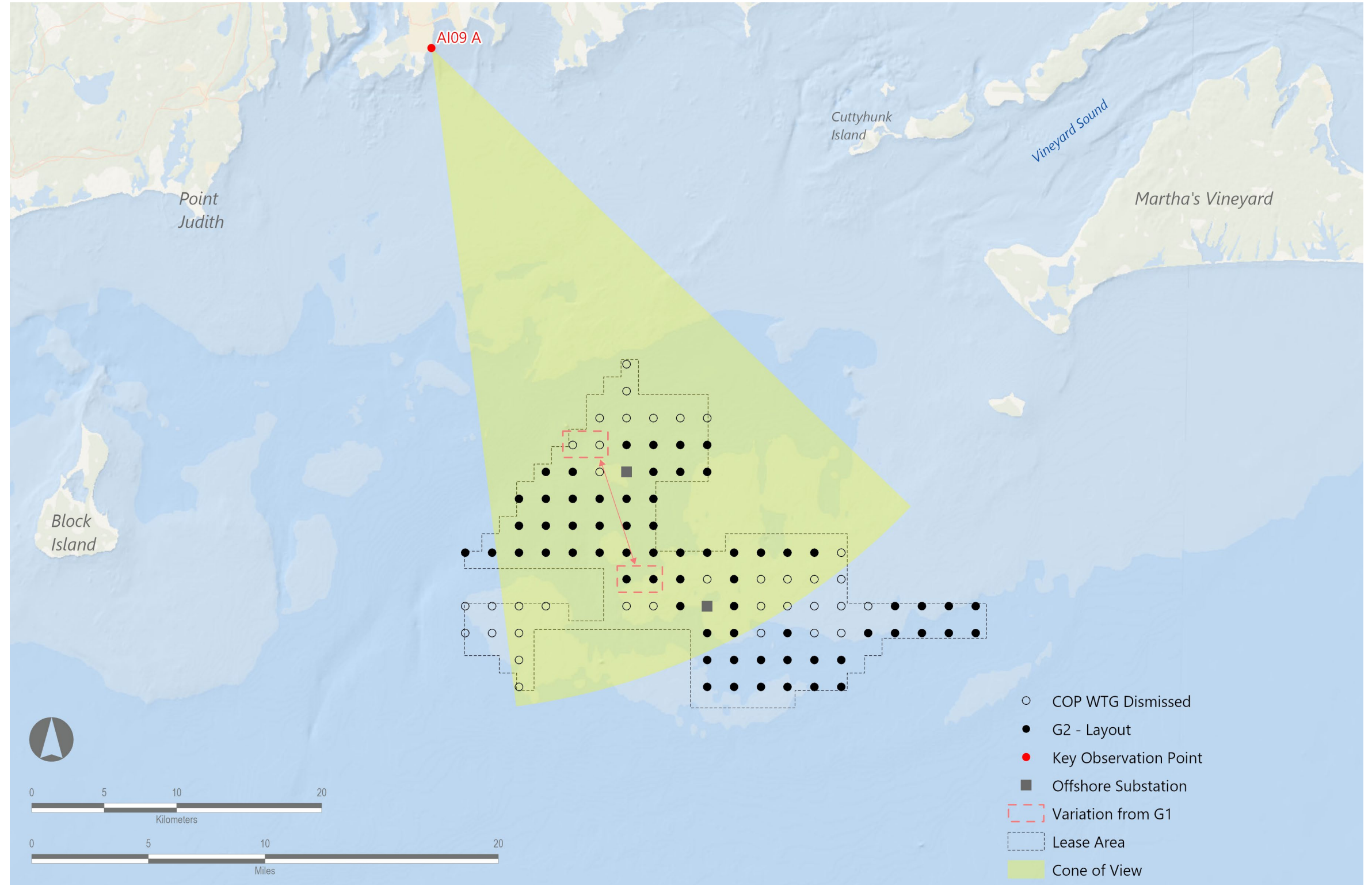
Date Taken: 9/14/2022
Time: 8:21 AM
Temperature: 66°F
Humidity: 68%
Visibility: >10 miles
Conditions Observed: Fair

CAMERA INFORMATION

Camera: Canon EOS 5D Mark IV
Resolution: 30.4 Megapixels
Lens Focal Length: 50 mm
Camera Height: 50.2 feet AMSL

SIMULATION VIEWING INSTRUCTIONS:

Printed at 100% the resulting simulation size is 15 inches wide by 10 inches high. At this size and focal length, the simulation should be viewed from a distance 21 inches.



PRE-DECISIONAL

Revolution Wind Farm

Outer Continental Shelf, OCS-A 0486

Alternative Simulation Layouts

Viewpoint AI09A: View from The Breakers, Newport, Rhode Island

ALTERNATIVE - G3 - LAYOUT SIMULATION:

THE BREAKERS - LAWN

VIEWPOINT INFORMATION

County: Newport
Town: Newport
State: Rhode Island
Location: 44 Ochre Point Avenue
Coordinates: 41.46973° N, 71.29770° W
Direction of View: South-southeast (156.5°)
Distance to Nearest Visible Turbine: 18.0 miles

ENVIRONMENTAL DATA

Date Taken: 9/14/2022
Time: 8:21 AM
Temperature: 66°F
Humidity: 68%
Visibility: >10 miles
Conditions Observed: Fair

CAMERA INFORMATION

Camera: Canon EOS 5D Mark IV
Resolution: 30.4 Megapixels
Lens Focal Length: 50 mm
Camera Height: 50.2 feet AMSL

SIMULATION VIEWING INSTRUCTIONS:

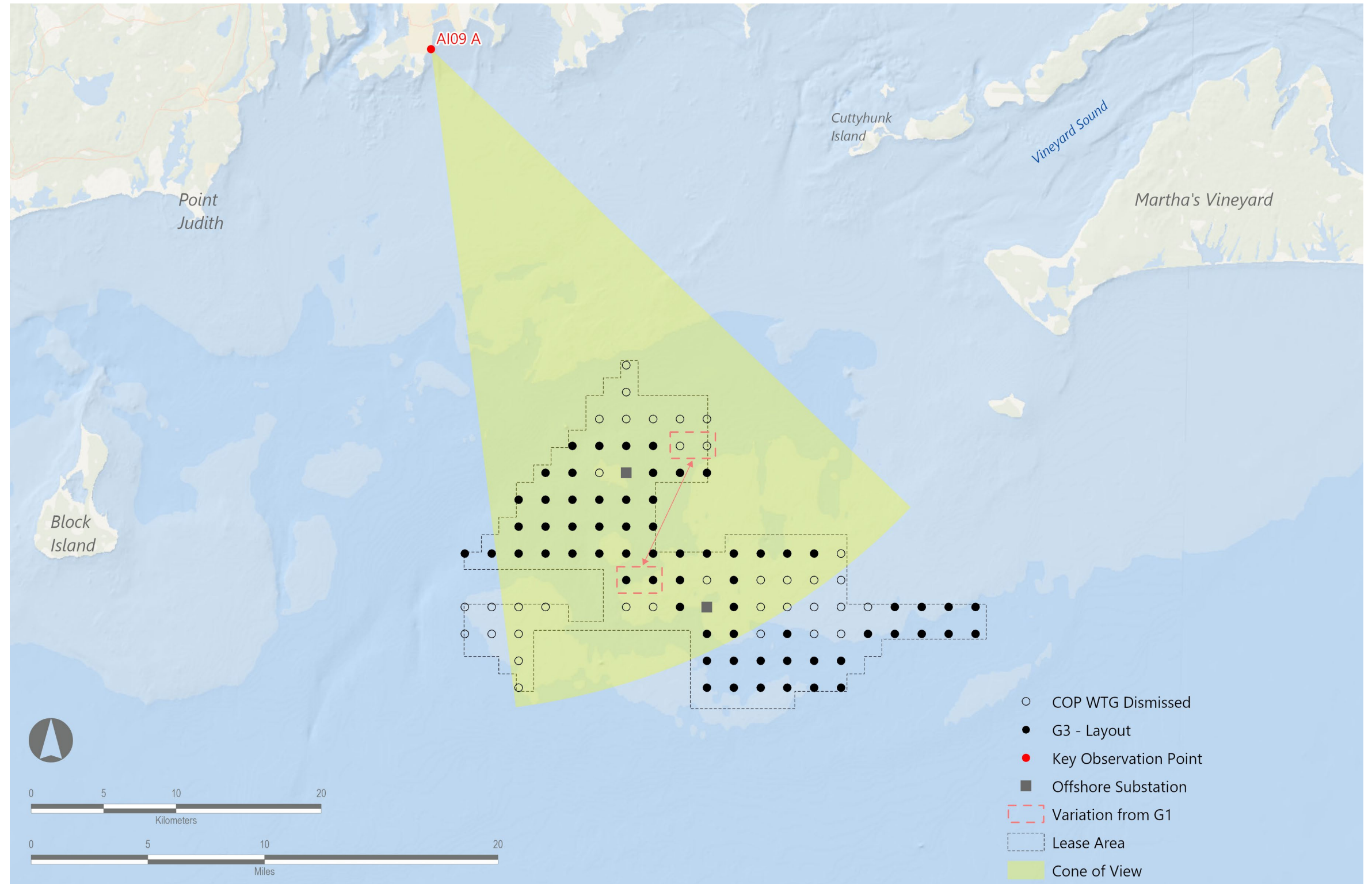
Printed at 100% the resulting simulation size is 15 inches wide by 10 inches high. At this size and focal length, the simulation should be viewed from a distance 21 inches.

PRE-DECISIONAL

Revolution Wind Farm

Outer Continental Shelf, OCS-A 0486

Alternative Simulation Layouts



Viewpoint AI09A: View from The Breakers, Newport, Rhode Island



COP Layout



G1 - Layout



G2 - Layout



G3 - Layout

ALTERNATIVE - G1 - LAYOUT SIMULATION:

THE BREAKERS - LAWN

VIEWPOINT INFORMATION

County: Newport
Town: Newport
State: Rhode Island
Location: 44 Ochre Point Avenue
Coordinates: 41.46973° N, 71.29770° W
Direction of View: South-southeast (156.5°)
Distance to Nearest Visible Turbine: 18.0 miles

ENVIRONMENTAL DATA

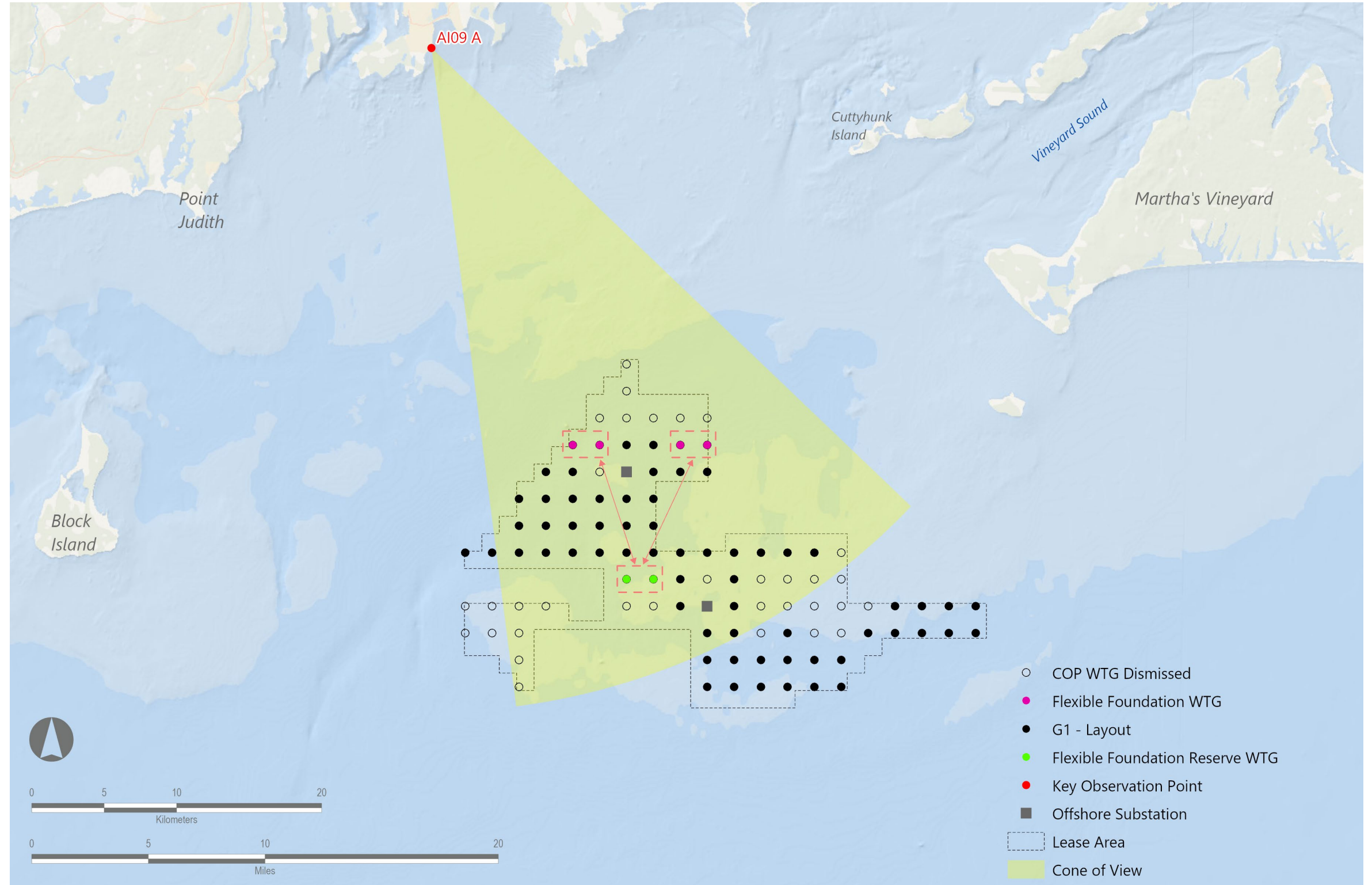
Date Taken: 9/14/2022
Time: 8:21 AM
Temperature: 66°F
Humidity: 68%
Visibility: >10 miles
Conditions Observed: Fair

CAMERA INFORMATION

Camera: Canon EOS 5D Mark IV
Resolution: 30.4 Megapixels
Lens Focal Length: 50 mm
Camera Height: 50.2 feet AMSL

SIMULATION VIEWING INSTRUCTIONS:

Printed at 100% the resulting simulation size is 15 inches wide by 10 inches high. At this size and focal length, the simulation should be viewed from a distance 21 inches.



PRE-DECISIONAL

Revolution Wind Farm

Outer Continental Shelf, OCS-A 0486
Alternative Simulation Layouts



G1 - Layout