

National Historic Preservation Act

What is Section 106 of the National Historic Preservation Act?

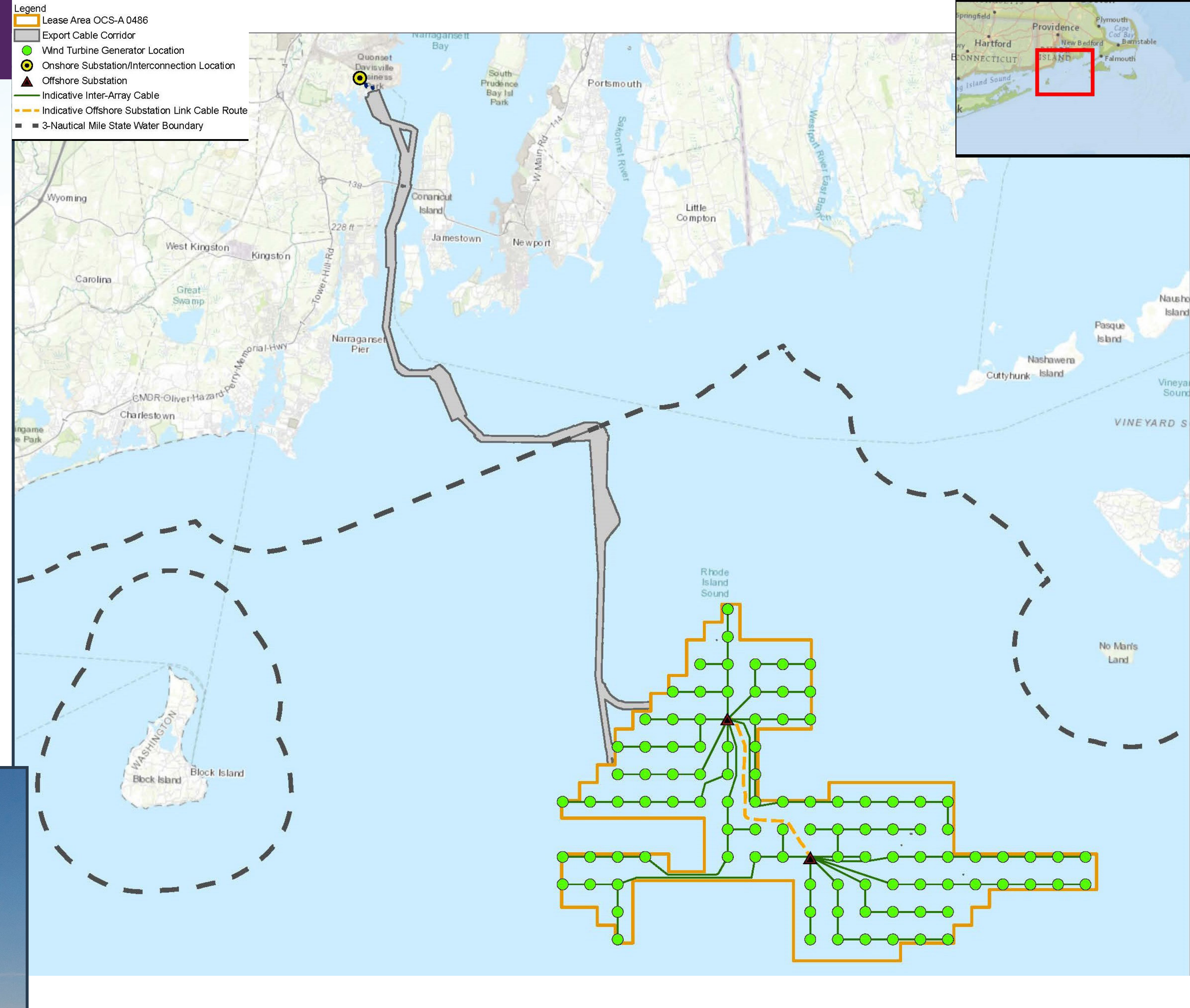
A regulation requiring Federal agencies to consider effects of undertakings on historic properties.

What does it do?

- Establish Area of Potential Effect (APE).
- Identify Historic Properties (listed or eligible for National Register listing).
- Assess project effects on historic properties.
- Resolve adverse effects (avoid, minimize, or mitigate).

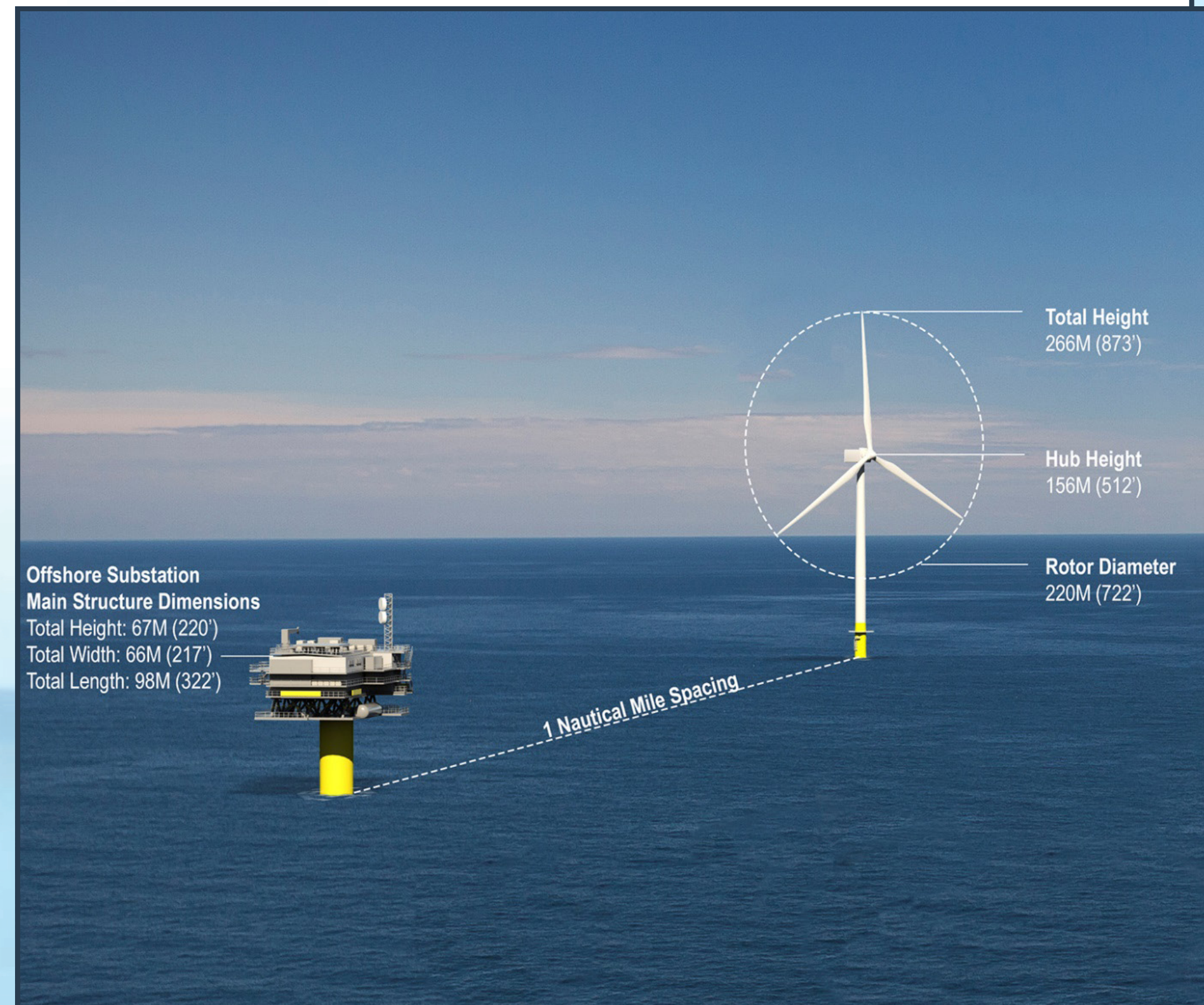
What are the National Register Eligibility Criteria?

- Associated with significant historical events.
- Associated with the lives of persons significant in our past.
- Embody distinctive style, period, method of construction, or represent work of a master or possess high artistic values, or represent a district with components that may lack individual distinction.
- Properties that have yielded or may be likely to yield important information in history of prehistory.



(Images from Revolution Wind, LLC)

Project Location Map



Indicative Image of an Offshore Turbine and Substation

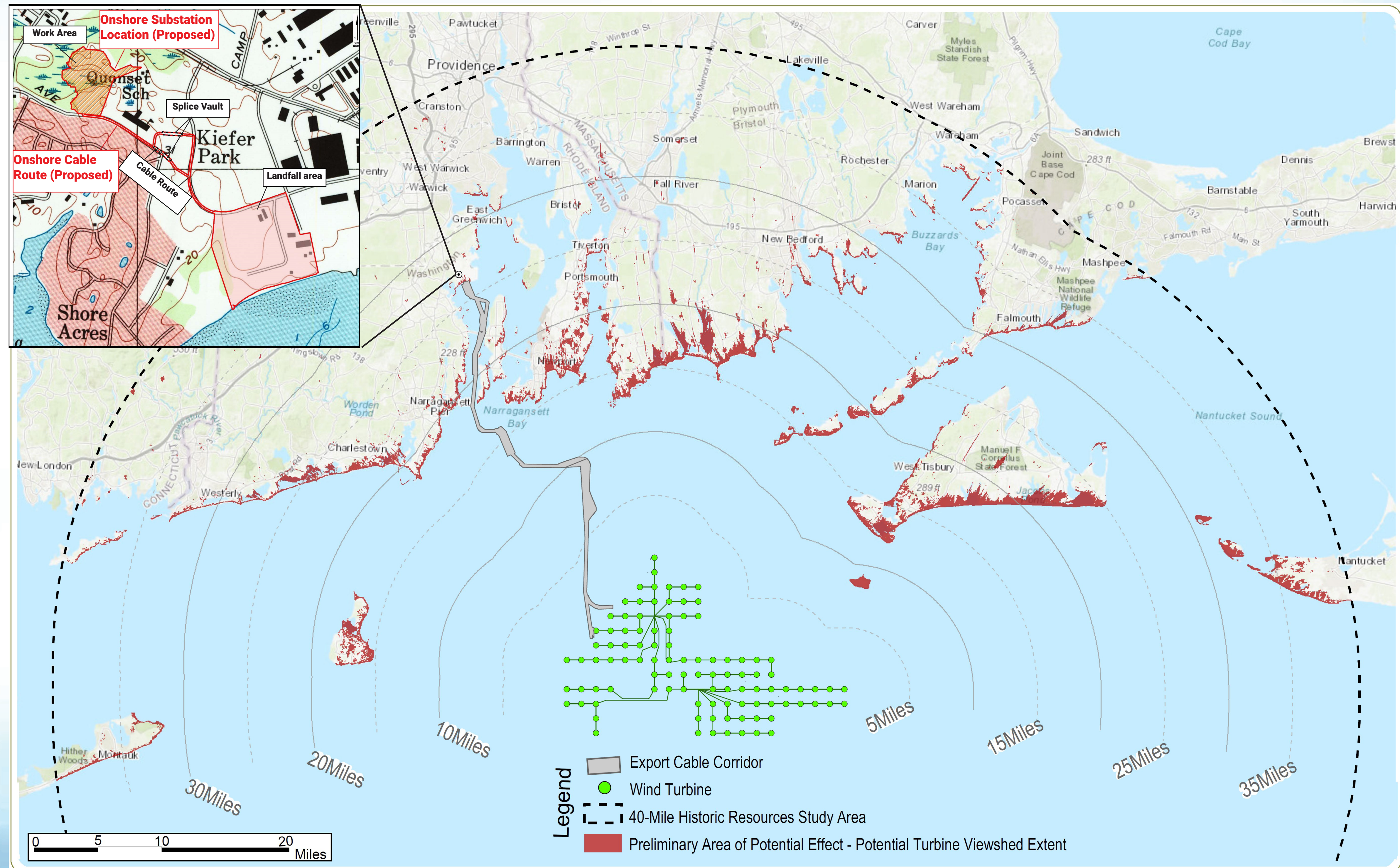
National Historic Preservation Act

What is the Area of Potential Effect (APE) for the Revolution Wind Project?

BOEM needs your input. Do you know of historic properties (Buildings, Structures, Objects, Archaeological Sites, Districts, Landscape, Traditional Cultural Properties) that may be affected by this project?

This project has three categories of APE:

- 1. Terrestrial:** Underground cable routes onshore and substation locations
- 2. Marine:** Seafloor wind turbine locations and cable routes to shore
- 3. Visual for Historic Resources:** Views of project from historic resources both onshore and offshore



(Image from Revolution Wind, LLC / EDR)

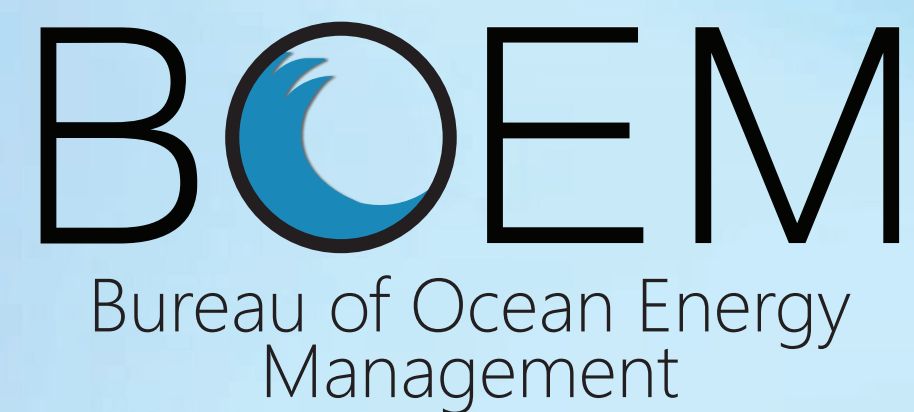
Offshore Infrastructure Preliminary APE

National Historic Preservation Act

What is the Area of Potential Effect (APE) for Revolution Wind?

Example vista toward the offshore wind farm area as viewed from Gay Head Light, Aquinnah, MA.

For more information on BOEM's Renewable Energy Program, visit www.boem.gov/Renewable-Energy



(Image from Revolution Wind, LLC / EDR)

Simulation of Offshore Turbines as Viewed Southwest from Gay Head Light, Aquinnah, MA.