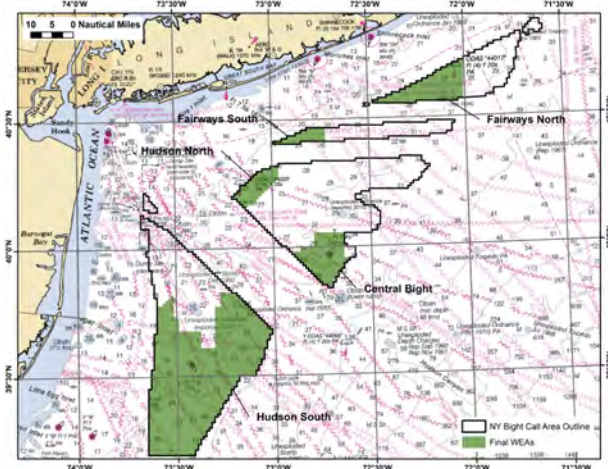




**NOAA  
FISHERIES**

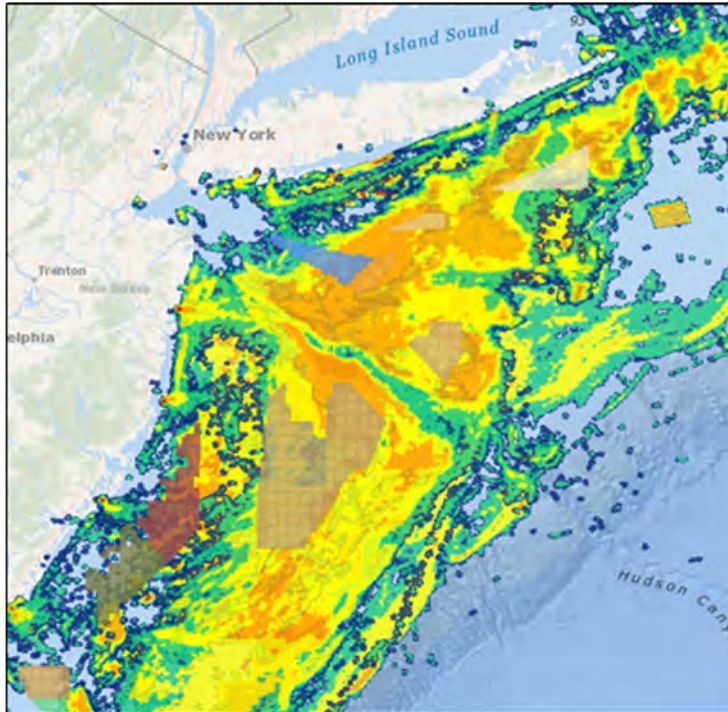
# New York Bight Wind Energy Areas: Information to Consider

**Sue Tuxbury**  
**Wind Program Coordinator**  
New York Bight Task Force Meeting  
April 14 & 16, 2021



# Fisheries

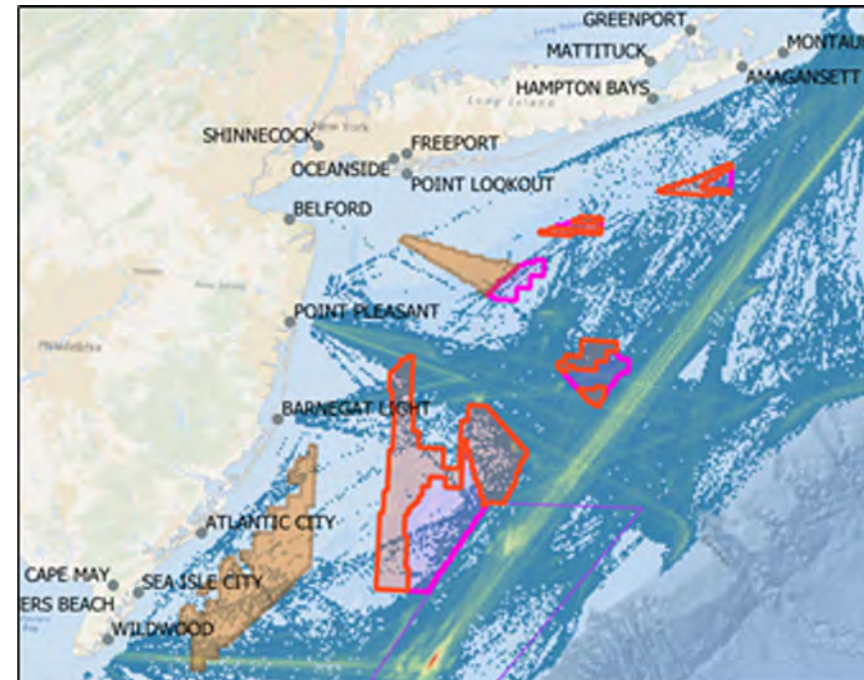
## Scallop and Surfclam Fishing 2011-2016



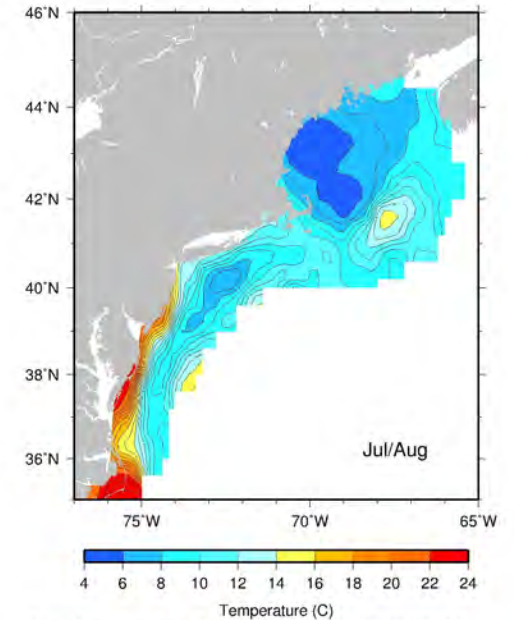
- Transit lanes should reflect data/input
- Consult 2019 RODA/NYSERDA report



VMS positions 2018



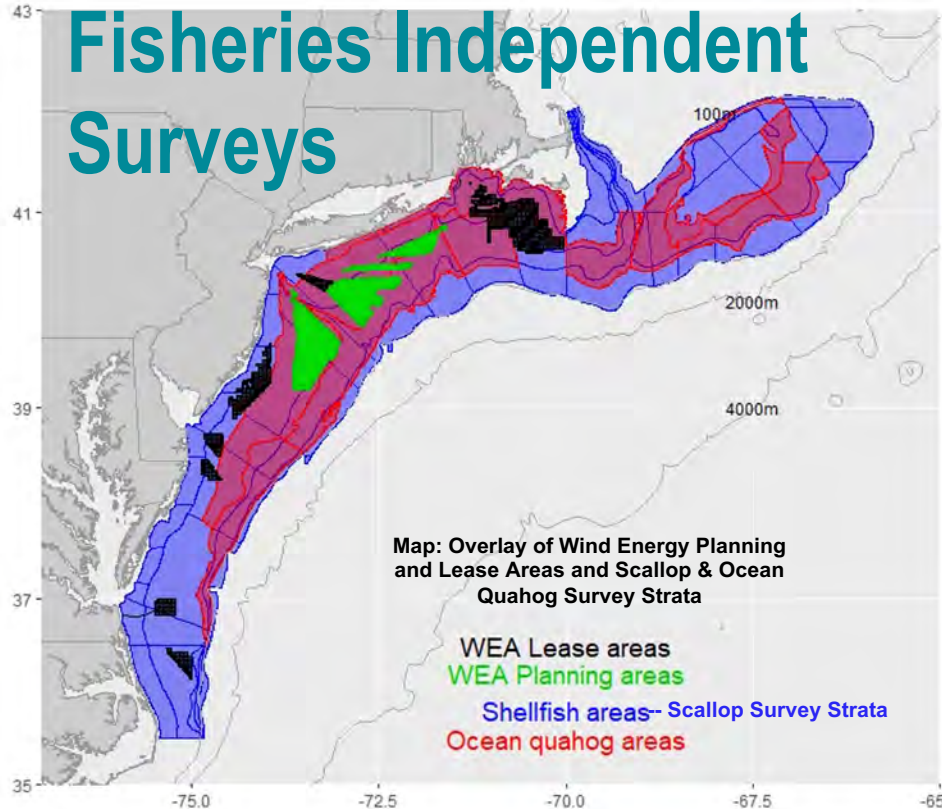
# Protected Species and Habitat



Average bottom temperature distribution on the Northeast U.S. Shelf for July - August. The Mid-Atlantic Bight Cold Pool is visible as the isolated cold water mass with the coldest waters (< 7°C) centered near 40°N, 72.5°W.



# Offshore Wind & Fisheries Independent Surveys



Survey	Year Started	Survey Design	Major Applications
Autumn Bottom Trawl Survey	1963	Random Stratified Design - North Carolina to Nova Scotia (bottom trawl)	abundance; length, age, sex, weight, diet, maturity samples, distribution, EcoMon
Spring Bottom Trawl Survey	1968	Random Stratified Design - North Carolina to Nova Scotia (bottom trawl)	abundance; length, age, sex, weight, diet, maturity samples, distribution, components of Ecosystem Monitoring survey
Scallop Survey	1979	Random Stratified Design (dredge); line transect (HabCam)	biomass, abundance, distribution, size and sex of sea scallops and other benthic fauna
Atlantic Surfclam and Ocean Quahog Surveys	1980	Random Stratified Design (hydraulic dredge)	biomass, abundance, distribution, size and sex of Atlantic surfclam and ocean quahog
Northern Shrimp Survey	1983	Random Stratified Design (commercial shrimp trawl)	biomass, abundance, length
Gulf of Maine Cooperative Bottom Longline Survey	2014	Randomly Stratified Design (bottom longline)	abundance, biomass, length, age, sex, weight, maturity samples, distribution, habitat data
Ecosystem Monitoring Survey	1977	Random Stratified Design (linked to Trawl Survey Design); fixed stations embedded in design (plankton and oceanographic sampling)	Phyto/nkton, zooplankton, ichthyoplankton, carbonate chemistry, nutrients, marine mammals, sea birds
North Atlantic Right Whale Aerial Surveys	1998	Aerial line transects	Right Whale population estimates; dynamic area management
Marine mammal and sea turtle ship-based and aerial surveys	1991	Line transects for ship and aerial surveys. biological and physical oceanography sampling	Abundance and spatial distribution of marine mammals, sea turtles, and sea birds
Large Coastal Shark Bottom Long-line Survey	1986	Fixed station design in US continental shelf waters from FI to DE with stations ~ 30 nm apart	Abund., distribution, migrations (tagging), and bio-sampling for assessment, EFH designations, and life history studies
Coop. Atlantic States Shark Pupping and Nursery Longline/Gillnet Survey	1998	Random stratified and fixed station (longline and gillnet) surveys in estuarine and nearshore waters from Florida to Delaware	Abundance, distribution, migrations (tagging), and bio-sampling for assessment, EFH, and life history studies

Represents 294 Years of Total Survey Effort  
 Contributing \$27B/year commercial fisheries & \$6.5B recreational fisheries (NMFS, 2018)