



# U.S. Outer Continental Shelf Renewable Energy: Overview of Leasing Process

---

Meredith Lilley, Energy Program Specialist  
*Office of Renewable Energy Programs*

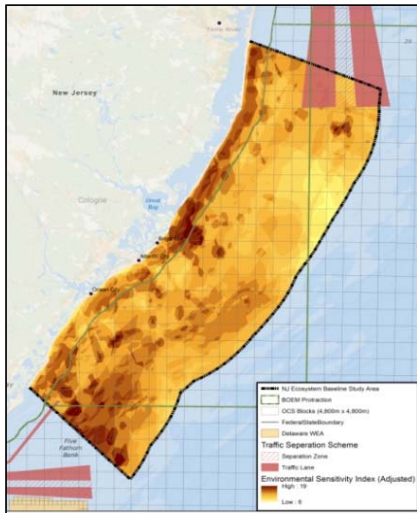
**Gulf of Maine Intergovernmental Renewable Energy Task Force Meeting**

December 12, 2019 | Durham, New Hampshire



# OCS Renewable Energy Authorization Process

Planning  
& Analysis



Leasing



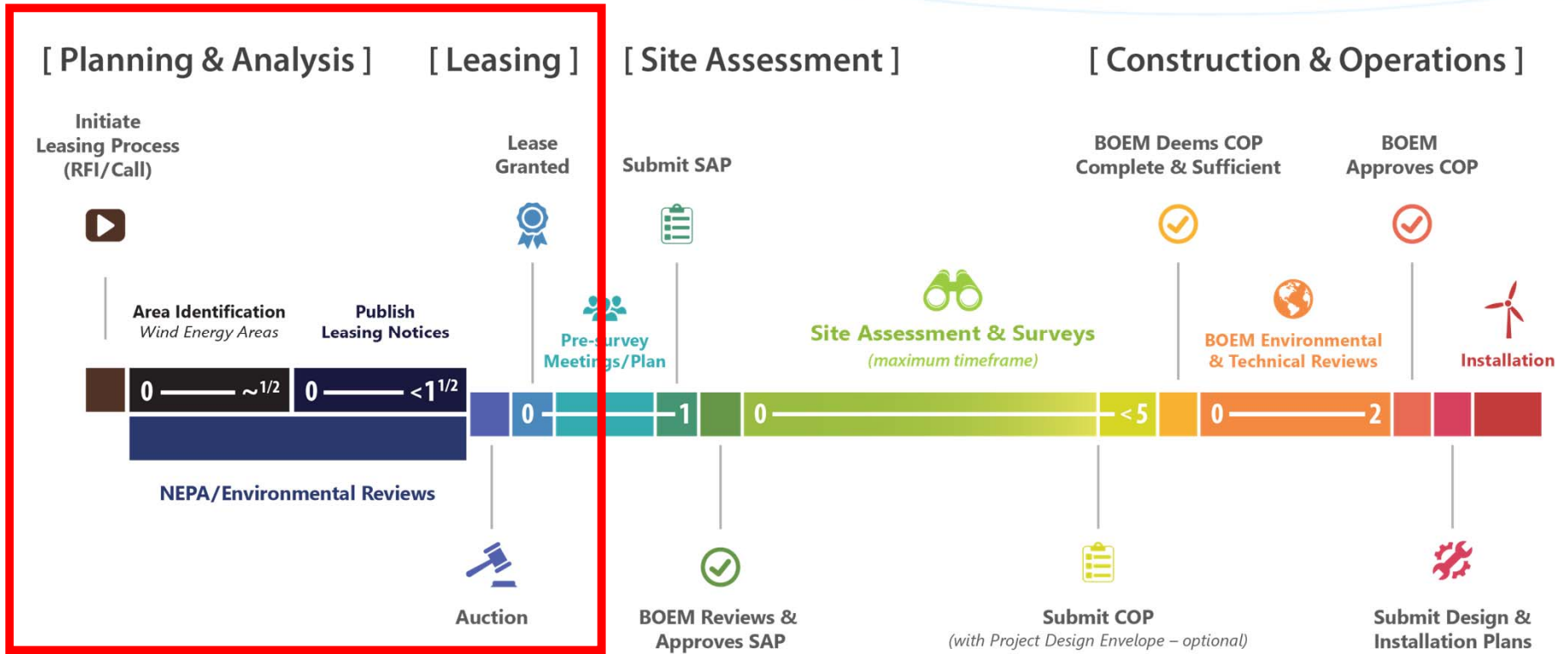
Site Assessment



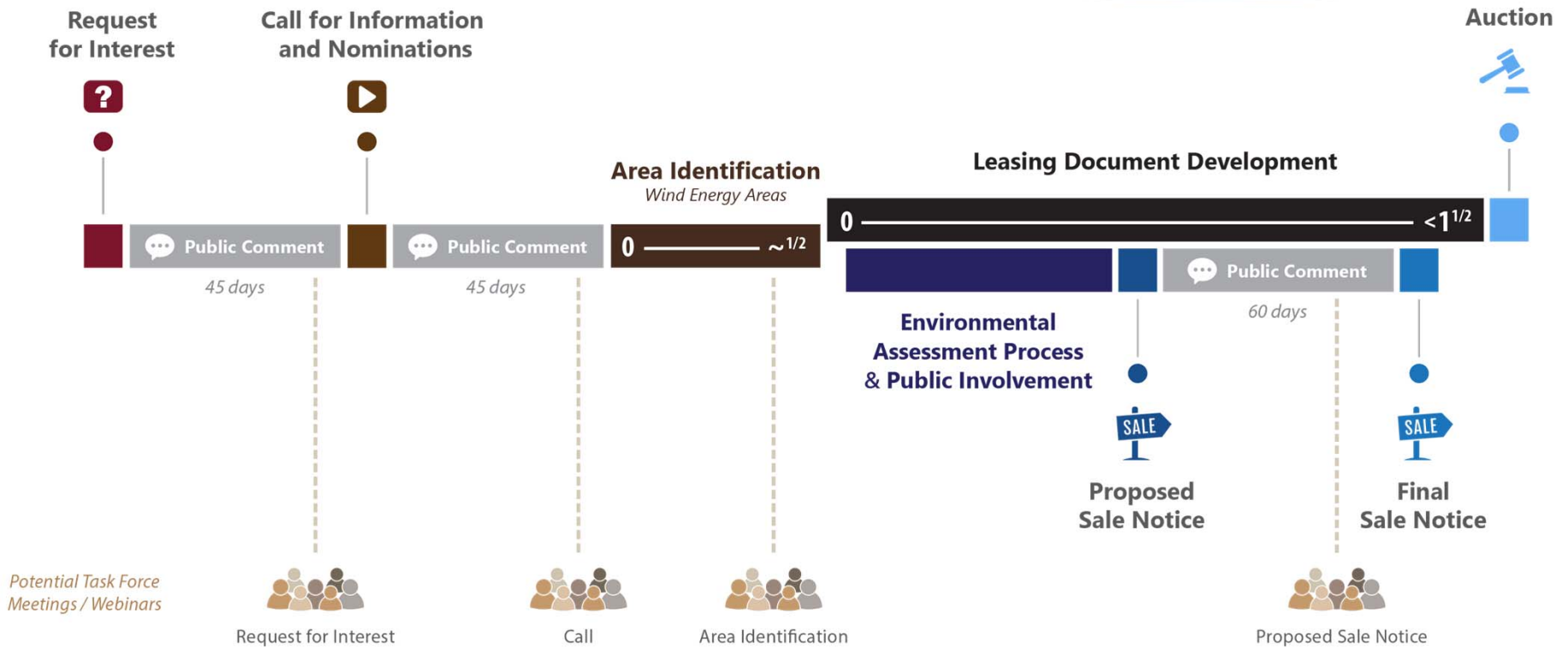
Construction  
& Operations



# Renewable Energy Process: From RFI/Call to Operation

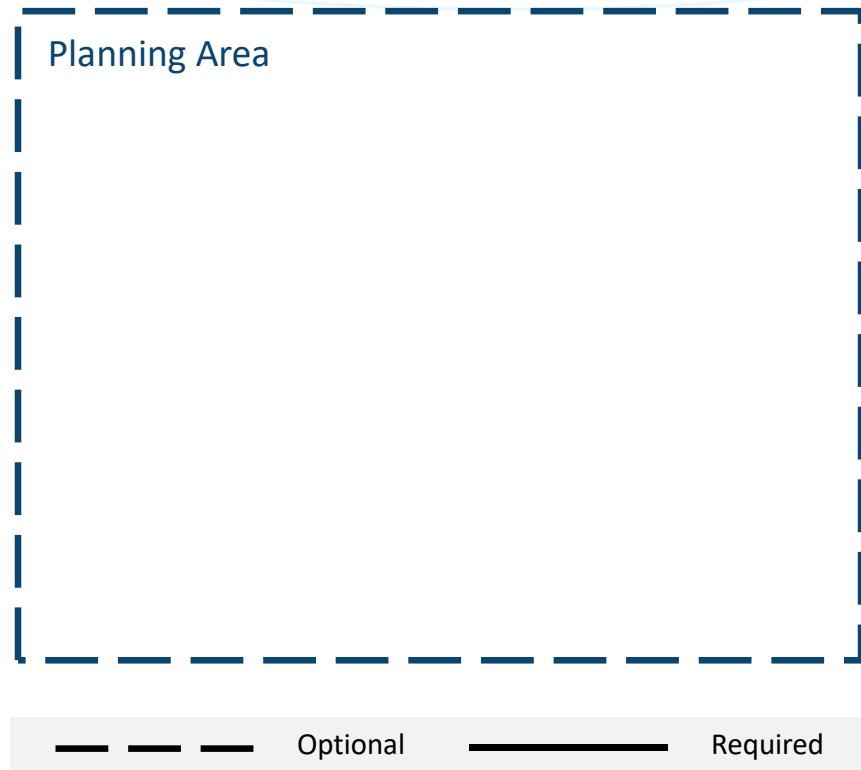


# Request for Interest to Lease Sale



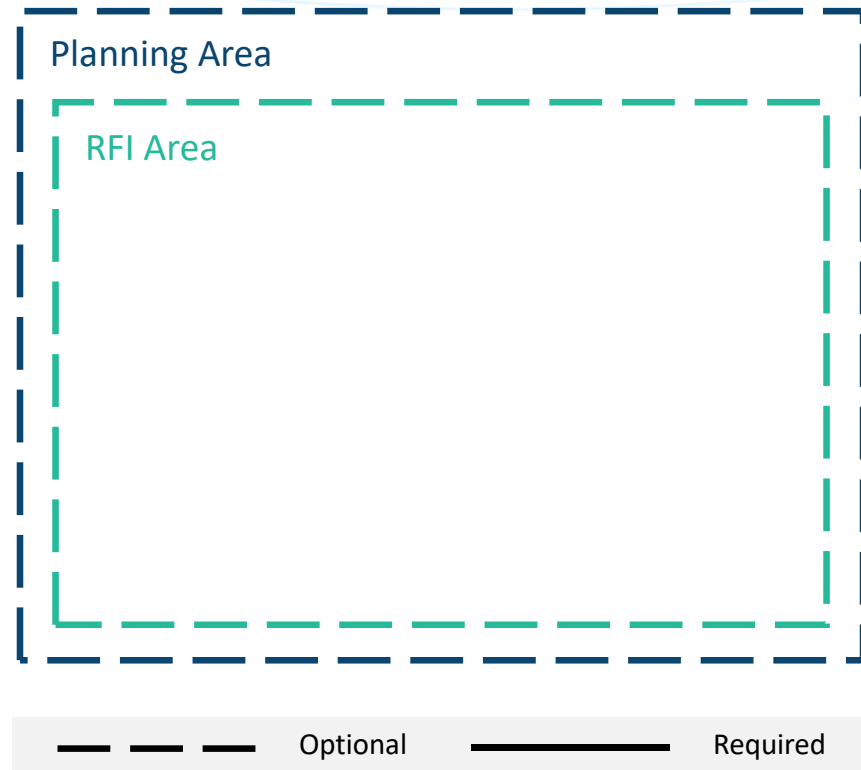
# Planning Area

- High-level screening
- Initial identification of areas that may be suitable for potential offshore wind development



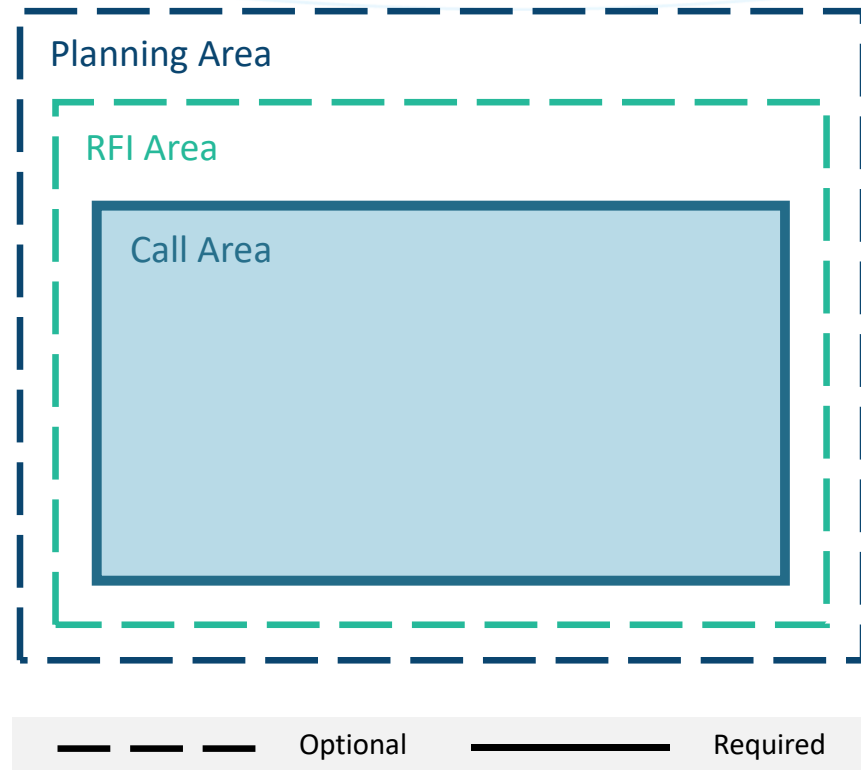
## Request for Interest (RFI) Area

- Collect information to determine the level of interest in offshore wind leasing
- Shed more light on suitability of area for wind development



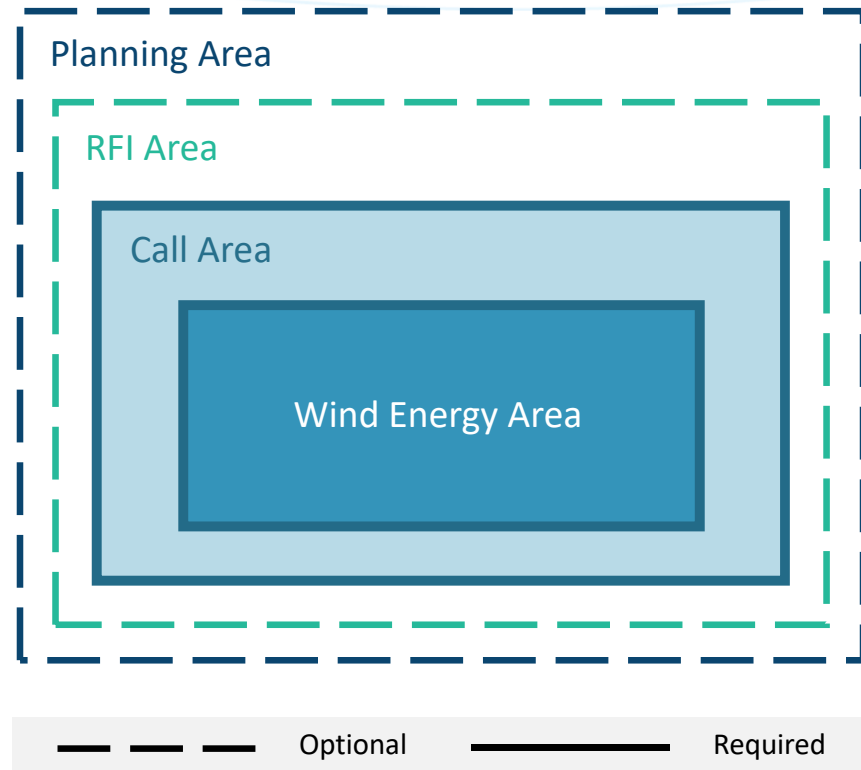
# Call for Information and Nominations - Area

- Request comments on:
  - Areas for special consideration and analysis
  - Conditions in the Call Area
  - Areas to be considered for leasing



# Wind Energy Area

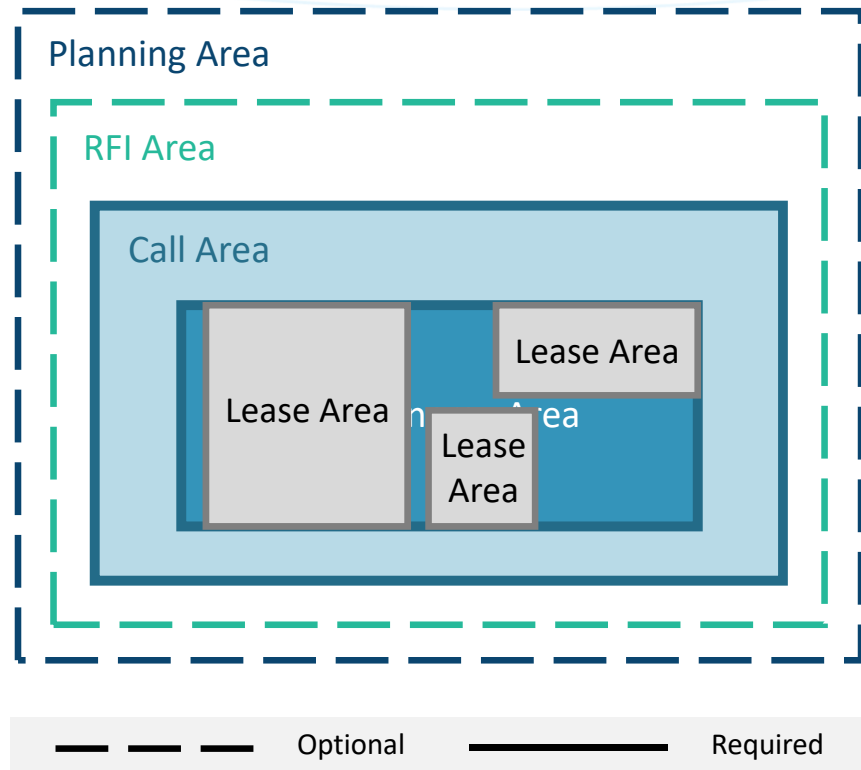
- A portion of the Outer Continental Shelf (OCS) identified by BOEM for NEPA analysis (Environmental Assessment)
- The basis for a Lease Area



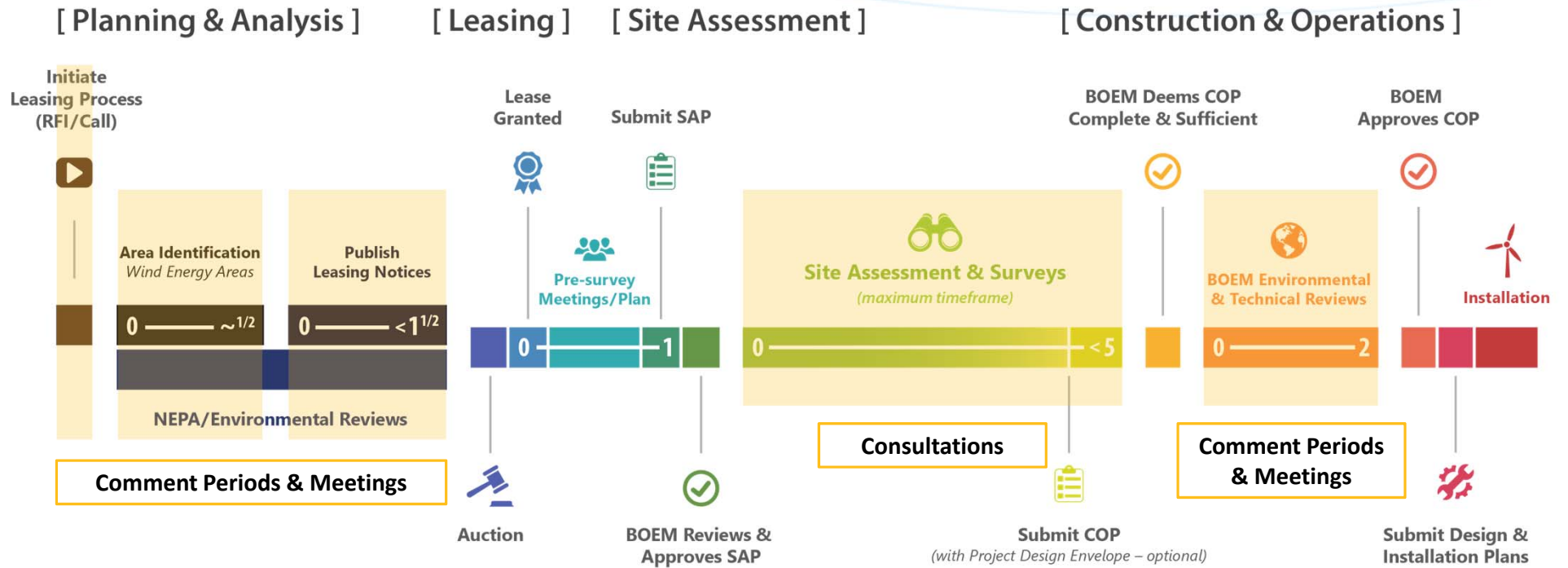


# Lease Areas

- Wind Energy Areas have the potential for further division into Lease Areas



# How is Input Collected?



# BOEM

Bureau of Ocean Energy Management  
U.S. Department of the Interior

BOEM.gov



Meredith Lilley | [meredith.lilley@boem.gov](mailto:meredith.lilley@boem.gov) | +1-703-787-1037

