



# United States Coast Guard Office of Navigation Systems



## OFFSHORE WIND JURISDICTIONAL AUTHORITIES: WHO IS THE COAST GUARD AND WHAT DO WE DO?

**Gulf of Mexico Task Force Meeting  
June 15, 2021**

George H. Detweiler, Jr.  
Office of Navigation Systems



Homeland  
Security



---

# COAST GUARD ROLES AND RESPONSIBILITIES

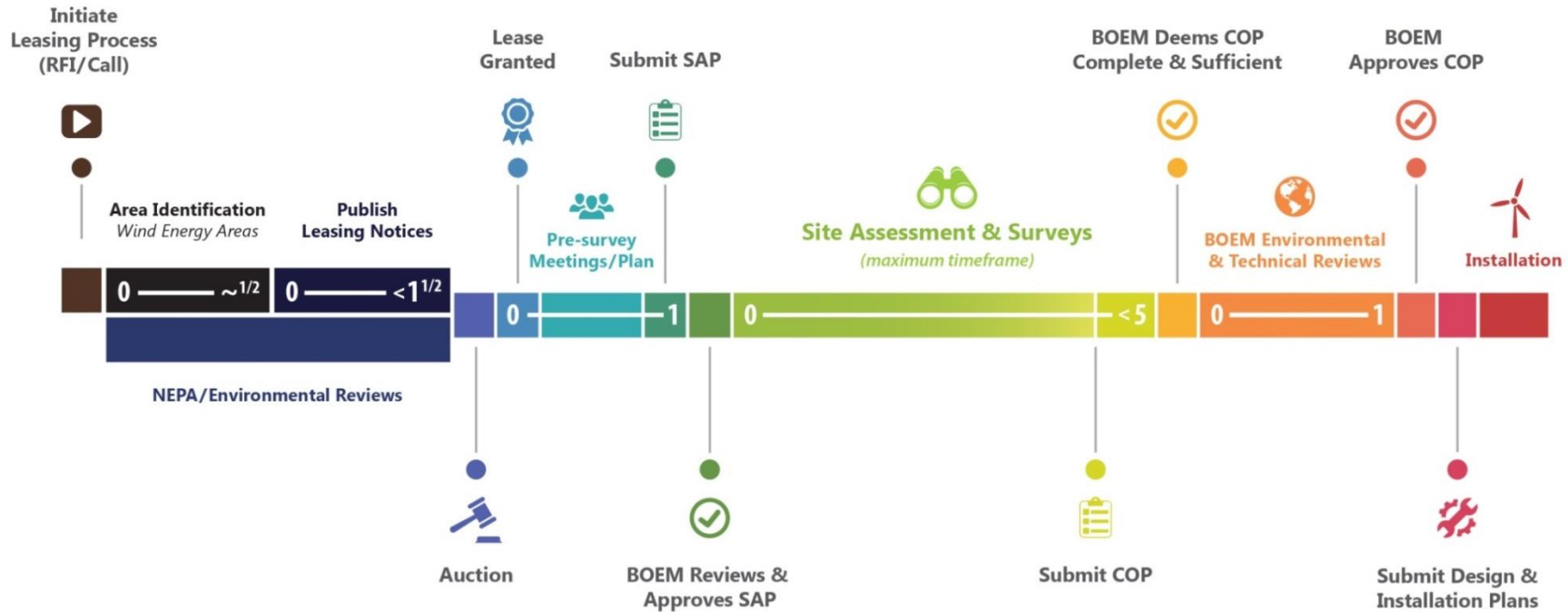
- Mission: to ensure our Nation's maritime safety, security and stewardship.
- Recognized as a Subject Matter Expert (SME) for:
  - maritime safety, maritime security, maritime mobility,
  - national defense, and
  - protection of the marine environment.
- Member of BOEM's State Renewable Energy Task Forces
- Collaborate on use of Navigation Safety Risk Assessments for evaluating specific projects
- Cooperating agency for BOEM's NEPA purposes
- Consulting agency for NHPA Section 106

---

# COAST GUARD OBJECTIVES

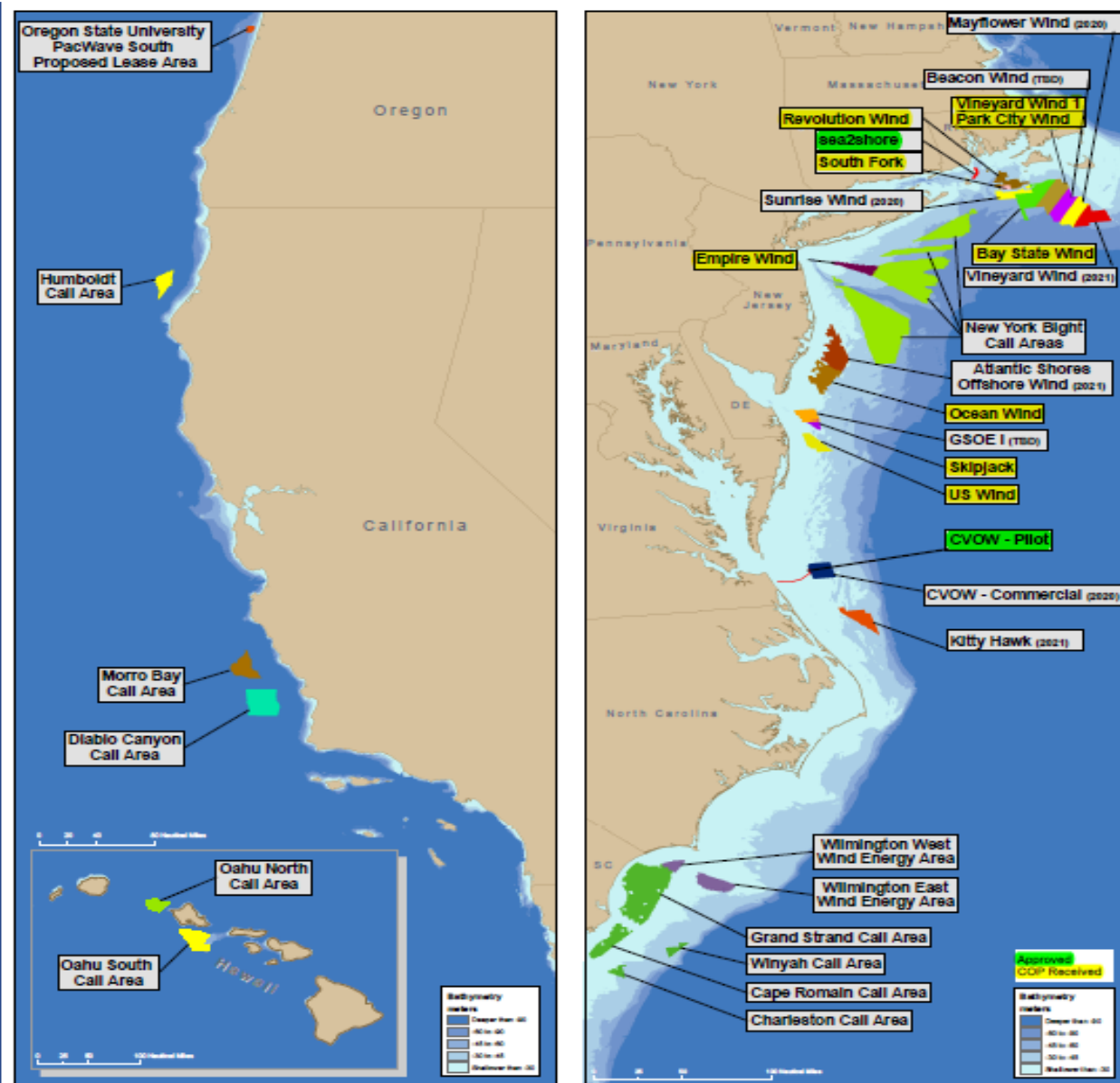
- **Protect** All mariners, Property (wind farm(s)) and the Environment
- Provide **recommendations** and identify **potential impacts** as a Cooperating agency for NEPA purposes to the Lead Agency (LA) (BOEM) on the following areas:
  - Safety of navigation for the entire maritime community,
  - Traditional uses of the particular waterway (MTS, Fishing),
  - Ability to still carry out other Coast Guard missions (SAR, MER, MLE/PWCS)
- “ **To the extent practicable**”, **reconcile the need for safe access routes with the needs of all other reasonable uses of the area involved**, e.g., MTS, wind renewable energy installations, fishing, recreation, tourism, etc. (Mutual Co-Existence)
- Maintain a safe, secure, efficient and resilient Marine Transportation System (**MTS**)
  - Ensuring a **safe and secure flow** of national defense and commercial vessel traffic is vital to both our Nation’s national and economic security

# BOEM PROCESS



CG involved at every phase of process.

# OCS RENEWABLE ENERGY PROJECTS



---

# NUMBER/LOCATION/STATUS

<b>Company</b>	<b>State</b>	<b>Current Status</b>
• GSOE I, LLC	DE	SAP
• Skipjack Offshore Energy, LLC	DE	COP
• Virginia Electric and Power Company	VA	COP
• Revolution Wind	RI/MA	COP
• South Fork Wind LLC	RI/MA	COP
• Sunrise Wind LLC	MA	COP
• US Wind Inc.	MD	COP
• Ocean Wind LLC	NJ	COP
• Atlantic Shores	NJ	COP
• Bay State Wind LLC	MA	COP
• Vineyard Wind LLC	MA	COP
• Avangrid Renewables, LLC	NC	COP
• Equinor Wind US LLC	NY	COP
• Equinor Wind US LLC	MA	SAP
• Mayflower Wind Energy, LLC	MA	COP
• Vineyard Wind LLC	MA	SAP



---

# COAST GUARD INVOLVEMENT

- AT ALL STAGES
- MOST CRITICAL IS CONSTRUCTION AND OPERATION (COP) PHASE
- SEE THE FOOTPRINT
  - NUMBER OF TURBINES
  - SIZE OF TURBINES
  - AXIS OF TURBINES
  - SPACING OF TURBINES
  - SIZE OF TURBINES
- NAVIGATION SAFETY RISK ASSESSMENT REVIEW



---

# NAVIGATION SAFETY RISK ASSESSMENT (NSRA)

- Navigation safety requires that mariners be able to:
  - determine their position and a safe course to steer,
  - be alert to unseen dangers,
  - determine if risk of collision exists and take action to avoid collision.
- Wind farm impacts nav safety if it impairs/impacts the mariner's ability to do the above.
- NSRA = an assessment of the nav safety risks leveraging existing studies, standard industry practices, or guidelines from recognized sources (i.e governmental agencies or classification societies) applicable to their wind farm or the characteristics of the waterway.
- NSRA identifies and evaluates potential mitigation measures.
- BOEM requires completion by the **developer**
- Coast Guard Guidance
  - NVIC 01-19
  - Marine Planning Guidelines
- Reviewed by Coast Guard for BOEM
- Recommendations/conditions provided to BOEM and developer concerning mitigation measures



---

# NSRA TOPICS

- Site and Installation Coordinates
- Traffic Survey
- Offshore Above Water Structure
- Offshore Under Water Structure
- Assessment of Access and Navigation Within or close to structures
- Effect of Tides, Tidal Streams, and Currents
- Weather
- Configuration and Collision Avoidance
- Visual Navigation
- Communications, Radar and Positioning Systems
- Risk of Collision, Allision, or Grounding
- Emergency Response Considerations
- Facility Characteristics / Design Requirements
- Operational Requirements / Operational Procedures

---

# SAR / MEP / OTHER MISSIONS

- USCG (District/Sector) reviews wind farm proposals to determine impact on its Search and Rescue (SAR), Marine Environmental Protection and other missions.
- USCG may recommend:
  - Emergency shutdown procedures.
  - Communications capabilities.
  - Mariner Information Sheets.
  - Monitoring capabilities.
  - Marking and lighting schemes

---

# DELIVERABLES TO BOEM

Document including the following:

- Recommend adoption of a wind farm layout
- Design conditions
  - Marking and lighting
  - Blade/Nacelle Control
- Operating Conditions
  - Installation
  - SOP
  - Staffing
  - Communications
  - Monitoring
- Reporting Conditions
- Miscellaneous

---

# CHALLENGES

- Limited authority
- Need for multiple policy statements
- One size will not fit all
- Keeping review / input at lowest level within organization
- BOEM can ignore our recommendations
- No single “energy” office in the CG

---

# QUESTIONS



**“We Help Mariners Get There”**

**George Detweiler**  
[George.H.Detweiler@uscg.mil](mailto:George.H.Detweiler@uscg.mil)  
+1-202-372-1566 (office)

COMMANDANT (CG-NAV-2)  
US COAST GUARD STOP 7418  
2703 MARTIN LUTHER KING JR. BLVD SE  
WASHINGTON, DC 20593-7418



**Homeland  
Security**

