

Gulf of Maine Inter–Agency Task Force Meeting May 19, 2022



Coast Guard Updates

Ms. Maureen Kallgren, HQ (CG-NAV-2)

OREI: ROLES & RESPONSIBILITIES

- **Protect** All mariners, property (offshore development) and the environment
- Ensure Safe Navigation Routes (46 USC 70003)
 - "...in order to provide safe access routes for the movement of vessel traffic proceeding to or from ports or places subject to the jurisdiction of the United States... designate necessary fairways and traffic separation schemes for vessels operating in the territorial sea of the United States and in high seas approaches, outside the territorial sea, to such ports or places."
- Reconcile Conflicts between Waterway Users
 - **"To the extent practicable", reconcile the need for safe access routes with the needs of all other reasonable uses of the area involved**, e.g., MTS, wind renewable energy installations, fishing, recreation, tourism, etc. (Mutual Co-Existence)



OREI: ROLES & RESPONSIBILITIES

- Cooperating agency for BOEM's NEPA purposes
- Consulting agency for NHPA Section 106
- Member of BOEM's State Renewable Energy Task Forces
- Collaborate on use of Navigation Safety Risk Assessments for evaluating specific projects

**CG-NAV is the primary contact for all things OREI
at USCG Headquarters**



Coast Guard activities in the Gulf of Maine

Sector Northern New England – field operational command

- ▶ Includes Maine, New Hampshire, Vermont and northeastern New York.
- ▶ Covers over 5,000 miles of coastline and 11,000 square nautical miles of water.
- ▶ Includes coastal and river cargo ports, cruise destinations, and Lake Champlain.
- ▶ Units (8 Stations, 8 Vessels, 3 Aids to Navigation Units, 2 Marine Safety Detachments)

Primary Operational Missions

- ▶ Search and Rescue
- ▶ Federal ATON (over 1000 aids)
- ▶ Ice Breaking
- ▶ Living Marine Resource (enforcement)
- ▶ Port Waterways Coastal Security



Key Guidance: COMDTINST 16003.2B

Internal

- Coast Guard policy related to spatial use of maritime domain.
- Links traditional WWM missions, CG program elements, and analysis tools to marine planning.
 - **CG-NAV-2**- Create and Maintain Standards / MOU and MOA for Marine Planning/ Management and Oversight.
 - **District Commanders**-perform WAMS, PARS, and WSA, use regulatory tools (LAA, RNA) & Review developer NSRA.
 - **NAVCEN**- Support field with AIS data for various processes
 - **Sector Commanders**- Support Marine Planning efforts in AOR with primary responsibility for Area Committees and Harbor Safety Committees.
- Appendices contain instructions on performing specific marine planning activities.



Key Guidance: NVIC 01-19

External

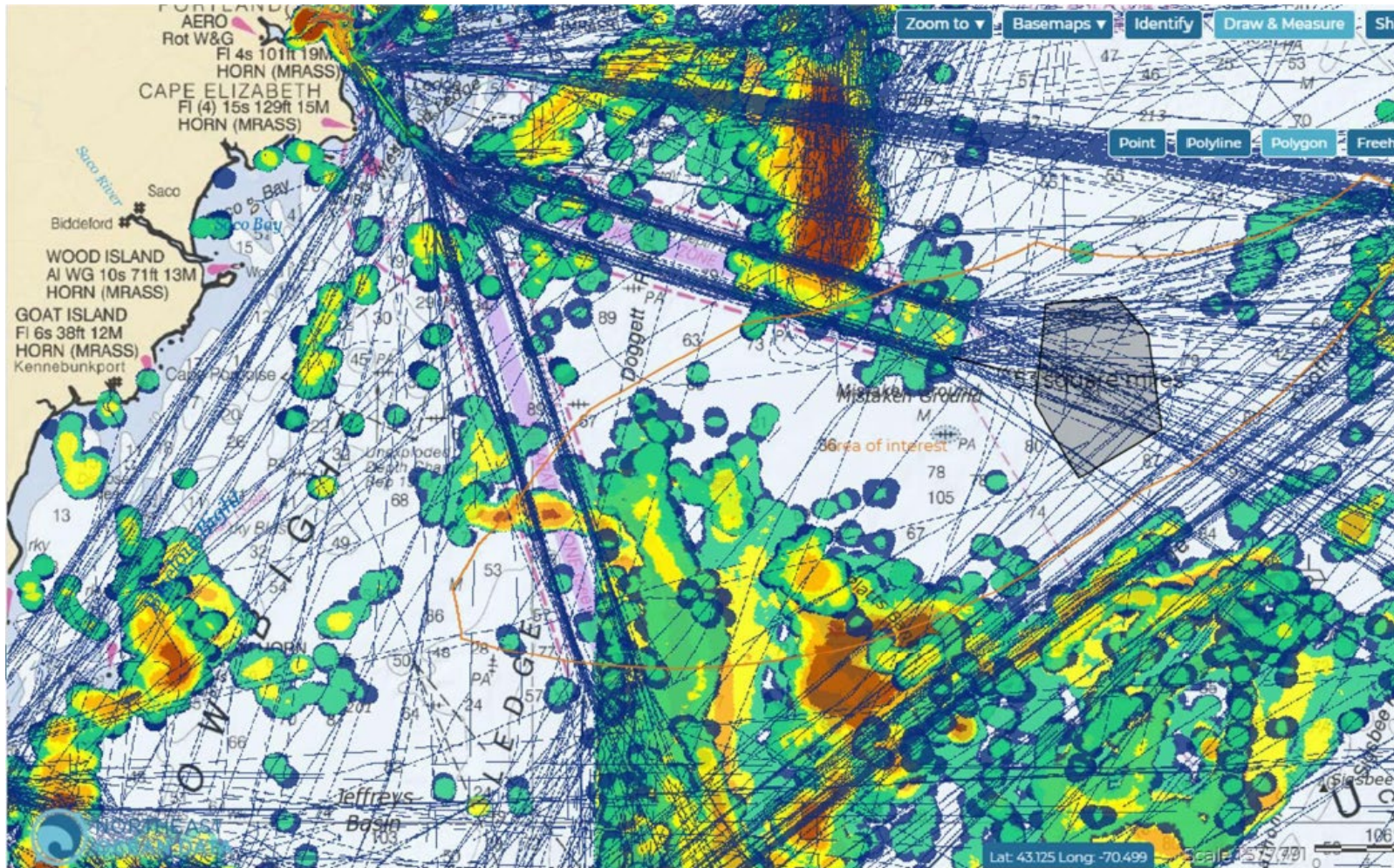
- Guidance and Recommendations in the following areas:
 - ▶ Safety of navigation for the entire maritime community
 - ▶ The Marine Transportation System (MTS)
 - ▶ Traditional uses of the waterway,
 - ▶ Other 11 Coast Guard missions (SAR, MEP, Security, etc.)
- Information to Industry, Port Safety and Security stakeholders and the general public concerning our Roles and Responsibilities
- Available online www.navcen.uscg.gov

Approaches to Maine, New Hampshire, and Massachusetts Port Access Route Study (MNMPARS)

- Federal Register Notice (87 FR 18800)
- 45-day comment period – Expired May 16th, 2022
- Study Area – Approx. 20,500 square nautical mile region including the First Coast Guard District's portion of the Gulf of Maine, New Hampshire Seacoast, and Massachusetts Bay
- Evaluate adequacy of existing vessel routing measures and determine whether additional measures are necessary to ensure navigational safety and reduce risk of marine casualties
- Factors
 - ▶ Offshore Development
 - ▶ Increased Vessel Traffic & Changing Traffic Patterns
 - ▶ Weather Conditions
 - ▶ Navigational Difficulty



SPECIFIC CONCERNS WITH CURRENT RESEARCH LEASE LOCATION



Homeland Security





Questions



- **Maureen Kallgren, CG-NAV-2, Washington, DC**
 - Maureen.R.Kallgren2@uscg.mil
- **Michele Desautels, First CG District, Boston, MA**
 - Michele.E.Desautels@uscg.mil
- **Christopher Sparkman, First CG District, Boston, MA**
 - Christopher.S.Sparkman@uscg.mil
- **LTJG Tom Davis, First CG District, Boston, MA**
 - Thomas.S.Davis@uscg.mil



Questions



- **BOSN Patrick Brown, Sector Northern New England, Waterways Management**
 - Patrick.R.Brown@uscg.mil
- **MSTC Zachary Wetzel, Sector Northern New England, Waterways Management**
 - Zachary.R.Wetzel@uscg.mil
- **LCDR Ben Lyons, Sector Boston, Waterways Management**
 - Benjamin.C.Lyons@uscg.mil
- **Tim Chase, Sector Boston, Waterways Management**
 - Timothy.W.Chase@uscg.mil