

VINEYARD NORTHEAST

CONSTRUCTION AND OPERATIONS PLAN VOLUME II APPENDIX

MARCH 2024

PREPARED BY:

Epsilon
ASSOCIATES INC.

SUBMITTED BY:

VINEYARD NORTHEAST LLC

VINEYARD



OFFSHORE

PUBLIC VERSION

Vineyard Northeast COP

Appendix II-J Seascape, Landscape, and Visual Impact Assessment

Prepared by:
Saratoga Associates

Prepared for:
Vineyard Northeast LLC



March 2024

Revision	Date	Description
0	July 2022	Initial submission.
1	April 2023	Updated to address Bureau of Ocean Energy Management (BOEM) Round 1 Comments (dated January 13, 2023) and made other minor corrections.
2	January 2024	Updated to address BOEM Round 4 Comments (dated September 24, 2023) and to reflect revisions to the onshore Project Design Envelope.
3	March 2024	Made minor revisions.

Appendix D
PHOTO SIMULATIONS



Photographic Simulations

Photo Location Map

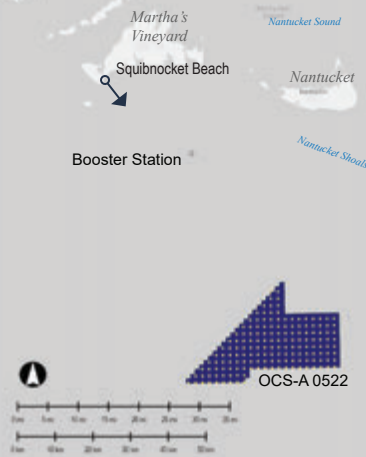


Photo Data

Date/Time:	06-May-2022 / 11:15
Light Conditions:	Side Light
Camera:	Canon 6D Mark II
Focal Length:	50mm (full frame)

Photo Location

Latitude:	41° 19' 09.2234" N
Longitude:	70° 45' 52.5970" W
Elevation (+/-):	4.3 m (14 ft)
Nearest Turbine:	73.3 km (44.9 mi)
Farthest Turbine:	98.5 km (61.2 mi)
Horiz. Field-of-View:	28.2°
Booster Station Dist.:	30.9 km (19.2 mi)

Meteorological Data

Temperature:	58°F
Humidity:	67%
Visibility:	10 mi
Weather Condition:	Mostly cloudy

Visual Setting

SCALCA:	Ocean Beach/Coastal Dunes, Shoreline Residential
Resource Type:	Public Beach
Use Type:	Relaxation
Viewer Types:	Scenery-oriented Visitors Recreation-oriented Visitors

Figure D-1a

M08: Squibnocket Beach
Town of Chillmark, Martha's Vineyard, MA

EXISTING VIEW

The above photograph is intended to be viewed 20 inches from the reader's eye when printed on 11"x17" paper and 13 inches from the reader's eye when printed on 8 1/2" x 11" paper. Viewing on an uncalibrated video monitor can alter intended lightness, color and/or contrast of the image.



**VINEYARD
NORTHEAST**
VINEYARD OFFSHORE



Photographic Simulations

Photo Location Map

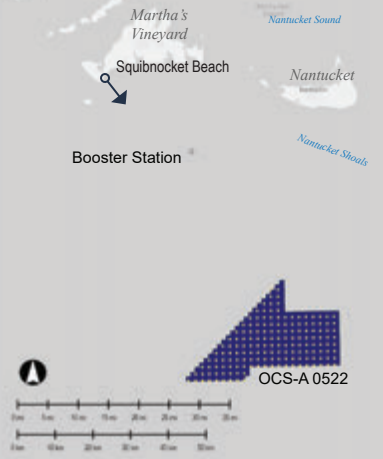


Photo Data

Date/Time:	06-May-2022 / 11:15
Light Conditions:	Side Light
Camera:	Canon 6D Mark II
Focal Length:	50mm (full frame)

Photo Location

Latitude:	41° 19' 09.2234" N
Longitude:	70° 45' 52.5970" W
Elevation (+/-):	4.3 m (14 ft)
Nearest Turbine:	72.3 km (44.9 mi)
Farthest Turbine:	98.5 km (61.2 mi)
Horiz. Field-of-View:	28.2°
Booster Station Dist.:	30.9 km (19.2 mi)

Visible Portion of Closest WTG

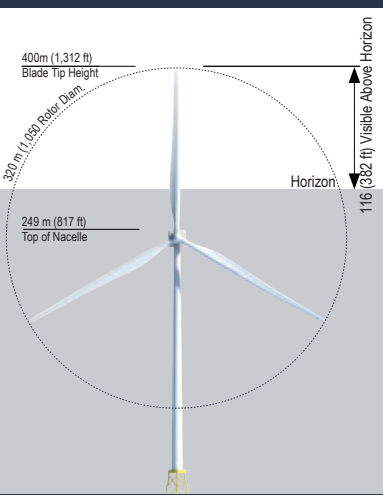


Figure D-1b

M08: Squibnocket Beach
Town of Chillmark, Martha's Vineyard, MA

SIMULATED VIEW - WTG & BOOSTER STATION

The above photograph is intended to be viewed 20 inches from the reader's eye when printed on 11"x17" paper and 13 inches from the reader's eye when printed on 8 1/2" x 11" paper. Viewing on an uncalibrated video monitor can alter intended lightness, color and/or contrast of the image.



Photographic Simulations

Photo Location Map

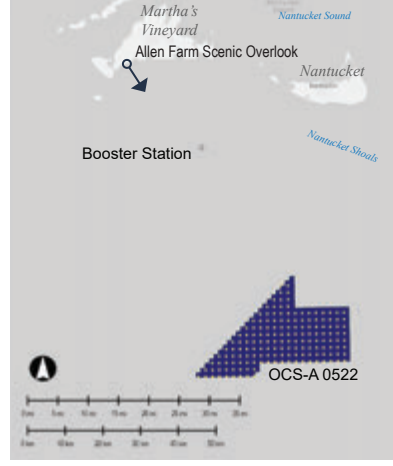


Photo Data

Date/Time:	06-May-2022 / 09:40
Light Conditions:	Side Light
Camera:	Canon 6D Mark II
Focal Length:	50mm (full frame)

Photo Location

Latitude:	41° 20' 30.2027" N
Longitude:	70° 43' 47.7156" W
Elevation (+/-):	14.3 m (47 ft)
Nearest Turbine:	72.4 km (45.0 mi)
Farthest Turbine:	98.7 km (61.3 mi)
Horiz. Field-of-View:	28.0°
Booster Station Dist.:	30.7 km (19.1 mi)

Meteorological Data

Temperature:	62°F
Humidity:	44%
Visibility:	10 mi
Weather Condition:	Mostly cloudy

Visual Setting

SCALCA:	Shoreline Residential
Resource Type:	Scenic Overlook
Use Type:	Scenic/Cultural Tourism
Viewer Types:	Scenery-oriented Visitors

Figure D-2a
 M06: Allen Farm Scenic Overlook
 Town of Chillmark, Martha's Vineyard, MA

EXISTING VIEW

The above photograph is intended to be viewed 20 inches from the reader's eye when printed on 11"x17" paper and 13 inches from the reader's eye when printed on 8 1/2" x 11" paper. Viewing on an uncalibrated video monitor can alter intended lightness, color and/or contrast of the image.





Photographic Simulations

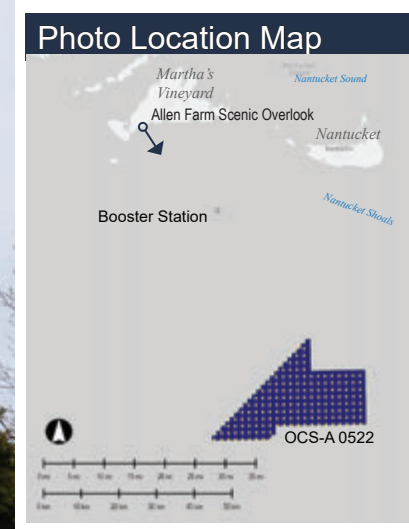


Photo Data

Date/Time:	06-May-2022 / 09:40
Light Conditions:	Side Light
Camera:	Canon 6D Mark II
Focal Length:	50mm (full frame)

Photo Location

Latitude:	41° 20' 30.2027" N
Longitude:	70° 43' 47.7156" W
Elevation (+/-):	14.3 m (47 ft)
Nearest Turbine:	72.4 km (45.0 mi)
Farthest Turbine:	98.7 km (61.3 mi)
Horiz. Field-of-View:	28.0°
Booster Station Dist.:	30.7 km (19.1 mi)

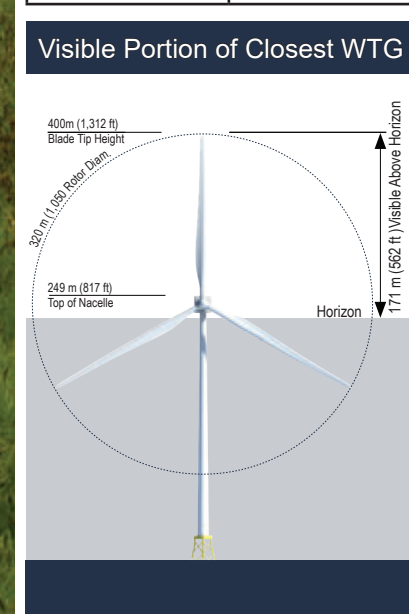


Figure D-2b
M06: Allen Farm Scenic Overlook
Town of Chillmark, Martha's Vineyard, MA

SIMULATED VIEW - WTG & BOOSTER STATION

The above photograph is intended to be viewed 20 inches from the reader's eye when printed on 11"x17" paper and 13 inches from the reader's eye when printed on 8 1/2" x 11" paper. Viewing on an uncalibrated video monitor can alter intended lightness, color and/or contrast of the image.





Photographic Simulations

Photo Location Map

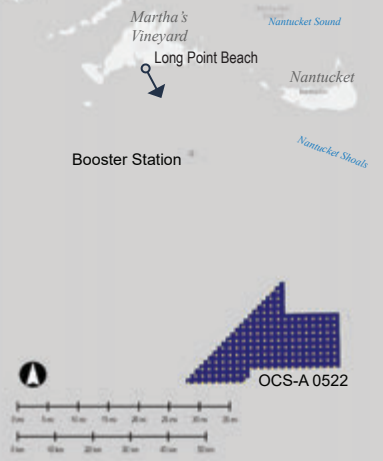


Photo Data

Date/Time:	11-Apr-2022 / 10:27
Light Conditions:	Back Light
Camera:	Canon 6D Mark II
Focal Length:	50mm (full frame)

Photo Location

Latitude:	41° 20' 54.5751" N
Longitude:	70° 38' 19.5936" W
Elevation (+/-):	5.5 m (18 ft)
Nearest Turbine:	69.0 km (42.9 mi)
Farthest Turbine:	95.0 km (59.0 mi)
Horiz. Field-of-View:	28.8°
Booster Station Dist.:	26.7 km (16.6 mi)

Meteorological Data

Temperature:	52°F
Humidity:	45%
Visibility:	10 mi
Weather Condition:	Fair

Visual Setting

SCALCA:	Ocean Beach/ Coastal Dunes
Resource Type:	Public Beach
Use Type:	Relaxation
Viewer Types:	Scenery-oriented Visitors Recreation-oriented Visitors

Figure D-3a

M05: Long Point Beach
Town of West Tisbury, Martha's Vineyard, MA

EXISTING VIEW

The above photograph is intended to be viewed 20 inches from the reader's eye when printed on 11"x17" paper and 13 inches from the reader's eye when printed on 8 1/2" x 11" paper. Viewing on an uncalibrated video monitor can alter intended lightness, color and/or contrast of the image.





Photographic Simulations

Photo Location Map

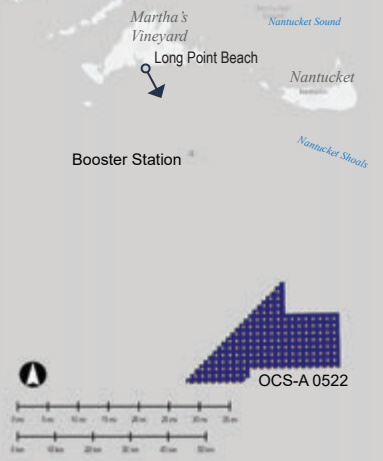


Photo Data

Date/Time:	11-Apr-2022 / 10:27
Light Conditions:	Back Light
Camera:	Canon 6D Mark II
Focal Length:	50mm (full frame)

Photo Location

Latitude:	41° 20' 54.5751" N
Longitude:	70° 38' 19.5936" W
Elevation (+/-):	5.5 m (18 ft)
Nearest Turbine:	69.0 km (42.9 mi)
Farthest Turbine:	95.0 km (59.0 mi)
Horiz. Field-of-View:	28.8°
Booster Station Dist.:	26.7 km (16.6 mi)

Visible Portion of Closest WTG

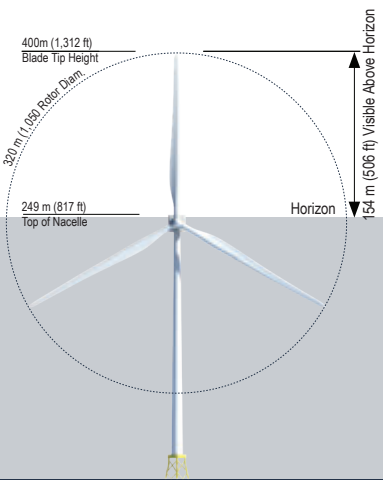


Figure D-3b

M05: Long Point Beach
Town of West Tisbury, Martha's Vineyard, MA

SIMULATED VIEW - WTG & BOOSTER STATION

The above photograph is intended to be viewed 20 inches from the reader's eye when printed on 11"x17" paper and 13 inches from the reader's eye when printed on 8 1/2" x 11" paper. Viewing on an uncalibrated video monitor can alter intended lightness, color and/or contrast of the image.





Photographic Simulations

Photo Location Map

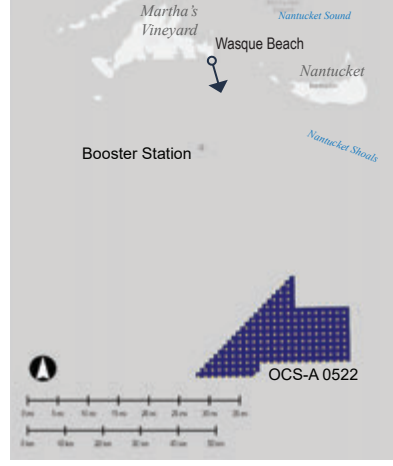


Photo Data

Date/Time:	10-Apr-2022 / 15:50
Light Conditions:	Side Light
Camera:	Canon 6D Mark II
Focal Length:	50mm (full frame)

Photo Location

Latitude:	41° 21' 05.1124" N
Longitude:	70° 27' 17.7010" W
Elevation (+/-):	7.3 m (24 ft)
Nearest Turbine:	63.2 km (39.3 mi)
Farthest Turbine:	88.0 km (54.7 mi)
Horiz. Field-of-View:	29.3°
Booster Station Dist.:	24.0 km (14.9 mi)

Meteorological Data

Temperature:	51°F
Humidity:	43%
Visibility:	10 mi
Weather Condition:	Fair

Visual Setting

SCALCA:	Ocean Beach/Coastal Dunes
Resource Type:	Public Beach
Use Type:	Relaxation
Viewer Types:	Scenery-oriented Visitors Recreation-oriented Visitors

Figure D-4a
M01: Wasque Beach
 Town of Edgartown, Chappaquiddick Island, MA

EXISTING VIEW

The above photograph is intended to be viewed 20 inches from the reader's eye when printed on 11"x17" paper and 13 inches from the reader's eye when printed on 8 1/2" x 11" paper. Viewing on an uncalibrated video monitor can alter intended lightness, color and/or contrast of the image.





Photographic Simulations

Photo Location Map

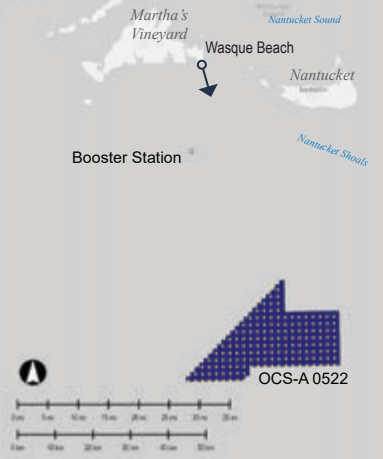


Photo Data

Date/Time:	10-Apr-2022 / 15:50
Light Conditions:	Side Light
Camera:	Canon 6D Mark II
Focal Length:	50mm (full frame)

Photo Location

Latitude:	41° 21' 05.1124" N
Longitude:	70° 27' 17.7010" W
Elevation (+/-):	7.3 m (24 ft)
Nearest Turbine:	63.2 km (39.3 mi)
Farthest Turbine:	88.0 km (54.7 mi)
Horiz. Field-of-View:	29.3°
Booster Station Dist.:	24.0 km (14.9 mi)

Visible Portion of Closest WTG

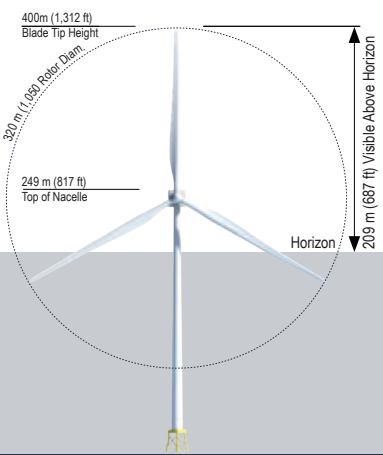


Figure D-4b

M01: Wasque Beach
Town of Edgartown, Chappaquiddick Island, MA

SIMULATED VIEW - WTG & BOOSTER STATION

The above photograph is intended to be viewed 20 inches from the reader's eye when printed on 11"x17" paper and 13 inches from the reader's eye when printed on 8 1/2" x 11" paper. Viewing on an uncalibrated video monitor can alter intended lightness, color and/or contrast of the image.



Photographic Simulations

Photo Location Map

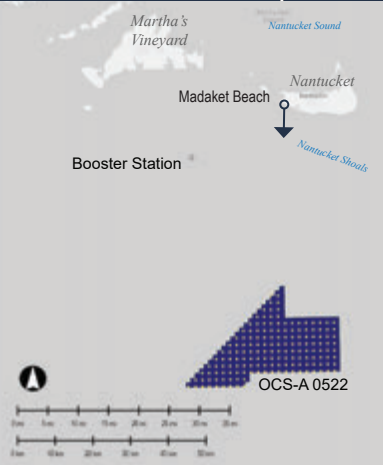


Photo Data

Date/Time:	05-May-2022 / 11:36
Light Conditions:	Side Light
Camera:	Canon 6D Mark II
Focal Length:	50mm (full frame)

Photo Location

Latitude:	41° 16' 13.2132" N
Longitude:	70° 12' 05.5008" W
Elevation (+/-):	6.4 m (21 ft)
Nearest Turbine:	51.5 km (32.0 mi)
Farthest Turbine:	79.8 km (49.6 mi)
Horiz. Field-of-View:	31.4°
Booster Station Dist.:	28.2 km (17.5 mi)

Meteorological Data

Temperature:	60°F
Humidity:	62%
Visibility:	10 mi
Weather Condition:	Fair

Visual Setting

SCALCA:	Ocean Beach/Coastal Dunes, Shoreline Residential
Resource Type:	Public Beach
Use Type:	Relaxation
Viewer Types:	Scenery-oriented Visitors Recreation-oriented Visitors

Figure D-5a
N25: Madaket Beach
Town of Nantucket, MA

EXISTING VIEW

The above photograph is intended to be viewed 20 inches from the reader's eye when printed on 11"x17" paper and 13 inches from the reader's eye when printed on 8 1/2" x 11" paper. Viewing on an uncalibrated video monitor can alter intended lightness, color and/or contrast of the image.



Photographic Simulations

Photo Location Map

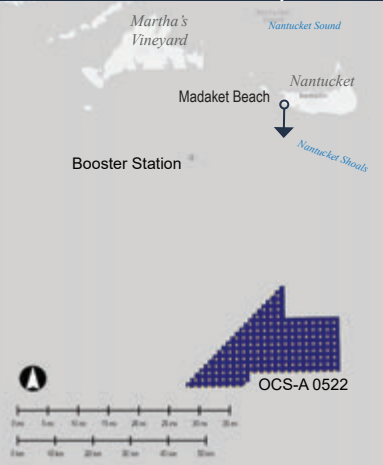


Photo Data

Date/Time:	05-May-2022 / 11:36
Light Conditions:	Side Light
Camera:	Canon 6D Mark II
Focal Length:	50mm (full frame)

Photo Location

Latitude:	41° 16' 13.2132" N
Longitude:	70° 12' 05.5008" W
Elevation (+/-):	6.4 m (21 ft)
Nearest Turbine:	51.5 km (32.0 mi)
Farthest Turbine:	79.8 km (49.6 mi)
Horiz. Field-of-View:	31.4°
Booster Station Dist.:	28.2 km (17.5 mi)

Visible Portion of Closest WTG

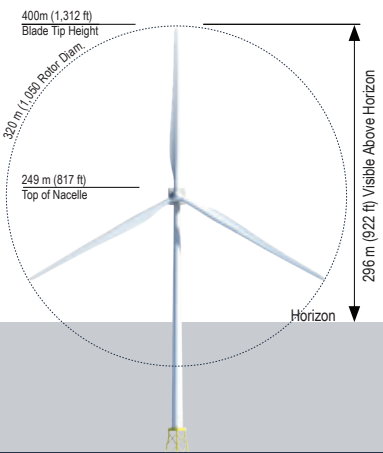


Figure D-5b
N25: Madaket Beach
Town of Nantucket, MA

SIMULATED VIEW - WTG

The above photograph is intended to be viewed 20 inches from the reader's eye when printed on 11"x17" paper and 13 inches from the reader's eye when printed on 8 1/2" x 11" paper. Viewing on an uncalibrated video monitor can alter intended lightness, color and/or contrast of the image.



Photographic Simulations

Photo Location Map

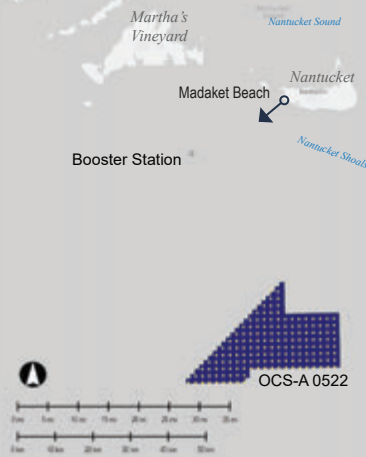


Photo Data

Date/Time:	05-May-2022 / 11:15
Light Conditions:	Side Light
Camera:	Canon 6D Mark II
Focal Length:	50mm (full frame)

Photo Location

Latitude:	41° 16' 13.2132" N
Longitude:	70° 12' 05.5008" W
Elevation (+/-):	6.4 m (21 ft)
Nearest Turbine:	51.5 km (32.0 mi)
Farthest Turbine:	79.8 km (49.6 mi)
Horiz. Field-of-View:	31.4°
Booster Station Dist.:	28.2 km (17.5 mi)

Meteorological Data

Temperature:	60°F
Humidity:	62%
Visibility:	10 mi
Weather Condition:	Fair

Visual Setting

SCALCA:	Ocean Beach/Coastal Dunes, Shoreline Residential
Resource Type:	Public Beach
Use Type:	Relaxation
Viewer Types:	Scenery-oriented Visitors Recreation-oriented Visitors

Figure D-5c
N25: Madaket Beach
Town of Nantucket, MA

EXISTING VIEW

The above photograph is intended to be viewed 20 inches from the reader's eye when printed on 11"x17" paper and 13 inches from the reader's eye when printed on 8 1/2" x 11" paper. Viewing on an uncalibrated video monitor can alter intended lightness, color and/or contrast of the image.



Photographic Simulations

Photo Location Map

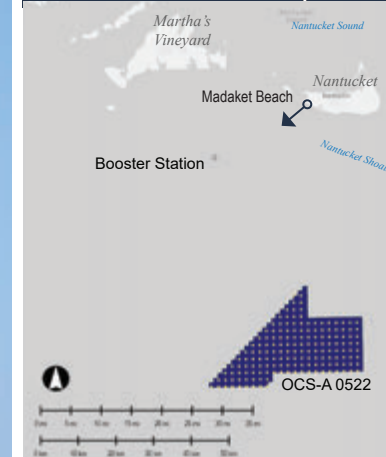


Photo Data

Date/Time:	05-May-2022 / 11:15
Light Conditions:	Side Light
Camera:	Canon 6D Mark II
Focal Length:	50mm (full frame)

Photo Location

Latitude:	41° 16' 13.2132" N
Longitude:	70° 12' 05.5008" W
Elevation (+/-):	6.4 m (21 ft)
Nearest Turbine:	51.5 km (32.0 mi)
Farthest Turbine:	79.8 km (49.6 mi)
Horiz. Field-of-View:	31.4°
Booster Station Dist.:	28.2 km (17.5 mi)



Figure D-5d

N25: Madaket Beach
Town of Nantucket, MA

SIMULATED VIEW - BOOSTER STATION

The above photograph is intended to be viewed 20 inches from the reader's eye when printed on 11"x17" paper and 13 inches from the reader's eye when printed on 8 1/2" x 11" paper. Viewing on an uncalibrated video monitor can alter intended lightness, color and/or contrast of the image.



Photographic Simulations

Photo Location Map

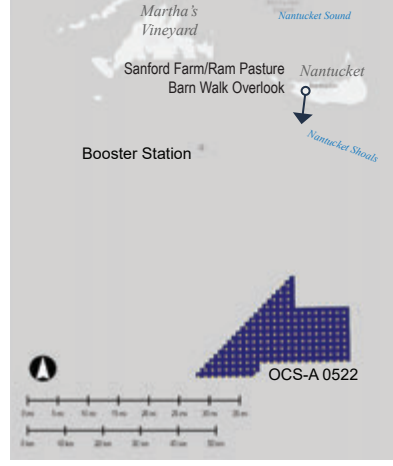


Photo Data

Date/Time:	05-May-2022 / 13:00
Light Conditions:	Side Light
Camera:	Canon 6D Mark II
Focal Length:	50mm (full frame)

Photo Location

Latitude:	41° 15' 56.4416" N
Longitude:	70° 09' 00.1908" W
Elevation (+/-):	15.2 m (50 ft)
Nearest Turbine:	51.3 km (31.9 mi)
Farthest Turbine:	80.8 km (50.2 mi)
Horiz. Field-of-View:	30.4°
Booster Station Dist.:	31.5 km (19.6 mi)

Meteorological Data

Temperature:	62°F
Humidity:	56%
Visibility:	10 mi
Weather Condition:	Fair

Visual Setting

SCALCA:	Sand Plain Grassland/ Coastal Scrub
Resource Type:	Trail
Use Type:	Scenic Recreation
Viewer Types:	Scenery-oriented Visitors Recreation-oriented Visitors

Figure D-6a
 N21: Sanford Farm/Ram Pasture - Barn Walk Overlook
 Town of Nantucket, MA

EXISTING VIEW

The above photograph is intended to be viewed 20 inches from the reader's eye when printed on 11"x17" paper and 13 inches from the reader's eye when printed on 8 1/2" x 11" paper. Viewing on an uncalibrated video monitor can alter intended lightness, color and/or contrast of the image.





Photographic Simulations

Photo Location Map

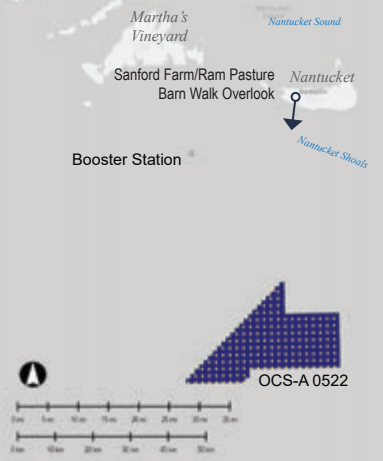


Photo Data

Date/Time:	05-May-2022 / 13:00
Light Conditions:	Side Light
Camera:	Canon 6D Mark II
Focal Length:	50mm (full frame)

Photo Location

Latitude:	41° 15' 56.4416" N
Longitude:	70° 09' 00.1908" W
Elevation (+/-):	15.2 m (50 ft)
Nearest Turbine:	51.3 km (31.9 mi)
Farthest Turbine:	80.8 km (50.2 mi)
Horiz. Field-of-View:	30.4°
Booster Station Dist.:	31.5 km (19.6 mi)

Visible Portion of Closest WTG

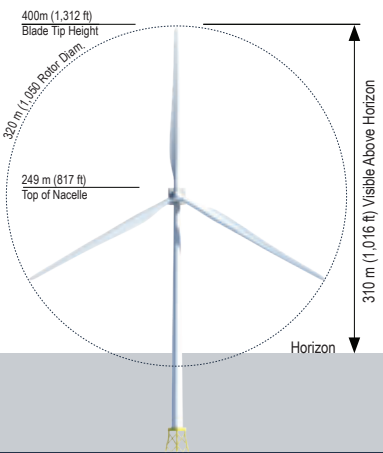


Figure D-6b

N21: Sanford Farm/Ram Pasture - Barn Walk Overlook
Town of Nantucket, MA

SIMULATED VIEW - WTG

The above photograph is intended to be viewed 20 inches from the reader's eye when printed on 11"x17" paper and 13 inches from the reader's eye when printed on 8 1/2" x 11" paper. Viewing on an uncalibrated video monitor can alter intended lightness, color and/or contrast of the image.





Photographic Simulations

Photo Location Map

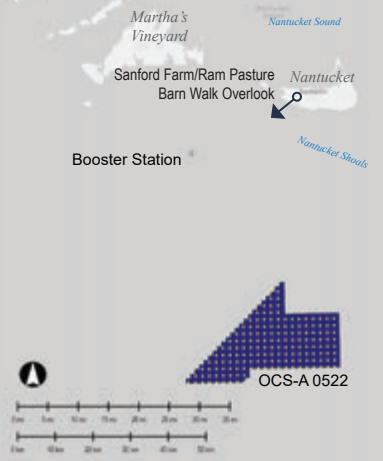


Photo Data

Date/Time:	05-May-2022 / 13:00
Light Conditions:	Side Light
Camera:	Canon 6D Mark II
Focal Length:	50mm (full frame)

Photo Location

Latitude:	41° 15' 56.4416" N
Longitude:	70° 09' 00.1908" W
Elevation (+/-):	15.2 m (50 ft)
Nearest Turbine:	51.3 (31.9 mi)
Farthest Turbine:	80.8 km (50.2 mi)
Horiz. Field-of-View:	30.4°
Booster Station Dist.:	31.5 m (19.6 mi)

Meteorological Data

Temperature:	62°F
Humidity:	56%
Visibility:	10 mi
Weather Condition:	Fair

Visual Setting

SCALCA:	Sand Plain Grassland/ Coastal Scrub
Resource Type:	Trail
Use Type:	Scenic Recreation
Viewer Types:	Scenery-oriented Visitors Recreation-oriented Visitors

Figure D-6c

N21: Sanford Farm/Ram Pasture - Barn Walk Overlook
Town of Nantucket, MA

EXISTING VIEW

The above photograph is intended to be viewed 20 inches from the reader's eye when printed on 11"x17" paper and 13 inches from the reader's eye when printed on 8 1/2" x 11" paper. Viewing on an uncalibrated video monitor can alter intended lightness, color and/or contrast of the image.





Photographic Simulations

Photo Location Map

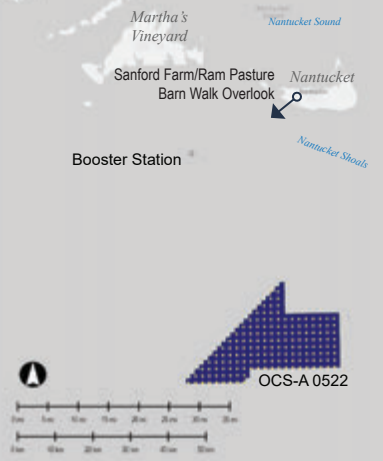


Photo Data

Date/Time:	05-May-2022 / 13:00
Light Conditions:	Side Light
Camera:	Canon 6D Mark II
Focal Length:	50mm (full frame)

Photo Location

Latitude:	41° 15' 56.4416" N
Longitude:	70° 09' 00.1908" W
Elevation (+/-):	15.2 m (50 ft)
Nearest Turbine:	51.3 km (31.9 mi)
Farthest Turbine:	80.8 km (50.2 mi)
Horiz. Field-of-View:	30.4°
Booster Station Dist.:	31.5 km (19.6 mi)

Figure D-6d

N21: Sanford Farm/Ram Pasture - Barn Walk Overlook
Town of Nantucket, MA

SIMULATED VIEW - BOOSTER STATION

The above photograph is intended to be viewed 20 inches from the reader's eye when printed on 11"x17" paper and 13 inches from the reader's eye when printed on 8 1/2" x 11" paper. Viewing on an uncalibrated video monitor can alter intended lightness, color and/or contrast of the image.





Photographic Simulations

Photo Location Map

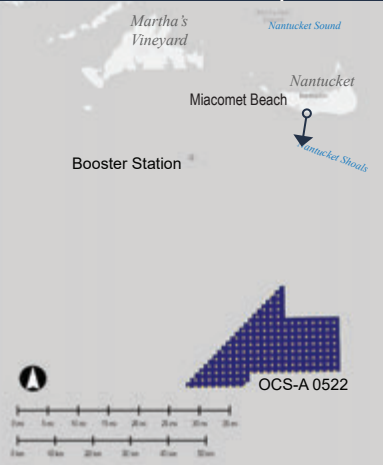


Photo Data

Date/Time:	13-Apr-2022 / 14:01
Light Conditions:	Side Light
Camera:	Canon 6D Mark II
Focal Length:	50mm (full frame)

Photo Location

Latitude:	41° 14' 35.4178" N
Longitude:	70° 07' 06.9132" W
Elevation (+/-):	4.3 m (14 ft)
Nearest Turbine:	49.2 km (30.6 mi)
Farthest Turbine:	79.5 km (49.4 mi)
Horiz. Field-of-View:	30.6°
Booster Station Dist.:	33.0 km (20.5 mi)

Meteorological Data

Temperature:	54°F
Humidity:	69%
Visibility:	10 mi
Weather Condition:	Fair

Visual Setting

SCALCA:	Ocean Beach/Coastal Dunes
Resource Type:	Public Beach
Use Type:	Relaxation
Viewer Types:	Scenery-oriented Visitors Recreation-oriented Visitors

Figure D-7a

N13: Miacomet Beach
Town of Nantucket, MA

EXISTING VIEW

The above photograph is intended to be viewed 20 inches from the reader's eye when printed on 11"x17" paper and 13 inches from the reader's eye when printed on 8 1/2" x 11" paper. Viewing on an uncalibrated video monitor can alter intended lightness, color and/or contrast of the image.





Photographic Simulations

Photo Location Map

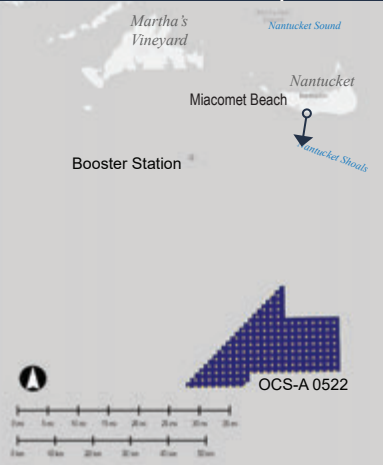


Photo Data

Date/Time:	13-Apr-2022 / 14:01
Light Conditions:	Side Light
Camera:	Canon 6D Mark II
Focal Length:	50mm (full frame)

Photo Location

Latitude:	41° 14' 35.4178° N
Longitude:	70° 07' 06.9132° W
Elevation (+/-):	4.3 m (14 ft)
Nearest Turbine:	49.2 km (30.6 mi)
Farthest Turbine:	79.5 km (49.4 mi)
Horiz. Field-of-View:	30.6°
Booster Station Dist.:	33.0 km (20.5 mi)

Visible Portion of Closest WTG

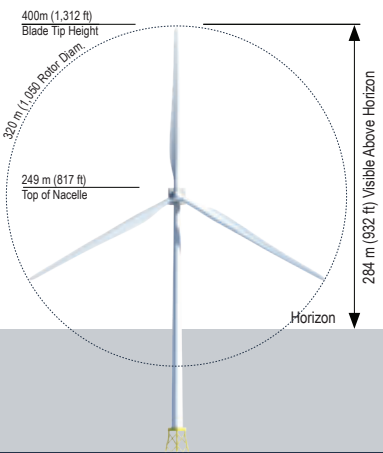


Figure D-7b
N13: Miacomet Beach
Town of Nantucket, MA

SIMULATED VIEW - WTG

The above photograph is intended to be viewed 20 inches from the reader's eye when printed on 11"x17" paper and 13 inches from the reader's eye when printed on 8 1/2" x 11" paper. Viewing on an uncalibrated video monitor can alter intended lightness, color and/or contrast of the image.





Photographic Simulations

Photo Location Map

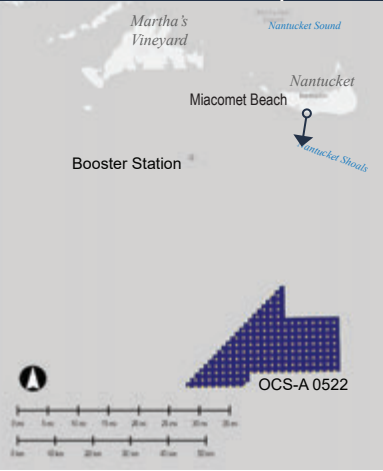


Photo Data

Date/Time:	13-Apr-2022 / 14:01
Light Conditions:	Side Light
Camera:	Canon 6D Mark II
Focal Length:	50mm (full frame)

Photo Location

Latitude:	41° 14' 35.4178" N
Longitude:	70° 07' 06.9132" W
Elevation (+/-):	4.3 m (14 ft)
Nearest Turbine:	49.2 km (30.6 mi)
Farthest Turbine:	79.5 km (49.4 mi)
Horiz. Field-of-View:	30.6°
Booster Station Dist.:	33.0 km (20.5 mi)

Visible Portion of Closest WTG

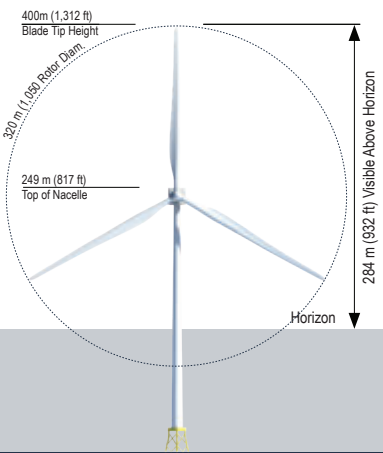


Figure D-7c

N13: Miacomet Beach
Town of Nantucket, MA

SIMULATED VIEW - WTG (MODERATE HAZE CONDITION)

This visualization incorporates a simulated haze condition that reduces visibility of the WTGs to approximately 50%.

The above photograph is intended to be viewed 20 inches from the reader's eye when printed on 11"x17" paper and 13 inches from the reader's eye when printed on 8 1/2" x 11" paper. Viewing on an uncalibrated video monitor can alter intended lightness, color and/or contrast of the image.



Photographic Simulations

Photo Location Map

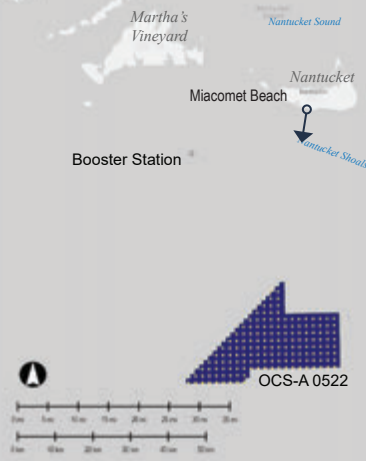


Photo Data

Date/Time:	13-Apr-2022 / 14:01
Light Conditions:	Side Light
Camera:	Canon 6D Mark II
Focal Length:	50mm (full frame)

Photo Location

Latitude:	41° 14' 35.4178° N
Longitude:	70° 07' 06.9132° W
Elevation (+/-):	4.3 m (14 ft)
Nearest Turbine:	49.2 km (30.6 mi)
Farthest Turbine:	79.5 km (49.4 mi)
Horiz. Field-of-View:	30.6°
Booster Station Dist.:	33.0 km (20.5 mi)

Visible Portion of Closest WTG

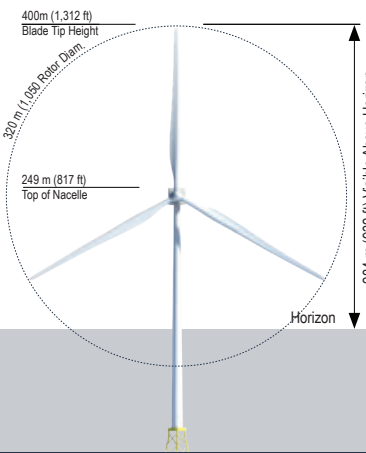


Figure D-7d
N13: Miacomet Beach
Town of Nantucket, MA

SIMULATED VIEW - WTG (HEAVY HAZE CONDITION)

This visualization incorporates a simulated haze condition that substantially masks visibility of the WTGs.

The above photograph is intended to be viewed 20 inches from the reader's eye when printed on 11"x17" paper and 13 inches from the reader's eye when printed on 8 1/2" x 11" paper. Viewing on an uncalibrated video monitor can alter intended lightness, color and/or contrast of the image.



Photographic Simulations

Photo Location Map

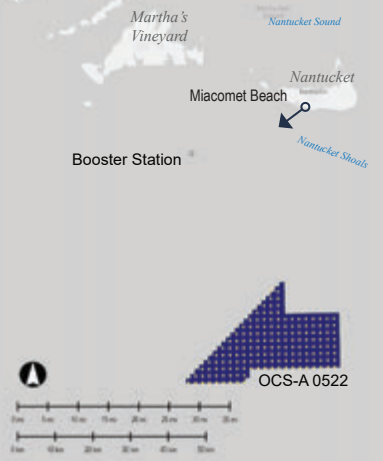


Photo Data

Date/Time:	13-Apr-2022 / 14:02
Light Conditions:	Side Light
Camera:	Canon 6D Mark II
Focal Length:	50mm (full frame)

Photo Location

Latitude:	41° 14' 35.4178" N
Longitude:	70° 07' 06.9132" W
Elevation (+/-):	4.3 m (14 ft)
Nearest Turbine:	49.2 km (30.6 mi)
Farthest Turbine:	79.5 km (49.4 mi)
Horiz. Field-of-View:	30.6°
Booster Station Dist.:	33.0 km (20.5 mi)

Meteorological Data

Temperature:	61°F
Humidity:	36%
Visibility:	10 mi
Weather Condition:	Cloudy

Visual Setting

SCALCA:	Ocean Beach/Coastal Dunes
Resource Type:	Public Beach
Use Type:	Relaxation
Viewer Types:	Scenery-oriented Visitors Recreation-oriented Visitors

Figure D-7e

N13: Miacomet Beach
Town of Nantucket, MA

EXISTING VIEW

The above photograph is intended to be viewed 20 inches from the reader's eye when printed on 11"x17" paper and 13 inches from the reader's eye when printed on 8 1/2" x 11" paper. Viewing on an uncalibrated video monitor can alter intended lightness, color and/or contrast of the image.





Photographic Simulations

Photo Location Map

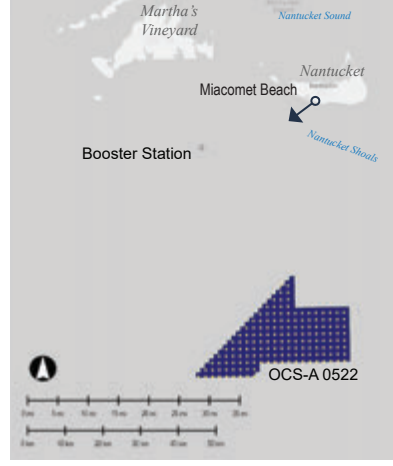


Photo Data

Date/Time:	13-Apr-2022 / 14:02
Light Conditions:	Side Light
Camera:	Canon 6D Mark II
Focal Length:	50mm (full frame)

Photo Location

Latitude:	41° 14' 35.4178" N
Longitude:	70° 07' 06.9132" W
Elevation (+/-):	4.3 m (14 ft)
Nearest Turbine:	49.2 km (30.6 mi)
Farthest Turbine:	79.5 km (49.4 mi)
Horiz. Field-of-View:	30.6°
Booster Station Dist.:	33.0 km (20.5 mi)

Figure D-7f
 N13: Miacomet Beach
 Town of Nantucket, MA

SIMULATED VIEW - BOOSTER STATION

The above photograph is intended to be viewed 20 inches from the reader's eye when printed on 11"x17" paper and 13 inches from the reader's eye when printed on 8 1/2" x 11" paper. Viewing on an uncalibrated video monitor can alter intended lightness, color and/or contrast of the image.





Photographic Simulations

Photo Location Map

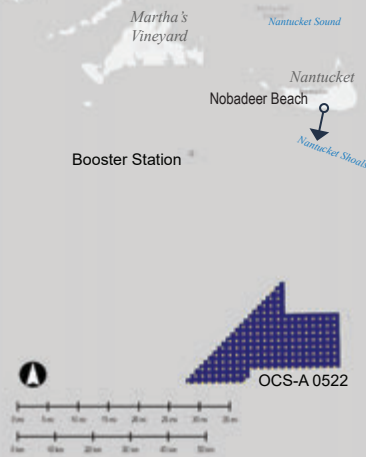


Photo Data

Date/Time:	12-Apr-2022 / 12:40
Light Conditions:	Side Light
Camera:	Canon 6D Mark II
Focal Length:	50mm (full frame)

Photo Location

Latitude:	41° 14' 41.8274" N
Longitude:	70° 04' 41.5380" W
Elevation (+/-):	5.5 m (18 ft)
Nearest Turbine:	50.1 km (31.1 mi)
Farthest Turbine:	81.1 km (50.4 mi)
Horiz. Field-of-View:	29.3°
Booster Station Dist.:	36.2 km (22.5 mi)

Meteorological Data

Temperature:	53°F
Humidity:	83%
Visibility:	10 mi
Weather Condition:	Cloudy

Visual Setting

SCA/LCA:	Ocean Beach/Coastal Dunes, Shoreline Residential
Resource Type:	Public Beach
Use Type:	Relaxation
Viewer Types:	Scenery-oriented Visitors Recreation-oriented Visitors

Figure D-8a
N11: Nobadeer Beach
Town of Nantucket, MA

EXISTING VIEW

The above photograph is intended to be viewed 20 inches from the reader's eye when printed on 11"x17" paper and 13 inches from the reader's eye when printed on 8 1/2" x 11" paper. Viewing on an uncalibrated video monitor can alter intended lightness, color and/or contrast of the image.





Photographic Simulations

Photo Location Map

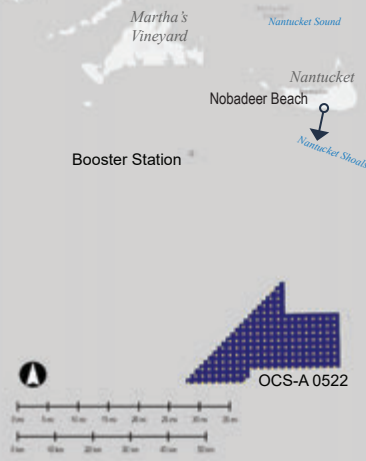


Photo Data

Date/Time:	12-Apr-2022 / 12:40
Light Conditions:	Side Light
Camera:	Canon 6D Mark II
Focal Length:	50mm (full frame)

Photo Location

Latitude:	41° 14' 41.8274" N
Longitude:	70° 04' 41.5380" W
Elevation (+/-):	5.5 m (18 ft)
Nearest Turbine:	50.1 km (31.1 mi)
Farthest Turbine:	81.1 km (50.4 mi)
Horiz. Field-of-View:	29.3°
Booster Station Dist.:	36.2 km (22.5 mi)

Visible Portion of Closest WTG

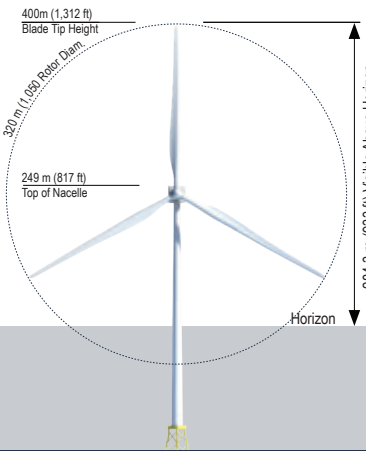


Figure D-8b
 N11: Nobadeer Beach
 Town of Nantucket, MA

SIMULATED VIEW - WTG

The above photograph is intended to be viewed 20 inches from the reader's eye when printed on 11"x17" paper and 13 inches from the reader's eye when printed on 8 1/2" x 11" paper. Viewing on an uncalibrated video monitor can alter intended lightness, color and/or contrast of the image.





Photographic Simulations

Photo Location Map

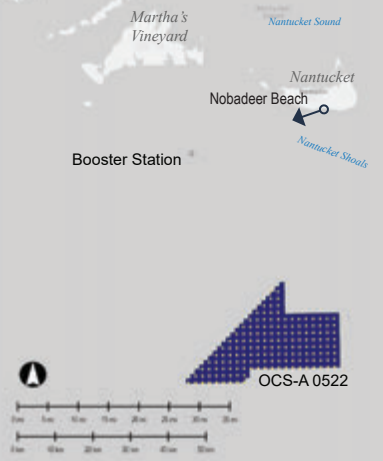


Photo Data

Date/Time:	12-Apr-2022 / 12:40
Light Conditions:	Side Light
Camera:	Canon 6D Mark II
Focal Length:	50mm (full frame)

Photo Location

Latitude:	41° 14' 41.8274" N
Longitude:	70° 04' 41.5380" W
Elevation (+/-):	5.5 m (18 ft)
Nearest Turbine:	50.1 km (31.1 mi)
Farthest Turbine:	81.1 km (50.4 mi)
Horiz. Field-of-View:	29.3°
Booster Station Dist.:	36.2 km (22.5 mi)

Meteorological Data

Temperature:	53°F
Humidity:	83%
Visibility:	10 mi
Weather Condition:	Cloudy

Visual Setting

SCALCA:	Ocean Beach/Coastal Dunes, Shoreline Residential
Resource Type:	Public Beach
Use Type:	Relaxation
Viewer Types:	Scenery-oriented Visitors Recreation-oriented Visitors

Figure D-8c

N11: Nobadeer Beach
Town of Nantucket, MA

EXISTING VIEW

The above photograph is intended to be viewed 20 inches from the reader's eye when printed on 11"x17" paper and 13 inches from the reader's eye when printed on 8 1/2" x 11" paper. Viewing on an uncalibrated video monitor can alter intended lightness, color and/or contrast of the image.





Photographic Simulations

Photo Location Map

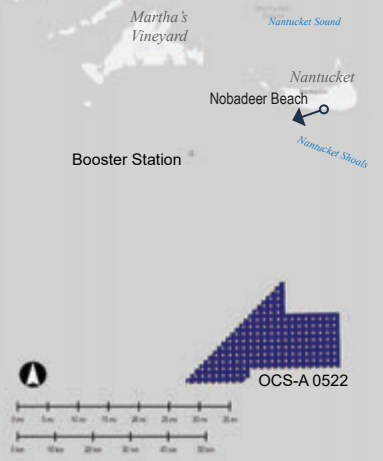


Photo Data

Date/Time:	12-Apr-2022 / 12:40
Light Conditions:	Side Light
Camera:	Canon 6D Mark II
Focal Length:	50mm (full frame)

Photo Location

Latitude:	41° 14' 41.8274" N
Longitude:	70° 04' 41.5380" W
Elevation (+/-):	5.5 m (18 ft)
Nearest Turbine:	50.1 km (31.1 mi)
Farthest Turbine:	81.1 km (50.4 mi)
Horiz. Field-of-View:	29.3°
Booster Station Dist.:	36.2 km (22.5 mi)

Figure D-8d
 N11: Nobadeer Beach
 Town of Nantucket, MA

SIMULATED VIEW - BOOSTER STATION

The above photograph is intended to be viewed 20 inches from the reader's eye when printed on 11"x17" paper and 13 inches from the reader's eye when printed on 8 1/2" x 11" paper. Viewing on an uncalibrated video monitor can alter intended lightness, color and/or contrast of the image.





Photographic Simulations

Photo Location Map

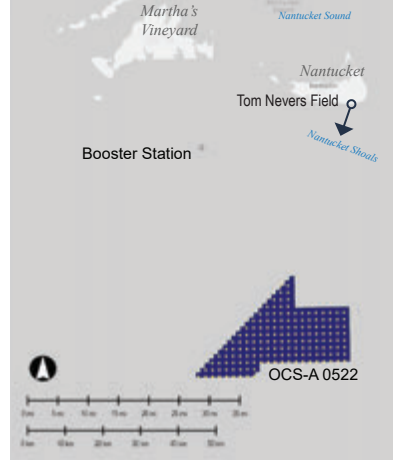


Photo Data

Date/Time:	13-Apr-2022 / 11:40
Light Conditions:	Side Light
Camera:	Canon 6D Mark II
Focal Length:	50mm (full frame)

Photo Location

Latitude:	41° 14' 23.5220" N
Longitude:	70° 00' 33.6750" W
Elevation (+/-):	9.5 m (31 ft)
Nearest Turbine:	51.2 km (31.8 mi)
Farthest Turbine:	83.2 km (51.7 mi)
Horiz. Field-of-View:	27.1°
Booster Station Dist.:	41.5 km (25.8 mi)

Meteorological Data

Temperature:	58°F
Humidity:	56%
Visibility:	10 mi
Weather Condition:	Fair

Visual Setting

SCA/LCA:	Ocean Beach/Coastal Dunes, Shoreline Residential
Resource Type:	Public Park/Beach
Use Type:	Recreation
Viewer Types:	Scenery-oriented Visitors Recreation-oriented Visitors

Figure D-9a
N08: Tom Nevers Field
Town of Nantucket, MA

EXISTING VIEW

The above photograph is intended to be viewed 20 inches from the reader's eye when printed on 11"x17" paper and 13 inches from the reader's eye when printed on 8 1/2" x 11" paper. Viewing on an uncalibrated video monitor can alter intended lightness, color and/or contrast of the image.





Photographic Simulations

Photo Location Map

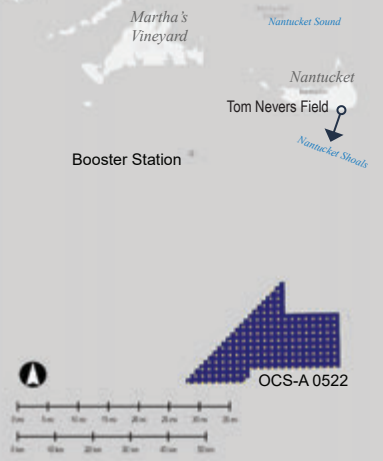


Photo Data

Date/Time:	13-Apr-2022 / 11:40
Light Conditions:	Side Light
Camera:	Canon 6D Mark II
Focal Length:	50mm (full frame)

Photo Location

Latitude:	41° 14' 23.5220" N
Longitude:	70° 00' 33.6750" W
Elevation (+/-):	9.5 m (31 ft)
Nearest Turbine:	51.2 km (31.8 mi)
Farthest Turbine:	83.2 km (51.7 mi)
Horiz. Field-of-View:	27.1°
Booster Station Dist.:	41.5 km (25.8 mi)

Visible Portion of Closest WTG

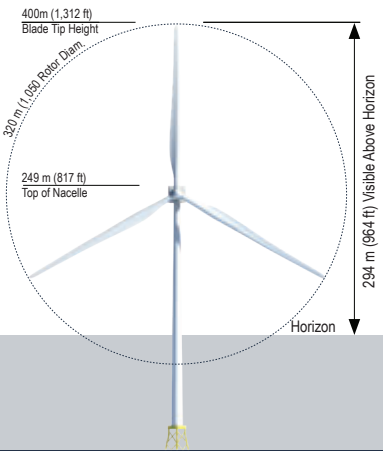


Figure D-9b
 N08: Tom Nevers Field
 Town of Nantucket, MA

SIMULATED VIEW - WTG

The above photograph is intended to be viewed 20 inches from the reader's eye when printed on 11"x17" paper and 13 inches from the reader's eye when printed on 8 1/2" x 11" paper. Viewing on an uncalibrated video monitor can alter intended lightness, color and/or contrast of the image.





Photographic Simulations

Photo Location Map

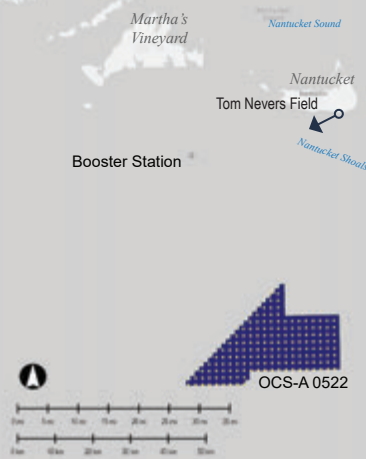


Photo Data

Date/Time:	13-Apr-2022 / 11:40
Light Conditions:	Side Light
Camera:	Canon 6D Mark II
Focal Length:	50mm (full frame)

Photo Location

Latitude:	41° 14' 23.5220" N
Longitude:	70° 00' 33.6750" W
Elevation (+/-):	9.5 m (31 ft)
Nearest Turbine:	51.2 km (31.8 mi)
Farthest Turbine:	83.2 km (51.7 mi)
Horiz. Field-of-View:	27.1°
Booster Station Dist.:	41.5 km (25.8 mi)

Meteorological Data

Temperature:	58°F
Humidity:	56%
Visibility:	10 mi
Weather Condition:	Fair

Visual Setting

SCALCA:	Ocean Beach/Coastal Dunes, Shoreline Residential
Resource Type:	Public Park/Beach
Use Type:	Recreation
Viewer Types:	Scenery-oriented Visitors Recreation-oriented Visitors

Figure D-9c

N08: Tom Nevers Field
Town of Nantucket, MA

EXISTING VIEW

The above photograph is intended to be viewed 20 inches from the reader's eye when printed on 11"x17" paper and 13 inches from the reader's eye when printed on 8 1/2" x 11" paper. Viewing on an uncalibrated video monitor can alter intended lightness, color and/or contrast of the image.





Photographic Simulations

Photo Location Map

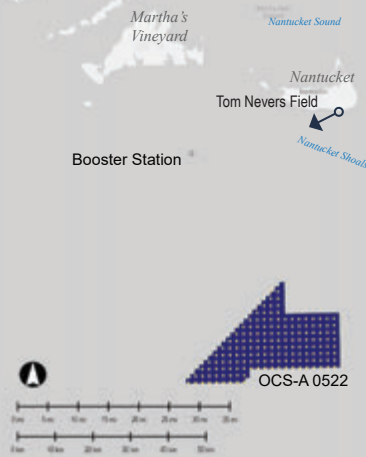


Photo Data

Date/Time:	13-Apr-2022 / 11:40
Light Conditions:	Side Light
Camera:	Canon 6D Mark II
Focal Length:	50mm (full frame)

Photo Location

Latitude:	41° 14' 23.5220" N
Longitude:	70° 00' 33.6750" W
Elevation (+/-):	9.5 m (31 ft)
Nearest Turbine:	51.2 km (31.8 mi)
Farthest Turbine:	83.2 km (51.7 mi)
Horiz. Field-of-View:	27.1°
Booster Station Dist.:	41.5 km (25.8 mi)

Figure D-9d

N08: Tom Nevers Field
Town of Nantucket, MA

SIMULATED VIEW - BOOSTER STATION

The above photograph is intended to be viewed 20 inches from the reader's eye when printed on 11"x17" paper and 13 inches from the reader's eye when printed on 8 1/2" x 11" paper. Viewing on an uncalibrated video monitor can alter intended lightness, color and/or contrast of the image.



Photographic Simulations

Photo Location Map

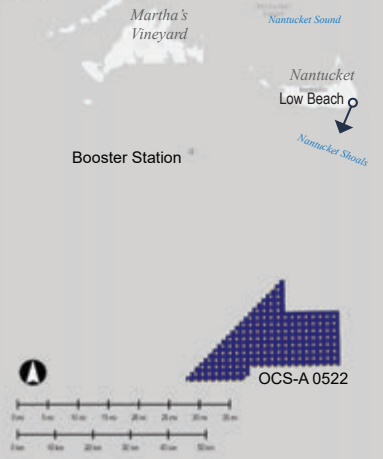


Photo Data

Date/Time:	13-Apr-2022 / 10:40
Light Conditions:	Side Light
Camera:	Canon 6D Mark II
Focal Length:	50mm (full frame)

Photo Location

Latitude:	41° 15' 09.5957" N
Longitude:	69° 58' 03.3204" W
Elevation (+/-):	2.9 m (9 ft)
Nearest Turbine:	53.8 km (33.4 mi)
Farthest Turbine:	86.3 km (53.6 mi)
Horiz. Field-of-View:	25.2°
Booster Station Dist.:	45.4 km (28.2 mi)

Meteorological Data

Temperature:	62°F
Humidity:	43%
Visibility:	10 mi
Weather Condition:	Fair

Visual Setting

SCALCA:	Ocean Beach/Coastal Dunes, Shoreline Residential
Resource Type:	Public Beach
Use Type:	Relaxation
Viewer Types:	Scenery-oriented Visitors Recreation-oriented Visitors

Figure D-10a

N06: Low Beach
Town of Nantucket, MA

EXISTING VIEW

The above photograph is intended to be viewed 20 inches from the reader's eye when printed on 11"x17" paper and 13 inches from the reader's eye when printed on 8 1/2" x 11" paper. Viewing on an uncalibrated video monitor can alter intended lightness, color and/or contrast of the image.



Photographic Simulations

Photo Location Map

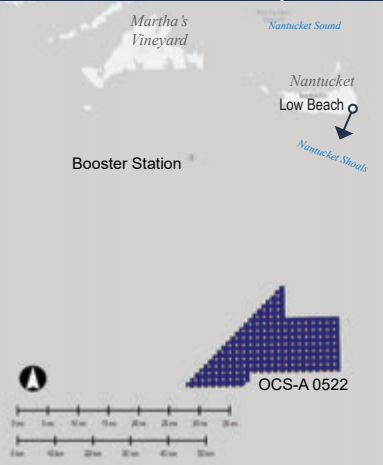


Photo Data

Date/Time:	13-Apr-2022 / 10:40
Light Conditions:	Side Light
Camera:	Canon 6D Mark II
Focal Length:	50mm (full frame)

Photo Location

Latitude:	41° 15' 09.5957" N
Longitude:	69° 58' 03.3204" W
Elevation (+/-):	2.9 m (9 ft)
Nearest Turbine:	53.8 km (33.4 mi)
Farthest Turbine:	86.3 km (53.6 mi)
Horiz. Field-of-View:	25.2°
Booster Station Dist.:	45.4 km (28.2 mi)

Visible Portion of Closest WTG

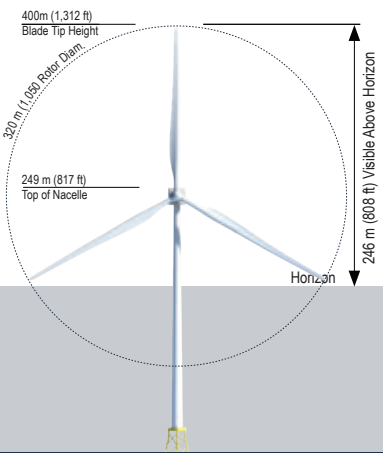


Figure D-10b
 N06: Low Beach
 Town of Nantucket, MA

SIMULATED VIEW - WTG

The above photograph is intended to be viewed 20 inches from the reader's eye when printed on 11"x17" paper and 13 inches from the reader's eye when printed on 8 1/2" x 11" paper. Viewing on an uncalibrated video monitor can alter intended lightness, color and/or contrast of the image.



Photographic Simulations

Photo Location Map

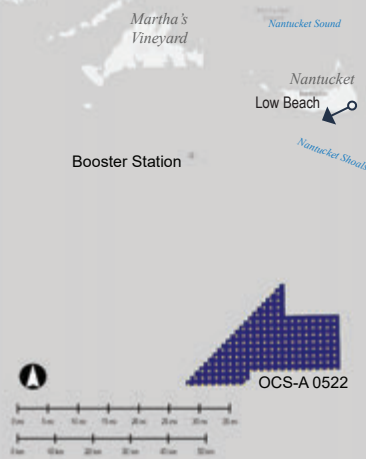


Photo Data

Date/Time:	13-Apr-2022 / 10:40
Light Conditions:	Side Light
Camera:	Canon 6D Mark II
Focal Length:	50mm (full frame)

Photo Location

Latitude:	41° 15' 09.5957" N
Longitude:	69° 58' 03.3204" W
Elevation (+/-):	2.9 m (9 ft)
Nearest Turbine:	53.8 km (33.4 mi)
Farthest Turbine:	86.3 km (53.6 mi)
Horiz. Field-of-View:	25.2°
Booster Station Dist.:	45.4 km (28.2 mi)

Meteorological Data

Temperature:	62°F
Humidity:	43%
Visibility:	10 mi
Weather Condition:	Fair

Visual Setting

SCALCA:	Ocean Beach/Coastal Dunes, Shoreline Residential
Resource Type:	Public Beach
Use Type:	Relaxation
Viewer Types:	Scenery-oriented Visitors Recreation-oriented Visitors

Figure D-10c

N06: Low Beach
Town of Nantucket, MA

EXISTING VIEW

The above photograph is intended to be viewed 20 inches from the reader's eye when printed on 11"x17" paper and 13 inches from the reader's eye when printed on 8 1/2" x 11" paper. Viewing on an uncalibrated video monitor can alter intended lightness, color and/or contrast of the image.



Photographic Simulations

Photo Location Map

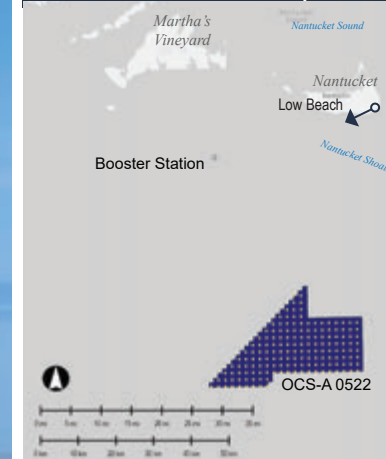


Photo Data

Date/Time:	13-Apr-2022 / 10:40
Light Conditions:	Side Light
Camera:	Canon 6D Mark II
Focal Length:	50mm (full frame)

Photo Location

Latitude:	41° 15' 09.5957" N
Longitude:	69° 58' 03.3204" W
Elevation (+/-):	2.9 m (9 ft)
Nearest Turbine:	53.8 km (33.4 mi)
Farthest Turbine:	86.3 km (53.6 mi)
Horiz. Field-of-View:	25.2°
Booster Station Dist.:	45.4 km (28.2 mi)



Figure D-10d

N06: Low Beach
Town of Nantucket, MA

SIMULATED VIEW - BOOSTER STATION

The above photograph is intended to be viewed 20 inches from the reader's eye when printed on 11"x17" paper and 13 inches from the reader's eye when printed on 8 1/2" x 11" paper. Viewing on an uncalibrated video monitor can alter intended lightness, color and/or contrast of the image.



Photographic Simulations

Photo Location Map

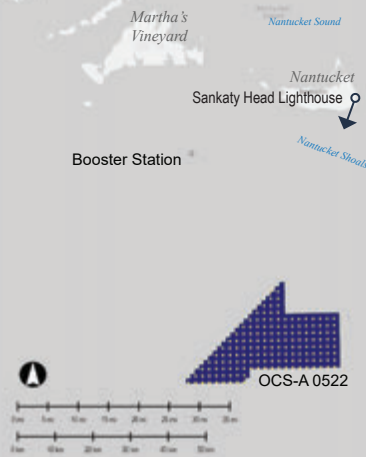


Photo Data

Date/Time:	05-May-2022 / 10:15
Light Conditions:	Side Light
Camera:	Canon 6D Mark II
Focal Length:	50mm (full frame)

Photo Location

Latitude:	41° 17' 03.8823" N
Longitude:	65° 57' 58.6735" W
Elevation (+/-):	45.7 m (150 ft)
Nearest Turbine:	57.1 km (35.5 mi)
Farthest Turbine:	89.3 km (55.5 mi)
Horiz. Field-of-View:	24.4°
Booster Station Dist.:	46.5 km (28.9 mi)

Meteorological Data

Temperature:	60°F
Humidity:	67%
Visibility:	10 mi
Weather Condition:	Fair

Visual Setting

SCALCA:	Coastal Bluffs
Resource Type:	Historic Site
Use Type:	Scenic/Cultural Tourism
Viewer Types:	Scenery-oriented Visitors

Figure D-11a
 N02: Sankaty Head Lighthouse
 Town of Nantucket, MA

EXISTING VIEW

The above photograph is intended to be viewed 20 inches from the reader's eye when printed on 11"x17" paper and 13 inches from the reader's eye when printed on 8 1/2" x 11" paper. Viewing on an uncalibrated video monitor can alter intended lightness, color and/or contrast of the image.





Photographic Simulations

Photo Location Map

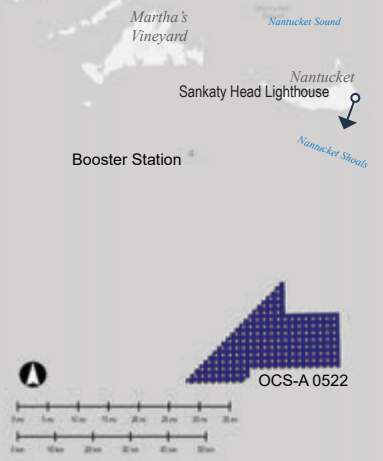


Photo Data

Date/Time:	05-May-2022 / 10:15
Light Conditions:	Side Light
Camera:	Canon 6D Mark II
Focal Length:	50mm (full frame)

Photo Location

Latitude:	41° 17' 03.8823" N
Longitude:	65° 57' 58.6735" W
Elevation (+/-):	45.7 m (150 ft)
Nearest Turbine:	57.1 km (35.5 mi)
Farthest Turbine:	89.3 km (55.5 mi)
Horiz. Field-of-View:	24.4°
Booster Station Dist.:	46.5 km (28.9 mi)

Visible Portion of Closest WTG

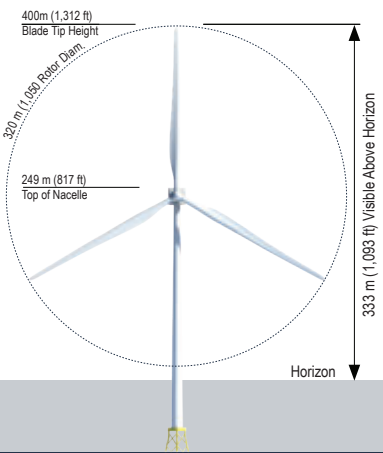


Figure D-11b
 N02: Sankaty Head Lighthouse
 Town of Nantucket, MA

SIMULATED VIEW - WTG

The above photograph is intended to be viewed 20 inches from the reader's eye when printed on 11"x17" paper and 13 inches from the reader's eye when printed on 8 1/2" x 11" paper. Viewing on an uncalibrated video monitor can alter intended lightness, color and/or contrast of the image.





Photographic Simulations

Photo Location Map

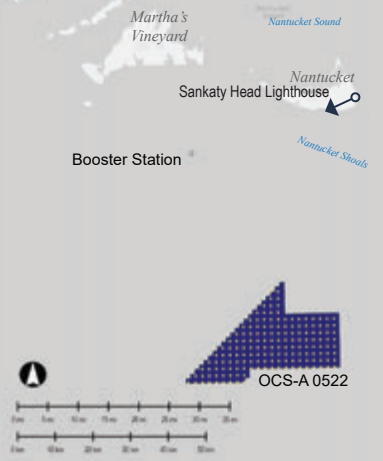


Photo Data

Date/Time:	05-May-2022 / 10:18
Light Conditions:	Side Light
Camera:	Canon 6D Mark II
Focal Length:	50mm (full frame)

Photo Location

Latitude:	41° 17' 03.8823" N
Longitude:	65° 57' 58.6735" W
Elevation (+/-):	45.7 m (150 ft)
Nearest Turbine:	57.1 km (35.5 mi)
Farthest Turbine:	89.3 km (55.5 mi)
Horiz. Field-of-View:	24.4°
Booster Station Dist.:	46.5 km (28.9 mi)

Meteorological Data

Temperature:	60°F
Humidity:	67%
Visibility:	10 mi
Weather Condition:	Fair

Visual Setting

SCALCA:	Coastal Bluffs
Resource Type:	Historic Site
Use Type:	Scenic/Cultural Tourism
Viewer Types:	Scenery-oriented Visitors

Figure D-11c
 N02: Sankaty Head Lighthouse
 Town of Nantucket, MA

EXISTING VIEW

The above photograph is intended to be viewed 20 inches from the reader's eye when printed on 11"x17" paper and 13 inches from the reader's eye when printed on 8 1/2" x 11" paper. Viewing on an uncalibrated video monitor can alter intended lightness, color and/or contrast of the image.





Photographic Simulations

Photo Location Map

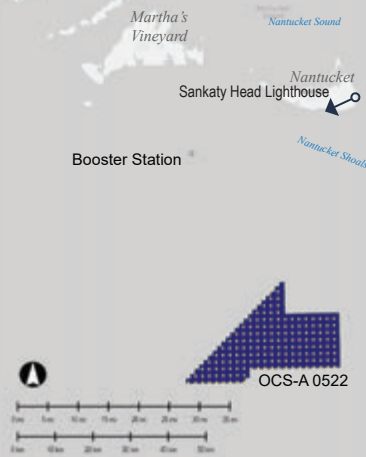


Photo Data

Date/Time:	05-May-2022 / 10:18
Light Conditions:	Side Light
Camera:	Canon 6D Mark II
Focal Length:	50mm (full frame)

Photo Location

Latitude:	41° 17' 03.8823" N
Longitude:	65° 57' 58.6735" W
Elevation (+/-):	45.7 m (150 ft)
Nearest Turbine:	57.1 km (35.5 mi)
Farthest Turbine:	89.3 km (55.5 mi)
Horiz. Field-of-View:	24.4°
Booster Station Dist.:	46.5 km (28.9 mi)

Figure D-11d
 N02: Sankaty Head Lighthouse
 Town of Nantucket, MA

SIMULATED VIEW - BOOSTER STATION

The above photograph is intended to be viewed 20 inches from the reader's eye when printed on 11"x17" paper and 13 inches from the reader's eye when printed on 8 1/2" x 11" paper. Viewing on an uncalibrated video monitor can alter intended lightness, color and/or contrast of the image.



Photographic Simulations

Photo Location Map

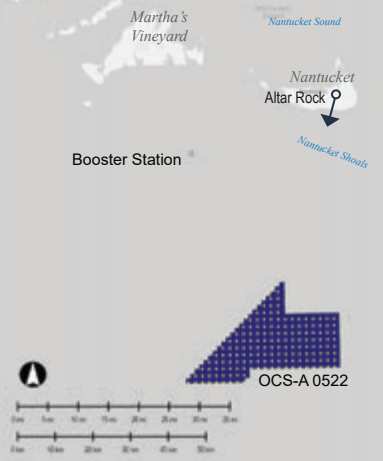


Photo Data

Date/Time:	13-Apr-2022 / 08:30
Light Conditions:	Side Light
Camera:	Canon 6D Mark II
Focal Length:	50mm (full frame)

Photo Location

Latitude:	41° 16' 53.7145" N
Longitude:	70° 01' 29.8239" W
Elevation (+/-):	30.8 m (101 ft)
Nearest Turbine:	55.2 km (34.3 mi)
Farthest Turbine:	86.7 km (53.9 mi)
Horiz. Field-of-View:	26.3°
Booster Station Dist.:	41.9 km (26.0 mi)

Meteorological Data

Temperature:	58°F
Humidity:	51%
Visibility:	10 mi
Weather Condition:	Fair

Visual Setting

SCA/LCA:	Inland Sand Plain Grassland/Scrub
Resource Type:	Trail
Use Type:	Scenic Recreation
Viewer Types:	Scenery-oriented Visitors Recreation-oriented Visitors

Figure D-12a
N01: Altar Rock
Town of Nantucket, MA

EXISTING VIEW

The above photograph is intended to be viewed 20 inches from the reader's eye when printed on 11"x17" paper and 13 inches from the reader's eye when printed on 8 1/2" x 11" paper. Viewing on an uncalibrated video monitor can alter intended lightness, color and/or contrast of the image.



Photographic Simulations

Photo Location Map

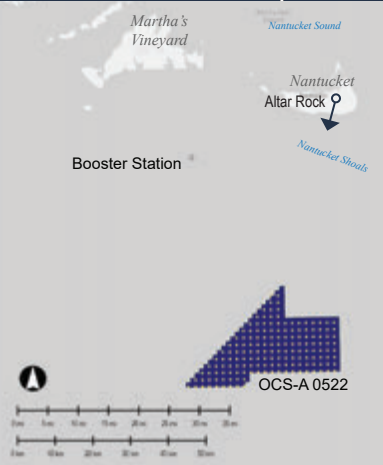


Photo Data

Date/Time:	13-Apr-2022 / 08:30
Light Conditions:	Side Light
Camera:	Canon 6D Mark II
Focal Length:	50mm (full frame)

Photo Location

Latitude:	41° 16' 53.7145" N
Longitude:	70° 01' 29.8239" W
Elevation (+/-):	30.8 m (101 ft)
Nearest Turbine:	55.2 km (34.3 mi)
Farthest Turbine:	86.7 km (53.9 mi)
Horiz. Field-of-View:	26.3°
Booster Station Dist.:	41.9 km (26.0 mi)

Visible Portion of Closest WTG

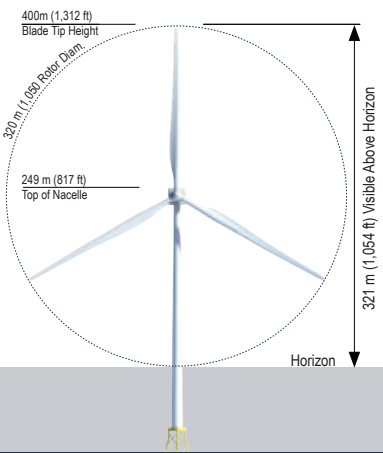


Figure D-12b
 N01: Altar Rock
 Town of Nantucket, MA

SIMULATED VIEW - WTG

The above photograph is intended to be viewed 20 inches from the reader's eye when printed on 11"x17" paper and 13 inches from the reader's eye when printed on 8 1/2" x 11" paper. Viewing on an uncalibrated video monitor can alter intended lightness, color and/or contrast of the image.



Photographic Simulations

Photo Location Map

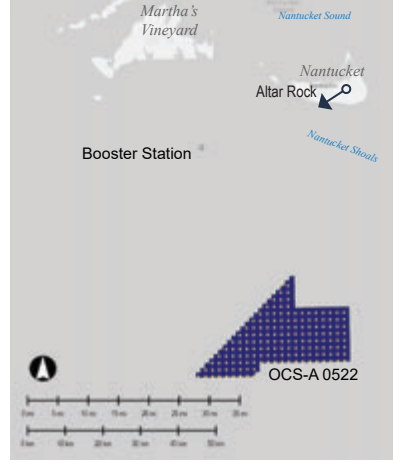


Photo Data

Date/Time:	13-Apr-2022 / 08:30
Light Conditions:	Side Light
Camera:	Canon 6D Mark II
Focal Length:	50mm (full frame)

Photo Location

Latitude:	41° 16' 53.7145" N
Longitude:	70° 01' 29.8239" W
Elevation (+/-):	30.8 m (101 ft)
Nearest Turbine:	55.2 km (34.3 mi)
Farthest Turbine:	86.7 km (53.9 mi)
Horiz. Field-of-View:	26.3°
Booster Station Dist.:	41.9 km (26.0 mi)

Meteorological Data

Temperature:	58°F
Humidity:	51%
Visibility:	10 mi
Weather Condition:	Fair

Visual Setting

SCALCA:	Inland Sand Plain Grassland/Scrub
Resource Type:	Trail
Use Type:	Scenic Recreation
Viewer Types:	Scenery-oriented Visitors Recreation-oriented Visitors

Figure D-12c
N01: Altar Rock
Town of Nantucket, MA

EXISTING VIEW

The above photograph is intended to be viewed 20 inches from the reader's eye when printed on 11"x17" paper and 13 inches from the reader's eye when printed on 8 1/2" x 11" paper. Viewing on an uncalibrated video monitor can alter intended lightness, color and/or contrast of the image.



Photographic Simulations

Photo Location Map

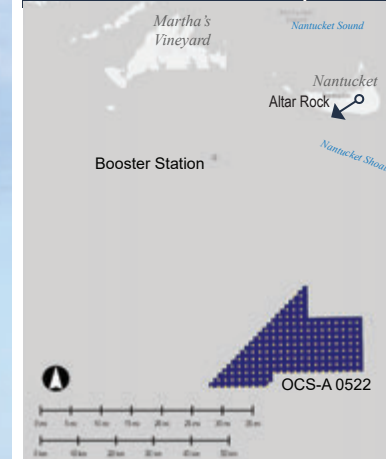


Photo Data

Date/Time:	13-Apr-2022 / 08:30
Light Conditions:	Side Light
Camera:	Canon 6D Mark II
Focal Length:	50mm (full frame)

Photo Location

Latitude:	41° 16' 53.7145" N
Longitude:	70° 01' 29.8239" W
Elevation (+/-):	30.8 m (101 ft)
Nearest Turbine:	55.2 km (34.3 mi)
Farthest Turbine:	86.7 km (53.9 mi)
Horiz. Field-of-View:	26.3°
Booster Station Dist.:	41.9 km (26.0 mi)



Figure D-12d

N01: Altar Rock
Town of Nantucket, MA

SIMULATED VIEW - BOOSTER STATION

The above photograph is intended to be viewed 20 inches from the reader's eye when printed on 11"x17" paper and 13 inches from the reader's eye when printed on 8 1/2" x 11" paper. Viewing on an uncalibrated video monitor can alter intended lightness, color and/or contrast of the image.