



## Vineyard Wind Supplement to the Draft Environmental Impact Statement Public Meetings

---

**Welcome, thank you for joining us today.**

- The meeting will begin at the top of the hour
- For audio please dial 1-888-606-7043, participant code: **6516733**
- If you would like to provide public comment, please press \*1 and wait. The live Operator will enter your name in the queue
- Before we begin, you can visit the poster stations at <https://www.boem.gov/Vineyard-Wind-SEIS-Virtual-Meeting>



# Meeting Agenda And Process

- **Welcome and logistics**
- **Presentation**
  - Project Overview
  - NEPA/EIS Process Overview
  - SEIS Findings
  - Next Steps in Process
- **Public Comments\*\***
- **Questions & Answers**

**Note:** *This meeting is being recorded and will be posted on BOEM's website here:*

*<https://www.boem.gov/Vineyard-Wind-SEIS-Virtual-Meeting>*

*\*\*Please press \*1 to enter the queue for public testimony and speak to our live operator*

## Zoom Tips

- **Q&A** – Ask a question. We will address questions during the Q&A portion of the meeting
- **Chat** – Use this for any technical issues
- **Raise Hand** – Attendees will only use this function if we call on you

NOTE: Participant Audio and Video are turned off for this meeting. (Participants are muted by the operator. Each person providing comment will be taken off mute for their allotted time.)



# BOEM

Bureau of Ocean Energy  
Management

## Vineyard Wind Supplement to the Draft Environmental Impact Statement (SEIS)

### Virtual Public Meeting

Jennifer Bucatari, Environmental Coordinator



- BOEM Leasing & Environmental Review Processes
- Commercial Fisheries and For-hire Recreational Fishing
- Marine Mammals & Underwater Noise
- Cumulative Impacts
- Navigation
- Impact Definitions
- Impact Distance for Monopiles & Jackets
- Proposed Action & Alternatives
- Benthic Habitat
- Maps of Project Area
- Avian Impact
- Historic Preservation
- How to Comment

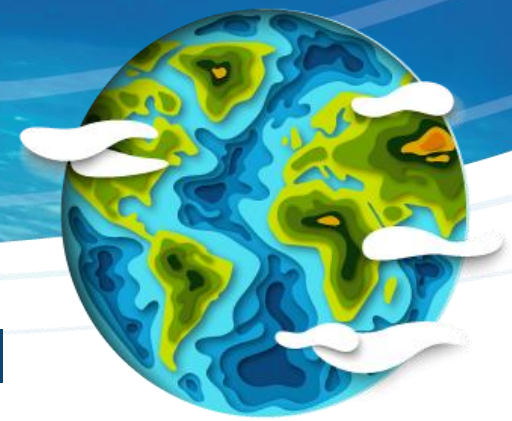
- Navigating the Supplement to the Draft Environmental Impact Statement (SEIS) and Virtual Meeting Room
- Navigation
- Cultural, Historic and Archaeological Resources
- Marine Mammals and Sea Turtles
- Benthic
- Commercial and For-Hire Recreational Fishing
- Birds
- Cumulative Scenario



# National Environmental Policy Act (NEPA)

- **NEPA** is a procedural law requiring Federal agencies to assess the environmental effects of their proposed action(s), and reasonable alternatives, prior to making decisions.
- The **NEPA** process collects relevant information for the decision maker to either approve, approve with conditions or disapprove the plan.

# Environmental Impact Statement (EIS)

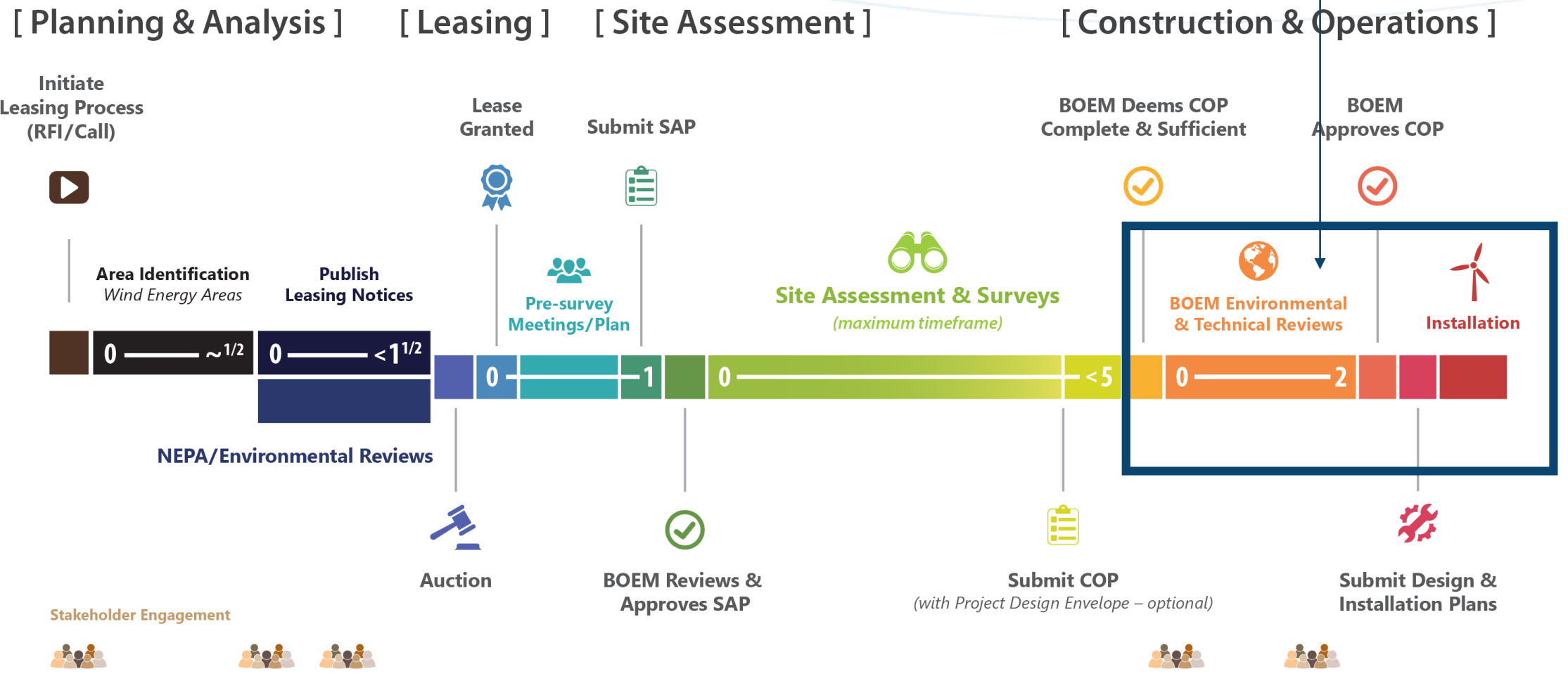


- Must be prepared if agency is proposing a **major federal action** significantly affecting the quality of the human environment
- Outline the impact of a proposed project on its surrounding environment
- Public scoping required and public comment period required for Draft EIS
- Analysis of reasonable alternatives and cumulative effects required



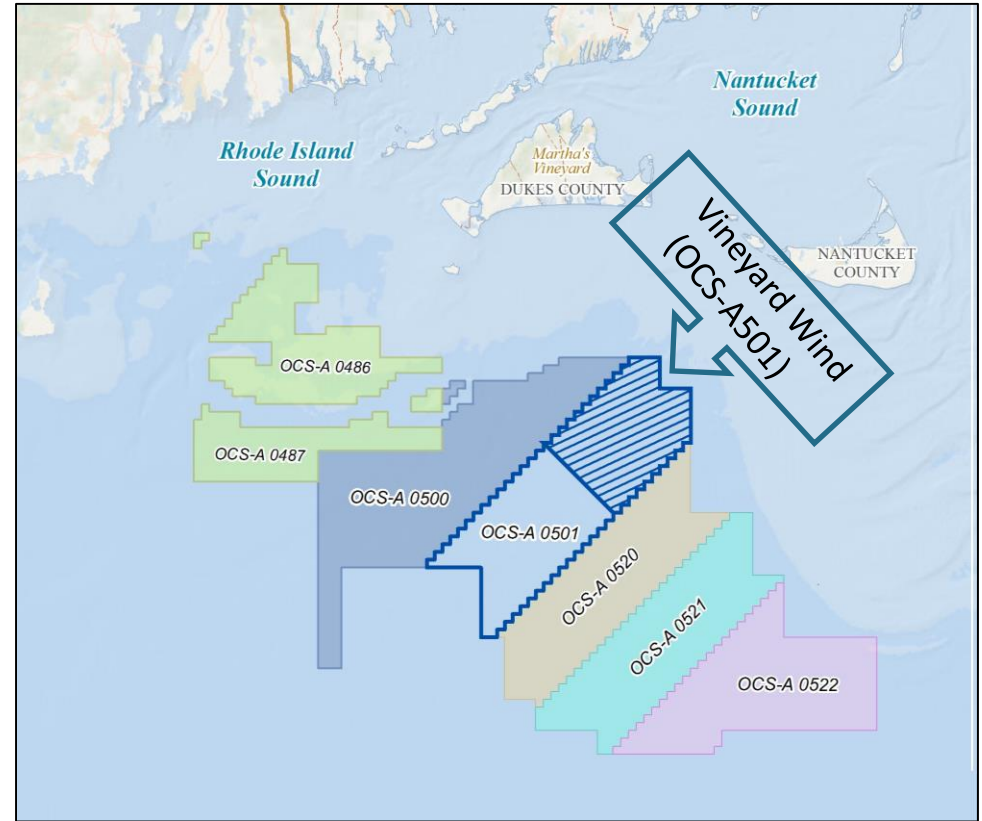
# Where is Vineyard Wind in the Renewable Energy Process?

You are here



# Vineyard Wind 1 Proposed Project Location

- Closest point to land is southeast of Martha's Vineyard (12 nautical miles or further)
- Cable landfall at one of two possible locations on Cape Cod



# Project Background

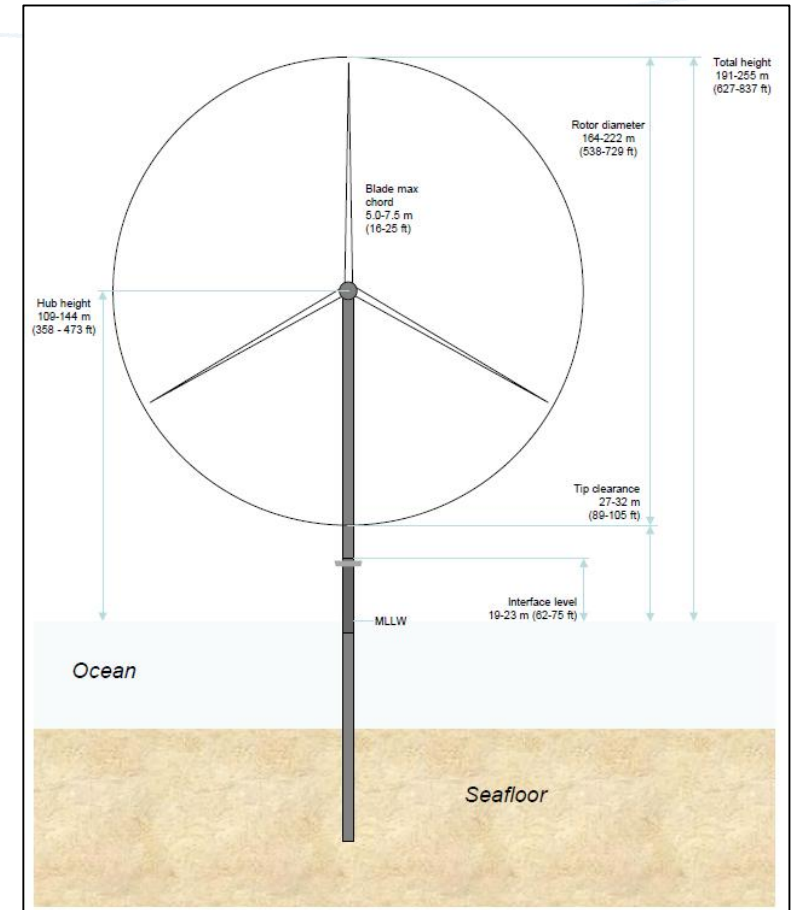
- BOEM issued lease to Vineyard Wind (VW) March 23, 2015
- VW submitted Construction and Operations Plan (COP) to BOEM December 2017
- Draft Environmental Impact Statement (DEIS) published December 7, 2018
- Public Hearings held February 11-15, 2019
- Comments from public and stakeholders requested an expanded cumulative analysis and analysis of fishing data previously unavailable to BOEM
- Updates to Construction and Operations Plan were submitted on January 31, 2020 and March 9, 2020
- BOEM developed the SEIS to address: stakeholder feedback on the Draft EIS, an expanded cumulative analysis, new fishing data, a new Alternative, and project changes





# Vineyard Wind Project Overview and Construction and Operations Plan Updates

- 8-14 Megawatt (MW) wind turbines
- 800 MW total capacity
- 106 wind turbine locations (up to 100 wind turbines)
- Either all monopile foundations or 50% monopile and 50% jacket foundations
- Updates to Construction and Operations Plan involve:
  - Change to the maximum wind turbine generator (WTG) design envelope parameter to be up to 14 MW
  - Expansion of previously proposed onshore substation site
- Does not alter minimum WTG design envelope parameters



# Notice of Availability (NOA) of SEIS

- Published in *Federal Register* June 12, 2020
- Five Public Meetings:
  - Friday, June 26, 2020 | 5:00 pm
  - Tuesday, June 30, 2020 | 1:00 pm
  - Thursday, July 2, 2020 | 5:00 pm
  - Tuesday, July 7, 2020 | 1:00 pm
  - Thursday, July 9, 2020 | 5:00 pm
- 45-day public comment period closes July 27, 2020
- Additional information can be found at [www.boem.gov/vineyard-wind](http://www.boem.gov/vineyard-wind)

- **Types of information BOEM is looking for:**
  - Accuracy of information
  - Adequacy of methodology or assumptions used in the environmental analysis
  - New information relevant to the analysis or that would change the conclusions
  - Different source of credible research
  - Where clarification is needed



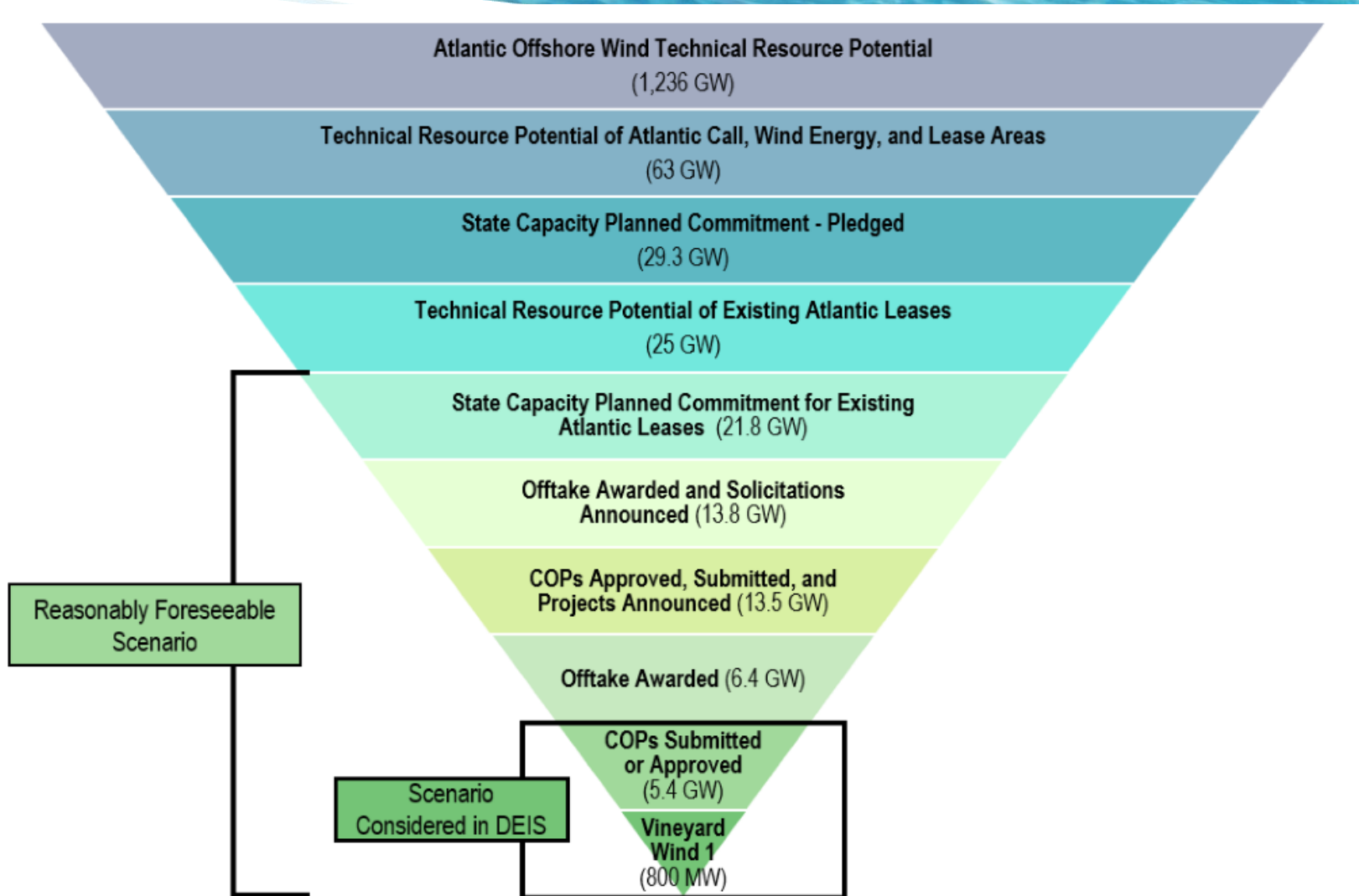
# Notable Sections of the SEIS

In SEIS...	You can find...
Executive Summary	A high-level summary of the proposed Project, alternatives and the potential impacts of the project for each resource and alternative
Chapter 1	The Purpose and Need Statement, an introduction to the project, and a summary of the cumulative impact scenario
Chapter 2	Overview of Alternatives Considered for Further Analysis
Chapter 3	Analysis of the environmental consequences of the Proposed Action and Action Alternatives and the No Action Alternative*
Appendix A	Details of the cumulative impact scenario, and the environmental analysis of resources with minor impacts (e.g., birds, air and water quality)
Appendix D	Alternatives considered but not analyzed in detail, consultation and coordination
Appendix E	Project Design Envelope and maximum case scenario by resource area

\*To comply with page limit goals under Secretarial Order 3355, for resources where the direct and indirect effects of the Proposed Project would be no greater than minor, the environmental analysis for these resources have been moved to Appendix A.



# Scope of Future Possible Development of Offshore Wind



# Proposed Action

	Alternative	Description	Reason for Alternative
<b>A</b>	<b>PROPOSED ACTION</b>	The construction, operation, maintenance, and eventual decommissioning of an up to 800 MW wind energy facility on the OCS offshore Massachusetts within the proposed Project area and associated export cables would occur within the range of design parameters outlined in the Vineyard Wind Construction and Operations Plan, subject to applicable mitigation measures.	Analysis of the project proposed by Vineyard Wind LLC.





# Alternatives Analyzed in Detail

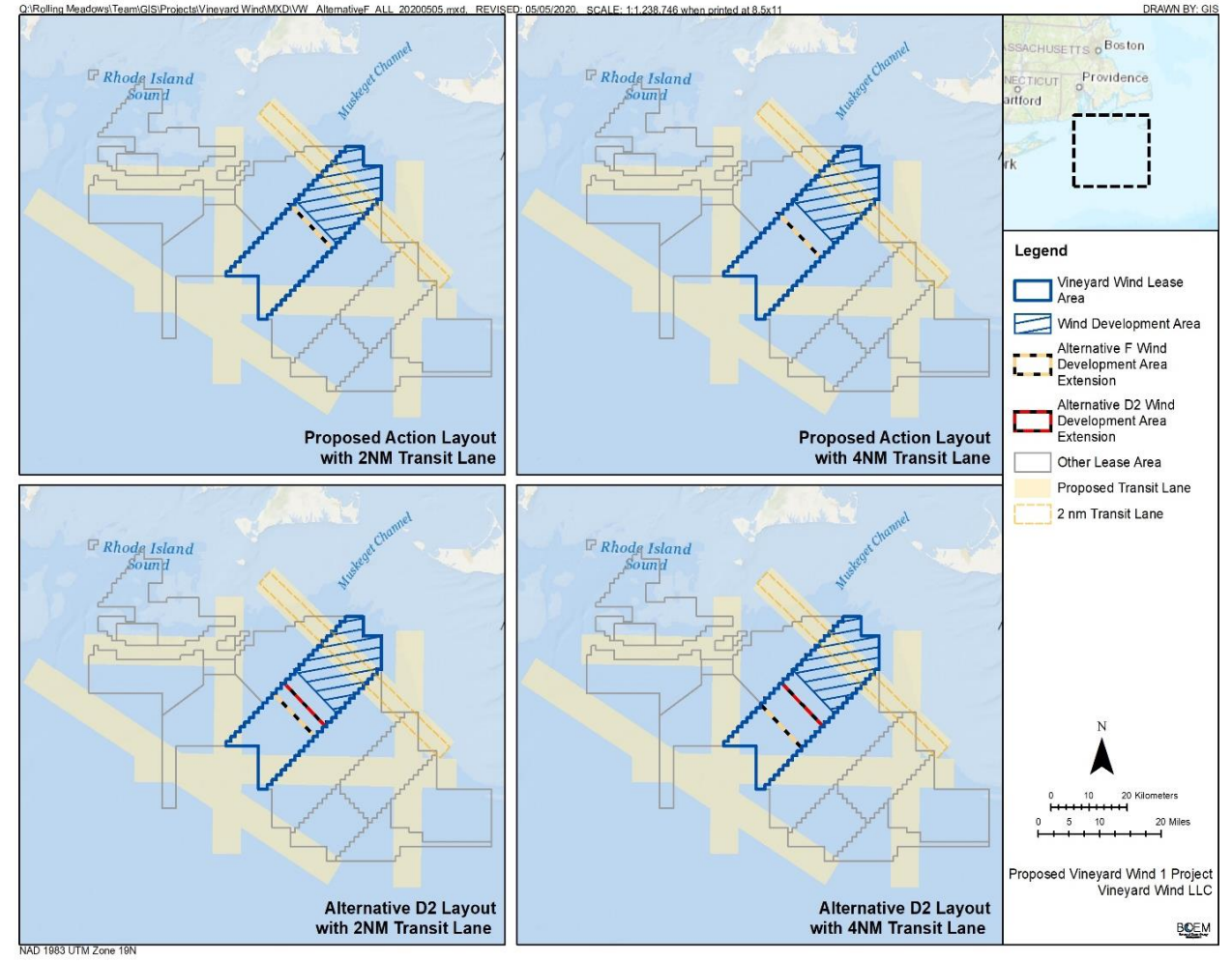
	Alternative	Description
<b>B</b>	<b>Covell's Beach Cable Landfall</b>	Same as the Proposed Action except the New Hampshire Avenue landfall location option presented in the COP would not be used, and the cable landfall would be limited to Covell's Beach.
<b>C</b>	<b>No Surface Occupancy in the Northernmost Portion of the Project Area</b>	Same as the Proposed Action except no surface occupancy would occur in the northernmost portion of the proposed Project area.
<b>D1</b>	<b>One Nautical Mile Wind Turbine Spacing</b>	Same as the Proposed Action except the wind turbine generators (WTGs) would have a minimum spacing of 1 nautical mile between them and the lanes between turbines would also be a minimum of 1 nautical mile.
<b>D2</b>	<b>East-West and One Nautical Mile Wind Turbine Layout</b>	Same as the Proposed Action except the wind turbine layout would be arranged in an east-west orientation and all WTGs in the east-west direction would have a minimum spacing of 1 nautical mile between them to allow for vessels to travel in an unobstructed path between rows of turbines in an east-west direction.
<b>E</b>	<b>Reduced Project Size</b>	Same as the Proposed Action, except the proposed Project would consist of no more than 84 WTGs.
<b>F</b>	<b>Vessel Transit Lane</b>	A vessel transit lane through the Wind Development Area (WDA) would be established in which no surface occupancy would occur. WTG locations displaced by the transit lane would not be eliminated from consideration but are assumed to move the proposed Project south of the WDA.
<b>G</b>	<b>No Action</b>	Proposed Project and associated activities as described in the Vineyard Wind COP would not be approved and the proposed construction, operation, maintenance, and decommissioning activities would not occur. Any potential environmental and socioeconomic costs and benefits associated with the proposed Project as described under Alternative A, the Proposed Action, would not occur.



# New Alternative (F)

## Responsible Offshore Development Alliance Layout Proposal:

- Proposal for BOEM to consider the inclusion of transit lanes with a 1 NM x 1 NM / East-West layout in Rhode Island / Massachusetts lease areas
- Addressed through addition of Alternative F





# Environmental and Socioeconomic Resources

## Biological

- Marine Mammals
- Sea Turtles
- Finfish, Invertebrates, and Essential Fish Habitat
- Coastal Habitats
- Benthic Resources
- Avian and Bat Species



## Physical

- Air Quality
- Water Quality

## Socioeconomic

- Aesthetics and Visual Resources
- Commercial Fisheries and For-hire Recreational
- Cultural Resources
- Military Uses
- Navigation
- Environmental Justice
- Land Use and Coastal Infrastructure
- Tourism and Recreation
- Demographics and Employment







Resources	Proposed Action	Alternative B	Alternative C	Alternative D1	Alternative D2	Alternative E	Alternative F
Cultural, Historical, and Archaeological Resources: <i>Direct and Indirect Impacts</i>	<b>Negligible to moderate</b> , depending on the specific resource affected	<b>Negligible to moderate</b> , depending on the specific resource affected	<b>Negligible to moderate</b> , depending on the specific resource affected	<b>Negligible to moderate</b> , depending on the specific resource affected	<b>Negligible to moderate</b> , depending on the specific resource affected	<b>Minor to moderate</b> , depending on the specific resource affected	<b>Negligible to moderate</b> , depending on the specific resource affected
Cultural, Historical, and Archaeological Resources: <i>Cumulative Impacts</i>	<b>Moderate</b>	<b>Moderate</b>	<b>Moderate</b>	<b>Moderate</b>	<b>Moderate</b>	<b>Moderate</b>	<b>Moderate</b>
Recreation and Tourism: <i>Direct and Indirect Impacts</i>	<b>Negligible to moderate and negligible to minor beneficial</b>	<b>Negligible to moderate and negligible to minor beneficial</b>	<b>Negligible to moderate and negligible to minor beneficial</b>	<b>Negligible to moderate and negligible to minor beneficial</b>	<b>Negligible to moderate and negligible to minor beneficial</b>	<b>Negligible to moderate and negligible to minor beneficial</b>	<b>Negligible to moderate and negligible to minor beneficial</b>
Recreation and Tourism: <i>Cumulative Impacts</i>	<b>Moderate and minor beneficial</b>	<b>Moderate and minor beneficial</b>	<b>Moderate and minor beneficial</b>	<b>Moderate and minor beneficial</b>	<b>Moderate and minor beneficial</b>	<b>Moderate and minor beneficial</b>	<b>Moderate and minor beneficial</b>
Commercial Fisheries and For-Hire Recreational Fishing: <i>Direct and Indirect Impacts</i>	<b>Moderate</b>	<b>Moderate</b>	<b>Moderate</b>	<b>Moderate</b>	<b>Moderate</b>	<b>Moderate</b>	<b>Moderate</b>
Commercial Fisheries and For-Hire Recreational Fishing: <i>Cumulative Impacts</i>	<b>Major</b>	<b>Major</b>	<b>Major</b>	<b>Major</b>	<b>Major</b>	<b>Major</b>	<b>Major</b>



# Summary of Impacts

Resources	Proposed Action	Alternative B	Alternative C	Alternative D1	Alternative D2	Alternative E	Alternative F
Land Use and Coastal Infrastructure: <i>Direct and Indirect Impacts</i>	<b>Negligible to moderate and negligible to minor beneficial</b>	<b>Negligible to minor and negligible to minor beneficial</b>	<b>Negligible to moderate and negligible to minor beneficial</b>	<b>Negligible to moderate and negligible to minor beneficial</b>	<b>Negligible to moderate and negligible to minor beneficial</b>	<b>Negligible to moderate and negligible to minor beneficial</b>	<b>Negligible to moderate and negligible to minor beneficial</b>
Land Use and Coastal Infrastructure: <i>Cumulative Impacts</i>	<b>Minor and minor beneficial</b>	<b>Minor and minor beneficial</b>	<b>Minor and minor beneficial</b>	<b>Minor and minor beneficial</b>	<b>Minor and minor beneficial</b>	<b>Minor and minor beneficial</b>	<b>Minor and minor beneficial</b>
Navigation and Vessel Traffic: <i>Direct and Indirect Impacts</i>	<b>Negligible to moderate</b>	<b>Negligible to moderate</b>	<b>Negligible to moderate</b>	<b>Negligible to moderate</b>	<b>Negligible to moderate</b>	<b>Negligible to moderate</b>	<b>Negligible to moderate</b>
Navigation and Vessel Traffic: <i>Cumulative Impacts</i>	<b>Major</b>	<b>Major</b>	<b>Major</b>	<b>Major</b>	<b>Moderate</b>	<b>Major</b>	<b>Moderate to Major</b>



Resources	Proposed Action	Alternative B	Alternative C	Alternative D1	Alternative D2	Alternative E	Alternative F
Other Uses: Direct and <i>Indirect Impacts</i>	<b>Major</b> for scientific research and surveys, <b>minor to moderate</b> for military/national security uses, <b>negligible to minor</b> for aviation and air traffic, cables and pipelines, radar systems	<b>Major</b> for scientific research and surveys, <b>minor to moderate</b> for military/national security uses, <b>negligible to minor</b> impacts for aviation and air traffic, cables and pipelines, radar systems	<b>Major</b> impacts on scientific research and surveys, <b>minor to moderate</b> for military/national security uses, <b>negligible to minor</b> impacts for aviation and air traffic, cables and pipelines, radar systems	<b>Major</b> impacts on scientific research and surveys, <b>minor to moderate</b> for military/national security uses, <b>negligible to minor</b> impacts for aviation and air traffic, cables and pipelines, radar systems	<b>Major</b> impacts on scientific research and surveys, <b>minor to moderate</b> for military/national security uses, <b>negligible to minor</b> impacts for aviation and air traffic, cables and pipelines, radar systems	<b>Major</b> impacts on scientific research and surveys, <b>minor to moderate</b> for military/national security uses, <b>negligible to minor</b> impacts for aviation and air traffic, cables and pipelines, radar systems	<b>Major</b> impacts on scientific research and surveys, <b>minor to moderate</b> for military/national security uses, <b>negligible to minor</b> impacts for aviation and air traffic, cables and pipelines, radar systems
Other Uses: <i>Cumulative Impacts</i>	<b>Major</b> for military/national security uses and scientific research and surveys and <b>negligible to minor</b> for aviation and air traffic, cable and pipelines, and radar systems	<b>Major</b> for military/national security uses and scientific research and surveys and <b>negligible to minor</b> for aviation and air traffic, cable and pipelines, and radar systems	<b>Major</b> for military/national security uses and scientific research and surveys and <b>negligible to minor</b> for aviation and air traffic, cable and pipelines, and radar systems	<b>Major</b> for military/national security uses and scientific research and surveys and <b>negligible to minor</b> for aviation and air traffic, cable and pipelines, and radar systems	<b>Major</b> for scientific research and surveys, <b>moderate</b> for military/national security uses and <b>negligible to minor</b> for aviation and air traffic, cable and pipelines, and radar systems	<b>Major</b> for military/national security uses and scientific research and surveys and <b>negligible to minor</b> for aviation and air traffic, cable and pipelines, and radar systems	<b>Major</b> for scientific research and surveys, <b>moderate to major</b> for military/national security uses and <b>negligible to minor</b> for aviation and air traffic, cable and pipelines, and radar systems





# What Direct and Indirect Impacts did the SEIS find?

- For most resources, impacts were **Negligible to Moderate** with some **Major** short and long term impacts
- **Major** impacts for Environmental Justice and Other Uses (specific to scientific research surveys and military and national security uses).
- Some **Minor beneficial to Moderate beneficial** impacts for Coastal Habitats, Benthic Resources, Finfish, Invertebrates, and Essential Fish Habitats, Marine Mammals, Sea Turtles, Air Quality, Birds, Recreation and Tourism; Land Use and Coastal Infrastructure; and Demographics, Employment, and Economics.

# What Cumulative Impacts did the SEIS find?

- For most resources, cumulative impacts were **Minor to Moderate** with some **Major** short and long term impacts
- **Major** cumulative impacts for Commercial Fisheries, Navigation and Vessel Traffic and Other Uses, specifically scientific surveys and military and national security uses.
- Some **Minor beneficial** cumulative impacts (primarily Recreation and Tourism; Land Use and Coastal Infrastructure; and Demographics, Employment, and Economics)

# Remaining EIS Schedule

- **June/July 2020:** Hold public meetings
- **November 2020:** Publish Final EIS
- **December 2020:** Conclude consultations, publish Record of Decision



# Where Can I Find More Information?

- [www.boem.gov/vineyard-wind](http://www.boem.gov/vineyard-wind)
- Vineyard Wind's Construction and Operations Plan – updated June 2020
- DEIS and SEIS
- Virtual Meeting Room webpage
  - Posters
  - Presentations
  - Meeting registration link
  - FAQs

For more information on the Vineyard Wind project, visit  
[www.boem.gov/Vineyard-Wind](http://www.boem.gov/Vineyard-Wind)



BOEM.gov



# How to Comment by July 27, 2020



**At this public meeting** through testimony. Be sure to Press \*1 to speak to our live operator to have your name added to the queue.



**In writing to:**

Program Manager, Office of Renewable Energy Programs, Bureau of Ocean Energy Management, 45600 Woodland Road, Sterling, VA 20166



**Online at [www.regulations.gov](http://www.regulations.gov):** Search for Docket No. BOEM-2020-0005. Click on the “Comment Now!” button to the right of the document link. Enter your information and comment, then click “Submit.”



## Open for Public Comment

- Please limit comments to 5 minutes
- Operator will unmute your line
- Please state and spell your name
- For testimony more than 5 minutes:
  - you may submit your comments in writing
  - or get back into the queue after everyone has spoken.
- If you haven't done so already, Press \*1 and wait to speak to the operator to get added to the queue



## Questions and Answers

- If you have a question, please click on the Q&A icon at the bottom of your screen to send it to us
- We will read the questions and answers so those who are only on phone have same information
- We will not have Q&A available during public comment, so we can focus on those providing comments

Thank You for Joining Today!

## Public Comment Period Open Until July 27, 2020



### Public Meetings June 26, 30 and July 2, 7 and 9, 2020

For more information visit: <https://www.boem.gov/Vineyard-Wind-SEIS-Virtual-Meeting>



### In writing to:

Program Manager, Office of Renewable Energy Programs,  
Bureau of Ocean Energy Management,  
45600 Woodland Road, Sterling, Virginia 20166



**Online at regulations.gov:** Navigate to <http://www.regulations.gov>  
search for Docket No. BOEM-2020-0005.

Click on the “Comment Now!” button to the right of the document link.  
Enter your information and comment, then click “Submit.”