

# US Wind





## 1. US Offshore Wind Projects

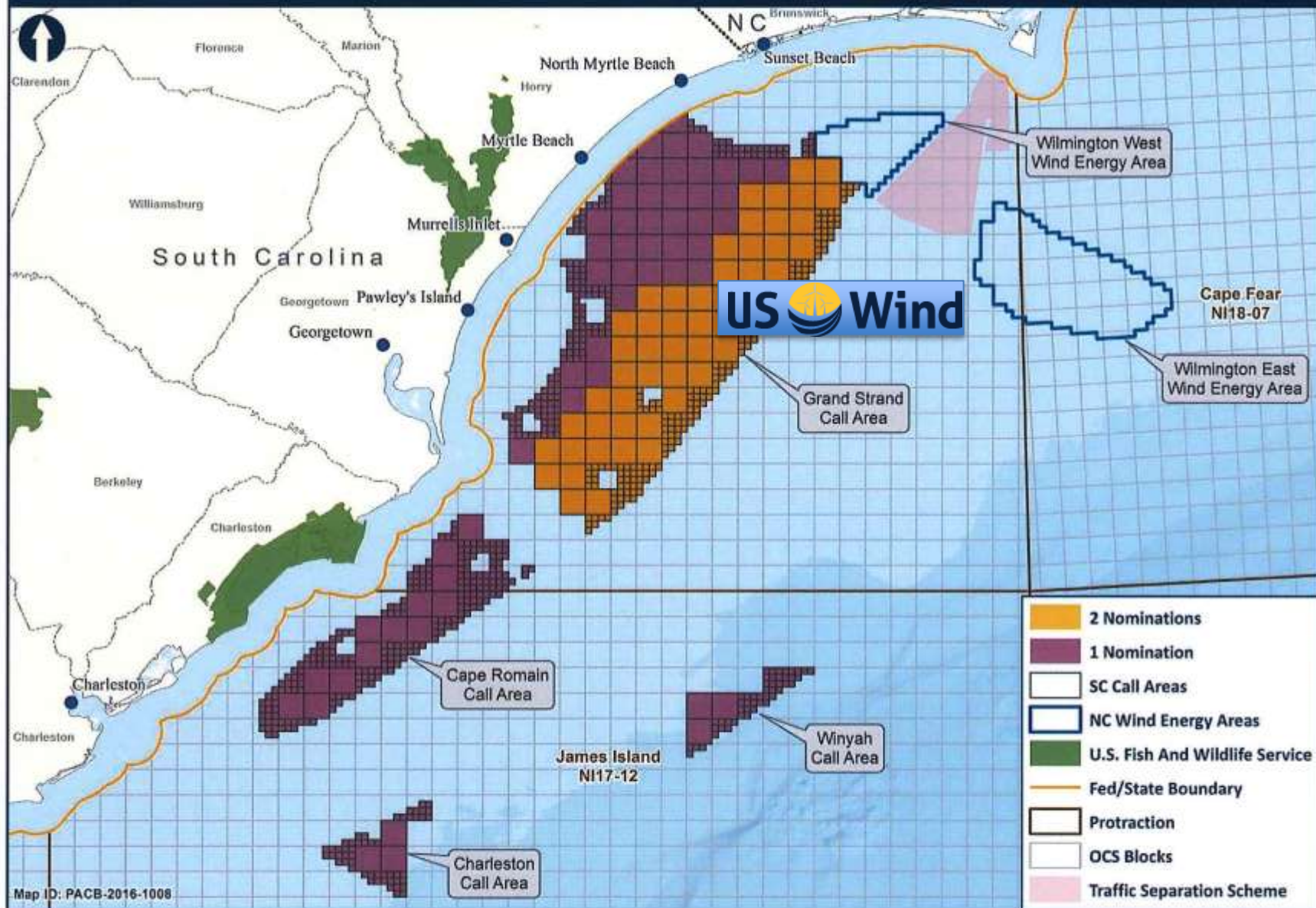


# South Carolina Nomination

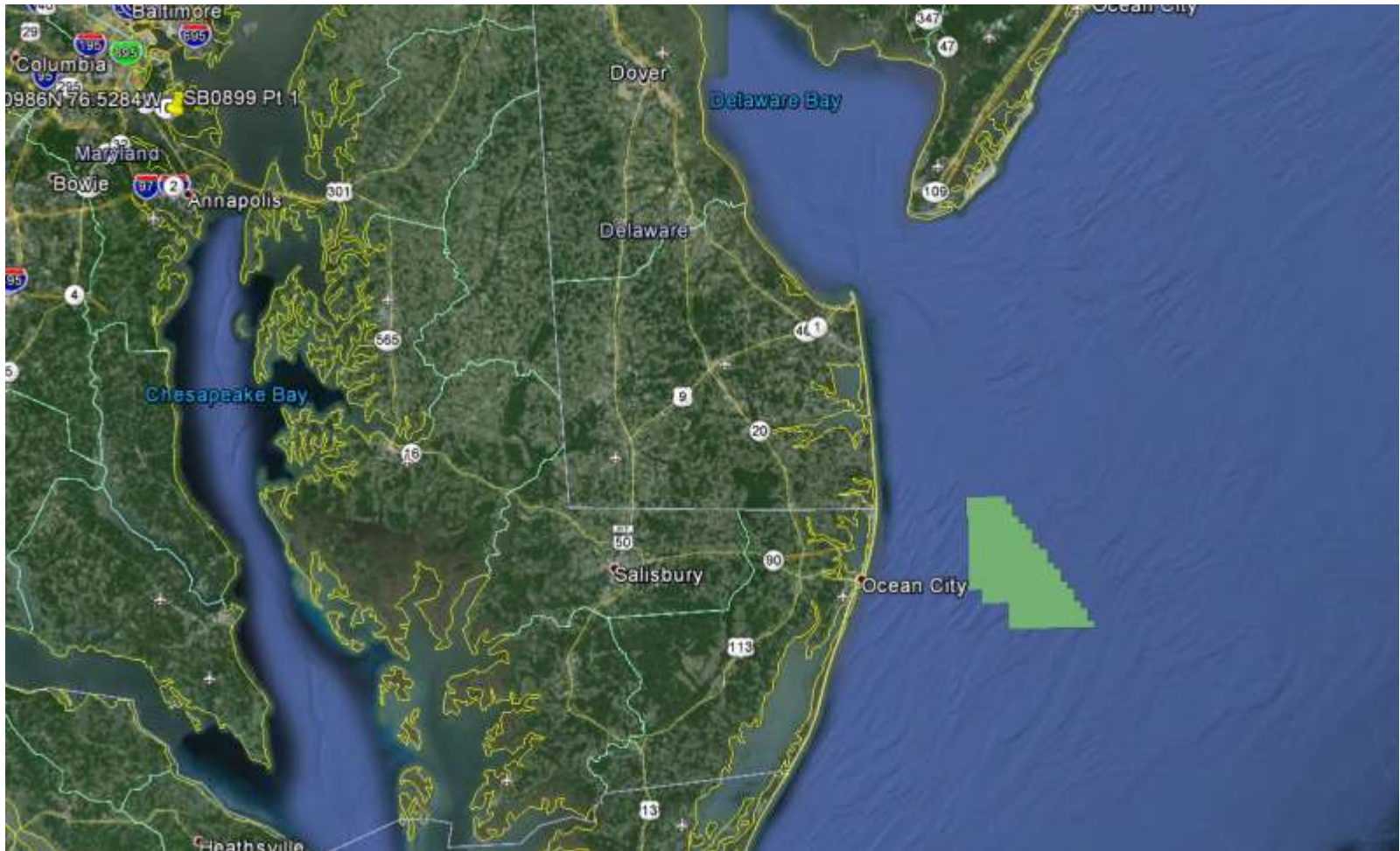


U.S. Department of the Interior  
Bureau of Ocean Energy Management  
Office of Renewable Energy Programs

## South Carolina Call Areas and Number of Nominations



# *Federal lease Area of MARYLAND WIND ENERGY AREA (WEA) 80,000 Acres*



**New  
Jersey**

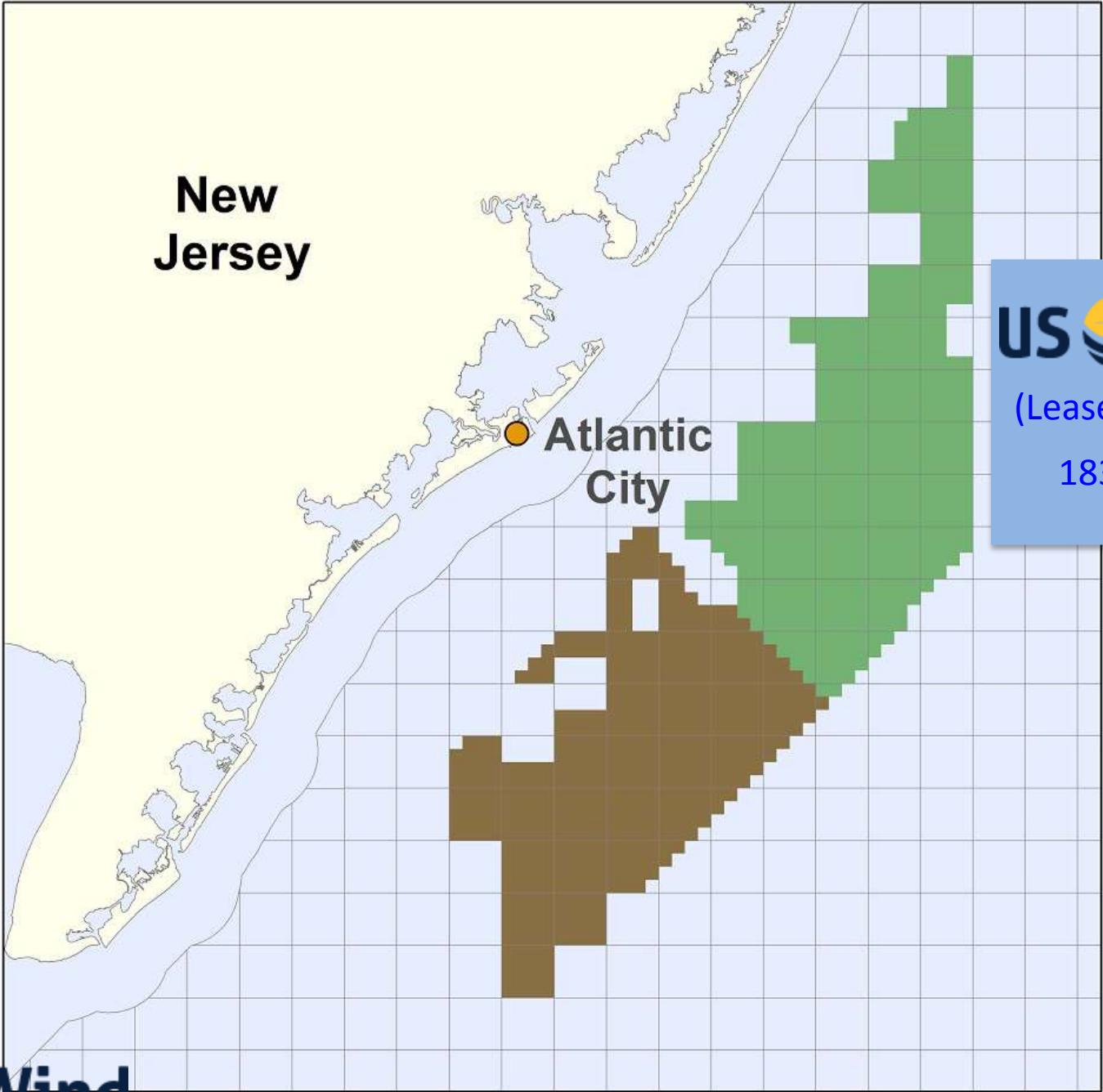
**Atlantic  
City**

**US Wind**

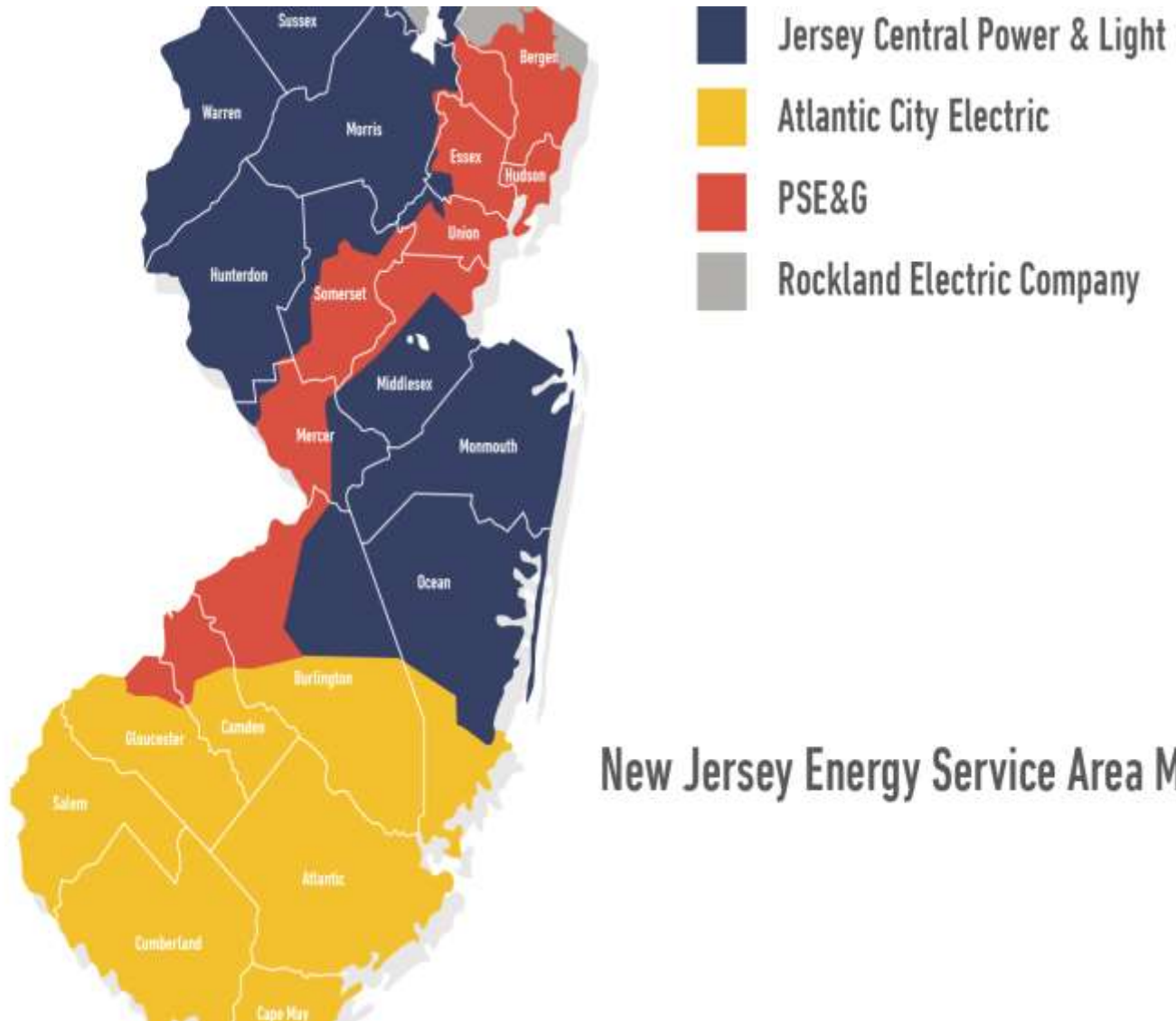
(Lease OCS-A 0499)

183,353 acres

**US Wind**



# Potential NJ Interconnection Regions



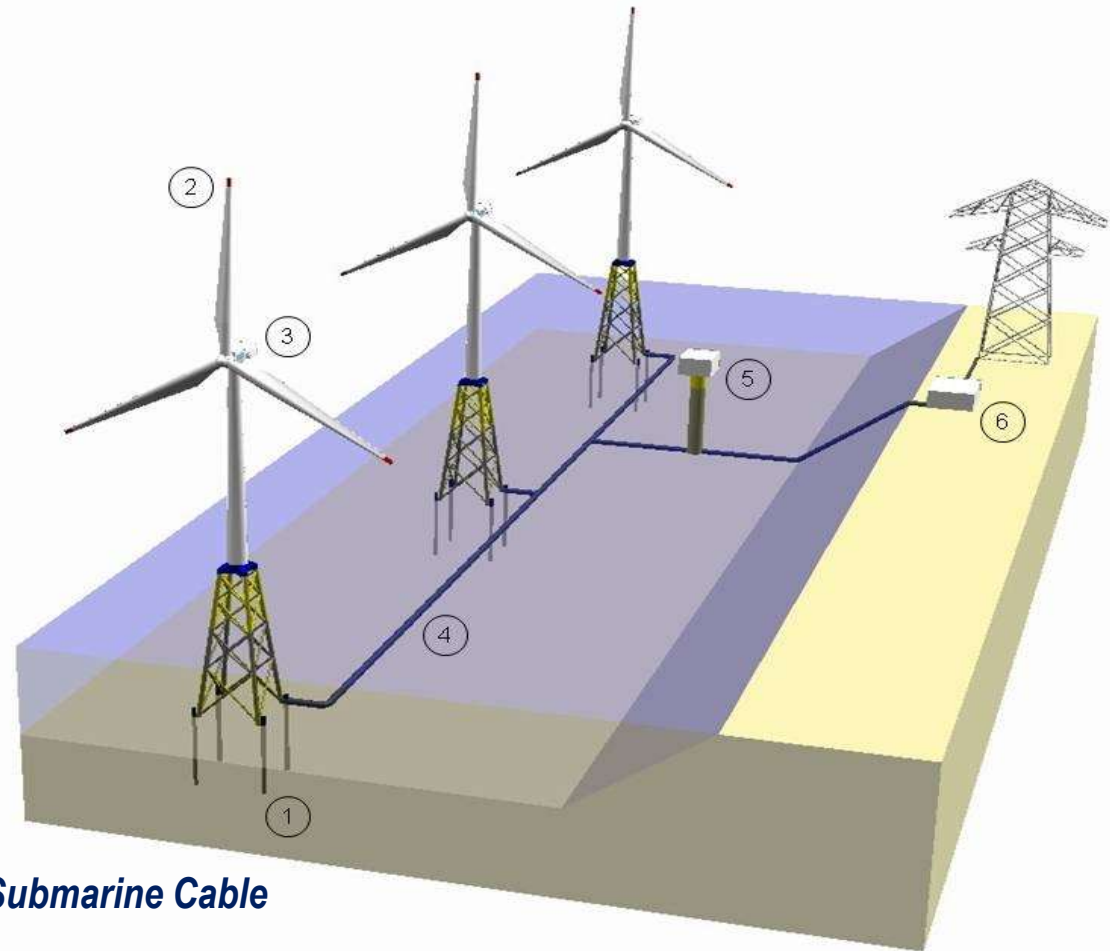
New Jersey Energy Service Area Map



## 2. Typical Wind Farm Activities and Design



# Offshore Wind Farm Basic Configuration



- 1. Foundation**
- 2. Wind Turbine Generator (WTG)**
- 3. Nacelle**
- 4. Inter-Turbine Submarine Cables**
- 5. Offshore Sub-Station & Export Submarine Cable**
- 6. On-Shore Grid Connection**



# Typical Foundations



*Mono-Pile*



*Standard Jacket*



*Twisted Jacket*

# Typical Marine Survey Activity in WEA



*The Shearwater has a complement of 20 crew members and will be conducting detailed geophysical surveys of the ocean floor in the Wind Energy Lease Area until approximately end-July 2015. The Shearwater employs equipment such as Side-scan Sonar, Magnetometer, a Sub-bottom Profiler and Bathymetric System to develop a detailed analysis to support engineering design support for project designs.*

*The Ocean Discovery has 50 crew and scientists & uses a 4-point mooring system and DP1 dynamic geo-positioning program to support accurate data collection using its GL100 heave compensated soil-coring system down to 250' to collect sediment core profiles. Vessel will operate until mid-July in the Lease Area on up to 12-core sites.*



# Typical Meteorological Tower





### 3. Brief Project Description-Maryland



# US Wind, Inc.- Maryland Project

- Project Description:
  - 12-Miles off of Ocean City, MD
  - Applying for 750MW with PJM
  - 248MW will use Maryland OREC
  - 187 Total Turbine Installations
  - In-Service Date of Q1 2020
  - 100% of Maryland Offshore Wind RPS Goals



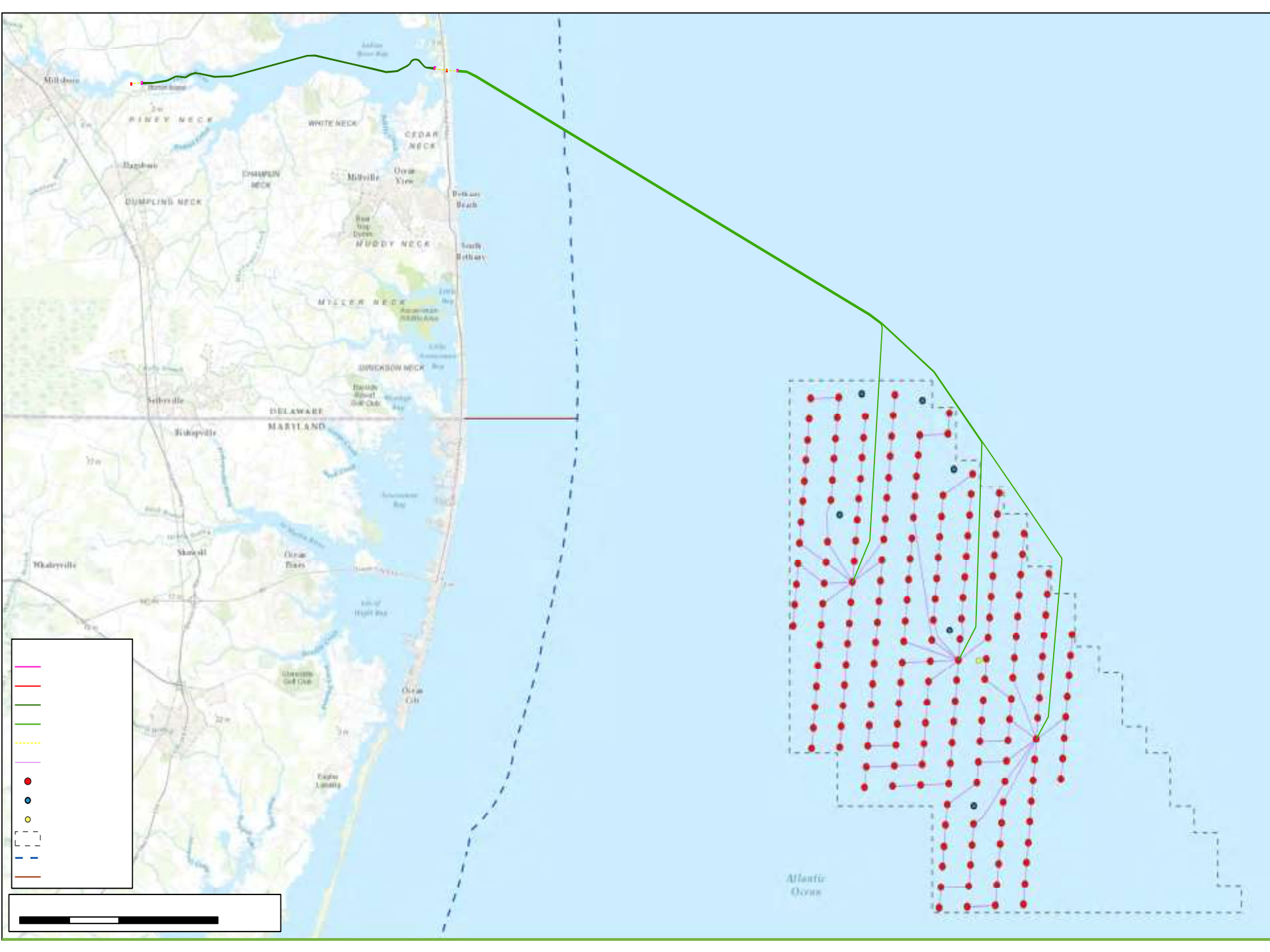
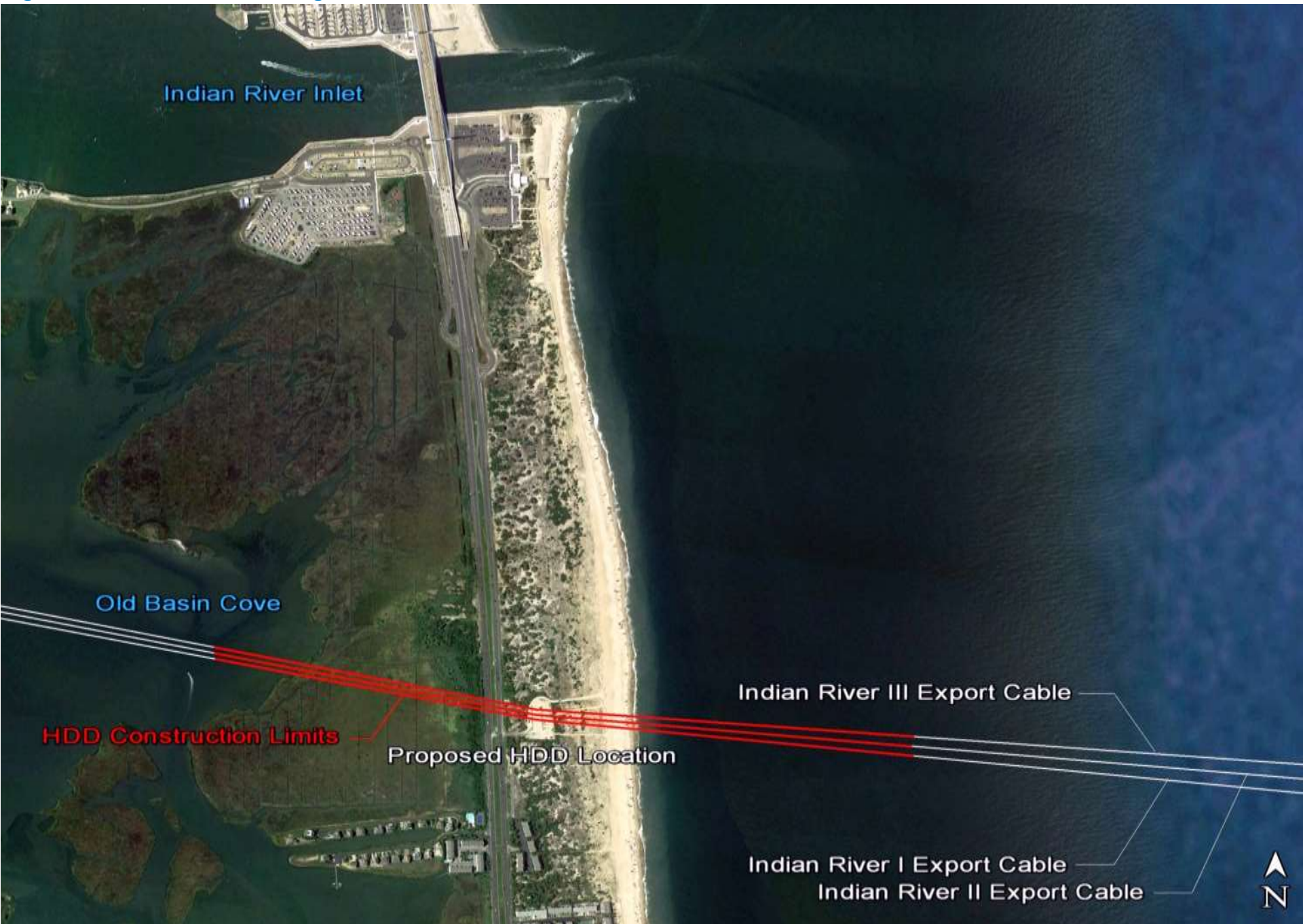
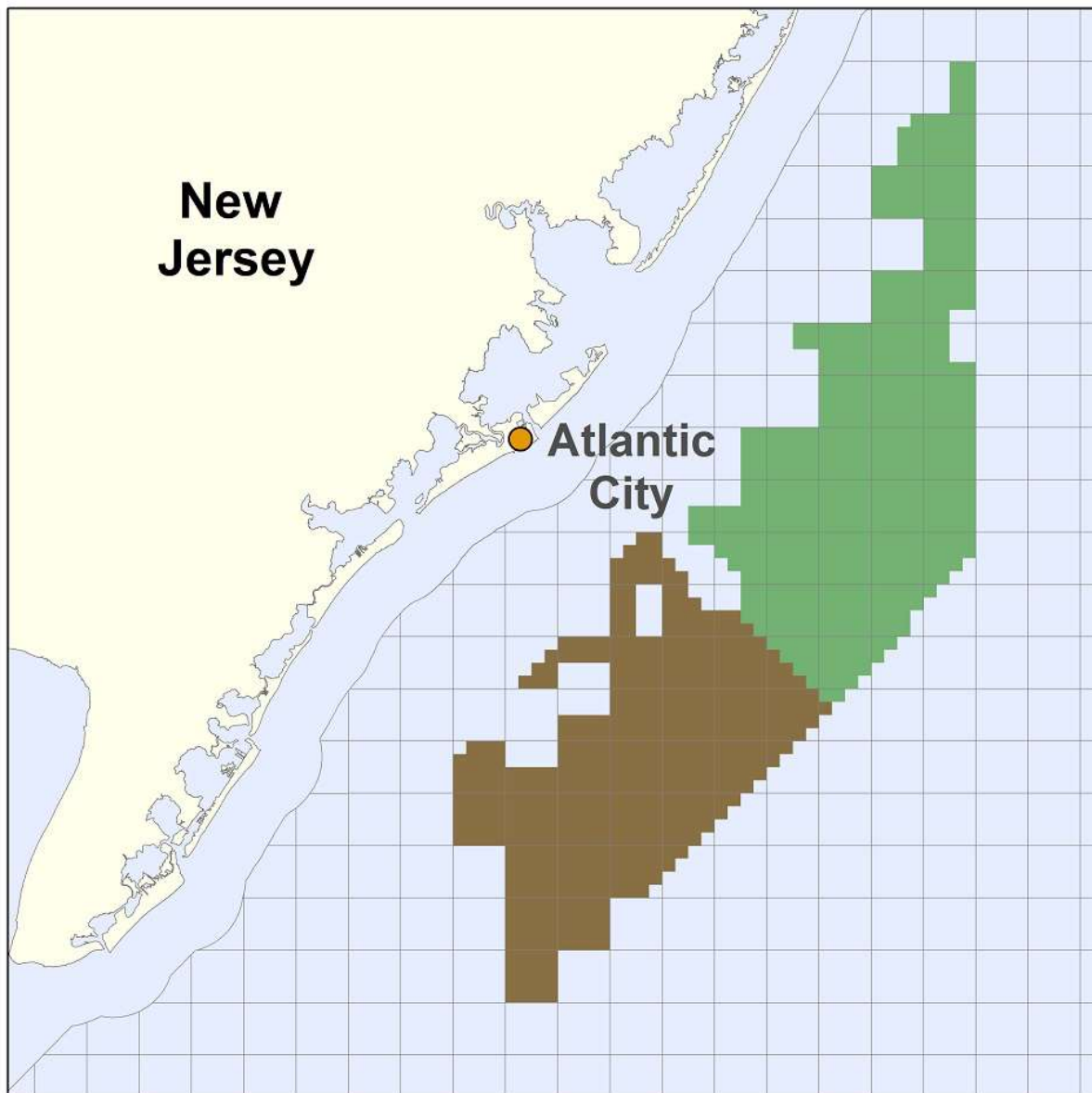


Figure 4.6: View of Inlet Region



# Enormous Potential to Realize NJ R/E Goals & Reduce Carbon Footprint





# US Wind

1 North Charles Street, Suite 2310  
Baltimore, MD 21201  
[www.uswindmaryland.com](http://www.uswindmaryland.com)

## **Paul Rich**

Director of Project Development  
(443) 467-2685  
[p.rich@uswindmaryland.com.com](mailto:p.rich@uswindmaryland.com)

