

Monterrey Shipwreck

July 2013

Melanie Damour

**Marine Archaeologist
Environmental Studies Coordinator**

Gulf of Mexico OCS Region

Melanie.Damour@boem.gov

Preliminary Results

© 2013 All Rights Reserved

Roman Lab, University of Rhode Island,

Ocean Exploration Trust,

Meadows Center for Water and the Environment, Texas State University,



Interdisciplinary Research at the Site of Three 19th Century Deepwater Shipwrecks

SDP Page Number	Discipline	Regional Ranking	Study Title
125	HE	1	Explosive Removal of Structures: Fisheries Impact Assessment
127	SE	2	Coastal Land Loss and Oil & Gas Infrastructure
129	PO	3	Chemical Products Used in Gulf of Mexico Oil & Gas Operations: Inventory, Disposal, and Risks
131	SE	4	Interdisciplinary Research at the Site of Three 19th Century Deepwater Shipwrecks: the Monterrey Shipwrecks
133	AQ	5	Fugitive Emissions Update – Component Count and Amounts
135	HE	6	Forecasted Ecosystem Conditions in Gulf of Mexico OCS Habitats Using Coupled Modeling and Climate Scenarios
137	SE	7	Socioeconomic Impacts of OCS Infrastructure: Shifts in Recreational Behaviors
141	SE	8	National Register Evaluations of Deepwater Archaeological Sites in the Gulf of Mexico
143	SE	9	An Assessment of OCS-Related Onshore Transportation Industries and Operations in the Gulf of Mexico Region
147	HE	10	Gulf of Mexico Land Loss Change Assessment and Application to Louisiana Coastal Habitat Loss
149	HE	11	Deepwater Coral and Chemosynthetic Atlas and Modeling Program: Gulf of Mexico
151	PO	12	Evaluation of the Potential for Fresh Groundwater Reserves on the Gulf of Mexico OCS
Discipline Codes			
AQ = Air Quality FE = Fates & Effects HE = Habitat & Ecology IM = Information Management MM = Marine Mammals & Protected Species PO = Physical Oceanography SE = Social & Economic Sciences			



BOEM Information Need:

BOEM and BSEE required under Section 110 of the National Historic Preservation Act to identify and protect historic properties and avoid unnecessary damage to them.

BOEM requires understanding of type, range, age, state of preservation, significance, and extent of resources to inform NEPA decisions.

BOEM scientists seek to understand how random, but regular anthropogenic inputs onto the deep seafloor are rendered bioavailable and subsequently colonized by benthic fauna in order to conduct environmental assessments required by NEPA.



Date Information is Required:

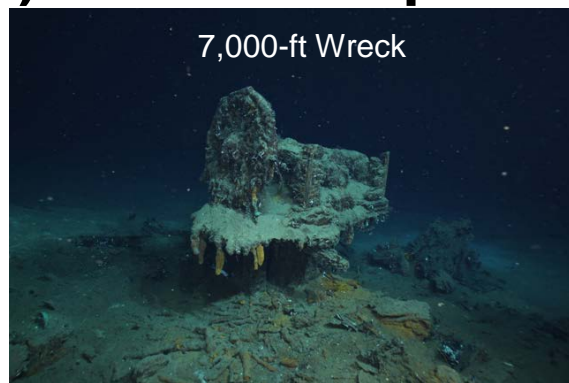
These historic shipwreck sites are considered to have *international significance* and their evaluation should be completed prior to industry activity occurring in the area to establish baseline conditions.

BOEM GOMR

Tentative Ranking: 4

Background:

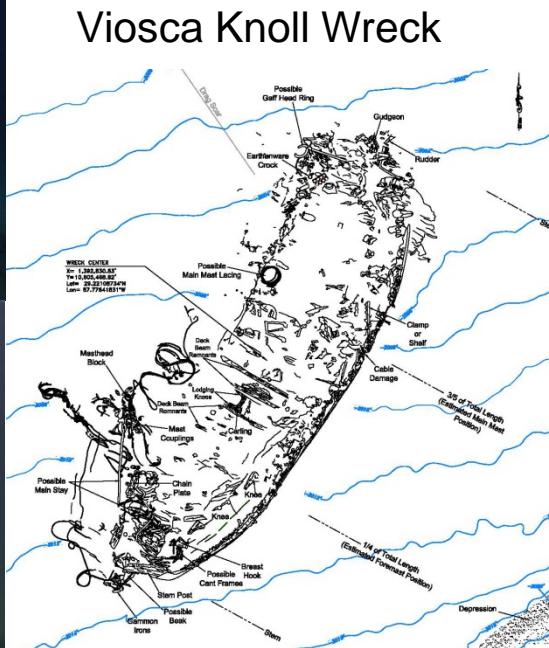
A) Relationship with Previous Work/Efforts



7,000-ft Wreck



Mica Wreck



Viosca Knoll Wreck



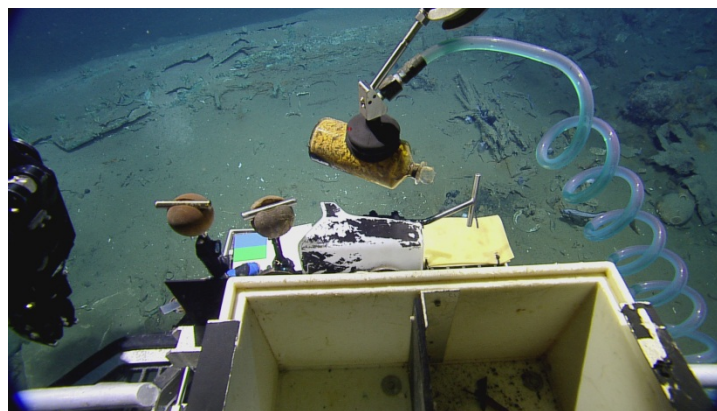
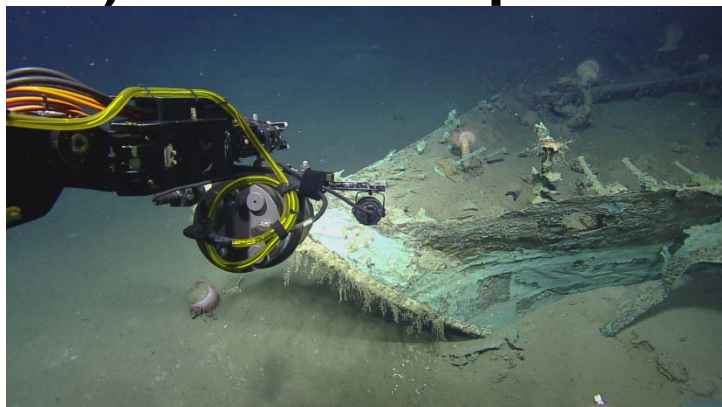
U-166



Mardi Gras Wreck

Background:

B) Relationship with Concurrent/Future Efforts



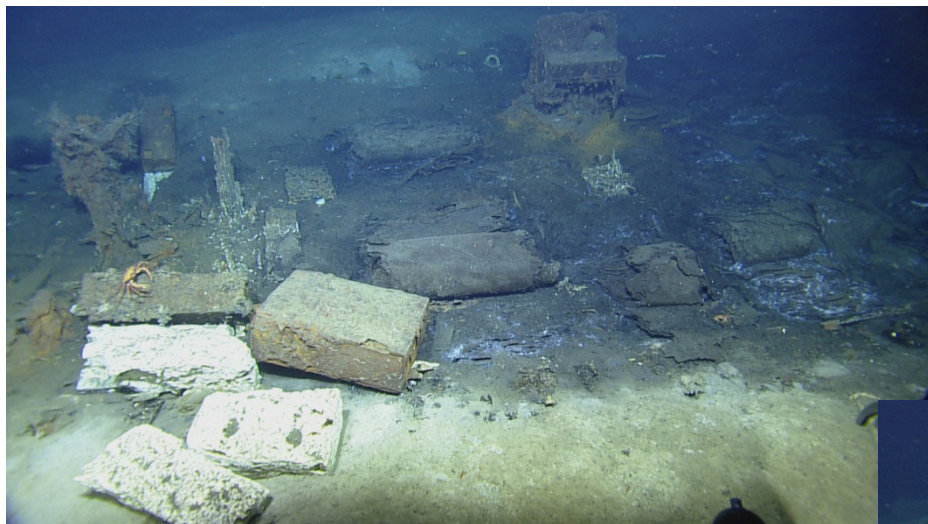
BOEM OCS Region



C003
41GOM01
22 July 2013

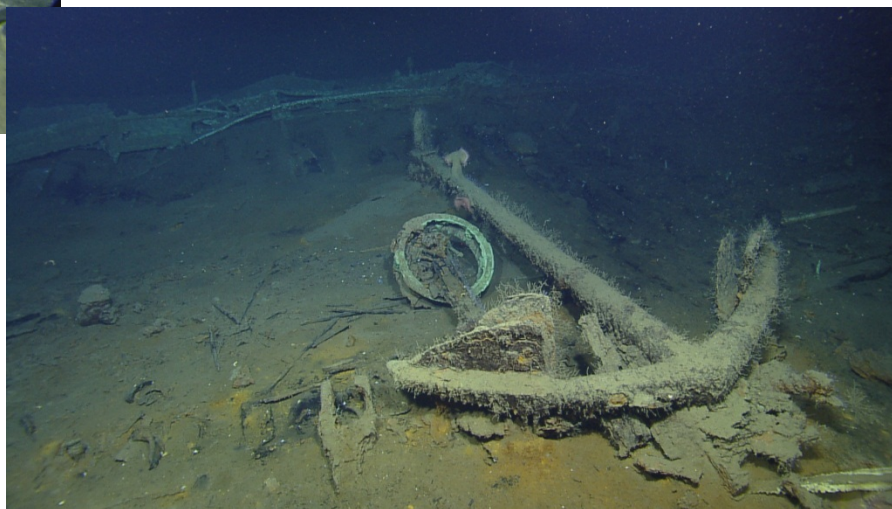
Tentative Ranking: 4

Study's Objectives:



Monterrey "B"

Monterrey "C"



Tentative Ranking: 4



BOEM OCS Region

Tentative Ranking: 4

Interdisciplinary Research at the Site of Three 19th Century Deepwater Shipwrecks



NATIONAL MARINE
SANCTUARIES



TEXAS HISTORICAL COMMISSION
real places telling real stories



GRADUATE SCHOOL OF
Oceanography



BOEM GOMR

Tentative Ranking: 4